



December 16, 2013

Sutro Tower, Inc.
1 La Avanzada Street
San Francisco, CA 94131-1124

Attention: Mr. Eric Dausman

Re: **Field Evaluation of Existing
977-Foot Self-Support Tower
San Francisco, California
TCI Project Number 13.082.001**

Dear Mr. Dausman,

We are pleased to submit our report on the field observation of the above referenced self-support tower.

Authorization / Purpose:

Tower Consultants Incorporated was retained by Sutro Tower Company to conduct a field observation of the 977-foot self-support tower.

The purpose of the field observation was to visually evaluate the condition and structural integrity of the tower. A routine inspection was performed of leg B, the east face trusses, the strands and the leg B base and stack B above the 6th level.

The tower is located in San Francisco, California. J. Altmyer, P.E. & Y. Kabatski performed the site observations between the dates of September 27th through November 12th, 2013.

Field Observations:

The inspection consisted of a tower climb and visual examination of the tower members, connections, antennas, feed lines and mounting hardware. Only those members that could be seen with binoculars and the naked eye were inspected. There are some areas on the faces and legs that were covered by skin and could not be inspected.

The structural elements of the tower appear to be in fair condition, with only a few bent members, loose bolts, short bolts or other deficiencies. There are areas of the tower where rust has formed on the tower member surfaces. In the open areas of the tower faces on levels 5 and 6 there are just a few small areas of minor corrosion on the tower members. At level 2, rust was found where the skin was attached to the main beams leading to varying degrees of

Tower Consultants, Inc.

material loss. A few gusset plates showed serious degradation due to corrosion in leg B between levels 1 and 2. There are many corroded fasteners throughout the tower height and some are corroded to the point where steel layers have flaked off leading to rounding of the nut which is a condition that requires bolt replacement. The tower skin showed no distress.

The strands are in fair condition; however, the strand wires between levels 1 and 2 and levels 3 and 4 had bulging strands. Between levels 4 and 5 there is a strand end connection that has shown movement in the end connection socket. There is a gap in the socket that has to be filled with sealant in order to prevent water retention which will lead to corrosion. Minor rust was seen on strands between levels 5 and 6. The strand wires appeared to be tensioned properly. Minor rust was seen on the strand connection hardware. The wires for the antenna B stack were vibrating. The vibrations created gaps in the sealant at the end connections that need to be resealed to prevent water accumulation.

The base of leg B is in satisfactory condition; however, minor rust was observed on the leg, leg gussets, base plates and base plate welds. The exposed surfaces of the concrete foundation at the tower base are in good condition. The tower base is properly grounded.

The climbing facilities and platforms were secure and appear to be in good condition with some minor exceptions. The following items were noted:

- Some climb ladder connection bolts are rusted.
- The safety cable connection inside leg B had rusted hardware.
- There is an improper top safety climb connection inside leg B at level 6.
- The grating support at level 6 has short bolts and bolts that are missing nuts.

The tower lighting system appears to be in good condition with some minor exceptions. All of the lighting levels are operational and synchronized. The following items were noted:

- The lighting conduits and conduit hardware are typically rusted throughout the tower height.
- There is a cut and abandoned conduit on the tower.
- Two conduit connectors are broken.
- One of the junction boxes is open.
- There is a broken connector for one of the beacon flex lines.

The antennas, transmission lines and associated mounting hardware appear to be in fair condition. The following items were noted:

- Some rigid lines had broken spring hangers.
- Many rigid lines have rusted spring hangers.
- There are cut and abandoned lines in some locations.
- Some line support rails are rusted.

Tower Consultants, Inc.

- There are many loose feed lines that are poorly connected to the tower.
- A frame connection between levels 5 and 6 is missing bolts and nuts.

For detailed information see the attached inspection data sheets and photo logs.

Should you have any questions or wish to discuss any aspect of this report, please do not hesitate to contact the undersigned.

Sincerely,



Digitally signed by Jeff Altmeyer
DN: cn=Jeff Altmeyer, email=jaltmyer@tower-
tci.com, o=Tower Consultants Inc.,
ou=Lynnwood Office, c=US
Date: 2013.12.18 15:05:02 -08'00'

Jeff Altmeyer, P.E.
Tower Engineer
Tower Consultants Incorporated

Inspection Summary- Year 2013

Description of Inspection:

- Routine inspection of Log B
- Routine inspection of horizontal wires on East face
- Routine inspection of strands on East face
- Routine inspection of strand anchors on Log B
- Routine inspection of the Log Straps

Special or In-Depth Inspections: None

Summary of Results:

Flushed leadwires, two bent Members and a few loose or short bolts. Rusted members and a few severely rusted joints. Strand wires with bulging anchors. Minor rust on some strands. Flushed strand labels and safety cable hardware, control and control hardware. Loose fasteners in many locations.

Summary of Recommendations: See report text

Checked:

1. Has a severe event occurred since the previous inspection? Yes No
2. Have action items and recommendations from previous inspections been addressed in the scope of work? Yes No
3. Has the inspected log for future years been subject to account for degree of work and findings of the inspection? Yes No

Signature: Jeff M. Sykes

Date: 10/01/13

Inspection Data Sheet: Antenna Mount Stack "B" (Level 1 to base of antenna)

Open No.	Component			Flag No.	Observed Damage		
	Layer	Location	Mat				
1	LP-400	4-A	D	1	LP-400 Fracture, surface seal		
2	LP-400	4-J	H	2	LP-400 Fracture at stress seal		
3	LP-400	4-H	D	3	LP-400 Fracture at stress seal		
4	LP-400	4-B	D	4	LP-400 Fracture at stress seal		
5	LP-400	4-K	D	5	LP-400 Fracture at stress seal		
6	LP-400	4-G	D	6	LP-400 Fracture		
7	LP-400	4-L	D	7	LP-400 Fracture		
8	LP-400	4-N	D	8	LP-400 Fracture at stress seal		
9	LP-400	4-M	D	9	LP-400 Fracture at stress seal		
10	LP-400	4-O	D	10	LP-400 Fracture at stress seal		
11	LP-400	4-P	D	11	LP-400 Fracture at stress seal		
State of California San Francisco, CA				Name: _____ Title: _____	Date: _____ Time: _____		

* See paragraph 1.1.2 of the Antenna Mount Stack "B" (Level 1 to base of antenna)



Photo 01.JPG
9/26/2013



Photo 02.JPG
9/26/2013



Photo 03.JPG
9/26/2013

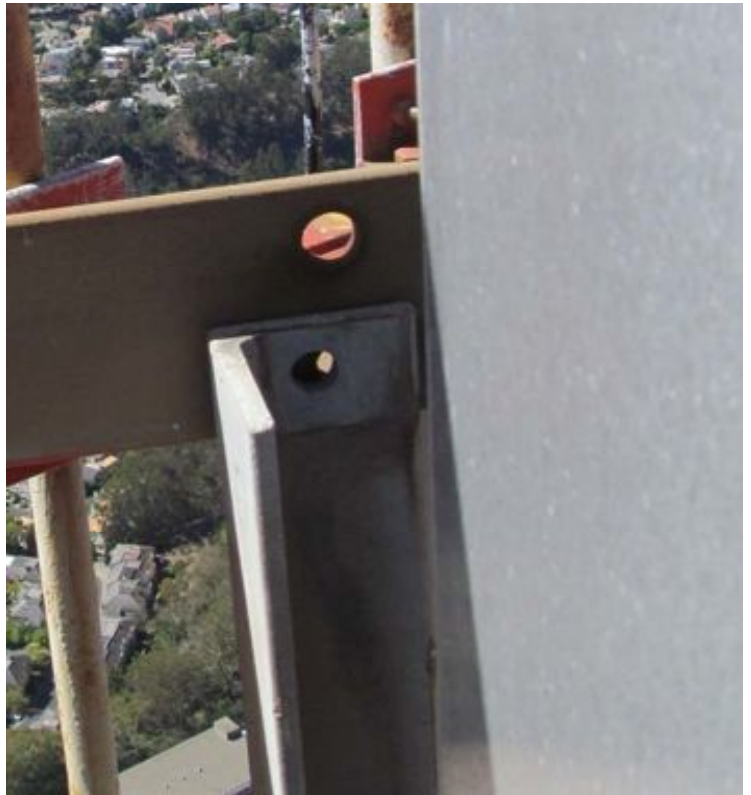


Photo 04.JPG
9/26/2013

Antenna Mount Stack "B" (Level 6 to base of antenna)



Photo 05.JPG
9/26/2013

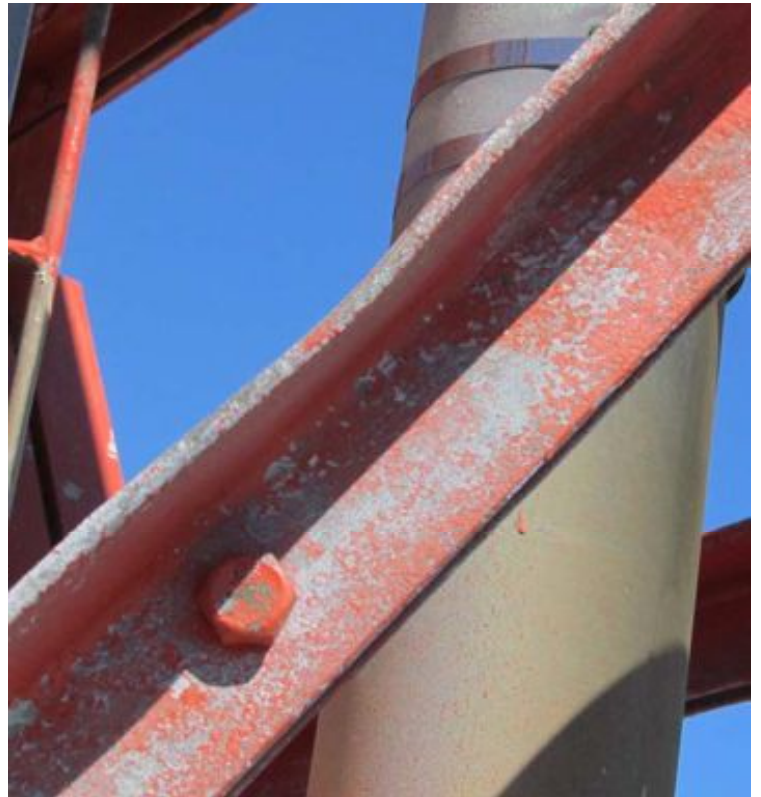


Photo 06.JPG
9/26/2013



Photo 07.JPG
9/26/2013



Photo 08.JPG
9/26/2013

Antenna Mount Stack "B" (Level 6 to base of antenna)



Photo 09.JPG
9/26/2013



Photo 10.JPG
9/26/2013



Photo 11.JPG
9/26/2013

Antenna Mount Stack "B" (Level 6 to base of antenna)



Photo 1.JPG
9/27/2013



Photo 2.JPG
9/27/2013



Photo 3.JPG
9/27/2013



Photo 4.JPG
9/27/2013



Photo 5.JPG
9/27/2013



Photo 6.JPG
9/27/2013



Photo 7.JPG
9/27/2013



Photo 8.JPG
9/27/2013



Photo 9.JPG
9/27/2013



Photo 10.JPG
9/27/2013



Photo 11.JPG
9/27/2013



Photo 12.JPG
9/27/2013



Photo 1.JPG
10/17/2013

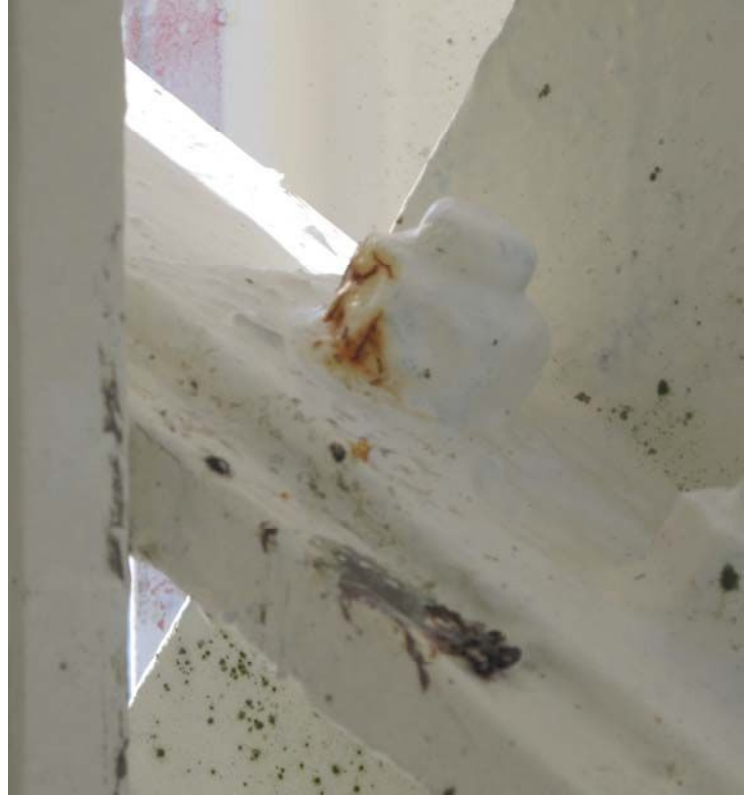


Photo 2.JPG
10/17/2013



Photo 3.JPG
10/17/2013



Photo 4.JPG
10/17/2013



Photo 5.JPG
10/17/2013



Photo 6.JPG
10/17/2013



Photo 7.JPG
10/17/2013



Photo 8.JPG
10/17/2013



Photo 9.JPG
10/17/2013



Photo 01.JPG
10/17/2013



Photo 02.JPG
10/17/2013



Photo 03.JPG
10/17/2013



Photo 04.JPG
10/17/2013



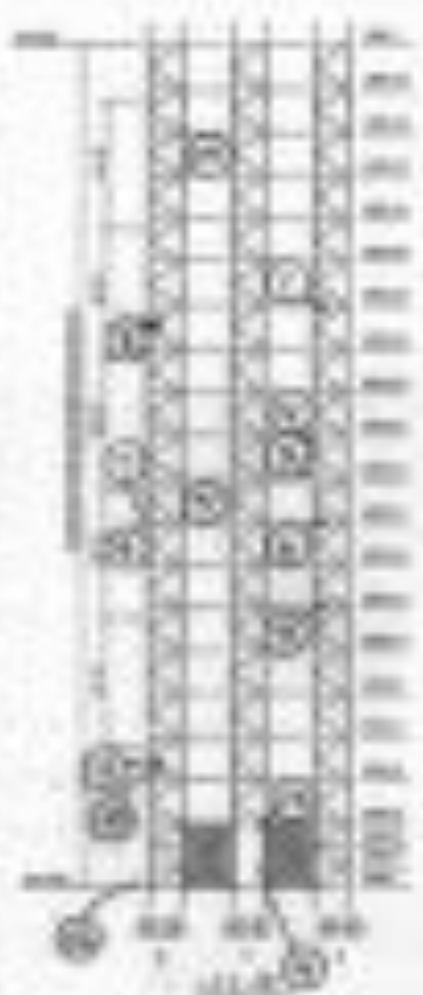
Photo 05.JPG
10/17/2013



Photo 06.JPG
10/17/2013

Inspection Data Sheet: Leg B (Level 2 to Level 3)

Step #	Layer Identifier			Step #	Description					
	Color	Texture	SP							
1	B-Face	3.47	C	1	RF10					
2	B-Face	2.24	C	2	RF10					
3	B-Face	2.19	B	3	NOT ACP 284-10-100 Concrete					
4	B-Face	2.19	D	4	Two separate concrete layers					
5	BS	2.19	C	5	150mm Splice Rebar and Splice Rebar					
6	B-Face	2.17	C	6	RF10					
7	BS	2.17	D	7	Vertical Rebar in Slab					
8	BS	2.17	C	8	(1) 150mm Splice Rebar and Splice					
9	B-Face	4.19	C	9	RF10					
10	B-Face	2.17	C	10	RF10					
11	BS	2.17	C	11	NOT ACP 284-10-100					
12	CONCRETE	2	D	12	(1) NOT ACP 284-10-100					
13	B-Face	2.19	C	13	(2) NOT ACP 284-10-100					
14	B-Face	2.19	C	14	(3) NOT ACP 284-10-100					
15	CONCRETE	2.17	D	15	(4) NOT ACP 284-10-100					
<table border="1" style="width: 100%; border-collapse: collapse;"> <tr> <td style="width: 30%;">Date Time</td> <td style="width: 30%;">Signed</td> <td style="width: 40%;">No. 1-1-1</td> </tr> <tr> <td>Date Plotted On</td> <td>By</td> <td>10/10/15</td> </tr> </table>					Date Time	Signed	No. 1-1-1	Date Plotted On	By	10/10/15
Date Time	Signed	No. 1-1-1								
Date Plotted On	By	10/10/15								



See separate computer program: Digital Archiving Software, v.1.0



Photo 1.JPG
10/17/2013



Photo 2.JPG
10/17/2013



Photo 3.JPG
10/17/2013



Photo 4.JPG
10/17/2013



Photo 5.JPG
10/17/2013

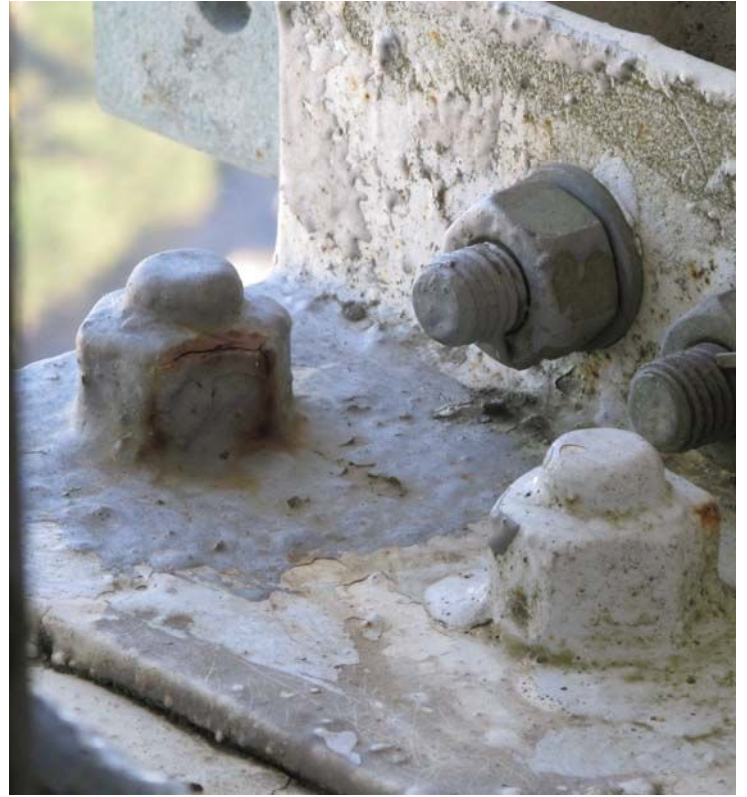


Photo 6.JPG
10/17/2013



Photo 7.JPG
10/17/2013



Photo 8.JPG
10/17/2013



Photo 9.JPG
10/17/2013



Photo 10.JPG
10/17/2013



Photo 11.JPG
10/17/2013

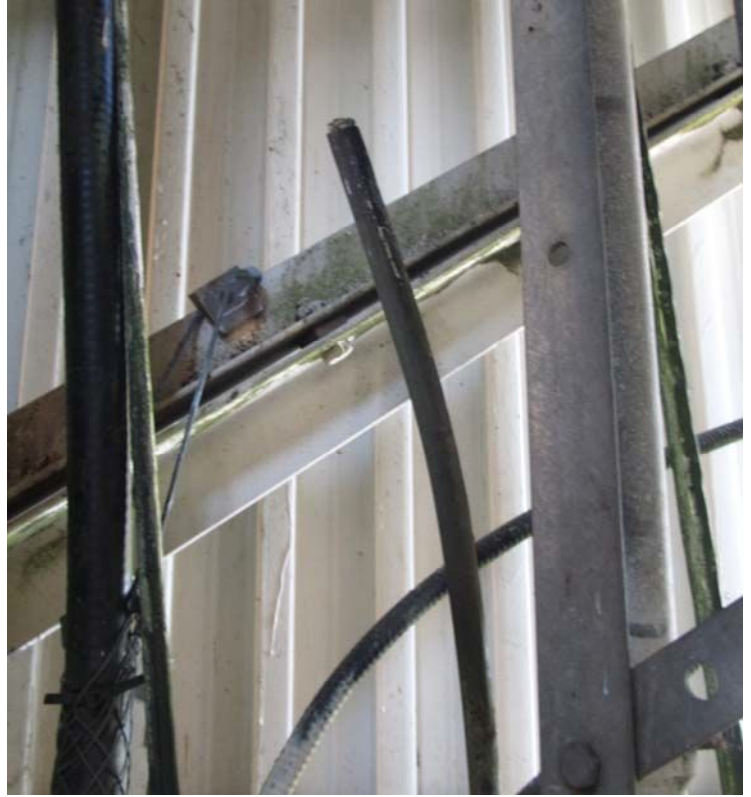


Photo 12.JPG
10/17/2013



Photo 13.JPG
10/18/2013



Photo 14.JPG
10/18/2013

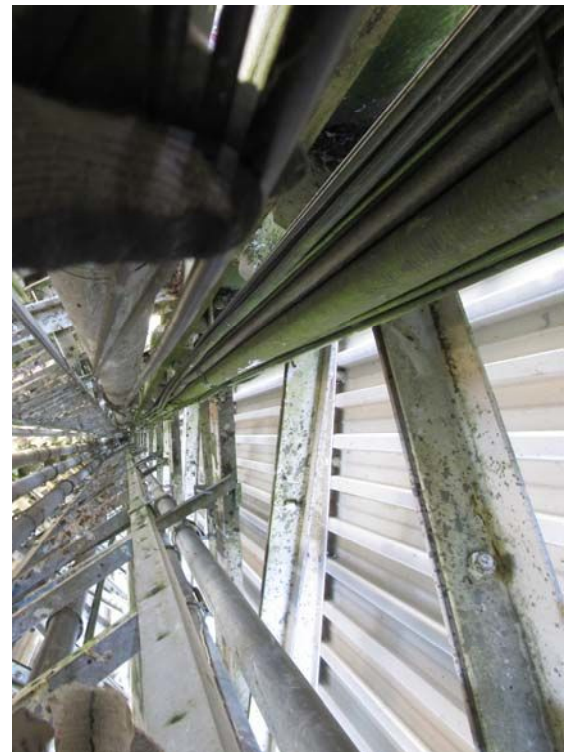
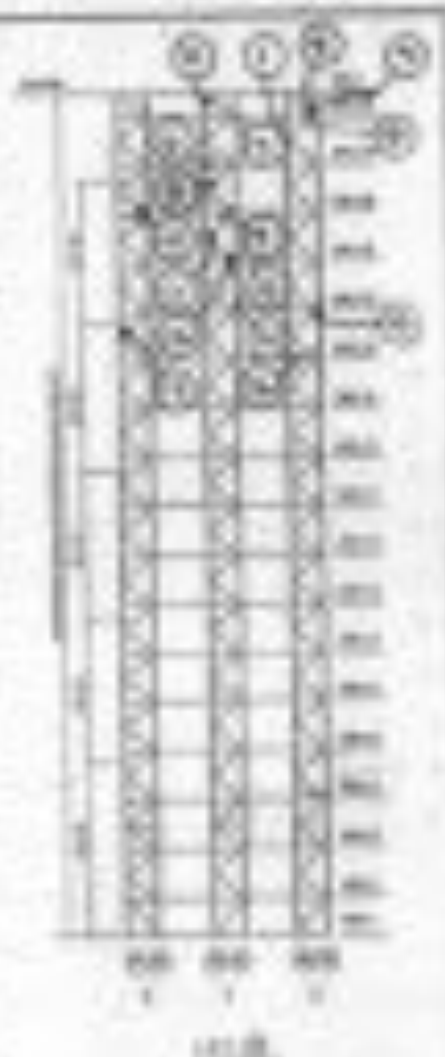


Photo 15.JPG
10/18/2013

Inspection Data Sheet: Leg B (Level 1 to Level 2)

Step No.	Level coordinates			Step No.	Observations
	Level	Station	Ref		
1	1st level	1-4	D	1	10 1/2" DIA. 11 LEGS
2	1st level	4	C	2	Support PLATE is NOTED
3	2nd level	1-2	D	3	upper LEGS have PROBLE same as LEGS
4	3rd level	1-4B	C	4	RF (1)
4	3rd level	1-4B	C	5	SUPPORT SUPPORT (horizontal)
6	1st level	1-5B	C	6	RF (1)
7	1st level	1-5B	D	7	(1) not fully supported by work
8	2nd level	1-5B	D	8	RF (1)
9	1st level	1-5B	D	9	RF (1)
10	2nd level	1-5B	D	10	RF (1)
11	2nd level	1-5B	C	11	RF (1)
12	1st level	1-5B	D	12	RF (1)
13	2nd level	1-5B	C	13	RF (1)
14	2nd level	1-5B	D	14	RF (1)
15	2nd level	1-5B	C	15	RF (1)
16	2nd level	1-5B	D	16	RF (1)
17	2nd level	1-5B	C	17	RF (1)
Sub Total				Total	
San Francisco CA				Date: 1-4-20	
No.				Date: 10/18/19	



San Francisco Building Department, Department of Building Inspection, 1000



Photo 01.JPG
10/18/2013



Photo 02.JPG
10/18/2013



Photo 03.JPG
10/18/2013



Photo 04.JPG
10/18/2013



Photo 05.JPG
10/18/2013



Photo 06.JPG
10/18/2013

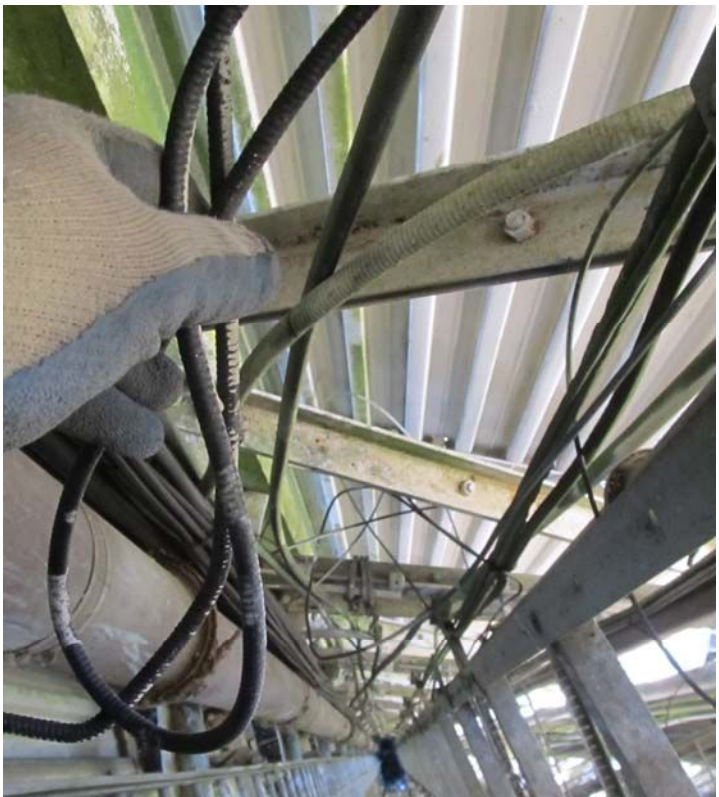


Photo 07.JPG
10/18/2013

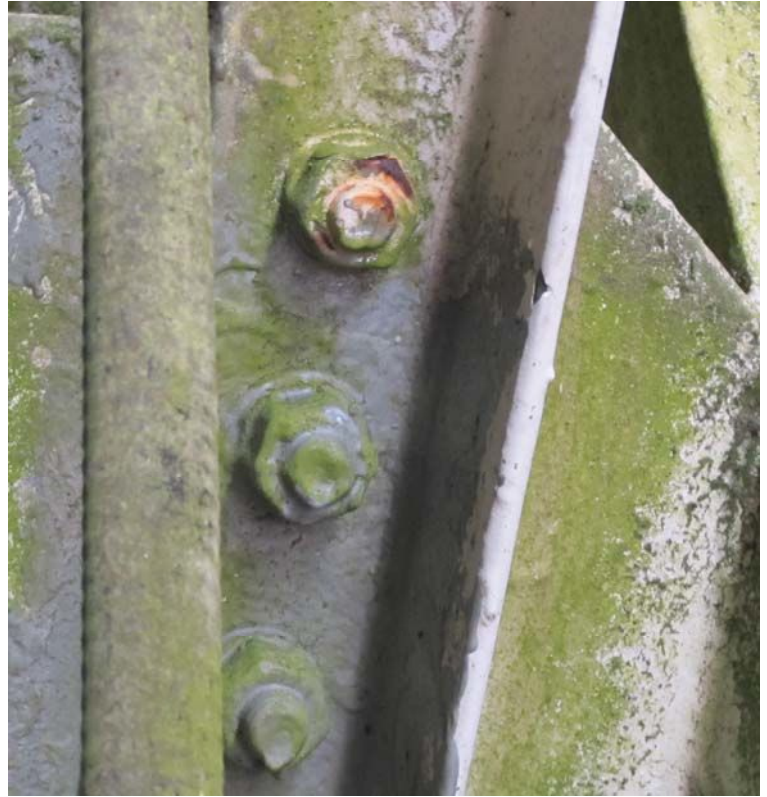


Photo 08.JPG
10/18/2013



Photo 09.JPG
10/18/2013



Photo 10.JPG
10/18/2013



Photo 11.JPG
10/18/2013

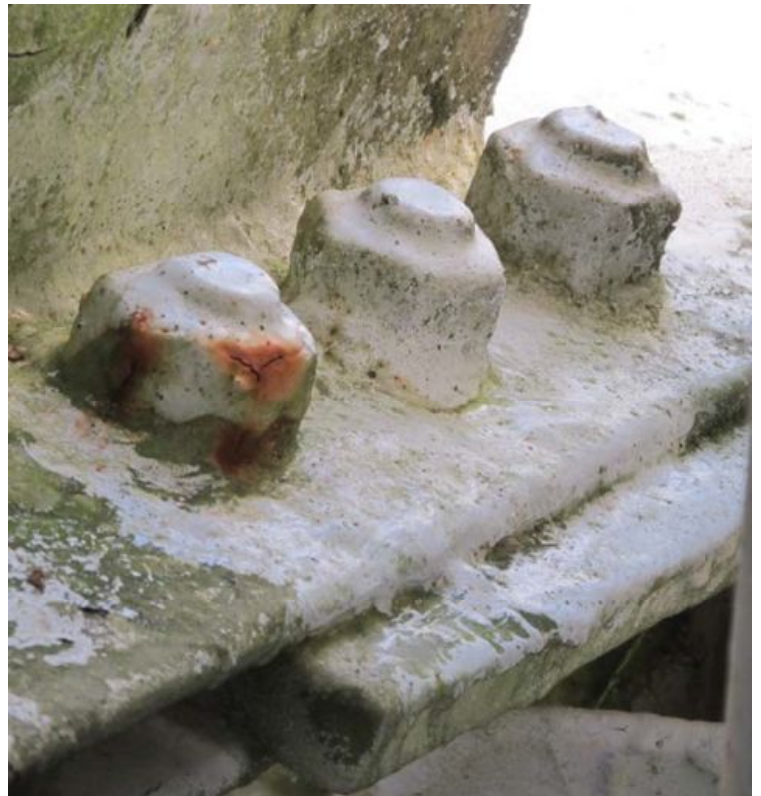


Photo 12.JPG
10/18/2013



Photo 13.JPG
10/18/2013



Photo 14.JPG
10/18/2013



Photo 15.JPG
10/18/2013



Photo 16.JPG
10/18/2013



Photo 17.JPG
10/18/2013

Inspection Data Sheet: Log B (Level 1 to Level 2)

Depth ft	Level number			Flow ft	Description
	Open	Water	Sec		
4	1-1000	1.10	C	16	RP(1)
5	1-1000	1.10	E	16	RP(1), RWT, and RWT(1)
10	1-1000	1.10	E	16	RP(1)
11	1-1000	1-2	D	17	ALL RWT(1) FROM THE TOP OF RWT(1)
14	1-1000	1.11	C	19	RP(1)
15	1-1000	1.1	C	19	RWT (1) RWT(1)
14	1-1000	1.14	C	19	RP(1)
14	1-1000	1.15	E	19	RP(1)
14	1-1000	1.14	C	19	RP(1)
17	1-1000	1.15	C	21	RP(1)
16	1-1000	1.14	E	19	RP(1)
17	1-1000	1.12	C	21	RWT (1) RWT(1)
19	1-1000	1.11	C	19	RWT (1) RWT(1)
17	1-1000	1.14	C	19	RWT (1) RWT(1)
18	1-1000	1.13	C	19	RP(1)
17	1-1000	1.14	C	19	1" RWT (1) RWT (1) RWT(1)
14	1-1000	1.14	E	19	Blurred photo shows RWT(1) RWT(1) RWT(1)
Bore Total				None	
San Inspection, Cal				No	

10 ft

*San Inspection Log must be completed in accordance with the San Inspection Manual



Photo 18.JPG
10/18/2013

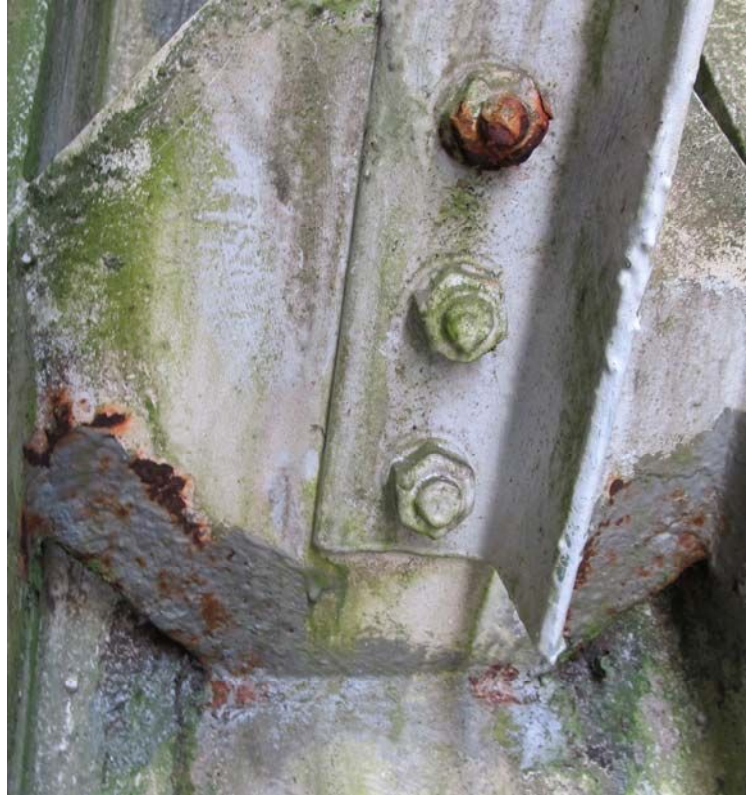


Photo 19.JPG
10/18/2013



Photo 20.JPG
10/18/2013



Photo 21.JPG
10/18/2013



Photo 22.JPG
10/18/2013



Photo 23.JPG
10/18/2013



Photo 24.JPG
10/18/2013

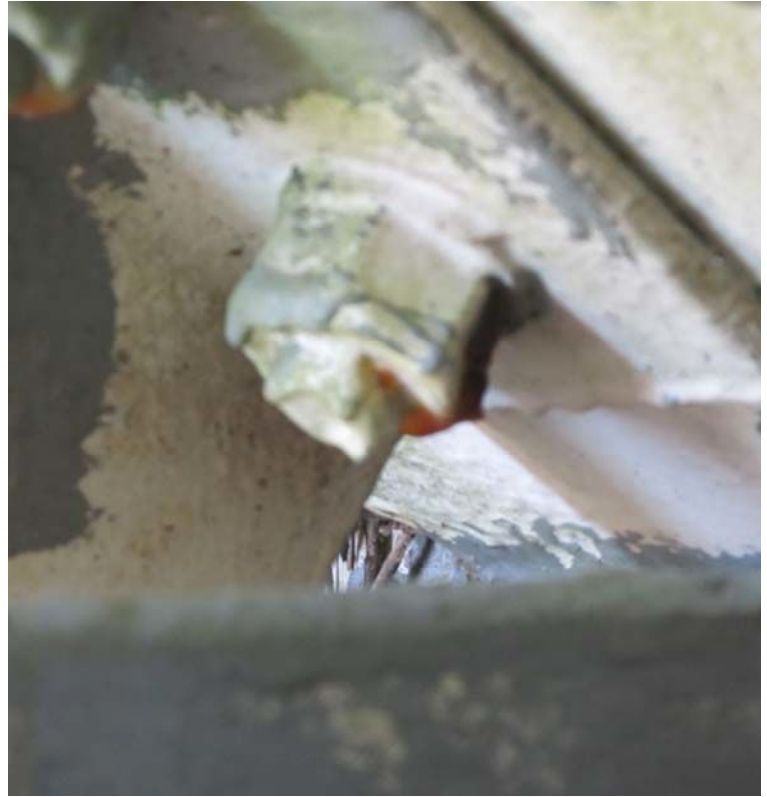


Photo 25.JPG
10/18/2013



Photo 26.JPG
10/18/2013



Photo 27.JPG
10/18/2013



Photo 28.JPG
10/18/2013

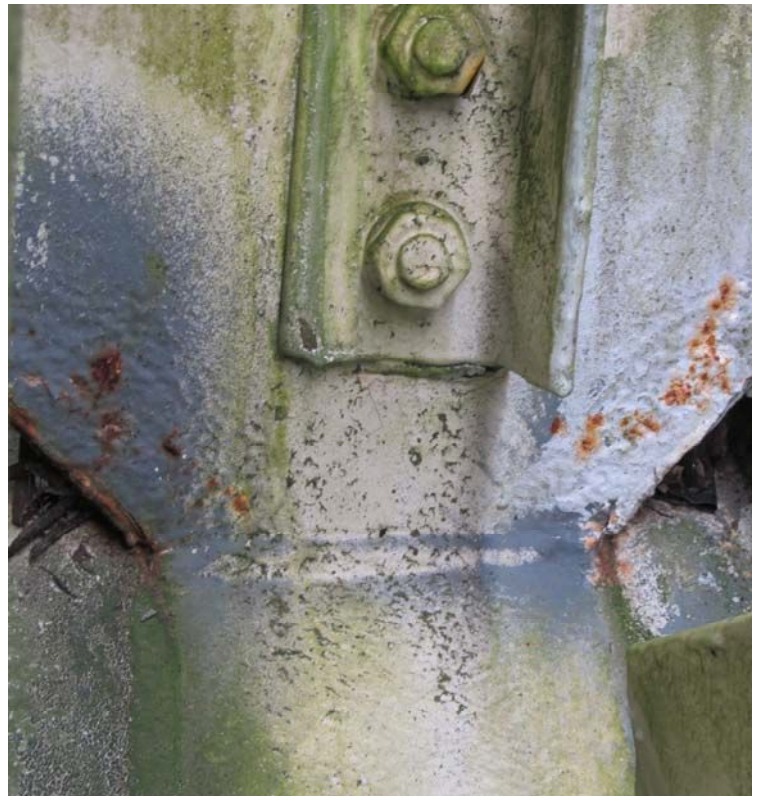


Photo 29.JPG
10/18/2013



Photo 30.JPG
10/18/2013

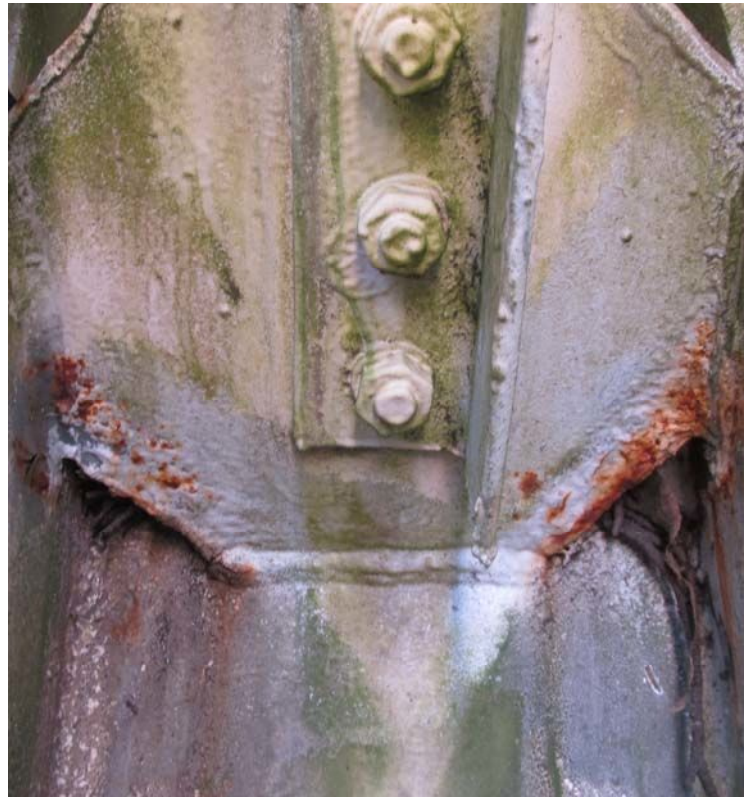


Photo 31.JPG
10/18/2013



Photo 32.JPG
10/18/2013



Photo 33.JPG
10/18/2013



Photo 34.JPG
10/18/2013



Photo 35.JPG
10/18/2013

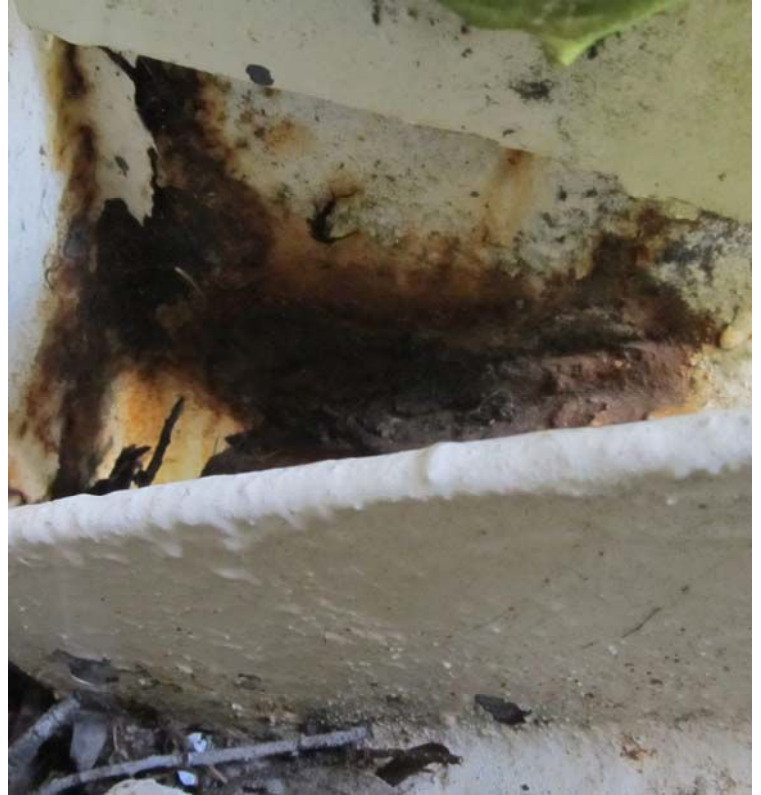


Photo 36.JPG
10/18/2013



Photo 37.JPG
10/18/2013



Photo 38.JPG
10/18/2013



Photo 39.JPG
10/18/2013



Photo 40.JPG
10/18/2013



Photo 41.JPG
10/18/2013

Inspection Data Sheet: East Truss (Level 6)

Panel No.	Location/Description			Panel No.	Inspection Notes
	Panel	Area (sq ft)	Material		
1	OU	6.27	C	1	RP (0)
2	UL	6.36	C	2	RP (1)
3	OL	6.36	C	3	RP (2)
4	DL	6.36	C	4	RP (1)
5	OU	6.45	C	5	RP (2)
6	DU	6.79	C	6	RP (2)
7	OU	6.38	C	7	RP (2)
8	OL	6.38	C	8	RP (2) - CORRAL (1/2) - IN CORRAL TO SHIRT
9	DL	6.48	C	9	RP (2)
10	DU	6.82	C	10	RP (2)
11	DU	6.79	C	11	RP (1)
12	LU	6.71	C	12	RP (2)
13	LU	6.45	C	13	RP (1)
14	LU	6.45	C	14	RP (2) - CORRAL (1/2) - AT THE SHIRT
15	LU	6.48	C	15	RP (1)
Sub Total				Area: <u> </u> sq. ft.	
Sub Total, CR				No. <u> </u> of CR	

*Location abbreviations: OU = outer upper, OL = outer lower, DU = diagonal upper and DL = diagonal lower
 *Panel abbreviations: U = vertical, L = vertical, D = diagonal, C = connection of columns

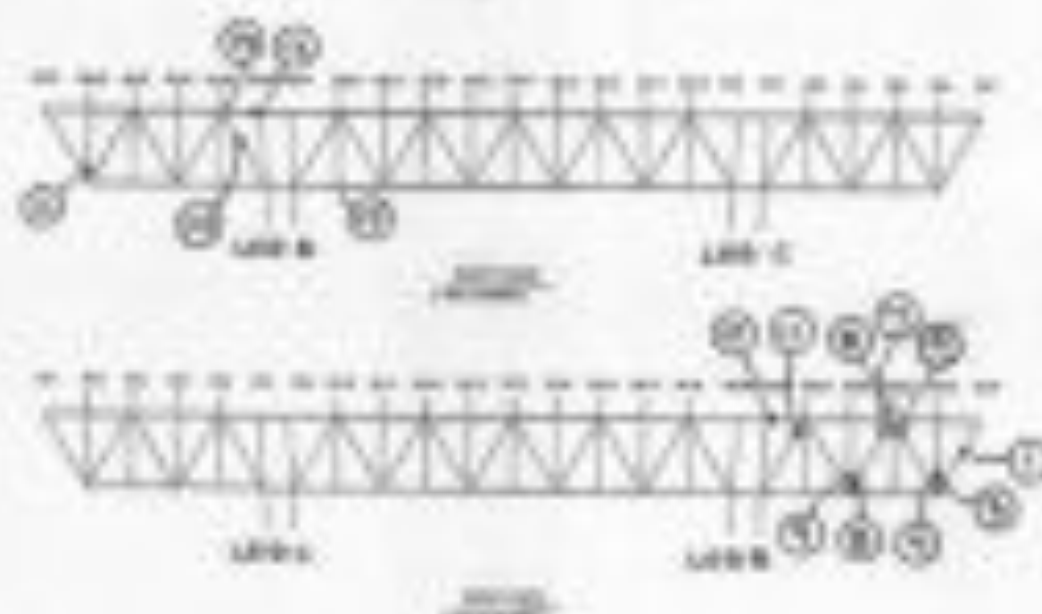




Photo 01.JPG
9/27/2013



Photo 02.JPG
9/27/2013



Photo 03.JPG
9/27/2013



Photo 04.JPG
9/27/2013



Photo 05.JPG
9/27/2013



Photo 06.JPG
9/27/2013



Photo 07.JPG
9/27/2013



Photo 08.JPG
9/27/2013



Photo 09.JPG
9/27/2013



Photo 10.JPG
9/27/2013



Photo 11.JPG
9/27/2013



Photo 12.JPG
9/27/2013



Photo 13.JPG
9/26/2013

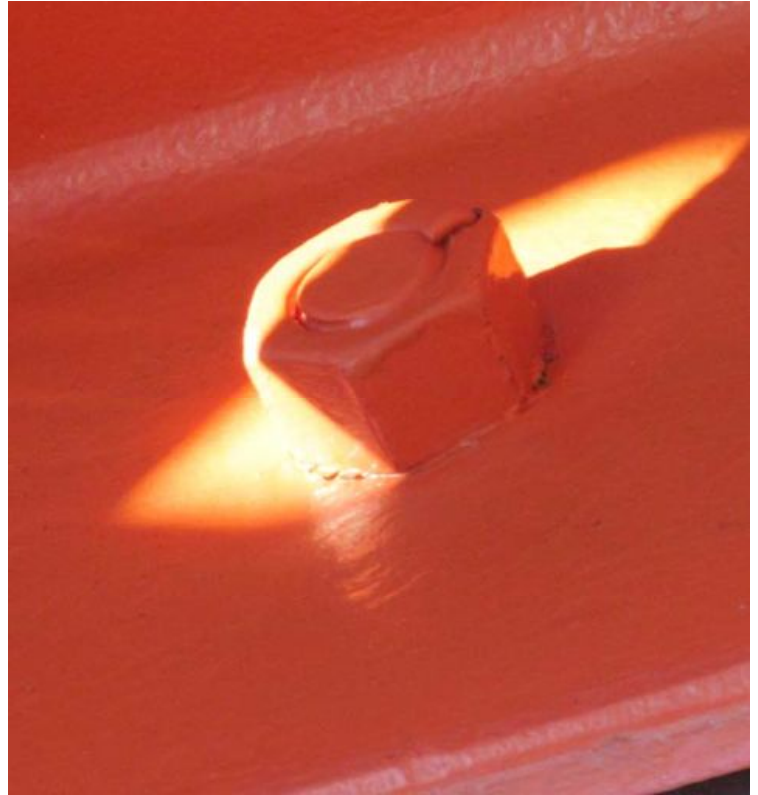


Photo 14.JPG
9/27/2013



Photo 15.JPG
9/27/2013

Inspection Data Sheet: East Truss (Level 6)

Bay #	Location Coordinates			Bay #	Inspection Location
	East	North	West		
16	OU	4-18	C	16	RF (C)
17	OU	4-19	C	17	RF (C)
18	OU	4-21	C	18	RF (C)
19	OU	4-21	C	19	RF (C)
20	OU	4-20	C	20	RF (C)
21	OU	4-11	C	21	RF (C)
22	OU	4-14	C	22	RF (C) (4-14) (4-14)
23	OU	4-14	C	23	RF (C) (4-14) (4-14)
24	OU	4-9	C	24	RF (C) (4-9) (4-9)
25	OU	4-9	C	25	RF (C)
26	OU	4-9	C	26	RF (C)
27	OU	4-9	C	27	RF (C)
28	OU	4-9	C	28	RF (C)
29	OU	4-9	C	29	RF (C)
30	OU	4-9	C	30	RF (C)
31	OU	4-9	C	31	RF (C)
32	OU	4-9	C	32	RF (C)
33	OU	4-9	C	33	RF (C)
34	OU	4-9	C	34	RF (C)
35	OU	4-9	C	35	RF (C)
36	OU	4-9	C	36	RF (C)
37	OU	4-9	C	37	RF (C)
38	OU	4-9	C	38	RF (C)
39	OU	4-9	C	39	RF (C)
40	OU	4-9	C	40	RF (C)
41	OU	4-9	C	41	RF (C)
42	OU	4-9	C	42	RF (C)
43	OU	4-9	C	43	RF (C)
44	OU	4-9	C	44	RF (C)
45	OU	4-9	C	45	RF (C)
46	OU	4-9	C	46	RF (C)
47	OU	4-9	C	47	RF (C)
48	OU	4-9	C	48	RF (C)
49	OU	4-9	C	49	RF (C)
50	OU	4-9	C	50	RF (C)
51	OU	4-9	C	51	RF (C)
52	OU	4-9	C	52	RF (C)
53	OU	4-9	C	53	RF (C)
54	OU	4-9	C	54	RF (C)
55	OU	4-9	C	55	RF (C)
56	OU	4-9	C	56	RF (C)
57	OU	4-9	C	57	RF (C)
58	OU	4-9	C	58	RF (C)
59	OU	4-9	C	59	RF (C)
60	OU	4-9	C	60	RF (C)
61	OU	4-9	C	61	RF (C)
62	OU	4-9	C	62	RF (C)
63	OU	4-9	C	63	RF (C)
64	OU	4-9	C	64	RF (C)
65	OU	4-9	C	65	RF (C)
66	OU	4-9	C	66	RF (C)
67	OU	4-9	C	67	RF (C)
68	OU	4-9	C	68	RF (C)
69	OU	4-9	C	69	RF (C)
70	OU	4-9	C	70	RF (C)
71	OU	4-9	C	71	RF (C)
72	OU	4-9	C	72	RF (C)
73	OU	4-9	C	73	RF (C)
74	OU	4-9	C	74	RF (C)
75	OU	4-9	C	75	RF (C)
76	OU	4-9	C	76	RF (C)
77	OU	4-9	C	77	RF (C)
78	OU	4-9	C	78	RF (C)
79	OU	4-9	C	79	RF (C)
80	OU	4-9	C	80	RF (C)
81	OU	4-9	C	81	RF (C)
82	OU	4-9	C	82	RF (C)
83	OU	4-9	C	83	RF (C)
84	OU	4-9	C	84	RF (C)
85	OU	4-9	C	85	RF (C)
86	OU	4-9	C	86	RF (C)
87	OU	4-9	C	87	RF (C)
88	OU	4-9	C	88	RF (C)
89	OU	4-9	C	89	RF (C)
90	OU	4-9	C	90	RF (C)
91	OU	4-9	C	91	RF (C)
92	OU	4-9	C	92	RF (C)
93	OU	4-9	C	93	RF (C)
94	OU	4-9	C	94	RF (C)
95	OU	4-9	C	95	RF (C)
96	OU	4-9	C	96	RF (C)
97	OU	4-9	C	97	RF (C)
98	OU	4-9	C	98	RF (C)
99	OU	4-9	C	99	RF (C)
100	OU	4-9	C	100	RF (C)

1. Bay numbers beginning with 'O' are open, 'U' is used only for a roof open, and 'C' is closed.
 2. Bay numbers beginning with 'R' are roof, 'V' is used for a diagonal or a vertical, 'L' is used for a horizontal.

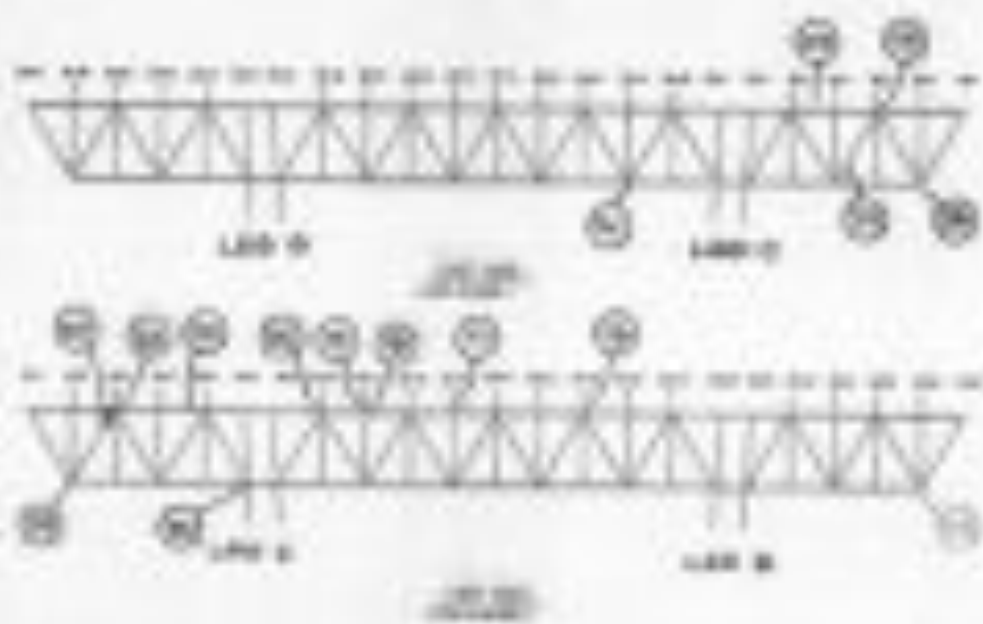




Photo 16.JPG
9/27/2013



Photo 17.JPG
9/27/2013



Photo 18.JPG
9/27/2013



Photo 19.JPG
9/27/2013



Photo 20.JPG
9/27/2013



Photo 21.JPG
9/27/2013



Photo 22.JPG
9/27/2013

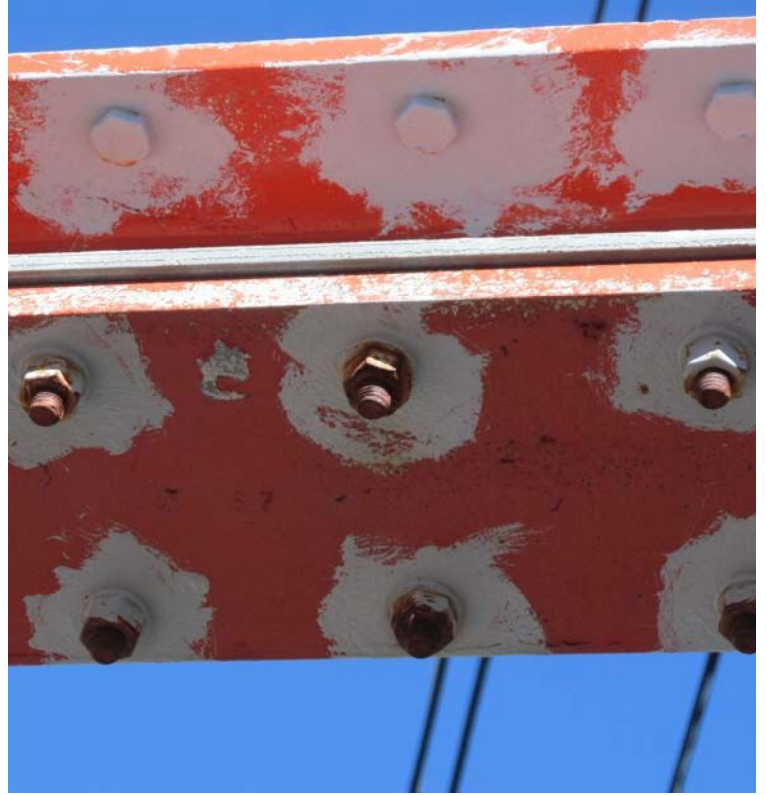


Photo 23.JPG
9/27/2013



Photo 24.JPG
9/27/2013



Photo 25.JPG
9/27/2013



Photo 26.JPG
9/27/2013



Photo 27.JPG
9/27/2013



Photo 28.JPG
9/26/2013



Photo 29.JPG
9/27/2013



Photo 30.JPG
9/27/2013



Photo 31.JPG
9/27/2013



Photo 32.JPG
9/27/2013



Photo 33.JPG
9/27/2013

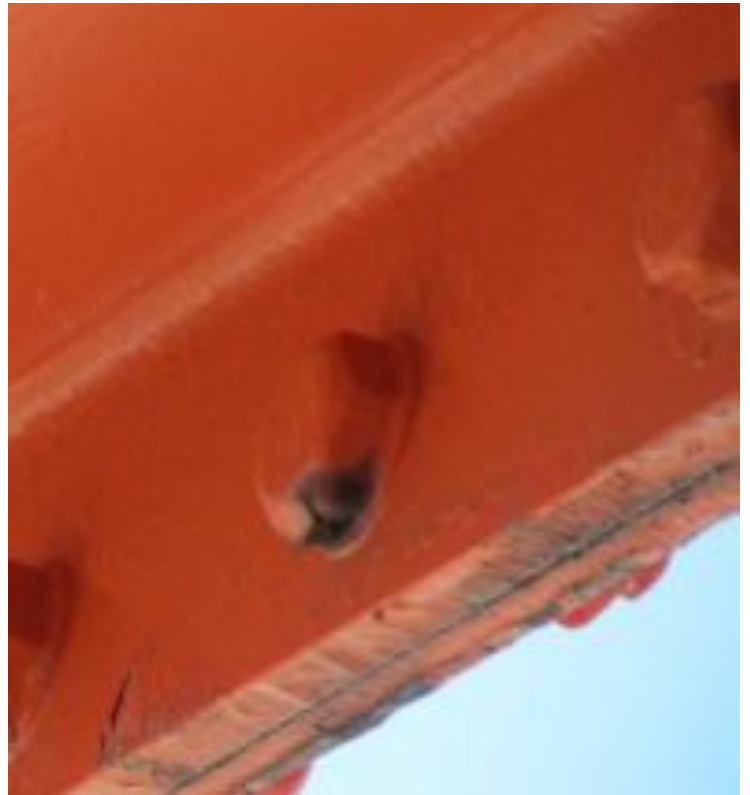


Photo 34.JPG
9/27/2013



Photo 35.JPG
9/27/2013



Photo 36.JPG
9/27/2013



Photo 37.JPG
9/27/2013



Photo 01.JPG
10/17/2013



Photo 02.JPG
10/17/2013



Photo 03.JPG
10/17/2013

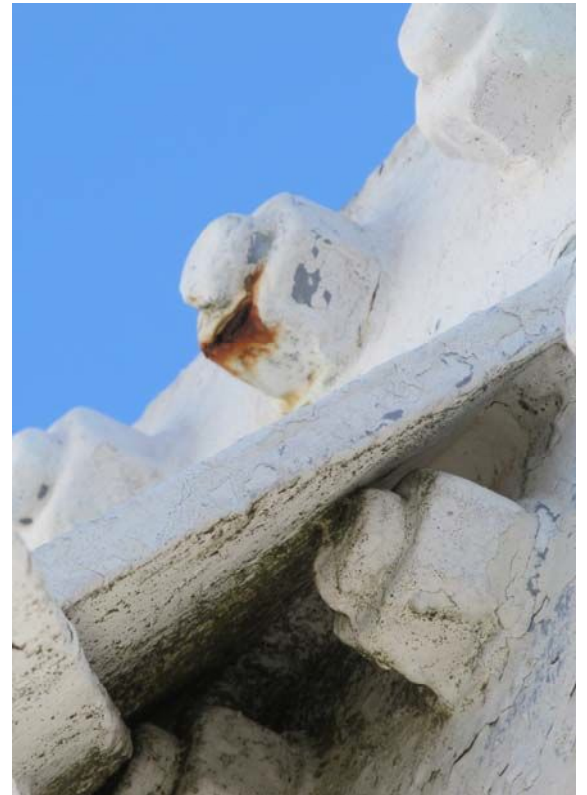


Photo 04.JPG
10/17/2013



Photo 05.JPG
10/17/2013

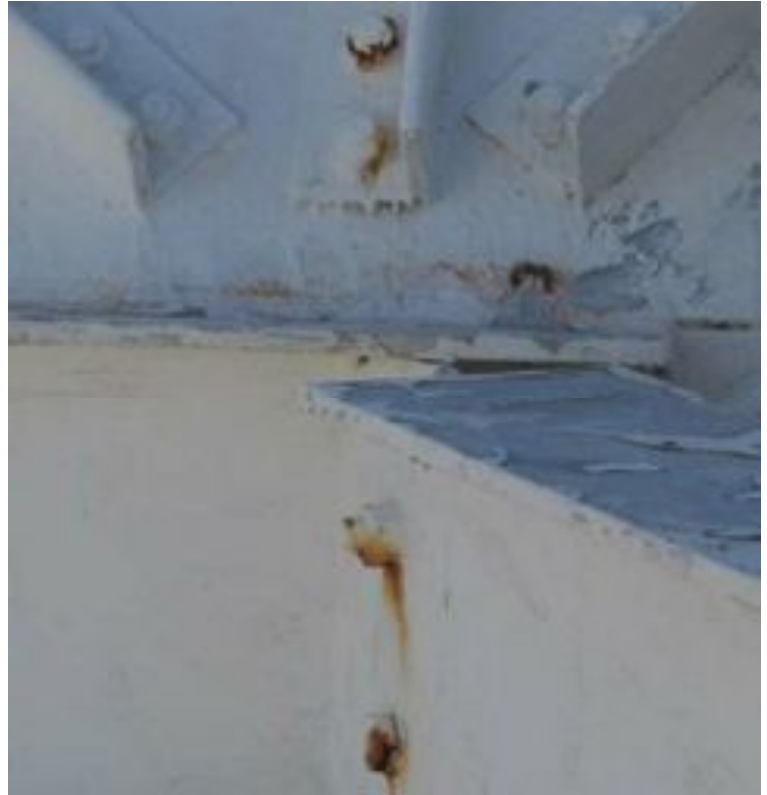


Photo 06.JPG
10/17/2013



Photo 07.JPG
10/17/2013



Photo 08.JPG
10/17/2013



Photo 09.JPG
10/17/2013



Photo 01.JPG
10/17/2013

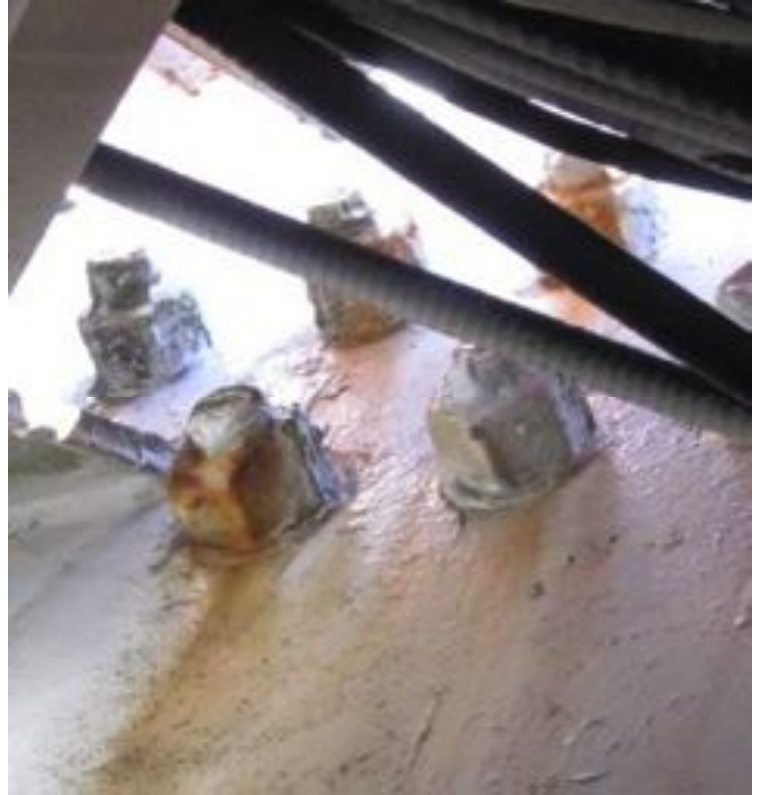


Photo 02.JPG
10/17/2013



Photo 03.JPG
10/17/2013

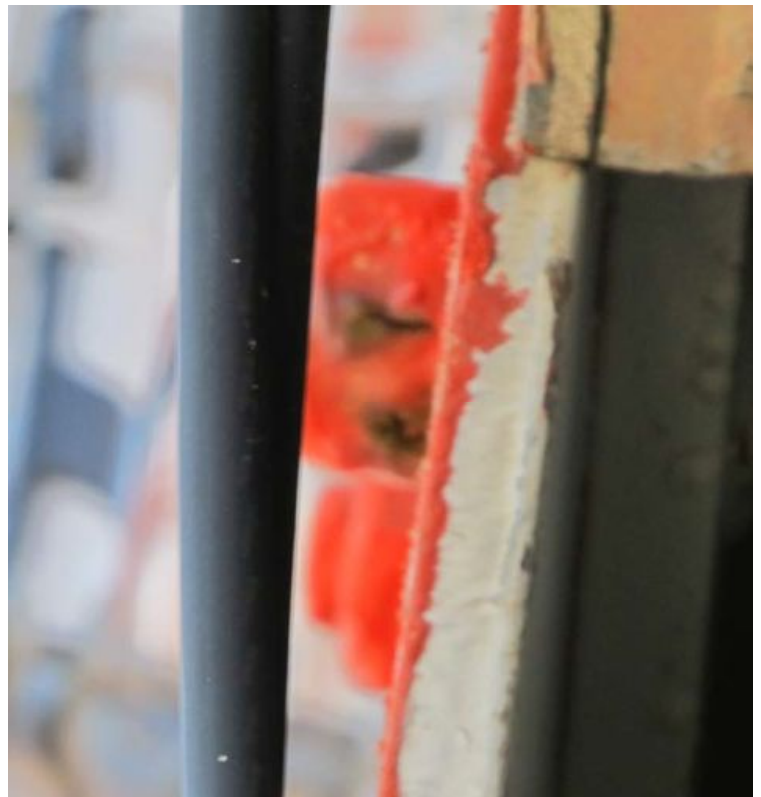


Photo 04.JPG
10/17/2013



Photo 05.JPG
10/17/2013



Photo 06.JPG
10/17/2013



Photo 07.JPG
10/17/2013



Photo 08.JPG
10/17/2013



Photo 09.JPG
10/17/2013

Inspection Data Sheet: East Truss (Level 3)

Bay No.	Member Identification			Type	Inspection Location
	From	To	Code		
1	U	3.07	C	1	RP (1)
2	U	3.6	C	2	RP (1)
3	L	3.1	C	3	RP (1)
4	U	3.7	C	4	RP (1)
5	L	3.6	C	5	RP (1)
6	U	3.9	C	6	RP (1)
7	U	3.5	C	7	RP (1)
8	L	3.8	C	8	RP (1)
9	U	3.3	C	9	RP (1)
10	L	3.1	C	10	RP (1)
11	U	3.1	C	11	RP (1)
12	H	3.8	C	12	RP (1)
13	L	3.8	C	13	RP (1)
14	H	3.4	C	14	RP (1)
15	H	3.3	C	15	RP (1)
Total Truss				Type	
San Francisco, CA				Date	
				Page 1 of 1	
				Rev 01/15	

1 Check member inspection: U = upper chord, L = lower chord, H = horizontal

2 Bay inspection: C = column, V = vertical, D = diagonal, S = connection, and B = brace

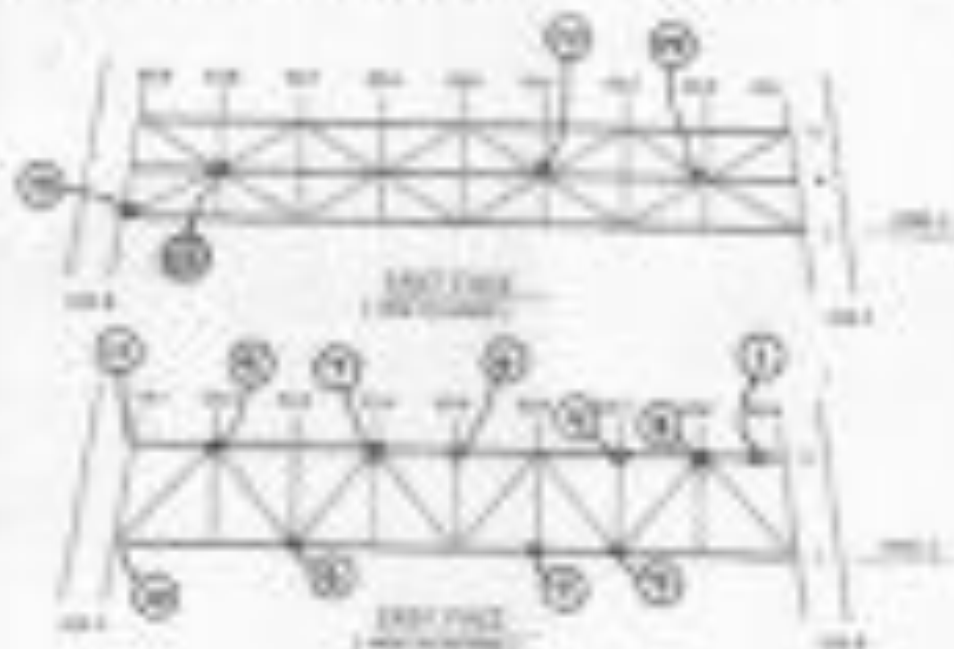




Photo 01.JPG
10/17/2013

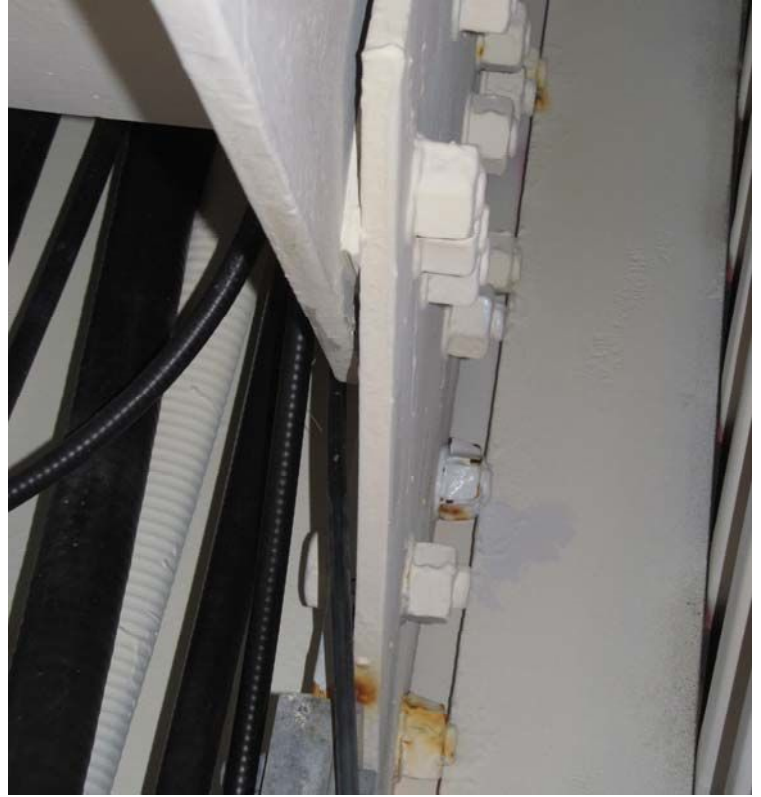


Photo 02.JPG
10/17/2013



Photo 03.JPG
10/17/2013



Photo 04.JPG
10/17/2013



Photo 05.JPG
10/17/2013

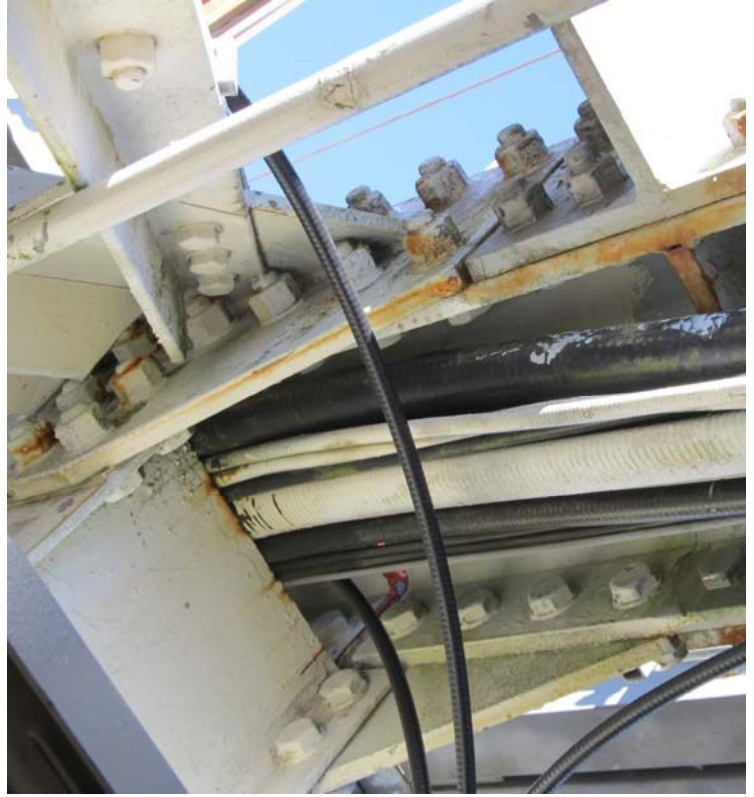


Photo 06.JPG
10/17/2013



Photo 07.JPG
10/17/2013



Photo 08.JPG
10/17/2013



Photo 09.JPG
10/17/2013



Photo 10.JPG
10/17/2013



Photo 11.JPG
10/17/2013



Photo 12.JPG
10/17/2013



Photo 13.JPG
10/17/2013



Photo 14.JPG
10/17/2013



Photo 15.JPG
10/17/2013



Photo 01.JPG
11/12/2013



Photo 02.JPG
11/12/2013



Photo 03.JPG
11/12/2013



Photo 04.JPG
11/12/2013

Strands, Misc.



Photo 05.JPG
11/12/2013



Photo 06.JPG
11/12/2013



Photo 07.JPG
11/12/2013



Photo 08.JPG
11/12/2013

Strands, Misc.



Photo 09.JPG
11/12/2013



Photo 10.JPG
11/12/2013



Photo 11.JPG
11/12/2013



Photo 12.JPG
11/12/2013

Strands, Misc.



Photo 13.JPG
9/26/2013



Photo 14.JPG
9/27/2013



Photo 15.JPG
9/27/2013



Photo 16.JPG
9/27/2013

Strands, Misc.



Photo 1.JPG
11/12/2013



Photo 2.JPG
11/12/13



Photo 3.JPG
11/12/13



Photo 4.JPG
11/12/13

Bases, Misc.



Photo 5.JPG
11/12/13



Photo 6.JPG
11/12/13



Photo 7.JPG
11/12/13

Bases, Misc.