



Photo 01.JPG
12/27/2012



Photo 02.JPG
12/27/2012



Photo 03.JPG
12/27/2012



Photo 04.JPG
12/27/2012



Photo 05.JPG
12/27/2012



Photo 06.JPG
12/27/2012

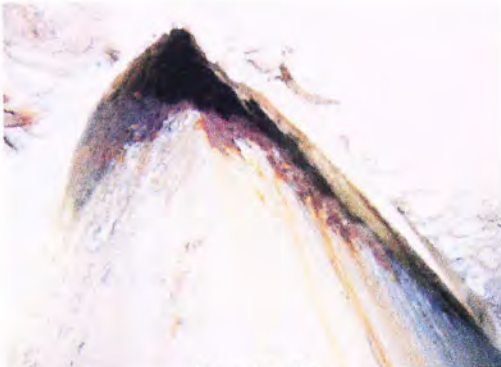


Photo 07.JPG
12/27/2012



Photo 08.JPG
12/27/2012



Photo 09.JPG
12/27/2012



Photo 10.JPG
12/27/2012



Photo 11.JPG
12/27/2012



Photo 12.JPG
12/27/2012

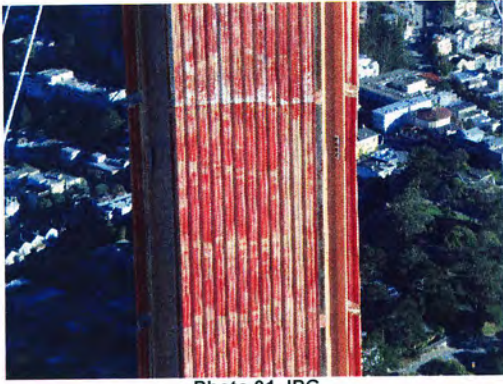


Photo 01.JPG
12/27/2012



Photo 02.JPG
12/27/2012

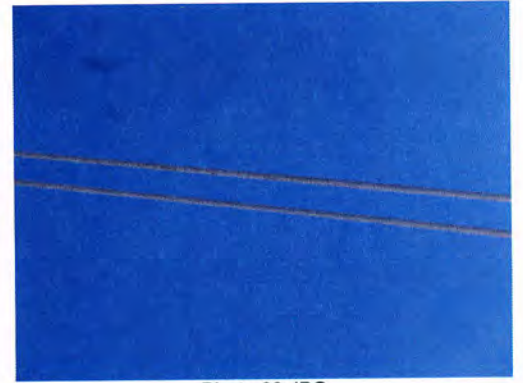


Photo 03.JPG
12/27/2012

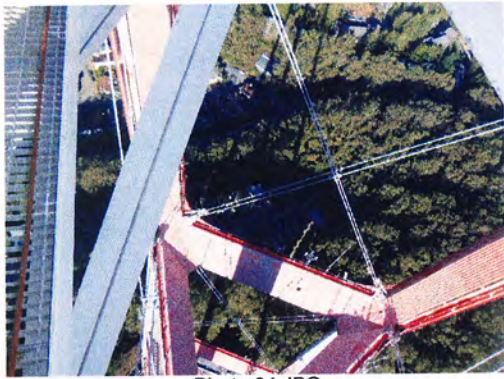


Photo 04.JPG
12/27/2012



Photo 05.JPG
12/27/2012



Photo 06.JPG
12/27/2012

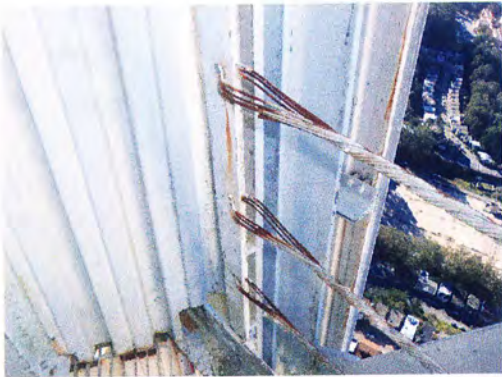


Photo 07.JPG
12/27/2012



Photo 08.JPG
12/27/2012

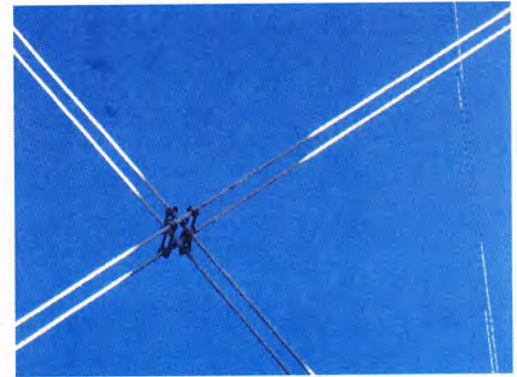


Photo 09.JPG
12/27/2012

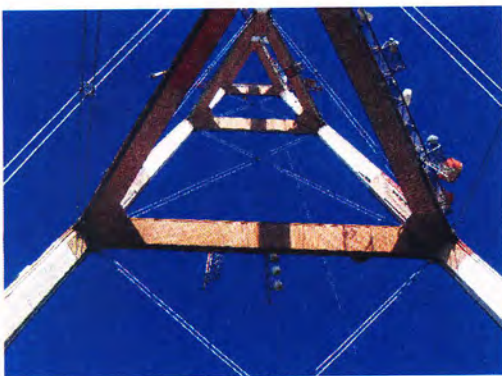


Photo 10.JPG
12/27/2012

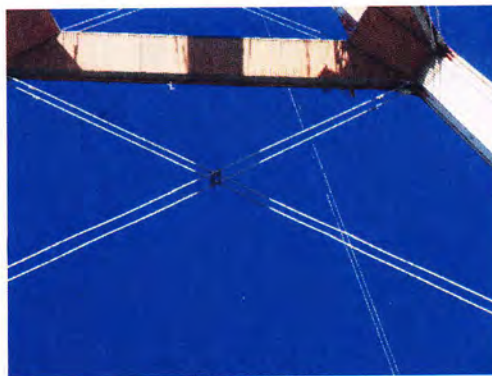


Photo 11.JPG
12/27/2012



Photo 12.JPG
12/27/2012

Strands, Misc.

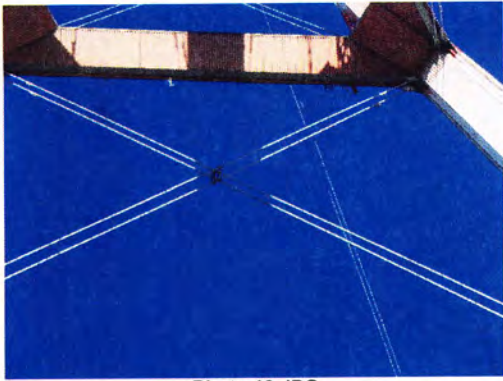


Photo 13.JPG
12/27/2012



Photo 14.JPG
12/27/2012

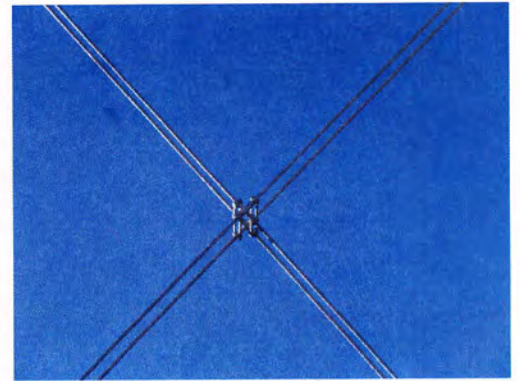
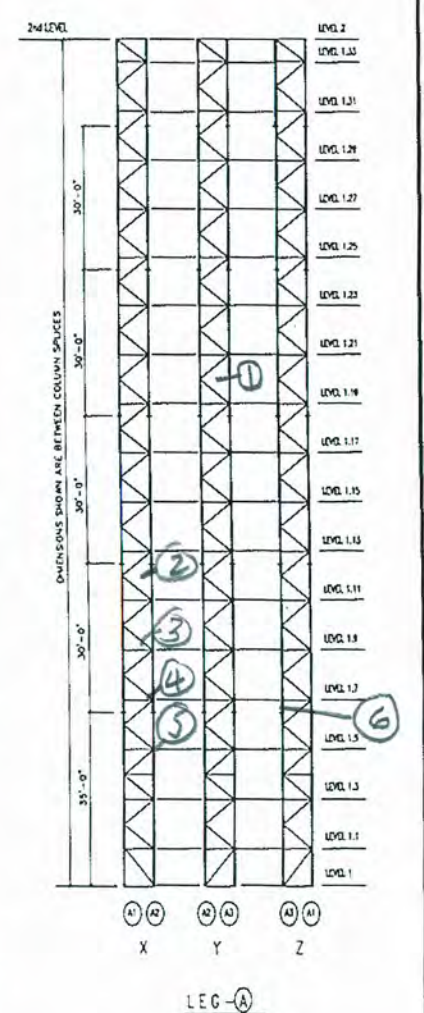


Photo 15.JPG
12/27/2012

Inspection Data Sheet: Leg A (Level 1 to Level 2)

Observ. No.	Location / Identification			Photo No.	Observation Comments
	Column	Elevation	Item ¹		
1	2-3	1.20	EL. BOX	1	ANCHORAGE STRAP FOR ELEC. BOX CORRODED AWAY
2	2	1.19	PIPE	2	CONDUIT CORR. THRU WALL
3	2	1.13	PIPE	3	" " " "
4	2	1.17	PIPE	4	" UNION CORRODED
5	2	1.15	PIPE	—	" CORR. THRU WALL
6	3	1.17	PIPE	5	" UNION CORRODED
Sutro Tower				Signature: _____	Page: _____ of _____
San Francisco, CA				File: _____	Date: 12-10-12



¹ Item designation: L=leg member, D=diagonal, H=horizontal, C=connection, O=others



Photo 1.JPG
12/10/2012



Photo 2.JPG
12/10/2012



Photo 3.JPG
12/10/2012



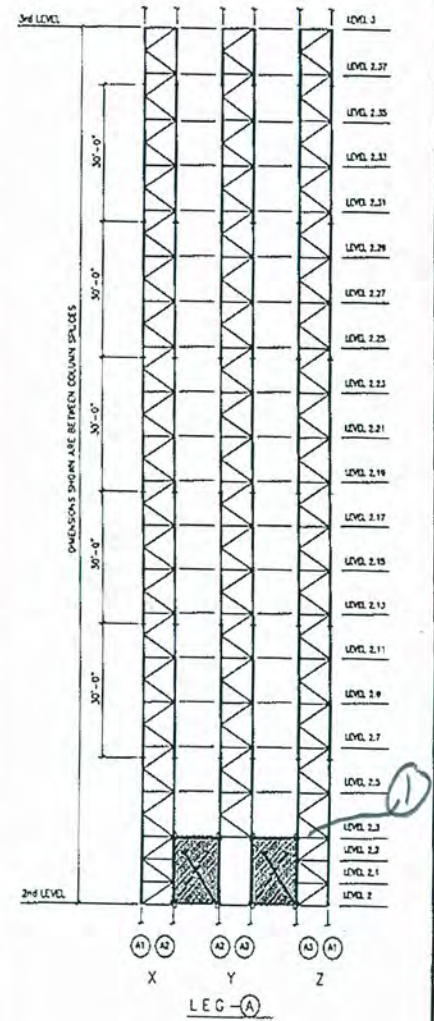
Photo 4.JPG
12/10/2012



Photo 5.JPG
12/10/2012

Inspection Data Sheet: Leg A (Level 2 to Level 3)

Observ. No.	Location / Identification			Photo No.	Observation Comments
	Column	Elevation	Item ¹		
1	3	2.3	C	1	RF (210) @ TOP CHD CONN. #
					NO OTHER DISTRESS NOTED RECENTLY CLEANED & PAINTED



Sutro Tower	Signature: _____	Page: <u>1</u> of <u>1</u>
San Francisco, CA	File: _____	Date: <u>12-10-12</u>

¹ Item designation: L=leg member, D=diagonal, H=horizontal, C=connection, O=others



Photo 1.JPG
12/10/2012



Photo 1.JPG
12/11/2012



Photo 2.JPG
12/11/2012



Photo 3.JPG
12/11/2012

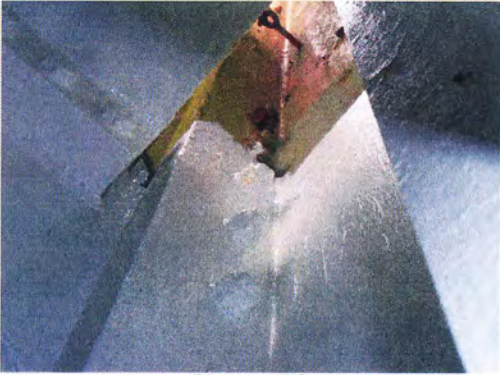


Photo 4.JPG
12/11/2012



Photo 5.JPG
12/11/2012



Photo 6.JPG
12/11/2012



Photo 1.JPG
12/11/2012

Inspection Data Sheet: North Truss (Level 4)

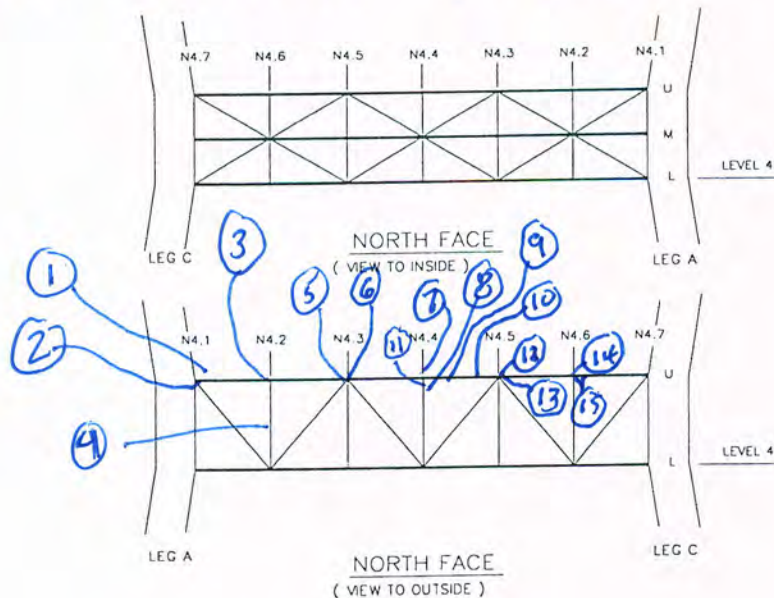
Observ. No.	Location / Identification			Photo No.	Inspection Comments
	Chord ¹	Horiz. Location	Item ²		
1	U	4.1	F	1	Loose bolts (6) @ SKIN EL. COND.
2	U	4.1	C	2	RF (2)
3	U	4.2	C	3	CORR. @ X FOR SKIN
4	X	4.2	C	4	CORR. @ X FOR SKIN
5	U	4.3	C	5	RF (11), CORR. @ DIAG. & TOP CHORD
6	"	"	"	6	RF (8)
7	U	4.4	C	7	RF (4)
8	V	4.4	V	8	CORR. @ FLG
9	U	4.4	H	9	" " "
10	U	4.5	H	10	" " " @ BRKT
11	V	4.4	V	11	" " TOP OF SKIN COLUMN
12	U	4.5	C	12	RF (10) & CORR. @ WEB & DIAG.
13	U	4.5	"	13	RF (13)
14	U	4.6	"	14	RF (3) & CORR. @ WEB OF TOP CHORD
15	U	4.6	H	15	▲

Sutro Tower	Signature: _____	Page: <u>1</u> of <u>3</u>
San Francisco, CA	File: _____	Date: <u>12/11/12</u>

¹ Chord member designation: U = upper, M = middle, and L = lower

² Item designation: H = horizontal, V = vertical, D = diagonal, C = connection, and O = others

F = FASTENER G = GUSSET X = ANGLE

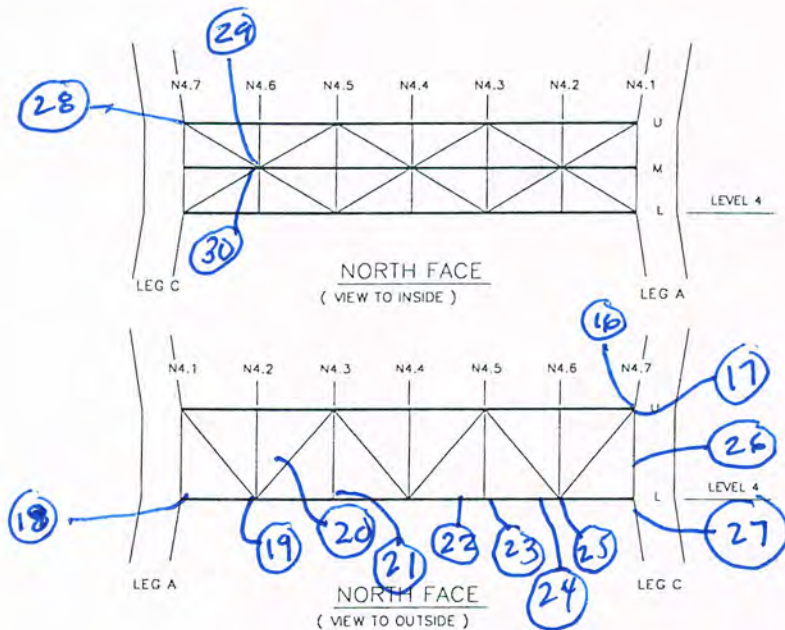


Inspection Data Sheet: North Truss (Level 4)

Observ. No.	Location / Identification			Photo No.	Inspection Comments
	Chord ¹	Horiz. Location	Item ²		
16	U	4.7	C	16	RF (14)
17	"	"	C	17	SAME CORR
18	L	4.1	C	18	RF (6)
19	L	4.2	KR	19	KNIFE PLATE TO COL. CATCH POINT (TOP)
20	ELEC. BX	4.2-4.3	EL. BOX	20	ELEC. BOXES CORRODED TURN
21	L	4.3	C	21	RF (3) + CORR. @ WEB of L. CHORD
22	L	4.5	X	22	CORR of SKIN ATTACHMENT X @ H. CHORD
23	L	4.5	C	23	RF (5) + CORR. @ FLG of COL.
24	L	4.6	X	24	SAME
25	L	4.6	C	25	RF (17)
26	V	4.7	V	26	CORR @ WEB of COL.
27	V	4.7	V	27	RF (3) @ EXT. BELOW SKW CHANNEL
28	D	4.7	C	28	RF (1)
29	M	4.6	C	29	RF (5)
30	M	4.6	C	30	CORR. @ PLATE
Sutro Tower				Signature: _____	Page: <u>2</u> of <u>3</u>
San Francisco, CA				File: _____	Date: <u>12/11/12</u>

¹ Chord member designation: U = upper, M = middle, and L = lower

² Item designation: H = horizontal, V = vertical, D = diagonal, C = connection, and O = others



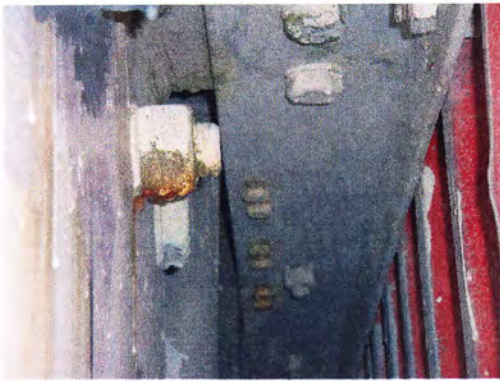


Photo 01.JPG
12/11/2012

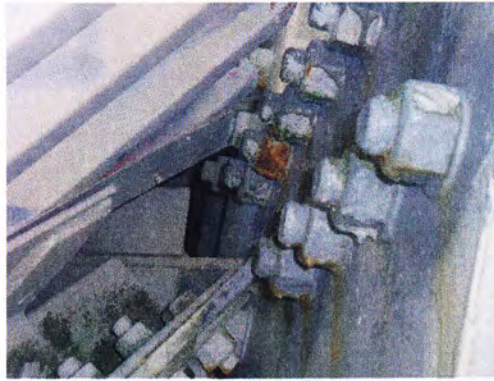


Photo 02.JPG
12/11/2012



Photo 03.JPG
12/11/2012



Photo 04.JPG
12/11/2012



Photo 05.JPG
12/11/2012



Photo 06.JPG
12/11/2012



Photo 07.JPG
12/11/2012



Photo 08.JPG
12/11/2012

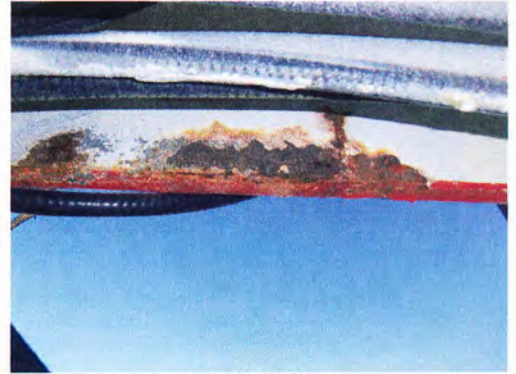


Photo 09.JPG
12/11/2012



Photo 10.JPG
12/11/2012



Photo 11.JPG
12/11/2012

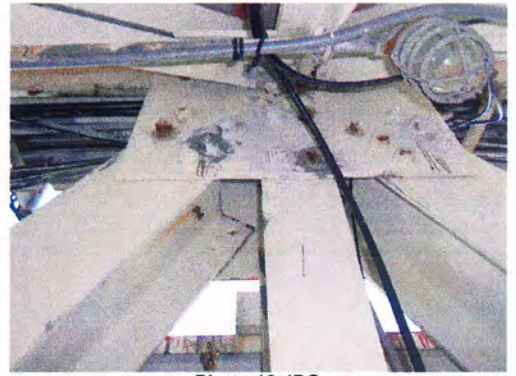


Photo 12.JPG
12/11/2012



Photo 13.JPG
12/11/2012



Photo 14.JPG
12/11/2012



Photo 15.JPG
12/11/2012



Photo 16.JPG
12/11/2012



Photo 17.JPG
12/11/2012



Photo 18.JPG
12/11/2012



Photo 19.JPG
12/11/2012

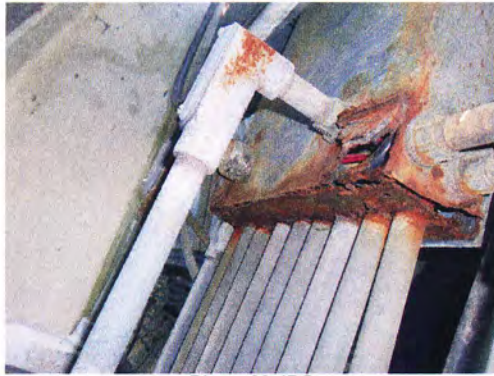


Photo 20.JPG
12/11/2012



Photo 21.JPG
12/11/2012



Photo 22.JPG
12/11/2012

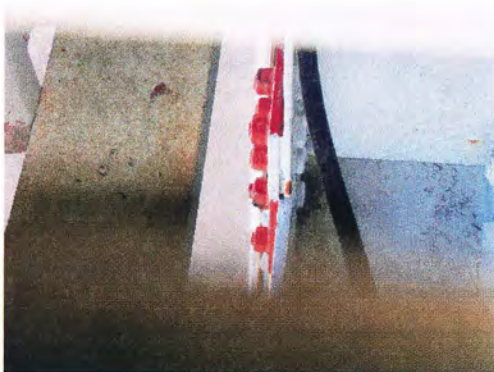


Photo 23.JPG
12/11/2012



Photo 24.JPG
12/11/2012



Photo 25.JPG
12/11/2012



Photo 26.JPG
12/11/2012



Photo 27.JPG
12/11/2012



Photo 28.JPG
12/11/2012



Photo 29.JPG
12/11/2012



Photo 30.JPG
12/11/2012



Photo 31.JPG
12/11/2012



Photo 32.JPG
12/11/2012



Photo 33.JPG
12/11/2012



Photo 34.JPG
12/11/2012

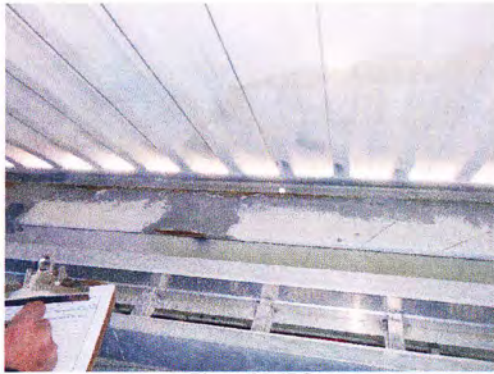


Photo 35.JPG
12/11/2012



Photo 36.JPG
12/11/2012



Photo 37.JPG
12/11/2012

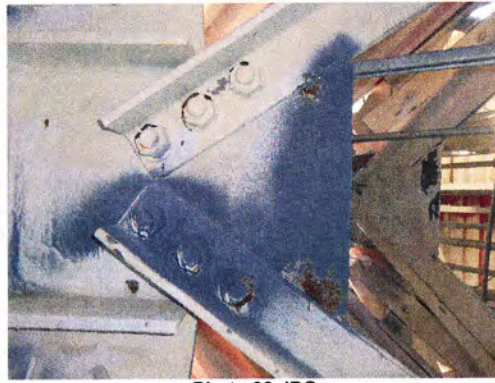
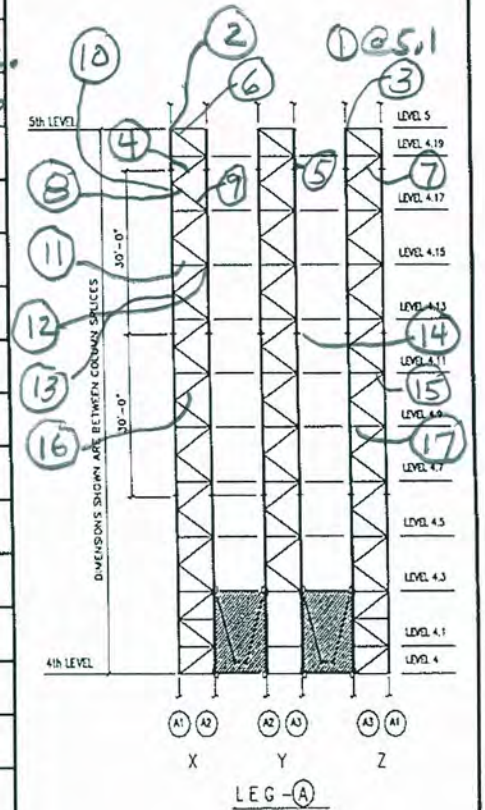


Photo 38.JPG
12/11/2012

Inspection Data Sheet: Leg A (Level 4 to Level 5)

Observ. No.	Location / Identification			Photo No.	Observation Comments
	Column	Elevation	Item ¹		
1	1-3	5.1	BRKT	1	RF (1) @ ELEV. GUIDE RAIL BRKT
2	1	5.1	TYP	2	CORR POCKET, OCCURS OTHER LOC.
3	3	5.0	C	3	RF (1) @ GUSSET OF TRUSS BTM CHD
4	1	4.18	C	4	RF (1)
5	3	4.19	C	5	RF (1) @ SKIN
6	1	5.10	C	6	RF (3)
7	1	4.19	C	7	RF (3)
8	1	4.18	C	8	RF (2)
9	2	4.17	C	9	RF (1) NOT VIS. IN PHOTO
10	1	4.18	L	10	RF (3) @ DBL PL
11	1	4.15	C	11	RF (1)
12	2	4.15	C	12	RF (2) @ SKIN
13	1	4.14	C	13	RF (1)
14	3	4.12	L	14	RF (2) @ DBL PL
15	1	4.11	C	15	RF (1) @ SKIN
16	1	4.10	C	16	RF (2)
17	3	4.9	C	17	RF (1)
Sutro Tower				Signature:	Page: <u>1</u> of <u>2</u>
San Francisco, CA				File:	Date: <u>12-10-12</u>



¹ Item designation: L=leg member, D=diagonal, H=horizontal, C=connection, O=others



Photo 01.JPG
12/10/2012



Photo 02.JPG
12/10/2012



Photo 03.JPG
12/10/2012



Photo 04.JPG
12/10/2012



Photo 05.JPG
12/10/2012



Photo 06.JPG
12/10/2012



Photo 07.JPG
12/10/2012

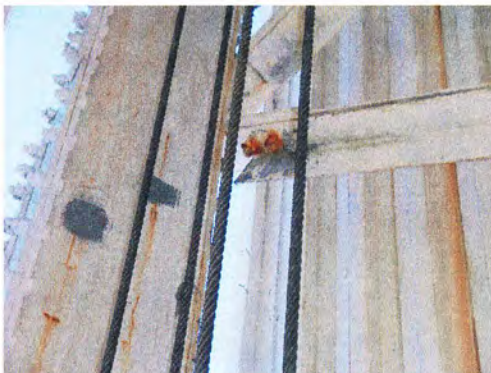


Photo 08.JPG
12/10/2012



Photo 09.JPG
12/10/2012



Photo 10.JPG
12/10/2012



Photo 11.JPG
12/10/2012



Photo 12.JPG
12/10/2012



Photo 13.JPG
12/10/2012



Photo 14.JPG
12/10/2012



Photo 15.JPG
12/10/2012



Photo 16.JPG
12/10/2012



Photo 17.JPG
12/10/2012



Photo 18.JPG
12/10/2012



Photo 19.JPG
12/10/2012



Photo 20.JPG
12/10/2012

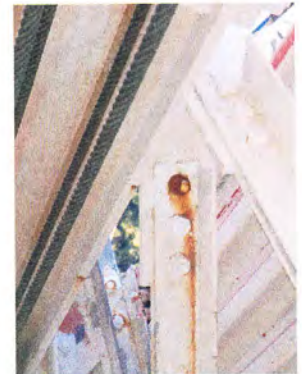


Photo 21.JPG
12/10/2012



Photo 22.JPG
12/10/2012



Photo 23.JPG
12/10/2012



Photo 24.JPG
12/10/2012



Photo 25.JPG
12/10/2012



Photo 26.JPG
12/10/2012



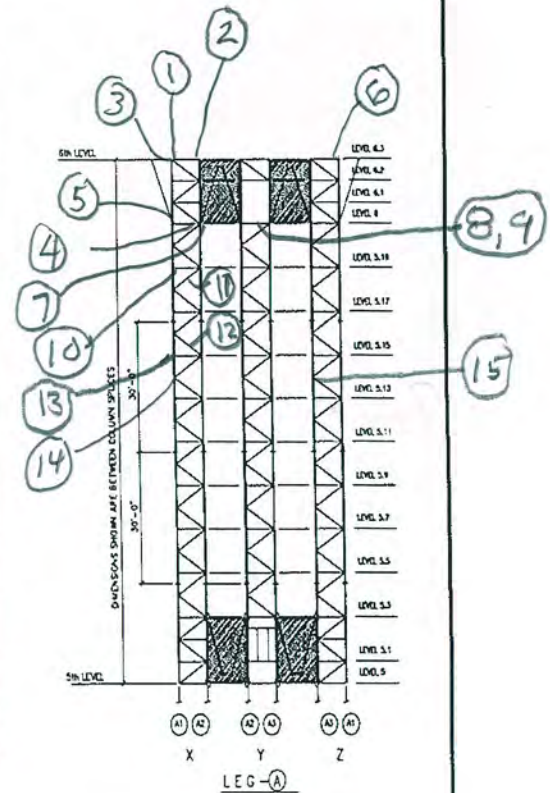
Photo 27.JPG
12/10/2012



Photo 28.JPG
12/10/2012

Inspection Data Sheet: Leg A (Level 5 to Level 6)

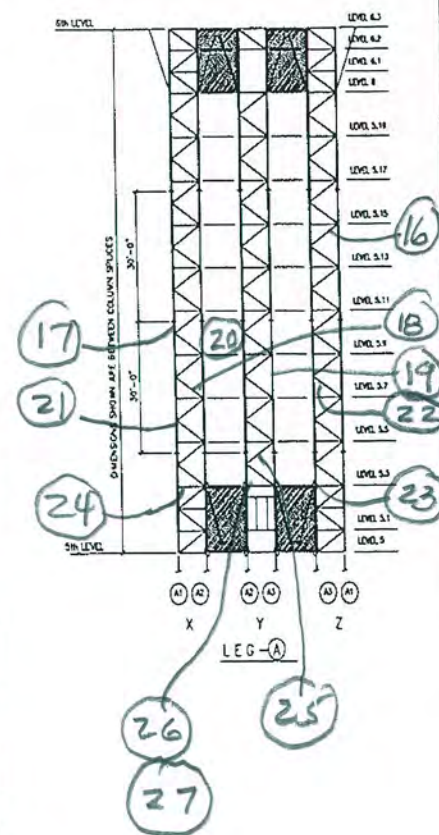
Observ. No.	Location / Identification			Photo No.	Observation Comments
	Column	Elevation	Item ¹		
1	1	6.3	C	1	RF(2)
2	2	6.3	C	2	RF(1)
3	1	6.3	C	3	RF(1)
4	2	6.0	C	4	RF(1)
5	1	6.0	C	5	RF(2)
6	1	6.3	C	C	RF(1)
7	2	6.0	L	7	CORR. WEB
8	2-3	6.0		8	RF(2) @ LARGE KNUCKLE DEVICE
9	2-3	6.0		9	CORR @ EYELETS of " "
10	1	5.19	C	10	RF(1)
11	2	5.19	C	11	RF(1)
12	2&3	TYP	K R	12	CORR POCKET @ KNIFE R TO COL THIS CONDITION IS TYPICAL AT NUMEROUS LOCATIONS
13	1	5.15	ELIC	13	CORR. @ ELEV. CABLE GUIDE X's
14	1	TYP	K R	14	KNIFE R POCKET - TYPICAL
15	3	5.14	C	15	RF(1)
Sutro Tower				Signature: _____	Page: <u>1</u> of <u>2</u>
San Francisco, CA				File: _____	Date: <u>12-10-12</u>



¹ Item designation: L=leg member, D=diagonal, H=horizontal, C=connection, O=others

Inspection Data Sheet: Leg A (Level 5 to Level 6)

Observ. No.	Location / Identification			Photo No.	Observation Comments
	Column	Elevation	Item ¹		
16	1	5.13	C	16	RF (1)
17	1	5.11	L	17	RF (1) - EXT. SIDE FROM OBS. PLATFORM MORE RF BELOW
18	2	5.7	C	18	RF (1)
19	3	5.8	C	19	RF (1)
20	2	5.10	EL. BOX	20	BOTTOM OF ELEC. BOX CORR.
21	1	5.7	C	21	CORR. @ 45° BENT PL - POCKET
22	3	5.8	C	22	RF (1)
23	3	5.3	C	23	RF (3) @ CONN. PL OF TRUSS
24	1	5.3	C	24	RF (1)
25	2	5.4	C	25	RF (2)
26	2	5.3	C	26	RF (1) @ DBL PL
27	2	5.3	BRKT	27	RF (1) @ PIPE CLAMP CONN.
Sutro Tower				Signature:	Page: <u>2</u> of <u>2</u>
San Francisco, CA				File:	Date: <u>12-10-12</u>



¹ Item designation: L=leg member, D=diagonal, H=horizontal, C=connection, O=others



Photo 01.JPG
12/10/2012



Photo 02.JPG
12/10/2012



Photo 03.JPG
12/10/2012



Photo 04.JPG
12/10/2012



Photo 05.JPG
12/10/2012



Photo 06.JPG
12/10/2012



Photo 07.JPG
12/10/2012



Photo 08.JPG
12/10/2012



Photo 09.JPG
12/10/2012

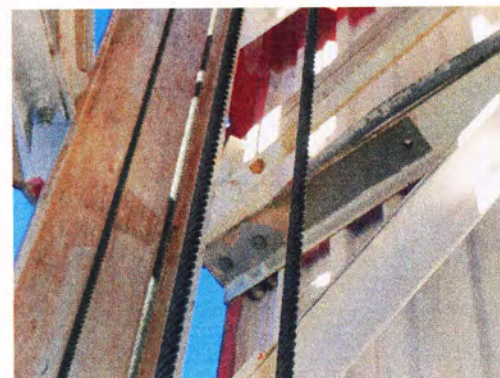


Photo 10.JPG
12/10/2012

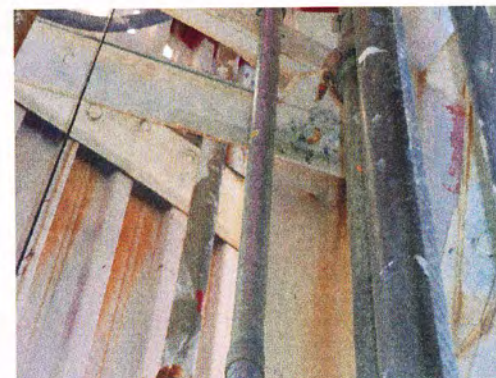


Photo 11.JPG
12/10/2012



Photo 12.JPG
12/10/2012



Photo 13.JPG
12/10/2012

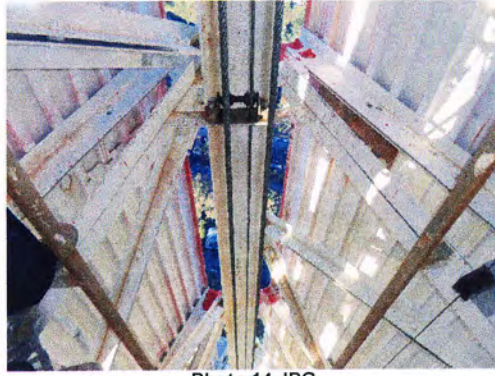


Photo 14.JPG
12/10/2012



Photo 15.JPG
12/10/2012



Photo 16.JPG
12/10/2012

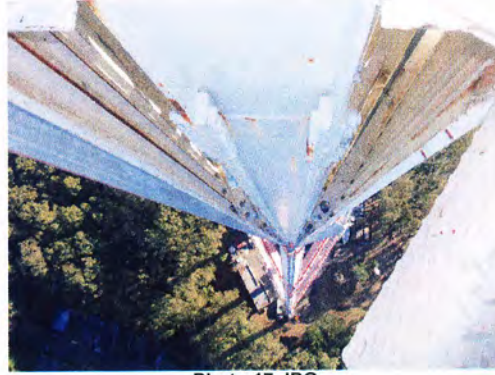


Photo 17.JPG
12/10/2012



Photo 18.JPG
12/10/2012



Photo 19.JPG
12/10/2012



Photo 20.JPG
12/10/2012



Photo 21.JPG
12/10/2012



Photo 22.JPG
12/10/2012



Photo 23.JPG
12/10/2012



Photo 24.JPG
12/10/2012



Photo 25.JPG
12/10/2012

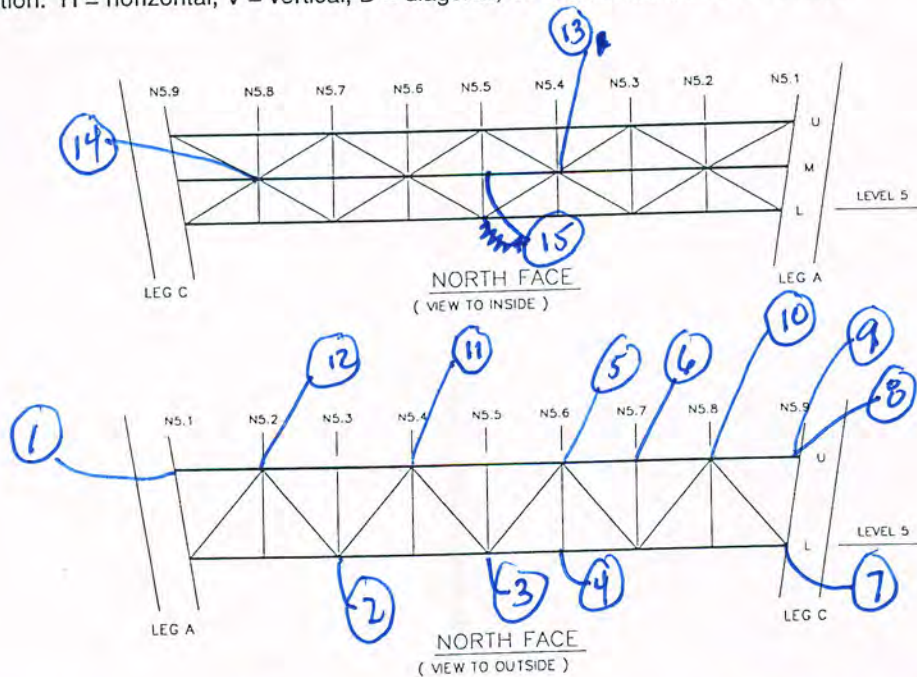


Photo 26.JPG
12/10/2012

Inspection Data Sheet: North Truss (Level 5)

Observ. No.	Location / Identification			Photo No.	Inspection Comments
	Chord ¹	Horiz. Location	Item ²		
1	T	S.1	C	1	RF(2)
2	B	S.3	C	2	RF(3) 2UP OUTSIDE
3	B	S.5	C	3	RF(3) @ OUTSIDE
4	B	S.6	C	4	RF(2)
5	T	S.6	C	5	RF(4) @ OUTSIDE
6	T/D	S.7	C	6	RF(2) 1@ FUG OF DIAG, 1@ INT GUSSET
7	B	S.9	C	7	RF(2) @ INT & RF(3) @ EXT.
8	T	S.9	C	8	RF(3) 1@ DIAGONAL, 2@ GUSSET
9	T	S.9	C	9	RF(4) @ EXT. + RUSTY COTTER PIN @ STRAND HITCH
10	T	S.8	C	10	RF(4) @ EXT.
11	T	S.4	C	11	RF(5) @ EXT.
12	T	S.2	C	12	RF(2) @ EXT.
13	M	S.4	C/O	13	RF(1)
14	M	S.8	M	14	RF(2)
15	M	S.5	C	15	RF(3) @ INT. CONN @ CTR FROM M. CHORD
Sutro Tower				Signature:	Page: <u>1</u> of <u>2</u>
San Francisco, CA				File:	Date: <u>12/11/12</u>

¹ Chord member designation: U = upper, M = middle, and L = lower
² Item designation: H = horizontal, V = vertical, D = diagonal, C = connection, and O = others



NOTE: EXT @ TOP CHORD ^{EXT.} ONLY PARTIALLY VISIBLE FROM TRUSS

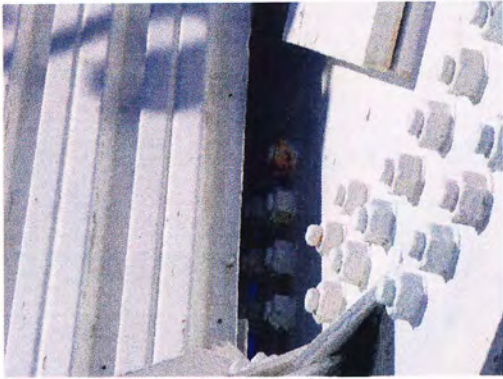


Photo 01.JPG
12/11/2012



Photo 02.JPG
12/11/2012

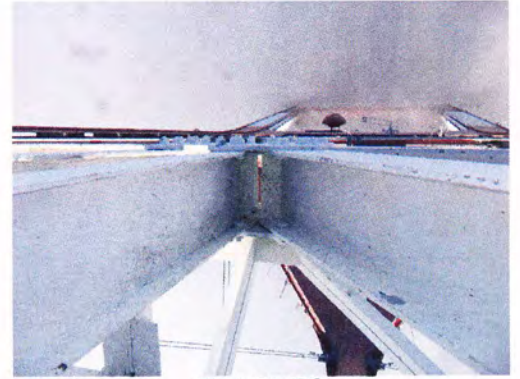


Photo 03.JPG
12/11/2012



Photo 04.JPG
12/11/2012

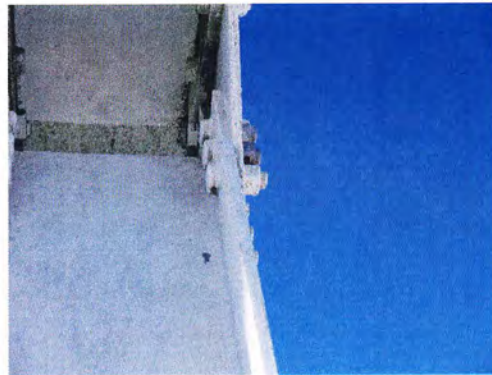


Photo 05.JPG
12/11/2012



Photo 06.JPG
12/11/2012

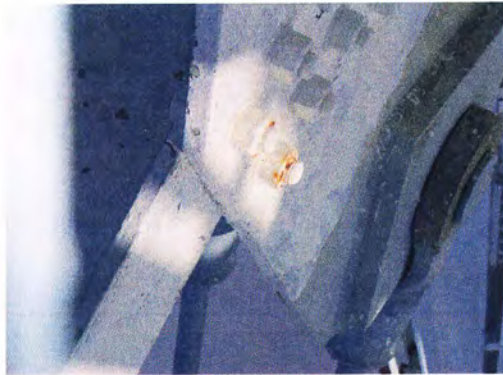


Photo 07.JPG
12/11/2012

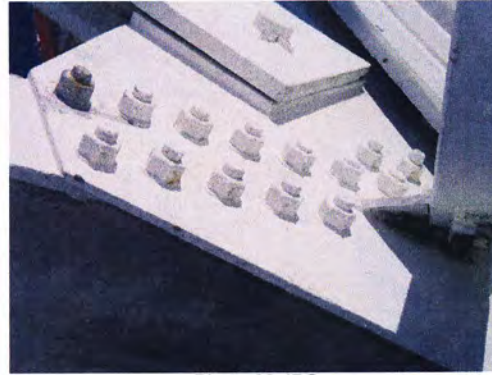


Photo 08.JPG
12/11/2012



Photo 09.JPG
12/11/2012



Photo 10.JPG
12/11/2012



Photo 11.JPG
12/11/2012



Photo 12.JPG
12/11/2012



Photo 13.JPG
12/11/2012

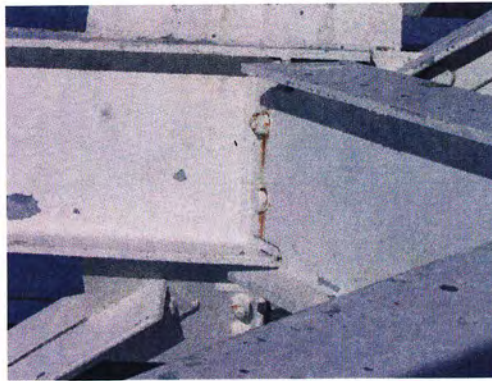


Photo 14.JPG
12/11/2012

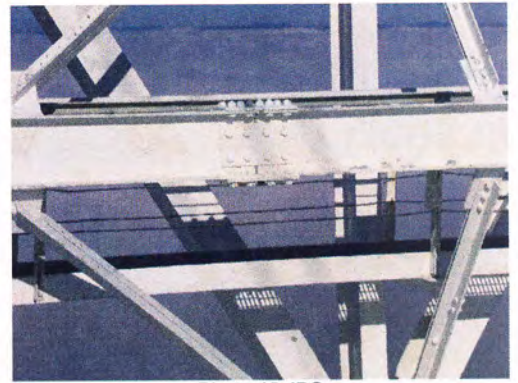


Photo 15.JPG
12/11/2012

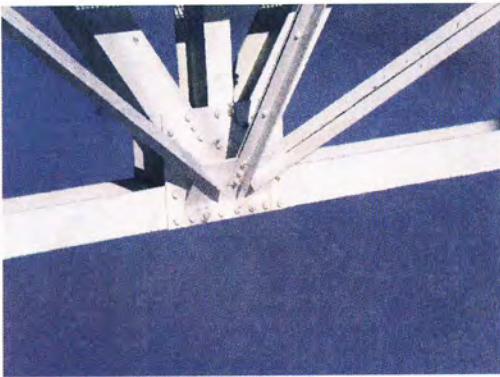


Photo 16.JPG
12/11/2012

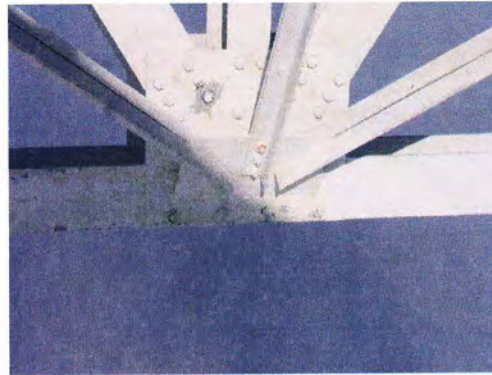


Photo 17.JPG
12/11/2012

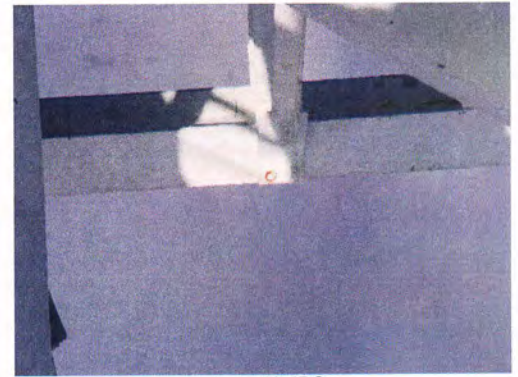


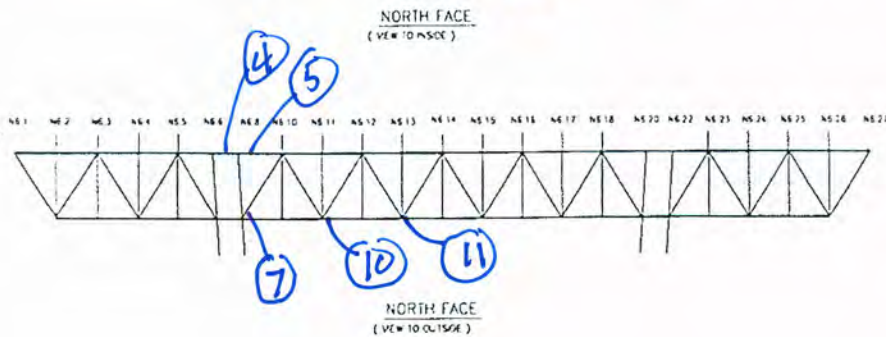
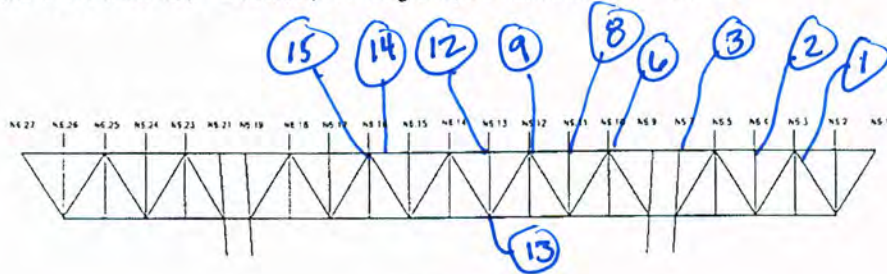
Photo 18.JPG
12/11/2012

Inspection Data Sheet: North Truss (Level 6)

Observ. No.	Location / Identification			Photo No.	Inspection Comments
	Chord ¹	Horiz. Location	Item ²		
1	T	6.3	C	1	RF (3)
2	T	6.4	C	2	RF (1)
3	T	6.7	C	3	RF (2)
4	T	6.7	C	4	RF (1)
5	T	6.8	C	5	RF (2)
6	T	6.10	C	6	RF (1)
7	B/D	6.8	C	7	RF (1)
8	T	6.11	C	8	RF (1)
9	T	6.12	C	9	RF (3)
10	B	6.11	C	10	RF (1)
11	B	6.13	C	11	RF (1)
12	T	6.13	C	12	RF (2)
13	V	6.13	C	13	RF (1)
14	T	6.14	C	14	RF (1) @ Top Chord Conn. PL
15	T	6.16	C	15	RF (6)

Sutro Tower	Signature: _____	Page: <u>1</u> of <u>4</u>
San Francisco, CA	File: _____	Date: <u>12-11-12</u>

¹ Chord member designation: OU = outer upper, OL = outer lower, IU = inner upper, and IL = inner lower
² Item designation: H = horizontal, V = vertical, D = diagonal, C = connection, O = others

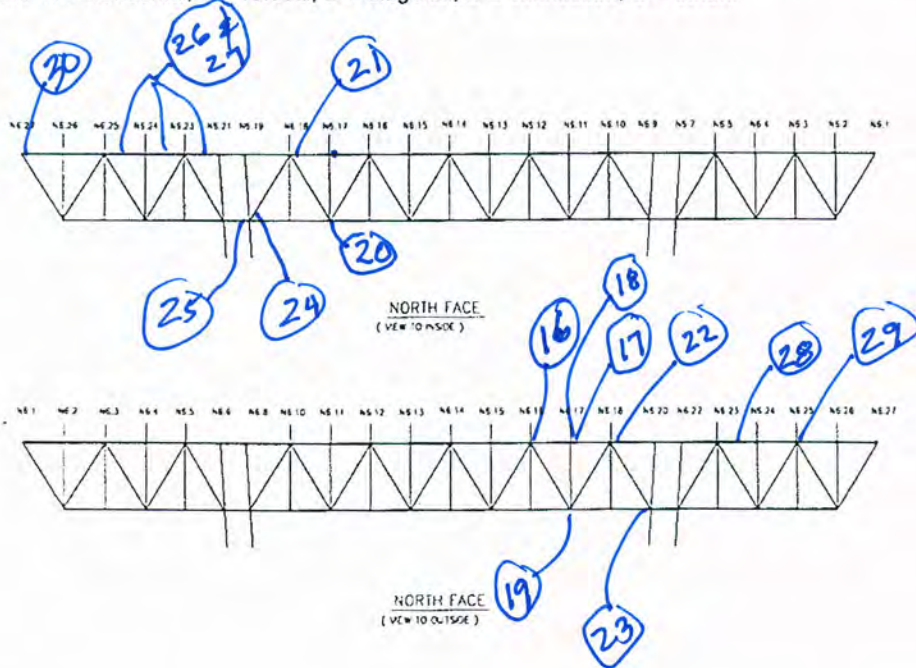


Inspection Data Sheet: North Truss (Level 6)

Observ. No.	Location / Identification			Photo No.	Inspection Comments
	Chord ¹	Horiz. Location	Item ²		
16	T	G.16	C	16	RF (3)
17	T	G.17	C	17	RF (2)
18	T	G.17	H	18	RF (3)
19	B	G.17	C	19	RF (1)
20	B	G.17	C	20	RF (2)
21	T	G.18	C	21	RF (5)
22	T	G.18	C	22	RF (3)
23	B	G.20	C	23	CORR. @ WEB & KNIFE R + (2) RF
24	B	G.19	C	24	RF (2)
25	B	G.19	BLK	25	RF (2) @ LARGE KNIFE DEVICE
26	T	G.21	H	26	RF ALL ALONG G.21-G.25
27	T	-G.25	H	27	" " " " "
28	T	G.23/G.24	H	28	" " " G.23-G.24
29	T	G.25	C	29	RF (3)
30	RAILING	G.27	EXL ING	30	BOLT MISSING

Sutro Tower	Signature: _____	Page: <u>2</u> of <u>4</u>
San Francisco, CA	File: _____	Date: <u>12-27-12</u>

¹ Chord member designation: OU = outer upper, OL = outer lower, IU = inner upper, and IL = inner lower
² Item designation: H = horizontal, V = vertical, D = diagonal, C = connection, O = others

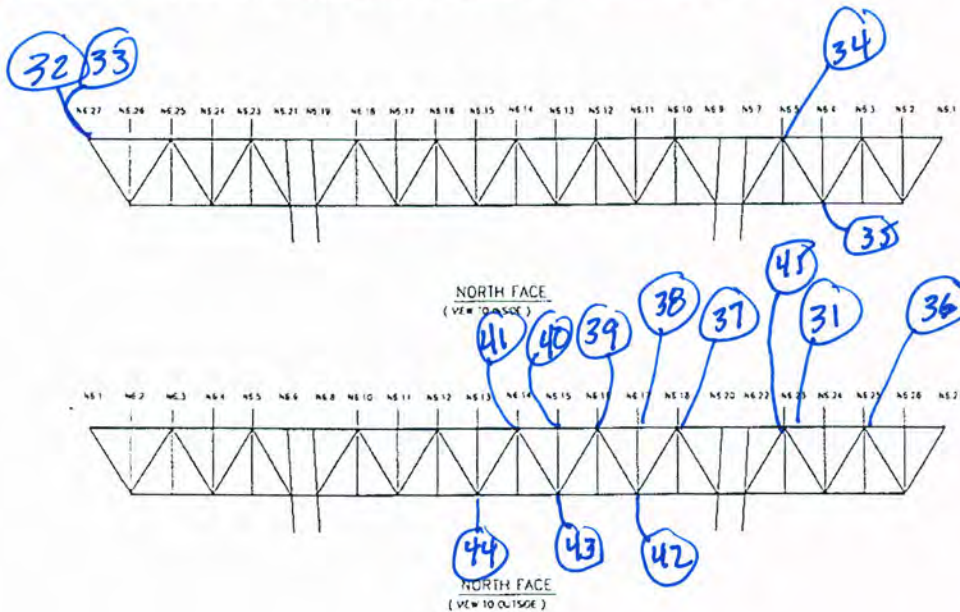


Inspection Data Sheet: North Truss (Level 6)

Observ. No.	Location / Identification			Photo No.	Inspection Comments
	Chord ¹	Horiz. Location	Item ²		
31	T	6.23/6.24	H	31	RF ALL ALONG 6.23-6.24
32	T	EAST END	WIRE	32	SAFETY WIRE SAGGING & LOOPED
33	"	"	"	"	OVER UPPER POST. TIGHTEN & RUN WIRE THROUGH A HOLE.
34	T	6.23	C	34	RF (3)
35	B	6.23	C	35	RF (1)
36	T	6.25	C	36	RF (1) & CORR. @ LS
37	T	6.18	C	37	RF (16)
38	T	6.17	C	38	RF (6)
39	T	6.16	C	39	RF (13)
40	T	6.15	C	40	RF (6)
41	T	6.14	C	41	RF (7)
42	B	6.17	C	42	RF (1)
43	B	6.15	C	43	RF (10)
44	B	6.13	C	44	RF (4)
Sutro Tower				Signature:	Page: <u>3</u> of <u>4</u>
San Francisco, CA				File:	Date: <u>12-27-12</u>

¹ Chord member designation: OU = outer upper, OL = outer lower, IU = inner upper, and IL = inner lower

² Item designation: H = horizontal, V = vertical, D = diagonal, C = connection, O = others



Inspection Data Sheet: North Truss (Level 6)

Observ. No.	Location / Identification			Photo No.	Inspection Comments
	Chord ¹	Horiz. Location	Item ²		
45	T	G.23	C	45	RF (3)
46	T	G.10	C	46	RF (4)
47	T	G.12	C	47	RF (3)
48	V	G.4	V	48	RF (1)
49	T	G.23	D	49	RF (2)
50	V	G.3	V	50	RF LOOSE BOLT
51	B	G.10	H	51	RF RF (1)
52	B	G.11	H	52	RF (3)
53	B	G.12	H	53	RF (1)
54	B	G.13	H	54	RF (1)
55	B	G.16	H	55	RF (3)
56	B	G.17	H	56	RF (2)
57	B	G.18	H	57	RF (2)
Sutro Tower				Signature:	Page: <u>4</u> of <u>4</u>
San Francisco, CA				File:	Date: <u>12-27-12</u>

¹ Chord member designation: OU = outer upper, OL = outer lower, IU = inner upper, and IL = inner lower
² Item designation: H = horizontal, V = vertical, D = diagonal, C = connection, O = others

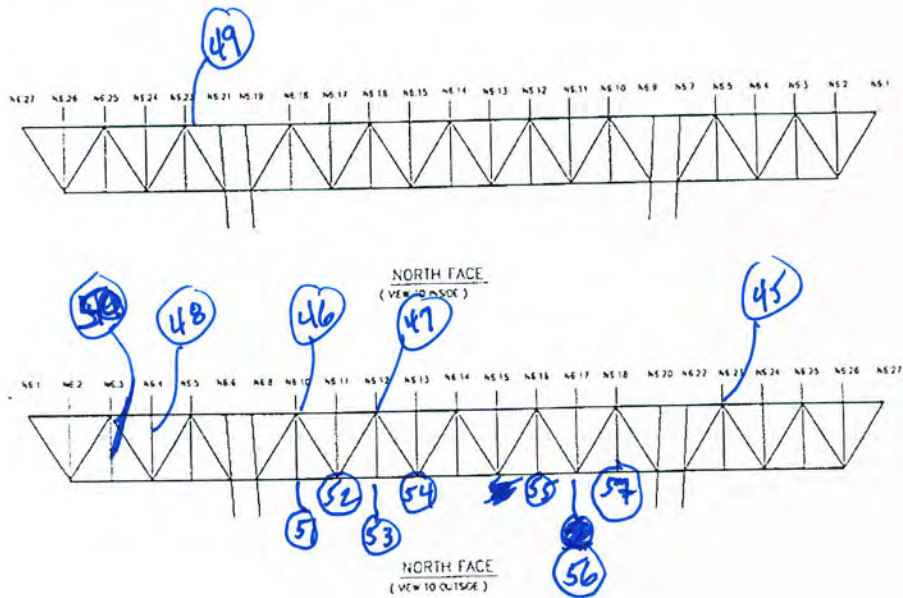




Photo 01.JPG
12/11/2012



Photo 02.JPG
12/11/2012



Photo 03.JPG
12/11/2012



Photo 04.JPG
12/11/2012



Photo 05.JPG
12/11/2012



Photo 06.JPG
12/11/2012



Photo 07.JPG
12/11/2012



Photo 08.JPG
12/11/2012



Photo 09.JPG
12/11/2012



Photo 10.JPG
12/11/2012



Photo 11.JPG
12/11/2012

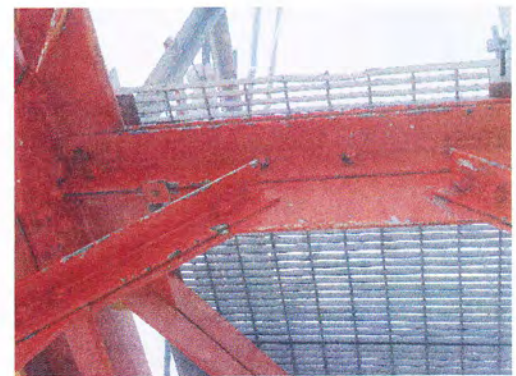


Photo 12.JPG
12/11/2012



Photo 13.JPG
12/11/2012



Photo 14.JPG
12/11/2012



Photo 15.JPG
12/11/2012



Photo 16.JPG
12/27/2012



Photo 17.JPG
12/27/2012



Photo 18.JPG
12/27/2012

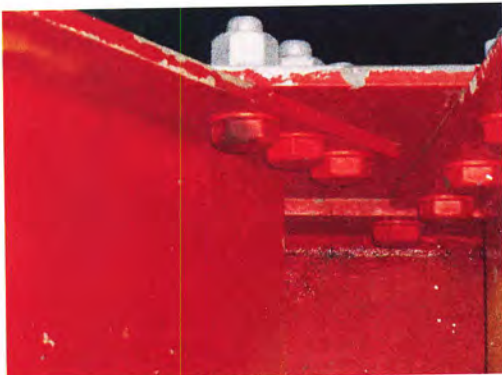


Photo 19.JPG
12/27/2012



Photo 20.JPG
12/27/2012



Photo 21.JPG
12/27/2012



Photo 22.JPG
12/27/2012



Photo 23.JPG
12/27/2012



Photo 24.JPG
12/27/2012



Photo 25.JPG
12/27/2012



Photo 26.JPG
12/27/2012



Photo 27.JPG
12/27/2012



Photo 28.JPG
12/27/2012



Photo 29.JPG
12/27/2012



Photo 30.JPG
12/27/2012



Photo 31.JPG
12/27/2012

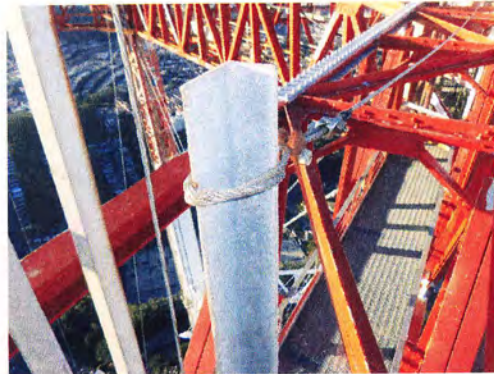


Photo 32.JPG
12/27/2012



Photo 33.JPG
12/27/2012



Photo 34.JPG
12/27/2012

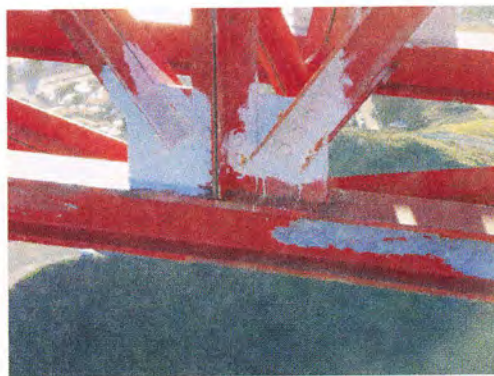


Photo 35.JPG
12/27/2012



Photo 36.JPG
12/27/2012



Photo 37.JPG
12/27/2012



Photo 38.JPG
12/27/2012



Photo 39.JPG
12/27/2012



Photo 40.JPG
12/27/2012



Photo 41.JPG
12/27/2012



Photo 42.JPG
12/27/2012

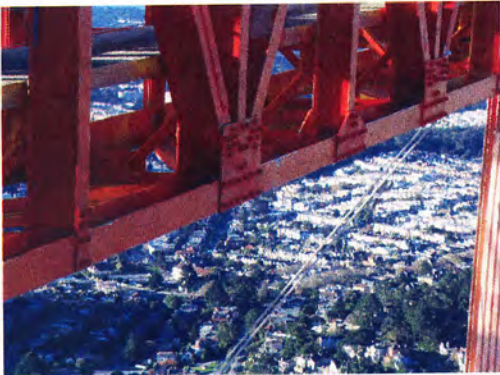


Photo 43.JPG
12/27/2012

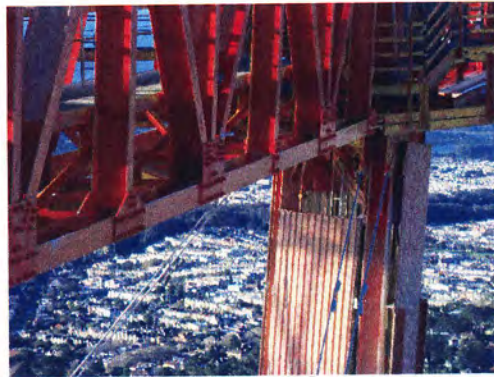


Photo 44.JPG
12/27/2012



Photo 45.JPG
12/27/2012



Photo 46.JPG
12/27/2012



Photo 47.JPG
12/27/2012



Photo 48.JPG
12/27/2012



Photo 49.JPG
12/27/2012



Photo 50.JPG
12/27/2012

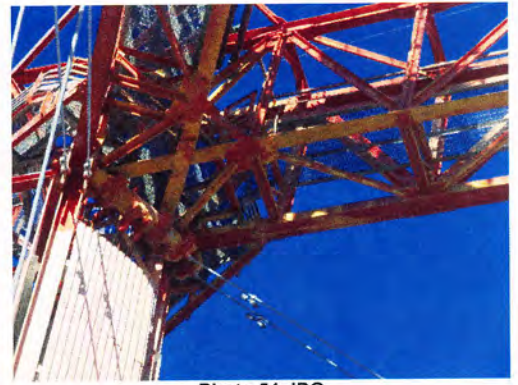


Photo 51.JPG
12/27/2012

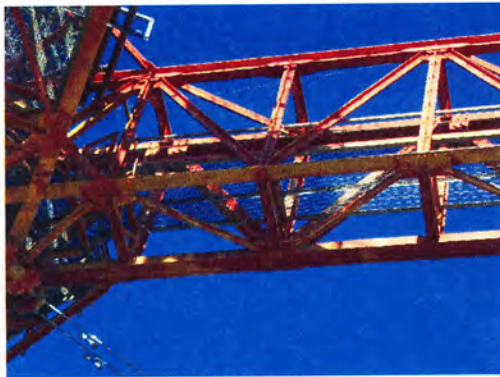


Photo 52.JPG
12/27/2012



Photo 53.JPG
12/27/2012

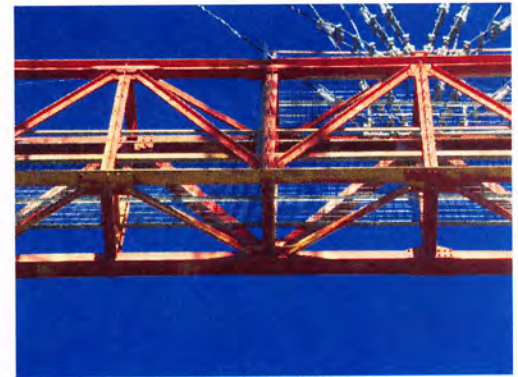


Photo 54.JPG
12/27/2012

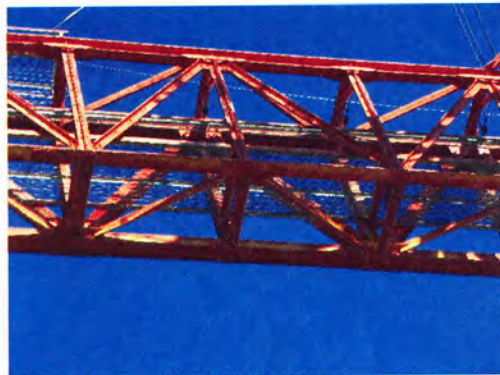


Photo 55.JPG
12/27/2012



Photo 56.JPG
12/27/2012



Photo 57.JPG
12/27/2012

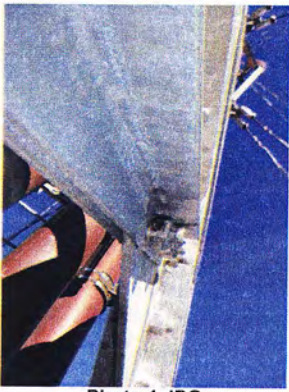


Photo 1.JPG
01/19/2013



Photo 2.JPG
01/19/2013



Photo 3.JPG
01/19/2013



Photo 4.JPG
01/19/2013



Photo 5.JPG
01/19/2013



Photo 6.JPG
01/19/2013