

# FIELD INSPECTION REPORT

## SE STACK B, SE LEG B & EAST TRUSS LEVELS 2-6

### MARCH 8, 2019

ERI PROJECT 36434/A  
977 FT SELF-SUPPORT TOWER  
SAN FRANCISCO, CA  
ASRN 1001289

Prepared For:

Eric Dausman  
Vice President & COO  
Sutro Tower, Inc.  
1 La Avanzada Street  
San Francisco, CA 94131  
T) 415.681.8851  
E) ericd@sutrotower.com

Prepared By:

James M. Ruedlinger, P.E.  
Senior VP Engineering  
Electronics Research, Inc.  
7777 Gardner Road  
Chandler, IN 47610  
T) 812.925.6000 ext.282  
E) jruedlinger@eriinc.com



# TABLE OF CONTENTS

EXECUTIVE SUMMARY ..... 3

## APPENDICES

STRUCTURE ORIENTATION/NOMENCLATURE ..... I  
INSPECTION SUMMARY & PICTURES ..... II

## **EXECUTIVE SUMMARY**

Mr. Dausman,

This report is submitted by Electronics Research Incorporated (ERI) with regards to the field inspection conducted by ERI on Aug 20-23 & Dec 17-19, 2018. The contracted scope of work included on-site inspections of the SE Stack “B”, SE Leg “B”, and East Truss Levels 2-6. The subject inspections were completed in accordance with the current ANSI/TIA-222-G standard.

The purpose of the work was to complete thorough visual inspections to evaluate current condition of the structural components.

In general, all structural elements were found in good condition.

Appendix II in this report includes the completed inspection forms, detailed inspection findings and recommended correction action summaries, and corresponding pictures to support all pertinent observations made.

## **OCCUPATIONAL SAFETY RELATED OBERVATIONS**

All safety related observations noted pertain strictly to occupational issues for individuals climbing and accessing the structure and do not pose any direct safety concerns to the general public. In general, the occupational safety related issues identified do not appear to pose immediate danger to the highly experienced Sutro Tower Maintenance Staff; however, all safety related observations should be carefully reviewed and action plans established for remediation.

The following page provides a summary of the safety observations noted (see “Inspection Summary” in Appendix II of this report for further details and associated pictures):

Occupational Safety Related Observations \* Sutro Tower \* ERI Project 36434/A \* Inspected Aug 20-23 & Dec 17-19, 2018

**SE STACK 'B' (NOTE: PERFORMED ONLY BASIC SAFETY INSPECTION AS STACK IS SCHEDULED TO BE REPLACED IN 2019)**

OBSERV. NO.	Location/Identification			Photo No.	<sup>2</sup> OBSERVATION COMMENTS	RECOMMENDED CORRECTIVE ACTION (CA)
	Column	Elevation	<sup>1</sup> Item			
1	N/A	6.22	O	1	Missing step bolt at base of climbing pole	Replace missing step bolt

NOTES: <sup>1</sup>Item Designation: L=Leg Member | D=Diagonal | H=Horizontal | C=Connection | O=Other

<sup>2</sup>Observation Abbreviations: MRB=Mild Rust on Bolts

**EAST TRUSS (LEVEL 6)**

OBSERV. NO.	Location/Identification			Photo No.	<sup>3</sup> OBSERVATION COMMENTS	RECOMMENDED CORRECTIVE ACTION (CA)
	<sup>1</sup> Chord	Horiz. Location	<sup>2</sup> Item			
360	'C' LEG	'C' LEG	O	360	Safety gate does not properly latch closed	Adjust gate to ensure proper closure
363	---	6.18-6.19	O	363	Railing post out of out alignment with adjacent railing	Shim post at toe board attachment to re-align
365	---	6.9-6.10	O	365	Railing post out of out alignment with adjacent railing	Shim post at toe board attachment to re-align
367	'B' LEG	'B' LEG	O	367	Safety gate does not properly latch closed, and signage rotated upside down	Adjust gate to ensure proper closure, and rotate signage
371	---	6.23	O	371	Cut out opening in walkway flooring	Repair flooring with patch, or replace grating piece
372	---	6.23	O	372	Top safety cable bracket cocked to side due to interference with the horiz lifeline	Recommend installing shorter top safety bracket, or consider removing this short safety cable run and require use of standard PPE y-lanyards in place of safety sleeve to maintain 100% tie-off when using ladder
373	---	6.26	O	373	Safety cable loose	Adjust and re-tension safety cable, or consider removing this short safety cable run and require use of standard PPE y-lanyards in place of safety sleeve to maintain 100% tie-off when using ladder
374	---	6.13	O	374	Safety cable loose	Adjust and re-tension safety cable, or consider removing this short safety cable run and require use of standard PPE y-lanyards in place of safety sleeve to maintain 100% tie-off when using ladder

**EAST TRUSS (LEVEL 4)**

OBSERV. NO.	Location/Identification			Photo No.	<sup>3</sup> OBSERVATION COMMENTS	RECOMMENDED CORRECTIVE ACTION (CA)
	<sup>1</sup> Chord	Horiz. Location	<sup>2</sup> Item			
448	L	4.4	C	448	Moderate Rust; Safety cable top bracket v-bolts	Replace v-bolts

**EAST TRUSS (LEVEL 3)**

455	U	3.5	C	455	Moderate Rust; Safety cable bottom bracket v-bolts	Replace v-bolts
-----	---	-----	---	-----	--	-----------------

**EAST TRUSS (LEVEL 2)**

477	U	2.9	O	477	Moderate/Severe Rust; Support pole step bolts	Replace steps bolts, or eliminate to prevent usage
-----	---	-----	---	-----	---	--

NOTES: <sup>1</sup>Chord Designation: U=Upper | M=Mid | L=Lower

<sup>2</sup>Item Designation: L=Leg Member | D=Diagonal | H=Horizontal | C=Connection | O=Other

<sup>3</sup>Observation Abbreviations: MRB=Mild Rust on Bolts

## **STRUCTURAL DAMAGE OBERVATIONS**

In general, the structural damage identified does not appear to pose immediate concerns to the overall structure's strength and stability; however, all structural damage observations noted should be further evaluated by Simpson Gumpertz & Heger Inc. serving as the structure's engineer of record (EOR) to determine if corrective action measures are warranted.

The following page provides a summary of the structural damage observations noted (see "Inspection Summary" in Appendix II of this report for further details and associated pictures):

Inspection Items Requiring EOR Review \* Sutro Tower \* ERI Project 36434/A \* Inspected Aug 20-23 & Dec 17-19, 2018

SOUTHEAST LEG 'B'						
OBSERV. NO.	Location/Identification			Photo No.	<sup>2</sup> OBSERVATION COMMENTS	RECOMMENDED CORRECTIVE ACTION (CA)
	Column	Elevation	<sup>1</sup> Item			
124	Z-Face	2.38-3.0	C	124	Minor Yielding; Diag - less than 1/2" out over length	Contact EOR to determine if any CA is warranted
297	X-Face	1.5-1.6	C	297	Yielded Member; Diag out 5/8" over 9" span	Contact EOR to determine if any CA is warranted

NOTES: <sup>1</sup>Item Designation: L=Leg Member | D=Diagonal | H=Horizontal | C=Connection | O=Other

<sup>2</sup>Observation Abbreviations: MRB=Mild Rust on Bolts

EAST TRUSS (LEVEL 6)						
OBSERV. NO.	Location/Identification			Photo No.	<sup>3</sup> OBSERVATION COMMENTS	RECOMMENDED CORRECTIVE ACTION (CA)
	<sup>1</sup> Chord	Horiz. Location	<sup>2</sup> Item			
359	IL	6.17-6.18	Chord	359	Minor Yielding; Chord web ~ Web out 1/2" over 18" span	Contact EOR to determine if any CA is warranted
366	IL	6.14-6.15	Chord	366	Minor Yielding; Chord web ~ Web out 1/4" over 12" span	Contact EOR to determine if any CA is warranted
375	I	6.15	Vertical	375	Minor Yielding; Vertical ~ out 9/16" over entire length	Contact EOR to determine if any CA is warranted
376	I	6.23	Vertical	376	Minor Yielding; Vertical ~ out 1/4" over 6"	Contact EOR to determine if any CA is warranted

NOTES: <sup>1</sup>Chord Designation: OU=Outer Upper | OL=Outer Lower | IU=Inner Upper | IL=Inner Lower

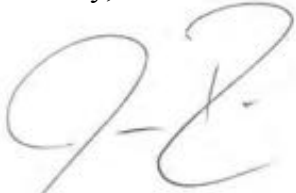
<sup>2</sup>Item Designation: L=Leg Member | D=Diagonal | H=Horizontal | C=Connection | O=Other

<sup>3</sup>Observation Abbreviations: MRB=Mild Rust on Bolts

**SUMMARY**

Please contact me if you should have any questions or require any additional details.

Sincerely,

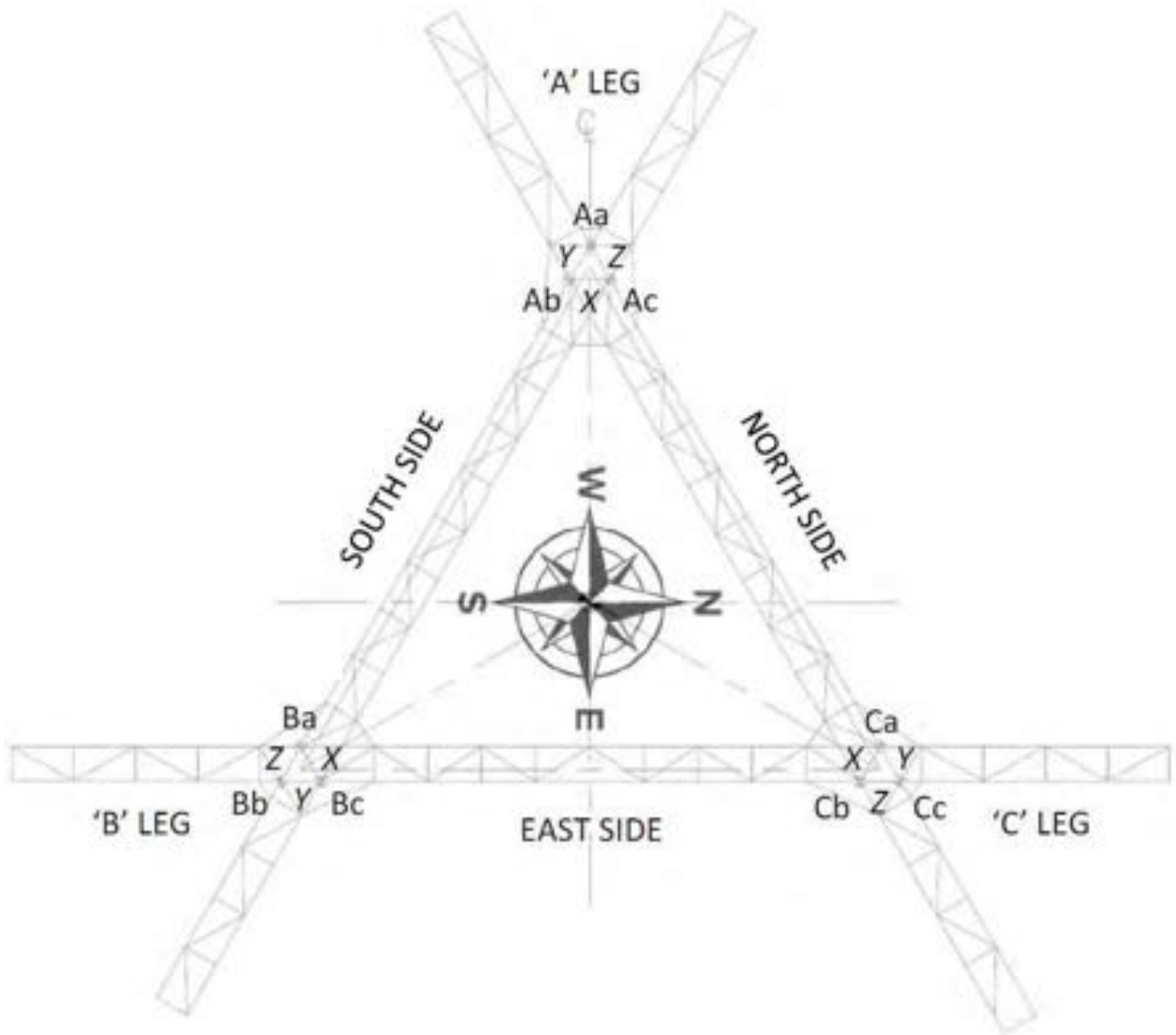
A handwritten signature in grey ink, appearing to read 'J-M Ruedlinger', is positioned above the typed name.

James M. Ruedlinger, P.E.  
Senior VP Engineering

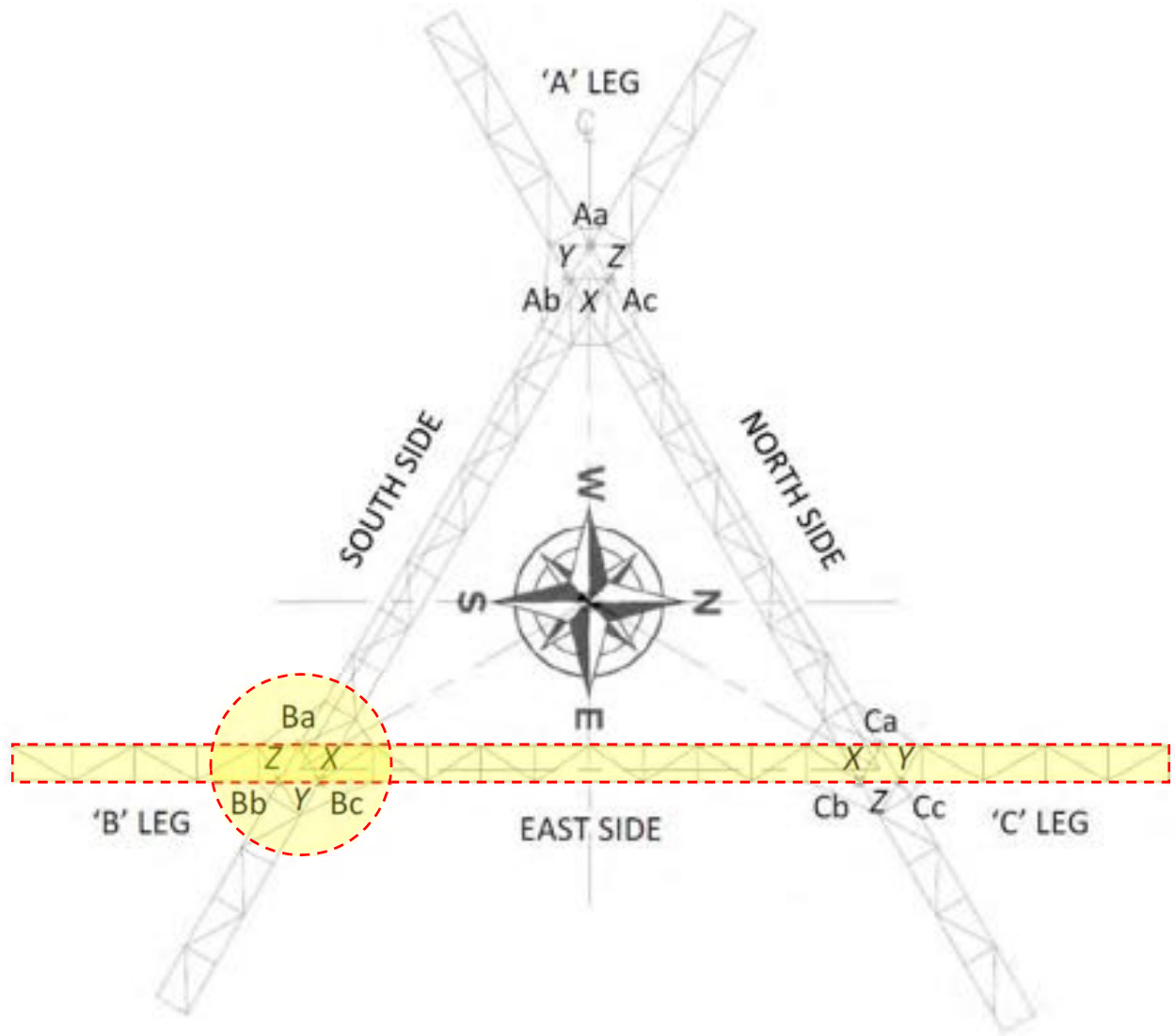
APPENDIX I:  
STRUCTURE ORIENTATION/NOMENCLATURE  
977 FT SELF-SUPPORT TOWER  
SAN FRANCISCO, CA  
ASRN 1001289



**Figure 1.** Structure Orientation & Nomenclature



**Figure 2.** Portion of Structure Covered in this Report



**Figure 3.** Stack 'B' Details

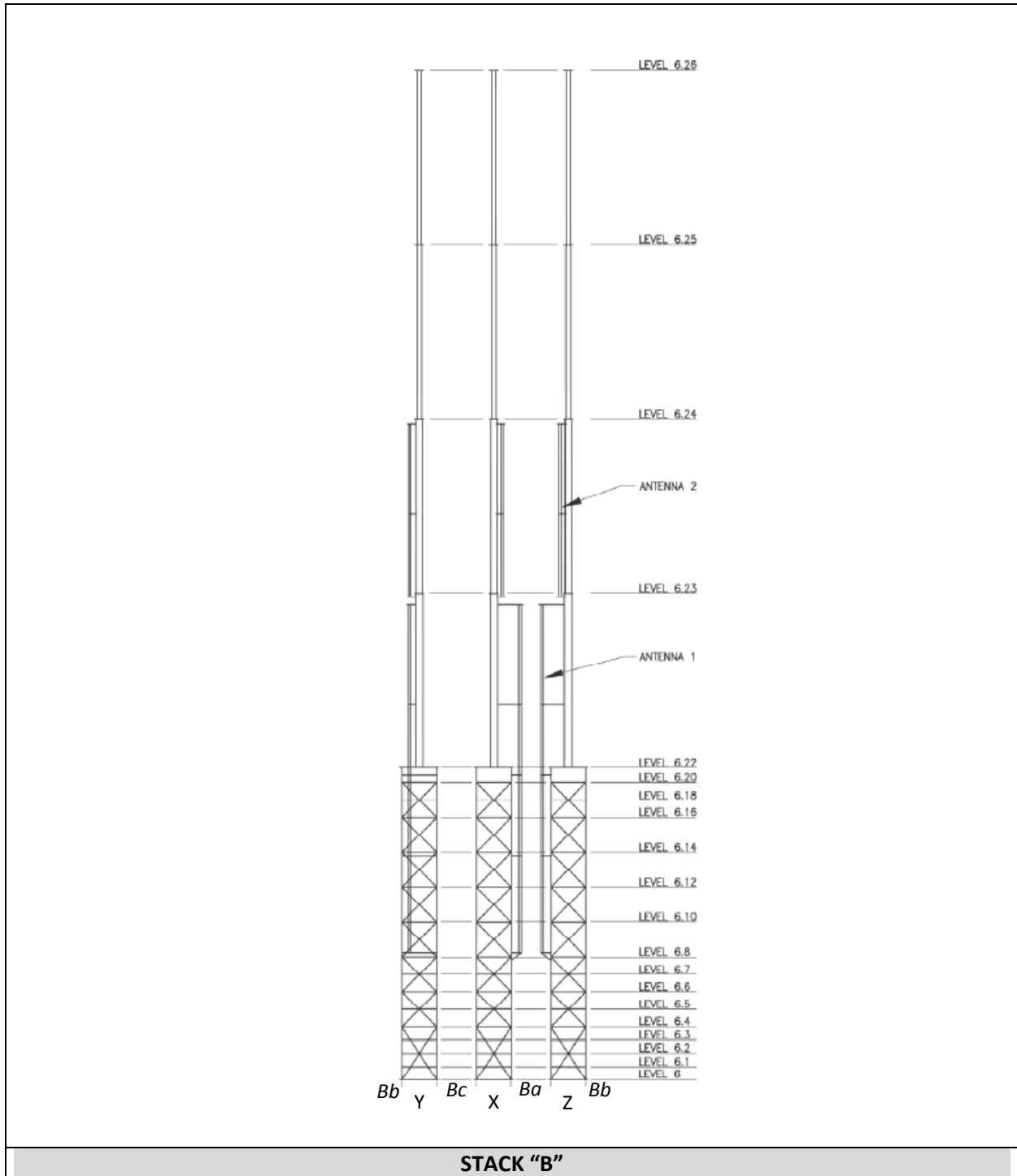
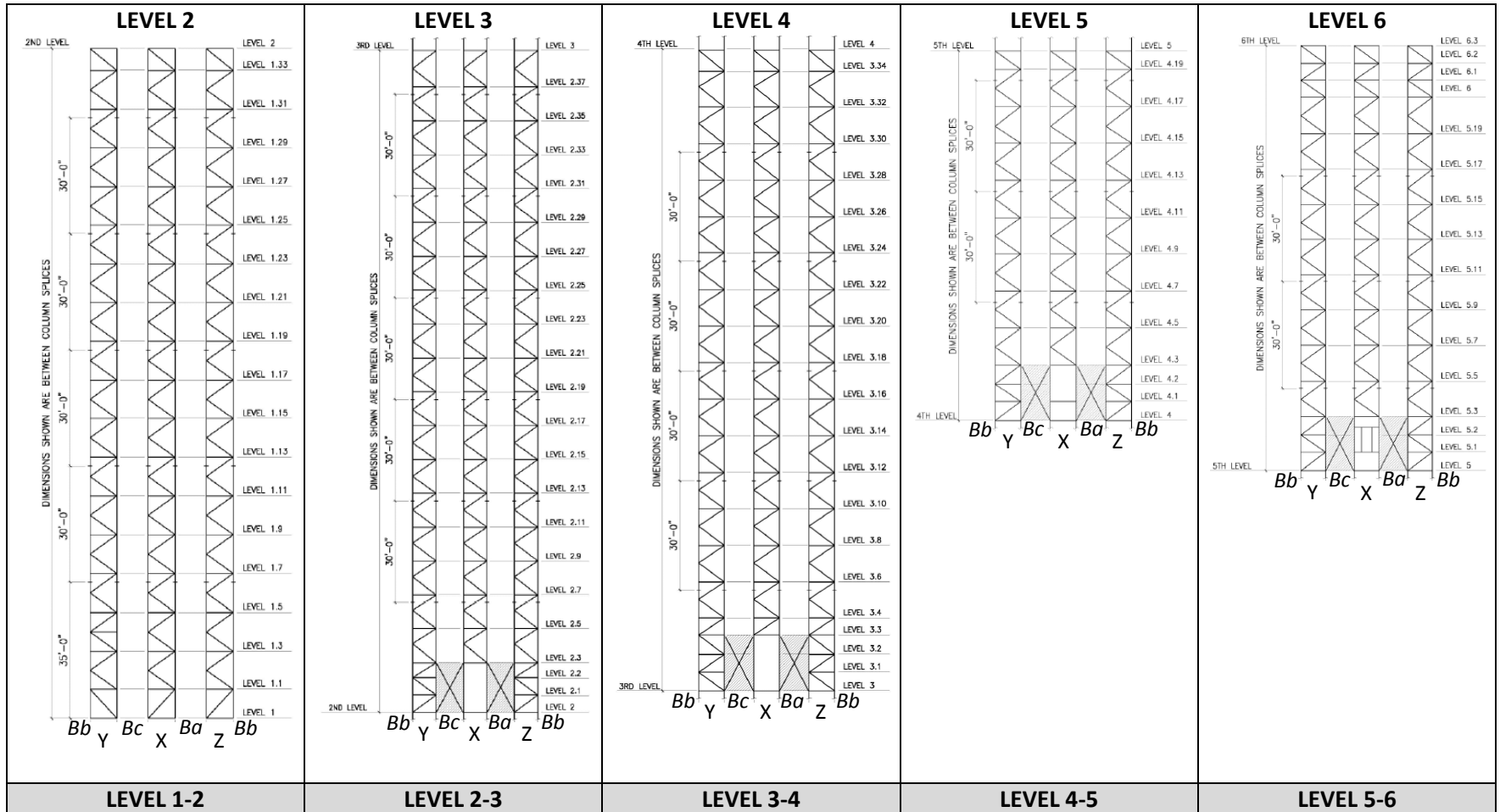
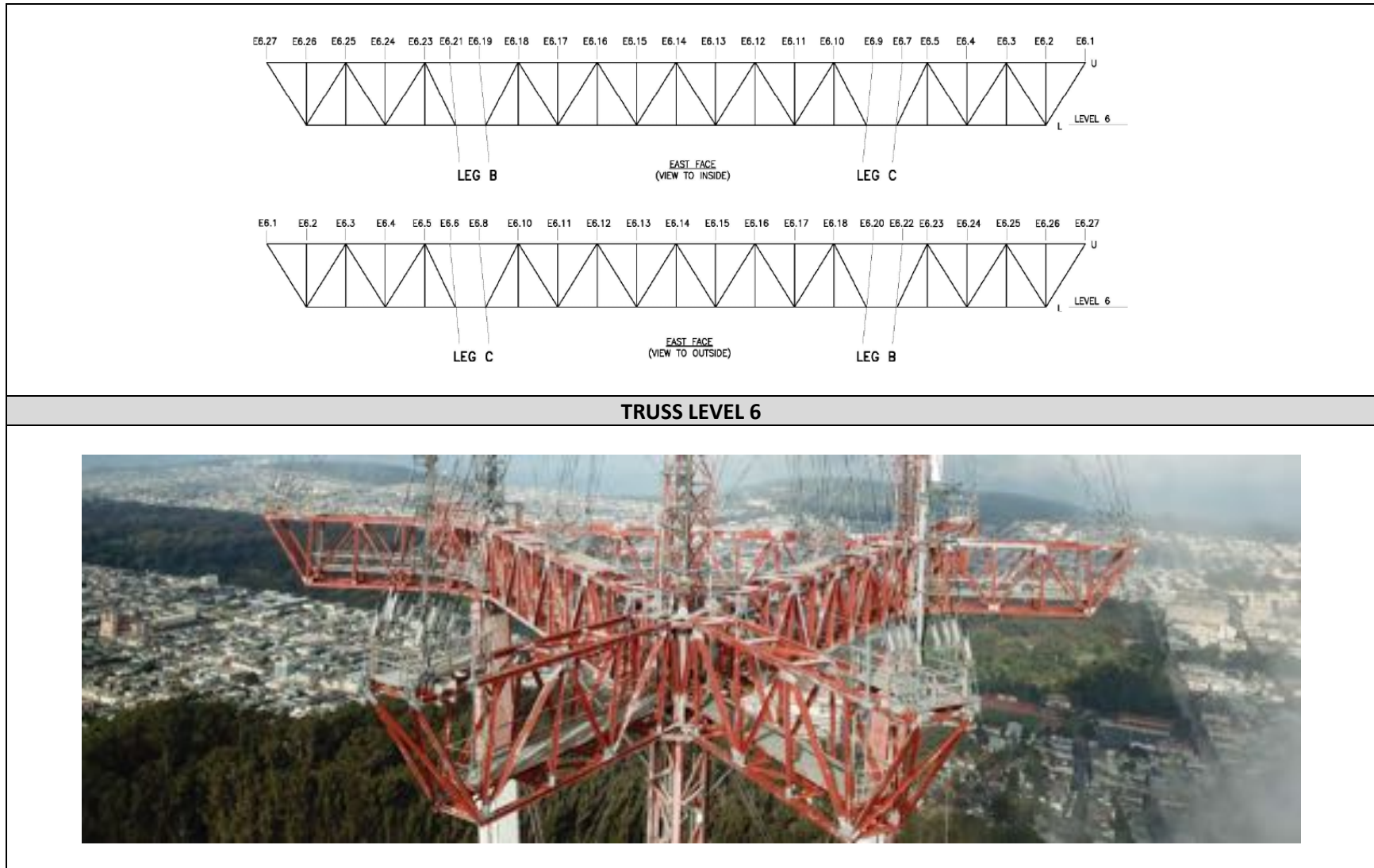


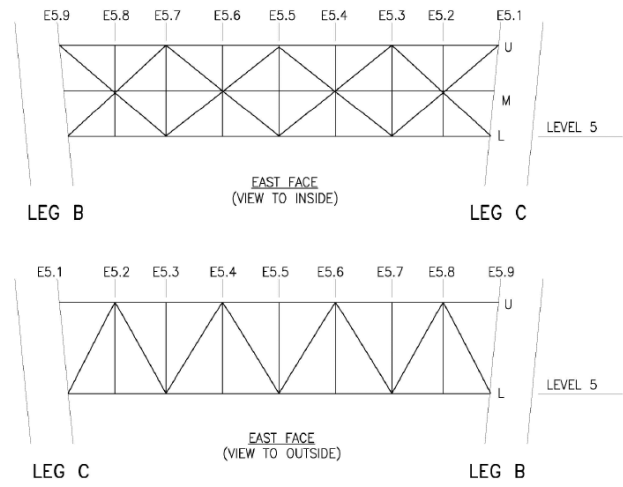
Figure 4. Leg 'B' Details



**Figure 5.** East Face Truss Level 6 Details



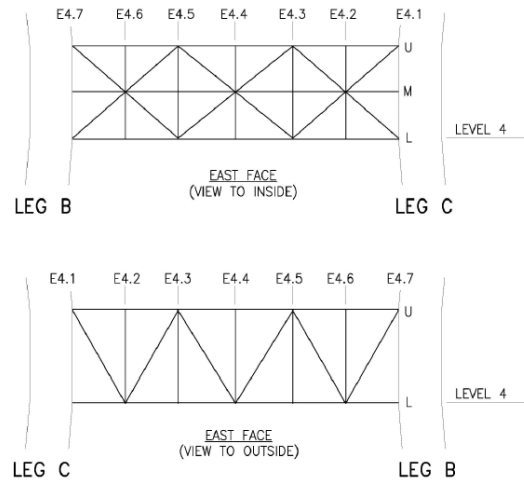
**Figure 6.** East Face Truss Level 5 Details



**TRUSS LEVEL 5**



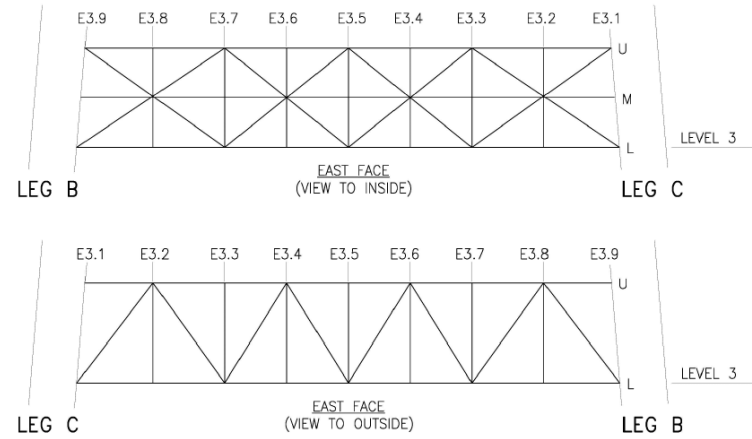
**Figure 7.** East Face Truss Level 4 Details



**TRUSS LEVEL 4**



**Figure 8.** East Face Truss Level 3 Details

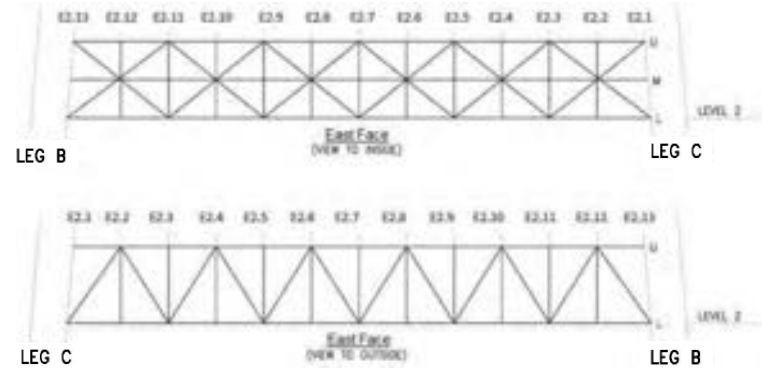


**TRUSS LEVEL 3**





**Figure 9.** East Face Truss Level 2 Details



**TRUSS LEVEL 2**



APPENDIX II:  
INSPECTION SUMMARY & PICTURES  
977 FT SELF-SUPPORT TOWER  
SAN FRANCISCO, CA  
ASRN 1001289

Inspection Summary \* Sutro Tower \* ERI Project 36434/A \* Inspected Aug 20-23 & Dec 17-19, 2018

	;Denotes Occupational Safety Related Observation
	;Denotes Structural Damage Observation Requiring EOR Review
	;Denotes Missing or Damaged Hardware/Components Which Need To Be Installed, Repaired, or Replaced
	;Denotes Minor Rust Observation Where No Significant Material Loss Noted
	;Denotes General Maintenance Observations

<b>SE STACK 'B' (NOTE: PERFORMED ONLY BASIC SAFETY INSPECTION AS STACK IS SCHEDULED TO BE REPLACED IN 2019)</b>						
OBSERV. NO.	Location/Identification			Photo No.	<sup>2</sup> OBSERVATION COMMENTS	RECOMMENDED CORRECTIVE ACTION (CA)
	Column	Elevation	<sup>1</sup> Item			
1	N/A	6.22	O	1	Missing step bolt at base of climbing pole	Replace missing step bolt
2	N/A	6.22-6.24	O	2	MRB (typ.); Climbing pole step bolts	No CA is warranted as the climbing pole will be removed in 2019 with Stack 'B'

NOTES: <sup>1</sup>Item Designation: L=Leg Member | D=Diagonal | H=Horizontal | C=Connection | O=Other  
<sup>2</sup>Observation Abbreviations: MRB=Mild Rust on Bolts

<b>SE STACK 'B' GUYING SYSTEM (NOTE: PERFORMED ONLY BASIC SAFETY INSPECTION AS STACK IS SCHEDULED TO BE REPLACED IN 2019)</b>						
OBSERV. NO.	Location/Identification			Photo No.	<sup>2</sup> OBSERVATION COMMENTS	RECOMMENDED CORRECTIVE ACTION (CA)
	Column	Elevation	<sup>1</sup> Item			
---	---	---	---	---	---	---

NOTES: <sup>1</sup>Item Designation: L=Leg Member | D=Diagonal | H=Horizontal | C=Connection | O=Other  
<sup>2</sup>Observation Abbreviations: MRB=Mild Rust on Bolts

Inspection Summary \* Sutro Tower \* ERI Project 36434/A \* Inspected Aug 20-23 & Dec 17-19, 2018

	:Denotes Occupational Safety Related Observation
	:Denotes Structural Damage Observation Requiring EOR Review
	:Denotes Missing or Damaged Hardware/Components Which Need To Be Installed, Repaired, or Replaced
	:Denotes Minor Rust Observation Where No Significant Material Loss Noted
	:Denotes General Maintenance Observations

SOUTHEAST LEG 'B'						
OBSERV. NO.	Location/Identification			Photo No.	<sup>2</sup> OBSERVATION COMMENTS	RECOMMENDED CORRECTIVE ACTION (CA)
	Column	Elevation	<sup>1</sup> Item			
3	Ba	6.3	C	3	MRB (x6); Column bolts	Surface prepare and treat, or replace
4	Bc	6.3	C	4	MRB (x1); Column bolts	Surface prepare and treat, or replace
5	Bb	6.1	C	5	MRB (x3); Column bolts	Surface prepare and treat, or replace
6	N/A	6.0-6.1	O	6	MRB (x5); Top safety climb attachment hardware	Surface prepare and treat, or replace
7	Bb	6.0	C	7	MRB (x2); Horiz bolts	Surface prepare and treat, or replace
8	Ba	6.0	C	8	MRB (x3); Horiz bolts	Surface prepare and treat, or replace
9	Z-Face	6.0-6.1	C	9	MRB (x3); Diag bolts	Surface prepare and treat, or replace
10	Bb	6.0	C	10	Minor Rust; Gusset plates	Surface prepare and treat
11	Bb	5.20-6.0	C	11	MRB (x15); Rein plate bolts	Surface prepare and treat, or replace
12	Z-Face	5.17	C	12	MRB (x2); Horiz bolts	Surface prepare and treat, or replace
13	Z-Face	5.17	C	13	MRB (x1); Cladding support bolts	Surface prepare and treat, or replace
14	X-Face	5.13	C	14	MRB (x1); Cladding support bolts	Surface prepare and treat, or replace
15	Bb	5.10	C	15	MRB (x4); Column bolts	Surface prepare and treat, or replace
16	Bb	5.8	D	16	Minor Rust	Surface prepare and treat
17	Bb	5.7	C	17	MRB (x9); Rein plate bolts	Surface prepare and treat, or replace
18	Bc	5.7	C	18	Minor Rust; Gusset plates	Surface prepare and treat
19	Bb	5.6	C	19	MRB (x13); Rein plate bolts	Surface prepare and treat, or replace
20	Bb	5.5	C	20	MRB (x6); Rein plate bolts	Surface prepare and treat, or replace
21	Bb	5.4-5.5	C	21	MRB (x11); Column splice bolts	Surface prepare and treat, or replace
22	Ba	5.4-5.5	C	22	MRB (x4); Column splice bolts	Surface prepare and treat, or replace
23	Ba	5.3-5.4	C	23	Loose bolt in column	Tighten or replace bolt
24	Ba	5.3	C	24	MRB (x6); Column bolts	Surface prepare and treat, or replace
25	Ba	5.3	C	25	MRB (x2); Column bolts	Surface prepare and treat, or replace
26	Ba	5.2	C	26	MRB (x8); Rein plate bolts	Surface prepare and treat, or replace
27	X-Face	5.1	C	27	MRB (x1); Horiz bolts	Surface prepare and treat, or replace
28	Bc	5.1	C	28	Minor Rust; Gusset plates	Surface prepare and treat
29	Ba	5.1	C	29	MRB (x9); Rein plate bolts	Surface prepare and treat, or replace
30	Y-Face	5.0	C	30	MRB (x2); Cladding support bolts	Surface prepare and treat, or replace
31	Bc	5.0	C	31	MRB (x2); Column bolts	Surface prepare and treat, or replace
32	Y-Face	5.0	C	32	MRB (x1); Horiz bolts & Minor Rust; Gusset plates (Bc)	Surface prepare and treat, or replace
33	Ba	5.0	C	33	MRB (x5); Column bolts	Surface prepare and treat, or replace
34	Bb	5.0	C	34	MRB (x1) & Loose bolt; Column bolts	Surface prepare, treat, and tighten; or replace bolt
35	Bb	4.19	C	35	MRB (x6); Rein plate bolts	Surface prepare and treat, or replace
36	Ba	4.19	C	36	MRB (x4); Column bolts	Surface prepare and treat, or replace
37	Bb	4.18-4.19	C	37	MRB (x2); Column splice bolts	Surface prepare and treat, or replace
38	Bb	4.18	C	38	MRB (x6); Rein plate bolts	Surface prepare and treat, or replace
39	Bb	4.17	C	39	MRB (x6); Rein plate bolts	Surface prepare and treat, or replace
40	Bb	4.16	C	40	MRB (x8); Rein plate bolts	Surface prepare and treat, or replace
41	Bb	4.15	C	41	MRB (x5); Rein plate bolts	Surface prepare and treat, or replace
42	Z-Face	4.15	C	42	MRB (x2); Cladding support bolts	Surface prepare and treat, or replace
43	Bb	4.14	C	43	MRB (x1); Rein plate bolts	Surface prepare and treat, or replace
44	X-Face	4.13	C	44	MRB (x2); Cladding support bolts	Surface prepare and treat, or replace

Inspection Summary \* Sutro Tower \* ERI Project 36434/A \* Inspected Aug 20-23 & Dec 17-19, 2018

	;Denotes Occupational Safety Related Observation
	;Denotes Structural Damage Observation Requiring EOR Review
	;Denotes Missing or Damaged Hardware/Components Which Need To Be Installed, Repaired, or Replaced
	;Denotes Minor Rust Observation Where No Significant Material Loss Noted
	;Denotes General Maintenance Observations

SOUTHEAST LEG 'B'						
45	Y-Face	4.13	C	45	MRB (x1); Cladding support bolts	Surface prepare and treat, or replace
46	X-Face	4.13	C	46	MRB (x1); Cladding support bolts	Surface prepare and treat, or replace
47	Bb	4.13	C	47	MRB (x4); Rein plate bolts	Surface prepare and treat, or replace
48	Ba	4.12-4.13	C	48	MRB (x7); Column splice bolts	Surface prepare and treat, or replace
49	Bb	4.12-4.13	C	49	MRB (x1); Column splice bolts	Surface prepare and treat, or replace
50	Z-Face	4.9	C	50	MRB (x2); Horiz bolts	Surface prepare and treat, or replace
51	Z-Face	4.9	C	51	MRB (x1); Horiz bolts	Surface prepare and treat, or replace
52	Z-Face	4.8	C	52	MRB (x2); Diag bolts	Surface prepare and treat, or replace
53	Z-Face	4.7	C	53	MRB (x2); Cladding support bolts	Surface prepare and treat, or replace
54	Y-Face	4.7	C	54	MRB (x3); Cladding support bolts	Surface prepare and treat, or replace
55	X-Face	4.7	C	55	MRB (x1); Horiz bolts	Surface prepare and treat, or replace
56	Bb	4.6-4.7	C	56	MRB (x6); Column splice bolts	Surface prepare and treat, or replace
57	Ba	4.6-4.7	C	57	MRB (x6); Column splice bolts	Surface prepare and treat, or replace
58	Z-Face	4.5	C	58	MRB (x1); Cladding support bolts	Surface prepare and treat, or replace
59	Z-Face	4.5	C	59	MRB (x1); Cladding support bolts	Surface prepare and treat, or replace
60	X-Face	4.5	C	60	MRB (x1); Cladding support bolts	Surface prepare and treat, or replace
61	Y-Face	4.5	C	61	MRB (x1); Diag bolts	Surface prepare and treat, or replace
62	Ba	4.5	C	62	Minor Rust; Gusset plates	Surface prepare and treat
63	Z-Face	4.3	C	63	MRB (x2); Cladding support bolts	Surface prepare and treat, or replace
64	Z-Face	4.3	C	64	MRB (x1); Horiz bolts	Surface prepare and treat, or replace
65	X-Face	4.3	C	65	MRB (x1); Horiz bolts	Surface prepare and treat, or replace
66	Bc	4.3	C	66	MRB (x1); Column bolts	Surface prepare and treat, or replace
67	X-Face	3.34	C	67	MRB (x1); Horiz bolts	Surface prepare and treat, or replace
68	Ba	3.29-3.30	C	68	MRB (x7); Column splice bolts	Surface prepare and treat, or replace
69	Bb	3.29-3.30	C	69	MRB (x3); Column splice bolts	Surface prepare and treat, or replace
70	Bc	3.29-3.30	C	70	MRB (x1); Column splice bolts	Surface prepare and treat, or replace
71	Bc	3.28	C	71	Minor Rust; Gusset plates	Surface prepare and treat
72	Y-Face	3.26	C	72	MRB (x1); Cladding support bolts	Surface prepare and treat, or replace
73	X-Face	3.26	C	73	MRB (x1); Cladding support bolts	Surface prepare and treat, or replace
74	Bc	3.24-3.25	C	74	Minor Rust; Field-drilled holes in vertical (x2)	Surface prepare and treat
75	X-Face	3.24	C	75	MRB (x1); Horiz bolts	Surface prepare and treat, or replace
76	Ba	3.23-3.24	C	76	MRB (x6); Column splice bolts	Surface prepare and treat, or replace
77	Bb	3.23-3.24	C	77	MRB (x3); Column splice bolts	Surface prepare and treat, or replace
78	X-Face	3.22	C	78	MRB (x1); Horiz bolts	Surface prepare and treat, or replace
79	X-Face	3.20	C	79	MRB (x2); Cladding support bolts	Surface prepare and treat, or replace
80	Y-Face	3.20	C	80	Minor Rust; Gusset plates	Surface prepare and treat
81	Z-Face	3.18	C	81	MRB (x2); Cladding support bolts	Surface prepare and treat, or replace
82	Ba	3.17-3.18	C	82	MRB (x12); Column splice bolts	Surface prepare and treat, or replace
83	Bb	3.17-3.18	C	83	MRB (x3); Column splice bolts	Surface prepare and treat, or replace
84	Z-Face	3.17	C	84	MRB (x1); Diag bolts	Surface prepare and treat, or replace
85	Z-Face	3.16	C	85	MRB (x2); Cladding support bolts	Surface prepare and treat, or replace
86	Z-Face	3.14	C	86	MRB (x1); Cladding support bolts	Surface prepare and treat, or replace
87	Z-Face	3.13	C	87	Minor Rust; Gusset plates	Surface prepare and treat
88	Z-Face	3.12	C	88	MRB (x1); Horiz bolts	Surface prepare and treat, or replace

Inspection Summary \* Sutro Tower \* ERI Project 36434/A \* Inspected Aug 20-23 & Dec 17-19, 2018

	;Denotes Occupational Safety Related Observation
	;Denotes Structural Damage Observation Requiring EOR Review
	;Denotes Missing or Damaged Hardware/Components Which Need To Be Installed, Repaired, or Replaced
	;Denotes Minor Rust Observation Where No Significant Material Loss Noted
	;Denotes General Maintenance Observations

SOUTHEAST LEG 'B'						
89	Ba	3.11-3.12	C	89	MRB (x5); Column splice bolts	Surface prepare and treat, or replace
90	Ba	3.11-3.12	C	90	MRB (x7); Column splice bolts ~ Opposite Side	Surface prepare and treat, or replace
91	Bb	3.10	O	91	Minor Rust; Lighting conduit junction	Surface prepare and treat, or replace
92	Bb	3.10	O	92	Lighting lens safety cable detached	Reattach lens safety cable
93	Bb	3.11-3.12	C	93	MRB (x4); Column splice bolts	Surface prepare and treat, or replace
94	Y-Face	3.11	C	94	MRB (x1); Diag bolts	Surface prepare and treat, or replace
95	X-Face	3.10	C	95	MRB (x1); Diag bolts	Surface prepare and treat, or replace
96	X-Face	3.10	C	96	Minor Rust; Gusset plates	Surface prepare and treat
97	Z-Face	3.10	C	97	Minor Rust; Gusset plates	Surface prepare and treat
98	Z-Face	3.9	C	98	Minor Rust; Gusset plates	Surface prepare and treat
99	Z-Face	3.9	C	99	MRB (x1); Diag bolts	Surface prepare and treat, or replace
100	Y-Face	3.8	C	100	MRB (x1); Diag bolts	Surface prepare and treat, or replace
101	Y-Face	3.7	C	101	Minor Rust; Gusset plates	Surface prepare and treat
102	Bc	3.6	C	102	Minor Rust; Gusset plates	Surface prepare and treat
103	Y-Face	3.6	C	103	MRB (x1); Diag bolts	Surface prepare and treat, or replace
104	Z-Face	3.6	C	104	Minor Rust; Gusset plates	Surface prepare and treat
105	Ba	3.5-3.6	C	105	MRB (x3); Column splice bolts	Surface prepare and treat, or replace
106	Ba	3.5-3.6	C	106	MRB (x14); Column splice bolts	Surface prepare and treat, or replace
107	Bb	3.5-3.6	C	107	MRB (x10); Column splice bolts	Surface prepare and treat, or replace
108	Bc	3.5-3.6	C	108	MRB (x1); Column splice bolts	Surface prepare and treat, or replace
109	Z-Face	3.5	C	109	MRB (x1); Diag bolts	Surface prepare and treat, or replace
110	Z-Face	3.5	C	110	Minor Rust; Gusset plates	Surface prepare and treat
111	Bc	3.3	C	111	MRB (x1); Vertical bolts	Surface prepare and treat, or replace
112	Y-Face	3.3	C	112	Minor Rust; Gusset plates	Surface prepare and treat
113	Z-Face	3.3	C	113	MRB (x1); Diag bolts	Surface prepare and treat, or replace
114	Bc Side	3.2	C	114	MRB (x1); Inner brace bolts	Surface prepare and treat, or replace
115	Z-Face	3.2	C	115	MRB (x1); Diag bolts	Surface prepare and treat, or replace
116	Y-Face	3.2	C	116	Minor Rust; Gusset plates	Surface prepare and treat
117	Z-Face	3.1	C	117	Minor Rust; Gusset plates	Surface prepare and treat
118	Z-Face	3.1	C	118	MRB (x1); Diag bolts	Surface prepare and treat, or replace
119	Z-Face	3.0	C	119	MRB (x1); Diag bolts	Surface prepare and treat, or replace
120	Ba	3.0	C	120	MRB (x1); Vertical bolts	Surface prepare and treat, or replace
121	Y-Face	3.0	C	121	MRB (x1); Horiz bolts	Surface prepare and treat, or replace
122	Bc	3.0	C	122	MRB (x2); Vertical bolts	Surface prepare and treat, or replace
123	X-Face	3.0	C	123	MRB (x1); Diag bolts	Surface prepare and treat, or replace
124	Z-Face	2.38-3.0	C	124	Minor Yielding; Diag - less than 1/2" out over length	Contact EOR to determine if any CA is warranted
125	Y-Face	2.37	C	125	Minor Rust; Gusset plates	Surface prepare and treat
126	Z-Face	2.37	C	126	MRB (x1); Cladding support bolts	Surface prepare and treat, or replace
127	Bb	2.36-2.37	C	127	MRB (x5); Column splice bolts	Surface prepare and treat, or replace
128	Z-Face	2.36	C	128	Minor Rust; Gusset plates	Surface prepare and treat
129	Z-Face	2.36	C	129	Minor Rust; Gusset plates	Surface prepare and treat
130	Z-Face	2.36	C	130	MRB (x2); Diag bolts	Surface prepare and treat, or replace
131	Z-Face	2.35	C	131	MRB (x1); Cladding support bolts	Surface prepare and treat, or replace
132	Z-Face	2.35	C	132	Minor Rust; Gusset plates	Surface prepare and treat
133	Y-Face	2.35	C	133	Minor Rust; Gusset plates	Surface prepare and treat

Inspection Summary \* Sutro Tower \* ERI Project 36434/A \* Inspected Aug 20-23 & Dec 17-19, 2018

	;Denotes Occupational Safety Related Observation
	;Denotes Structural Damage Observation Requiring EOR Review
	;Denotes Missing or Damaged Hardware/Components Which Need To Be Installed, Repaired, or Replaced
	;Denotes Minor Rust Observation Where No Significant Material Loss Noted
	;Denotes General Maintenance Observations

SOUTHEAST LEG 'B'						
134	X-Face	2.34	C	134	Minor Rust; Gusset plates	Surface prepare and treat
135	X-Face	2.33	C	135	MRB (x1); Diag bolts	Surface prepare and treat, or replace
136	Y-Face	2.34	C	136	Minor Rust; Gusset plates	Surface prepare and treat
137	Z-Face	2.31	C	137	MRB (x1); Cladding support bolts	Surface prepare and treat, or replace
138	Y-Face	2.31	C	138	Minor Rust; Gusset plates	Surface prepare and treat
139	Ba	2.30-2.31	C	139	MRB (x2); Column splice bolts	Surface prepare and treat, or replace
140	Bb	2.30-2.31	C	140	MRB (x3); Column splice bolts	Surface prepare and treat, or replace
141	X-Face	2.30	C	141	MRB (x2); Diag bolts	Surface prepare and treat, or replace
142	Y-Face	2.30	C	142	MRB (x1); Diag bolts	Surface prepare and treat, or replace
143	Z-Face	2.29	C	143	MRB (x1); Horiz bolts	Surface prepare and treat, or replace
144	Z-Face	2.27	C	144	Minor Rust; Gusset plates	Surface prepare and treat
145	Z-Face	2.26	C	145	MRB (x1); Diag bolts	Surface prepare and treat, or replace
146	Y-Face	2.25	C	146	MRB (x1); Cladding support bolts	Surface prepare and treat, or replace
147	Y-Face	2.25	C	147	MRB (x2); Horiz bolts	Surface prepare and treat, or replace
148	Ba	2.24-2.25	C	148	MRB (x7); Column splice bolts	Surface prepare and treat, or replace
149	Bc	2.24-2.25	C	149	MRB (x1); Column splice bolts	Surface prepare and treat, or replace
150	Y-Face	2.23	C	150	MRB (x1); Cladding support bolts	Surface prepare and treat, or replace
151	Z-Face	2.22	C	151	MRB (x1); Diag bolts	Surface prepare and treat, or replace
152	Z-Face	2.21	C	152	MRB (x1); Cladding support bolts	Surface prepare and treat, or replace
153	Bb	2.21	O	153	Minor Rust; Lighting conduit	Surface prepare and treat, or replace
154	X-Face	2.22	C	154	MRB (x1); Diag bolts	Surface prepare and treat, or replace
155	Z-Face	2.20	C	155	MRB (x2); Diag bolts	Surface prepare and treat, or replace
156	Z-Face	2.20	C	156	MRB (x2); Diag bolts	Surface prepare and treat, or replace
157	Y-Face	2.19	C	157	MRB (x1); Diag bolts	Surface prepare and treat, or replace
158	Ba	2.18-2.19	C	158	MRB (x9); Column splice bolts	Surface prepare and treat, or replace
159	Bb	2.18-2.19	C	159	MRB (x5); Column splice bolts	Surface prepare and treat, or replace
160	Bc	2.18-2.19	C	160	MRB (x4); Column splice bolts	Surface prepare and treat, or replace
161	Z-Face	2.18	C	161	MRB (x3); Diag bolts	Surface prepare and treat, or replace
162	Z-Face	2.17	C	162	MRB (x2); Cladding support bolts	Surface prepare and treat, or replace
163	Z-Face	2.17	C	163	MRB (x1); Cladding support bolts	Surface prepare and treat, or replace
164	Z-Face	2.17	C	164	MRB (x1); Diag bolts	Surface prepare and treat, or replace
165	Z-Face	2.17	C	165	Minor Rust; Gusset plates	Surface prepare and treat
166	Z-Face	2.17	C	166	MRB (x1); Diag bolts	Surface prepare and treat, or replace
167	X-Face	2.16	C	167	MRB (x1); Diag bolts	Surface prepare and treat, or replace
168	Z-Face	2.15	C	168	MRB (x1); Horiz bolts	Surface prepare and treat, or replace
169	Z-Face	2.15	C	169	MRB (x1); Cladding support bolts	Surface prepare and treat, or replace
170	Y-Face	2.15	C	170	MRB (x2); Cladding support bolts	Surface prepare and treat, or replace
171	Z-Face	2.13	C	171	Minor Rust; Gusset plates	Surface prepare and treat
172	Y-Face	2.13	C	172	Minor Rust; Gusset plates	Surface prepare and treat
173	Ba	2.12-2.13	C	173	MRB (x5); Column splice bolts	Surface prepare and treat, or replace
174	Bb	2.12-2.13	C	174	MRB (x3); Column splice bolts	Surface prepare and treat, or replace
175	Z-Face	2.12	C	175	Minor Rust; Gusset plates	Surface prepare and treat
176	Z-Face	2.11	C	176	Minor Rust; Gusset plates & I-beam web	Surface prepare and treat
177	Z-Face	2.11	C	177	MRB (x2); Cladding support bolts	Surface prepare and treat, or replace
178	Z-Face	2.11	C	178	MRB (x2); Cladding support bolts	Surface prepare and treat, or replace

Inspection Summary \* Sutro Tower \* ERI Project 36434/A \* Inspected Aug 20-23 & Dec 17-19, 2018

	;Denotes Occupational Safety Related Observation
	;Denotes Structural Damage Observation Requiring EOR Review
	;Denotes Missing or Damaged Hardware/Components Which Need To Be Installed, Repaired, or Replaced
	;Denotes Minor Rust Observation Where No Significant Material Loss Noted
	;Denotes General Maintenance Observations

SOUTHEAST LEG 'B'						
179	Z-Face	2.11	C	179	MRB (x1); Horiz bolts	Surface prepare and treat, or replace
180	X-Face	2.11	C	180	MRB (x2); Diag bolts	Surface prepare and treat, or replace
181	X-Face	2.11	C	181	Minor Rust; Welds at diag-to-gusset plates	Surface prepare and treat
182	Y-Face	2.11	C	182	MRB (x2); Diag bolts	Surface prepare and treat, or replace
183	Y-Face	2.11	C	183	Minor Rust; Gusset plates	Surface prepare and treat
184	Z-Face	2.10	C	184	Minor Rust; Gusset plates	Surface prepare and treat
185	Z-Face	2.9	C	185	Minor Rust; Gusset plates	Surface prepare and treat
186	Y-Face	2.9	C	186	Minor Rust; Gusset plates	Surface prepare and treat
187	Z-Face	2.9	C	187	MRB (x1); Cladding support bolts	Surface prepare and treat, or replace
188	Z-Face	2.8	C	188	MRB (x2); Diag bolts	Surface prepare and treat, or replace
189	Z-Face	2.8	C	189	Minor Rust; Gusset plates	Surface prepare and treat
190	X-Face	2.8	C	190	MRB (x1); Diag bolts	Surface prepare and treat, or replace
191	X-Face	2.7	C	191	Minor Rust; Gusset plates	Surface prepare and treat
192	Z-Face	2.6	C	192	MRB (x3); Diag bolts	Surface prepare and treat, or replace
193	X-Face	2.6	C	193	Minor Rust; Gusset plates	Surface prepare and treat
194	X-Face	2.5	C	194	Minor Rust; Gusset plates	Surface prepare and treat
195	Y-Face	2.5	C	195	Minor Rust; Gusset plates	Surface prepare and treat
196	X-Face	2.4	C	196	MRB (x1); Diag bolts	Surface prepare and treat, or replace
197	X-Face	2.4	C	197	MRB (x2); Diag bolts	Surface prepare and treat, or replace
198	Ba	2.3-2.4	C	198	MRB (x3); Column splice bolts	Surface prepare and treat, or replace
199	Y-Face	2.3	C	199	Minor Rust; Gusset plates	Surface prepare and treat
200	Z-Face	2.3	C	200	Minor Rust; Gusset plates	Surface prepare and treat
201	Z-Face	2.2	C	201	MRB (x1); Diag bolts	Surface prepare and treat, or replace
202	Z-Face	2.2	C	202	MRB (x2); Horiz bolts	Surface prepare and treat, or replace
203	Y-Face	2.2	C	203	MRB (x1); Cladding support bolts	Surface prepare and treat, or replace
204	Z-Face	2.2	C	204	Minor Rust; Gusset plates	Surface prepare and treat
205	Y-Face	2.1	C	205	MRB (x2); Horiz bolts	Surface prepare and treat, or replace
206	Ba	2.0	C	206	MRB (x1); Vertical bolts	Surface prepare and treat, or replace
207	Bc	2.0	C	207	MRB (x1); Vertical bolts	Surface prepare and treat, or replace
208	Ba	2.0	C	208	MRB (x1); Inner brace bolts	Surface prepare and treat, or replace
209	Ba	1.33	C	209	Minor Rust; Gusset plates	Surface prepare and treat
210	Z-Face	1.33	C	210	MRB (x1); Cladding support bolts	Surface prepare and treat, or replace
211	X-Face	1.33	C	211	MRB (x1); Diag bolts	Surface prepare and treat, or replace
212	Y-Face	1.33	C	212	MRB (x1); Cladding support bolts	Surface prepare and treat, or replace
213	X-Face	1.32	C	213	MRB (x1); Diag bolts	Surface prepare and treat, or replace
214	Z-Face	1.32	C	214	MRB (x2); Diag bolts	Surface prepare and treat, or replace
215	Z-Face	1.31	C	215	MRB (x2); Diag bolts	Surface prepare and treat, or replace
216	Bc	1.30-1.31	C	216	Minor Rust; Splice plate	Surface prepare and treat
217	Ba	1.30-1.31	C	217	MRB (x3); Column splice bolts	Surface prepare and treat, or replace
218	Bc	1.30-1.31	C	218	MRB (x2); Column splice bolts	Surface prepare and treat, or replace
219	Y-Face	1.31	C	219	MRB (x1); Diag bolts	Surface prepare and treat, or replace
220	Z-Face	1.29	C	220	MRB (x1); Diag bolts	Surface prepare and treat, or replace
221	X-Face	1.29	C	221	MRB (x1); Diag bolts	Surface prepare and treat, or replace
222	Y-Face	1.29	C	222	MRB (x2); Diag bolts	Surface prepare and treat, or replace
223	X-Face	1.28	C	223	MRB (x2); Diag bolts	Surface prepare and treat, or replace



Inspection Summary \* Sutro Tower \* ERI Project 36434/A \* Inspected Aug 20-23 & Dec 17-19, 2018

	;Denotes Occupational Safety Related Observation
	;Denotes Structural Damage Observation Requiring EOR Review
	;Denotes Missing or Damaged Hardware/Components Which Need To Be Installed, Repaired, or Replaced
	;Denotes Minor Rust Observation Where No Significant Material Loss Noted
	;Denotes General Maintenance Observations

SOUTHEAST LEG 'B'						
224	Z-Face	1.28	C	224	MRB (x1); Diag bolts	Surface prepare and treat, or replace
225	Z-Face	1.28	C	225	MRB (x1); Diag bolts	Surface prepare and treat, or replace
226	Z-Face	1.27	C	226	Minor Rust; Conduit	Surface prepare and treat, or replace
227	X-Face	1.27	C	227	MRB (x2); Diag bolts	Surface prepare and treat, or replace
228	X-Face	1.27	C	228	MRB (x2); Horiz bolts	Surface prepare and treat, or replace
229	Y-Face	1.27	C	229	Minor Rust; Gusset plates	Surface prepare and treat
230	X-Face	1.26	C	230	MRB (x1); Diag bolts	Surface prepare and treat, or replace
231	Y-Face	1.25	C	231	MRB (x2); Diag bolts	Surface prepare and treat, or replace
232	X-Face	1.25	C	232	MRB (x2); Diag bolts	Surface prepare and treat, or replace
233	X-Face	1.25	C	233	MRB (x1); Horiz bolts	Surface prepare and treat, or replace
234	Bc	1.24-1.25	C	234	MRB (x6); Column splice bolts	Surface prepare and treat, or replace
235	X-Face	1.24	C	235	MRB (x1); Diag bolts	Surface prepare and treat, or replace
236	Z-Face	1.24	C	236	Minor Rust; Gusset plates	Surface prepare and treat
237	Y-Face	1.24	C	237	Minor Rust; Gusset plates	Surface prepare and treat
238	Z-Face	1.23	C	238	MRB (x1); Cladding support bolts	Surface prepare and treat, or replace
239	Y-Face	1.23	C	239	MRB (x1); Diag bolts	Surface prepare and treat, or replace
240	Y-Face	1.23	C	240	MRB (x1); Cladding support bolts	Surface prepare and treat, or replace
241	X-Face	1.23-1.24	C	241	Minor Rust; Diag	Surface prepare and treat
242	X-Face	1.23	C	242	MRB (x1); Horiz bolts	Surface prepare and treat, or replace
243	X-Face	1.22-1.23	C	243	Minor Rust; Diag	Surface prepare and treat
244	X-Face	1.22	C	244	MRB (x2); Diag bolts	Surface prepare and treat, or replace
245	Z-Face	1.21	C	245	MRB (x1); Cladding support bolts	Surface prepare and treat, or replace
246	Z-Face	1.21	C	246	<b>Moderate to Severe Rust; Gusset plates</b>	Surface prepare and treat
247	Y-Face	1.22	C	247	Minor Rust; Gusset plates	Surface prepare and treat
248	X-Face	1.21	C	248	MRB (x1); Diag bolts	Surface prepare and treat, or replace
249	Z-Face	1.21	C	249	MRB (x1); Diag bolts	Surface prepare and treat, or replace
250	X-Face	1.20	C	250	MRB (x2); Diag bolts	Surface prepare and treat, or replace
251	Z-Face	1.20	C	251	Minor Rust; Gusset plates	Surface prepare and treat
252	Y-Face	1.20	C	252	Minor Rust; Gusset plates	Surface prepare and treat
253	Bb	1.19	C	253	Minor Rust; Vertical	Surface prepare and treat
254	X-Face	1.19	C	254	MRB (x1); Horiz bolts	Surface prepare and treat, or replace
255	Z-Face	1.19	C	255	Minor Rust; Gusset plates	Surface prepare and treat
256	Ba	1.18-1.19	C	256	MRB (x9); Column splice bolts	Surface prepare and treat, or replace
257	Bb	1.18-1.19	C	257	MRB (x7); Column splice bolts	Surface prepare and treat, or replace
258	Y-Face	1.18	C	258	MRB (x2); Diag bolts	Surface prepare and treat, or replace
259	Y-Face	1.17	C	259	MRB (x1); Cladding support bolts	Surface prepare and treat, or replace
260	Y-Face	1.19	C	260	Minor Rust; Gusset plates	Surface prepare and treat
261	Y-Face	1.18	C	261	Minor Rust; Gusset plates	Surface prepare and treat
262	Bc	1.18-1.19	C	262	Bolt Head Sheared Off	Remove sheared bolt and replace
263	X-Face	1.17	C	263	<b>Moderate to Severe Rust; Gusset plates</b>	Surface prepare and treat
264	Z-Face	1.17	C	264	MRB (x1); Diag bolts	Surface prepare and treat, or replace
265	X-Face	1.17	C	265	Minor Rust; Gusset plates	Surface prepare and treat
266	X-Face	1.16	C	266	MRB (x1); Diag bolts	Surface prepare and treat, or replace
267	Z-Face	1.15	C	267	MRB (x1); Horiz bolts	Surface prepare and treat, or replace
268	Bb	1.15	C	268	Minor Rust; Vertical	Surface prepare and treat

Inspection Summary \* Sutro Tower \* ERI Project 36434/A \* Inspected Aug 20-23 & Dec 17-19, 2018

	;Denotes Occupational Safety Related Observation
	;Denotes Structural Damage Observation Requiring EOR Review
	;Denotes Missing or Damaged Hardware/Components Which Need To Be Installed, Repaired, or Replaced
	;Denotes Minor Rust Observation Where No Significant Material Loss Noted
	;Denotes General Maintenance Observations

SOUTHEAST LEG 'B'						
269	Z-Face	1.15	C	269	Minor Rust; Gusset plates	Surface prepare and treat
270	X-Face	1.15	C	270	Minor Rust; Gusset plates	Surface prepare and treat
271	X-Face	1.14	C	271	MRB (x1); Diag bolts	Surface prepare and treat, or replace
272	X-Face	1.13	C	272	MRB (x2); Diag bolts	Surface prepare and treat, or replace
273	Z-Face	1.14	C	273	Minor Rust; Gusset plates	Surface prepare and treat
274	Z-Face	1.14	C	274	MRB (x1); Diag bolts	Surface prepare and treat, or replace
275	Z-Face	1.12	C	275	MRB (x2); Diag bolts	Surface prepare and treat, or replace
276	X-Face	1.12	C	276	MRB (x2); Diag bolts	Surface prepare and treat, or replace
277	X-Face	1.11	C	277	Minor Rust; Gusset plates	Surface prepare and treat
278	X-Face	1.11	C	278	MRB (x1); Horiz bolts	Surface prepare and treat, or replace
279	Y-Face	1.11	C	279	Minor Rust; Gusset plates	Surface prepare and treat
280	X-Face	1.10	C	280	MRB (x1); Diag bolts	Surface prepare and treat, or replace
281	Y-Face	1.10	C	281	MRB (x3); Diag bolts	Surface prepare and treat, or replace
282	Y-Face	1.10	C	282	Minor Rust; Gusset plates	Surface prepare and treat
283	Y-Face	1.9	C	283	MRB (x1); Diag bolts	Surface prepare and treat, or replace
284	Z-Face	1.10	C	284	MRB (x1); Diag bolts	Surface prepare and treat, or replace
285	Z-Face	1.10	C	285	Minor Rust; Gusset plates	Surface prepare and treat
286	X-Face	1.9	C	286	Minor Rust; Gusset plates	Surface prepare and treat
287	Y-Face	1.9	C	287	Minor Rust; Gusset plates	Surface prepare and treat
288	Y-Face	1.8	C	288	Minor Rust; Gusset plates	Surface prepare and treat
289	X-Face	1.8	C	289	Minor Rust; Gusset plates	Surface prepare and treat
290	Z-Face	1.8	C	290	MRB (x2); Diag bolts	Surface prepare and treat, or replace
291	X-Face	1.7	C	291	Minor Rust; Gusset plates	Surface prepare and treat
292	X-Face	1.7	C	292	MRB (x2); Horiz bolts	Surface prepare and treat, or replace
293	X-Face	1.7	C	293	MRB (x2); Horiz bolts	Surface prepare and treat, or replace
294	Bc	1.6-1.7	C	294	MRB (x6); Column splice bolts	Surface prepare and treat, or replace
295	Y-Face	1.6	C	295	Minor Rust; Gusset plates	Surface prepare and treat
296	Z-Face	1.6	C	296	MRB (x4); Diag bolts	Surface prepare and treat, or replace
297	X-Face	1.5-1.6	C	297	Yielded Member; Diag out 5/8" over 9" span	Contact EOR to determine if any CA is warranted
298	Bb	1.6-1.7	C	298	MRB (x6); Column splice bolts	Surface prepare and treat, or replace
299	Z-Face	1.5	C	299	Minor Rust; Gusset plates	Surface prepare and treat
300	X-Face	1.5	C	300	Minor Rust; Gusset plates	Surface prepare and treat
301	Y-Face	1.5	C	301	Minor Rust; Gusset plates	Surface prepare and treat
302	Y-Face	1.5	C	302	MRB (x1); Diag bolts	Surface prepare and treat, or replace
303	Y-Face	1.4	C	303	MRB (x2); Diag bolts	Surface prepare and treat, or replace
304	Z-Face	1.5	C	304	MRB (x3); Diag bolts	Surface prepare and treat, or replace
305	Y-Face	1.5	C	305	Minor Rust; Gusset plates	Surface prepare and treat
306	Z-Face	1.4	C	306	Minor Rust; Gusset plates	Surface prepare and treat
307	X-Face	1.4	C	307	MRB (x2); Horiz bolts	Surface prepare and treat, or replace
308	X-Face	1.4	C	308	MRB (x2); Horiz bolts	Surface prepare and treat, or replace
309	Z-Face	1.4	C	309	MRB (x4); Diag bolts	Surface prepare and treat, or replace
310	Y-Face	1.4	C	310	MRB (x2); Horiz bolts	Surface prepare and treat, or replace
311	Y-Face	1.4	C	311	MRB (x1); Horiz bolts	Surface prepare and treat, or replace
312	Z-Face	1.4	C	312	MRB (x2); Horiz bolts	Surface prepare and treat, or replace
313	Z-Face	1.4	C	313	MRB (x2); Horiz bolts	Surface prepare and treat, or replace

Inspection Summary \* Sutro Tower \* ERI Project 36434/A \* Inspected Aug 20-23 & Dec 17-19, 2018

	;Denotes Occupational Safety Related Observation
	;Denotes Structural Damage Observation Requiring EOR Review
	;Denotes Missing or Damaged Hardware/Components Which Need To Be Installed, Repaired, or Replaced
	;Denotes Minor Rust Observation Where No Significant Material Loss Noted
	;Denotes General Maintenance Observations

SOUTHEAST LEG 'B'						
314	Y-Face	1.4	C	314	MRB (x1); Diag bolts	Surface prepare and treat, or replace
315	Z-Face	1.4	C	315	MRB (x3); Diag bolts	Surface prepare and treat, or replace
316	Z-Face	1.4	C	316	Minor Rust; Gusset plates	Surface prepare and treat
317	Z-Face	1.3	C	317	MRB (x1); Diag bolts	Surface prepare and treat, or replace
318	Z-Face	1.3	C	318	MRB (x2); Horiz bolts	Surface prepare and treat, or replace
319	Y-Face	1.3	C	319	MRB (x1); Cladding support bolts	Surface prepare and treat, or replace
320	Y-Face	1.3	C	320	MRB (x1); Cladding support bolts	Surface prepare and treat, or replace
321	Z-Face	1.3	C	321	MRB (x2); Horiz bolts	Surface prepare and treat, or replace
322	Z-Face	1.3	C	322	MRB (x2); Cladding support bolts	Surface prepare and treat, or replace
323	Z-Face	1.3	C	323	MRB (x1); Horiz bolts	Surface prepare and treat, or replace
324	Z-Face	1.3	C	324	MRB (x2); Cladding support bolts	Surface prepare and treat, or replace
325	Z-Face	1.4	C	325	MRB (x2); Cladding support bolts	Surface prepare and treat, or replace
326	Z-Face	1.4	C	326	MRB (x2); Cladding support bolts	Surface prepare and treat, or replace
327	Z-Face	1.3	C	327	Minor Rust; Gusset plates	Surface prepare and treat
328	Y-Face	1.2	C	328	MRB (x2); Diag bolts	Surface prepare and treat, or replace
329	Y-Face	1.2	C	329	Minor Rust; Gusset plates	Surface prepare and treat
330	Z-Face	1.2	C	330	MRB (x2); Diag bolts	Surface prepare and treat, or replace
331	X-Face	1.2	C	331	MRB (x1); Diag bolts	Surface prepare and treat, or replace
332	Y-Face	1.1	C	332	MRB (x1); Diag bolts	Surface prepare and treat, or replace
333	Z-Face	1.1	C	333	MRB (x2); Diag bolts	Surface prepare and treat, or replace
334	Z-Face	1.1	C	334	Minor Rust; Gusset plates	Surface prepare and treat
335	Y-Face	1.1	C	335	MRB (x1); Horiz bolts	Surface prepare and treat, or replace
336	Z-Face	1.1	C	336	MRB (x1); Horiz bolts	Surface prepare and treat, or replace
337	Y-Face	1.1	C	337	MRB (x2); Horiz bolts	Surface prepare and treat, or replace
338	Y-Face	1.1	C	338	MRB (x1); Cladding support bolts	Surface prepare and treat, or replace
339	Y-Face	1.1	C	339	MRB (x2); Cladding support bolts	Surface prepare and treat, or replace
340	Z-Face	1.1	C	340	MRB (x2); Diag bolts	Surface prepare and treat, or replace
341	Y-Face	1.1	C	341	Minor Rust; Gusset plates	Surface prepare and treat
342	Z-Face	1.1	C	342	Minor Rust; Gusset plates	Surface prepare and treat
343	Ba	Ground	C	343	MRB (x1); Base anchor bolt	Surface prepare and treat

NOTES: <sup>1</sup>Item Designation: L=Leg Member | D=Diagonal | H=Horizontal | C=Connection | O=Other

<sup>2</sup>Observation Abbreviations: MRB=Mild Rust on Bolts

Inspection Summary \* Sutro Tower \* ERI Project 36434/A \* Inspected Aug 20-23 & Dec 17-19, 2018

	:Denotes Occupational Safety Related Observation
	:Denotes Structural Damage Observation Requiring EOR Review
	:Denotes Missing or Damaged Hardware/Components Which Need To Be Installed, Repaired, or Replaced
	:Denotes Minor Rust Observation Where No Significant Material Loss Noted
	:Denotes General Maintenance Observations

EAST TRUSS (LEVEL 6)						
OBSERV. NO.	Location/Identification			Photo No.	OBSERVATION COMMENTS	RECOMMENDED CORRECTIVE ACTION (CA)
	<sup>1</sup> Chord	Horiz. Location	<sup>2</sup> Item			
344	OU	6.1	C	344	MRB (x2); Diag bolts	Surface prepare and treat, or replace
345	IU	6.3	C	345	Missing Bolt; Chord flange rein plate	Install missing bolt; If interference prevents installation, contact EOR
346	OU	6.3-6.4	C	346	MRB (x1); Diag bolts	Surface prepare and treat, or replace
347	IU	6.4	C	347	Missing Bolt; Chord flange rein plate	Install missing bolt; If interference prevents installation, contact EOR
348	IU	6.5	C	348	Missing Bolt (x2); Chord flange rein plate	Install missing bolt; If interference prevents installation, contact EOR
349	OU	6.5	C	349	Missing Bolt; Chord flange rein plate	Install missing bolt; If interference prevents installation, contact EOR
350	U	6.4-6.5	C	350	MRB (x12); Chord flange rein plate	Surface prepare and treat, or replace
351	OU	6.4	C	351	Missing Bolt; Chord flange rein plate	Install missing bolt; If interference prevents installation, contact EOR
352	L	6.4	C	352	MRB (x1); Horiz wind brace bolts	Surface prepare and treat, or replace
353	O	6.5-6.6	C	353	Diag stitch bolt spacer plate too thin	Replace with 1/2" spacer plate
354	OU	6.2-6.3	C	354	MRB (x2); Diag bolts	Surface prepare and treat, or replace
355	OL	6.5	C	355	MRB (x1); Vertical bolts	Surface prepare and treat, or replace
356	---	6.2	O	356	Moderate Rust; Top rail	Surface prepare and treat, or replace
357	I	6.10	C	357	MRB (x1); Vertical bolts	Surface prepare and treat, or replace
358	IL	6.14-6.15	C	358	MRB (x1); Chord splice plate bolts	Surface prepare and treat, or replace
359	IL	6.17-6.18	Chord	359	Minor Yielding; Chord web ~ Web out 1/2" over 18" span	Contact EOR to determine if any CA is warranted
360	'C' LEG	'C' LEG	O	360	Safety gate does not properly latch closed	Adjust gate to ensure proper closure
361	OL	6.10-6.11	C	361	MRB (x3); Diag bolts	Surface prepare and treat, or replace
362	OL	6.11	C	362	MRB (x1); Chord splice plate bolts	Surface prepare and treat, or replace
363	---	6.18-6.19	O	363	Railing post out of out alignment with adjacent railing	Shim post at toe board attachment to re-align
364	I	6.18-6.19	C	364	MRB (x1); Diag inner wind brace bolts	Surface prepare and treat, or replace
365	---	6.9-6.10	O	365	Railing post out of out alignment with adjacent railing	Shim post at toe board attachment to re-align
366	IL	6.14-6.15	Chord	366	Minor Yielding; Chord web ~ Web out 1/4" over 12" span	Contact EOR to determine if any CA is warranted
367	'B' LEG	'B' LEG	O	367	Safety gate does not properly latch closed, and signage rotated upside down	Adjust gate to ensure proper closure, and rotate signage
368	---	6.26	O	368	Moderate Rust; Top rail	Surface prepare and treat, or replace
369	O	6.25	C	369	MRB (x1); Vertical bolts	Surface prepare and treat, or replace
370	O	6.23	C	370	MRB (x1); Vertical bolts	Surface prepare and treat, or replace
371	---	6.23	O	371	Cut out opening in walkway flooring	Repair flooring with patch, or replace grating piece
372	---	6.23	O	372	Top safety cable bracket cocked to side due to interference with the horiz lifeline	Recommend installing shorter top safety bracket, or consider removing this short safety cable run and require use of standard PPE y-lanyards in place of safety sleeve to maintain 100% tie-off when using ladder
373	---	6.26	O	373	Safety cable loose	Adjust and re-tension safety cable, or consider removing this short safety cable run and require use of standard PPE y-lanyards in place of safety sleeve to maintain 100% tie-off when using ladder
374	---	6.13	O	374	Safety cable loose	Adjust and re-tension safety cable, or consider removing this short safety cable run and require use of standard PPE y-lanyards in place of safety sleeve to maintain 100% tie-off when using ladder

Inspection Summary \* Sutro Tower \* ERI Project 36434/A \* Inspected Aug 20-23 & Dec 17-19, 2018

	;Denotes Occupational Safety Related Observation
	;Denotes Structural Damage Observation Requiring EOR Review
	;Denotes Missing or Damaged Hardware/Components Which Need To Be Installed, Repaired, or Replaced
	;Denotes Minor Rust Observation Where No Significant Material Loss Noted
	;Denotes General Maintenance Observations

EAST TRUSS (LEVEL 6)						
375	I	6.15	Vertical	375	Minor Yielding; Vertical ~ out 9/16" over entire length	Contact EOR to determine if any CA is warranted
376	I	6.23	Vertical	376	Minor Yielding; Vertical ~ out 1/4" over 6"	Contact EOR to determine if any CA is warranted

NOTES: <sup>1</sup>Chord Designation: OU=Outer Upper | OL=Outer Lower | IU=Inner Upper | IL=Inner Lower

<sup>2</sup>Item Designation: L=Leg Member | D=Diagonal | H=Horizontal | C=Connection | O=Other

<sup>3</sup>Observation Abbreviations: MRB=Mild Rust on Bolts

**Inspection Summary \* Sutro Tower \* ERI Project 36434/A \* Inspected Aug 20-23 & Dec 17-19, 2018**

	;Denotes Occupational Safety Related Observation
	;Denotes Structural Damage Observation Requiring EOR Review
	;Denotes Missing or Damaged Hardware/Components Which Need To Be Installed, Repaired, or Replaced
	;Denotes Minor Rust Observation Where No Significant Material Loss Noted
	;Denotes General Maintenance Observations

<b>EAST TRUSS (LEVEL 5)</b>						
OBSERV. NO.	Location/Identification			Photo No.	<sup>3</sup> OBSERVATION COMMENTS	RECOMMENDED CORRECTIVE ACTION (CA)
	<sup>1</sup> Chord	Horiz. Location	<sup>2</sup> Item			
377	U	5.9	O	377	Minor Rust; Open socket retaining nuts	Surface prepare and treat, or replace
378	U	5.9	O	378	Minor Rust; Open socket shear pins	Surface prepare and treat, or replace
379	U	5.9	C	379	MRB (x4); Chord splice plate bolts	Surface prepare and treat, or replace
380	Bc Leg	5.9	C	380	Minor Rust; Gusset plates	Surface prepare and treat
381	U	5.8	C	381	MRB (x8); Chord splice plate bolts	Surface prepare and treat, or replace
382	U	5.8	C	382	MRB (x17); Chord splice plate bolts	Surface prepare and treat, or replace
383	U	5.7	C	383	MRB (x2); Antenna mount bolts	Surface prepare and treat, or replace
384	U	5.7	C	384	MRB (x4); Chord splice plate bolts	Surface prepare and treat, or replace
385	U	5.7	C	385	MRB (x3); Chord splice plate bolts	Surface prepare and treat, or replace
386	U	5.6	C	386	MRB (x9); Chord splice plate bolts	Surface prepare and treat, or replace
387	U	5.6	C	387	MRB (x7); Chord splice plate bolts	Surface prepare and treat, or replace
388	U	5.6	O	388	Minor Rust; Antenna mount	Surface prepare and treat, or replace
389	U	5.5-5.6	O	389	Minor Rust; Chord	Surface prepare and treat
390	U	5.5-5.6	C	390	Minor Rust; Chord bolt holes	Surface prepare and treat
391	U	5.5	C	391	MRB (x5); Chord splice plate bolts	Surface prepare and treat, or replace
392	U	5.5	C	392	MRB (x12); Chord splice plate bolts	Surface prepare and treat, or replace
393	U	5.4-5.5	O	393	Minor Rust; Chord	Surface prepare and treat
394	U	5.4	C	394	MRB (x6); Chord splice plate bolts	Surface prepare and treat, or replace
395	U	5.4	C	395	MRB (x9); Chord splice plate bolts	Surface prepare and treat, or replace
396	U	5.3-5.4	O	396	Minor Rust; Antenna mount	Surface prepare and treat, or replace
397	U	5.3	C	397	MRB (x6); Chord splice plate bolts	Surface prepare and treat, or replace
398	U	5.3	C	398	MRB (x3); Chord splice plate bolts	Surface prepare and treat, or replace
399	U	5.2-5.3	O	399	Minor Rust; Antenna mount	Surface prepare and treat, or replace
400	U	5.2	C	400	MRB (x9); Chord splice plate bolts	Surface prepare and treat, or replace
401	U	5.2	C	401	MRB (x10); Chord splice plate bolts	Surface prepare and treat, or replace
402	U	5.1	C	402	MRB (x4); Chord splice plate bolts	Surface prepare and treat, or replace
403	U	5.1	C	403	MRB (x7); Chord splice plate bolts	Surface prepare and treat, or replace
404	U	5.1	O	404	Minor Rust; Open socket shear and cotter pins	Surface prepare and treat, or replace
405	U	5.1	O	405	Minor Rust; Open socket retaining nuts & threaded rods	Surface prepare and treat, or replace
406	U	5.1	C	406	MRB (x1); Column flange and bolts	Surface prepare and treat, or replace
407	M	5.8	C	407	MRB (x5); Chord splice plate bolts	Surface prepare and treat, or replace
408	M	5.7	C	408	MRB (x3); Chord splice plate bolts	Surface prepare and treat, or replace
409	M	5.6	C	409	MRB (x5); Chord splice plate bolts	Surface prepare and treat, or replace
410	M	5.5	C	410	MRB (x2); Chord splice plate bolts	Surface prepare and treat, or replace
411	M	5.4-5.5	C	411	MRB (x8); Chord splice plate bolts	Surface prepare and treat, or replace
412	M	5.4	C	412	MRB (x6); Chord splice plate bolts	Surface prepare and treat, or replace
413	M	5.2	C	413	MRB (x1); Chord splice plate bolts	Surface prepare and treat, or replace
414	L	5.1	C	414	MRB (x3); Chord splice plate bolts	Surface prepare and treat, or replace
415	L	5.1	C	415	MRB (x6); Chord splice plate bolts	Surface prepare and treat, or replace
416	L	5.1	C	416	MRB (x11); Chord splice plate bolts	Surface prepare and treat, or replace
417	L	5.2	C	417	MRB (x5); Chord splice plate bolts	Surface prepare and treat, or replace

Inspection Summary \* Sutro Tower \* ERI Project 36434/A \* Inspected Aug 20-23 & Dec 17-19, 2018

	;Denotes Occupational Safety Related Observation
	;Denotes Structural Damage Observation Requiring EOR Review
	;Denotes Missing or Damaged Hardware/Components Which Need To Be Installed, Repaired, or Replaced
	;Denotes Minor Rust Observation Where No Significant Material Loss Noted
	;Denotes General Maintenance Observations

EAST TRUSS (LEVEL 5)						
418	L	5.2	C	418	MRB (x4); Chord splice plate bolts	Surface prepare and treat, or replace
419	L	5.3	C	419	MRB (x15); Chord splice plate bolts	Surface prepare and treat, or replace
420	L	5.3	C	420	MRB (x6); Chord splice plate bolts	Surface prepare and treat, or replace
421	L	5.4	C	421	MRB (x7); Chord splice plate bolts	Surface prepare and treat, or replace
422	L	5.5	C	422	MRB (x20); Chord splice plate bolts	Surface prepare and treat, or replace
423	L	5.5	C	423	MRB (x15); Chord splice plate bolts	Surface prepare and treat, or replace
424	L	5.6	C	424	MRB (x5); Chord splice plate bolts	Surface prepare and treat, or replace
425	L	5.7	C	425	MRB (x12); Chord splice plate bolts	Surface prepare and treat, or replace
426	L	5.7	C	426	MRB (x6); Chord splice plate bolts	Surface prepare and treat, or replace
427	L	5.8	C	427	MRB (x3); Chord splice plate bolts	Surface prepare and treat, or replace
428	L	5.8	C	428	MRB (x4); Chord splice plate bolts	Surface prepare and treat, or replace
429	L	5.9	C	429	MRB (x5); Chord splice plate bolts	Surface prepare and treat, or replace
430	L	5.9	C	430	MRB (x4); Chord splice plate bolts	Surface prepare and treat, or replace
431	---	5.9	<b>Bc Column</b>	431	Minor Rust; Column reinforcement plate welds	Surface prepare and treat

NOTES: <sup>1</sup>Chord Designation: U=Upper | M=Mid | L=Lower

<sup>2</sup>Item Designation: L=Leg Member | D=Diagonal | H=Horizontal | C=Connection | O=Other

<sup>3</sup>Observation Abbreviations: MRB=Mild Rust on Bolts

Inspection Summary \* Sutro Tower \* ERI Project 36434/A \* Inspected Aug 20-23 & Dec 17-19, 2018

	;Denotes Occupational Safety Related Observation
	;Denotes Structural Damage Observation Requiring EOR Review
	;Denotes Missing or Damaged Hardware/Components Which Need To Be Installed, Repaired, or Replaced
	;Denotes Minor Rust Observation Where No Significant Material Loss Noted
	;Denotes General Maintenance Observations

EAST TRUSS (LEVEL 4)						
OBSERV. NO.	Location/Identification			Photo No.	<sup>3</sup> OBSERVATION COMMENTS	RECOMMENDED CORRECTIVE ACTION (CA)
	<sup>1</sup> Chord	Horiz. Location	<sup>2</sup> Item			
432	U	4.1	O	432	Minor Rust; Open socket threaded rods	Surface prepare and treat
433	U	4.1	O	433	Minor Rust; Open socket fan plate	Surface prepare and treat
434	U	4.1	O	434	Minor Rust; Antenna mount and hardware	Surface prepare and treat, or replace
435	U	4.7	C	435	MRB (x3); Chord splice plate bolts	Surface prepare and treat, or replace
436	U	4.5-4.6	O	436	Minor Rust; Antenna mount hardware	Surface prepare and treat, or replace
437	U	4.4	C	437	MRB(x24); Antenna mount hardware	Surface prepare and treat, or replace
438	U	4.3-4.4	O	438	Minor Rust; Antenna mount hardware	Surface prepare and treat, or replace
439	U	4.3-4.4	O	439	Holes in panel antenna radomes (x2)	Repair or replace as deemed necessary by tenant
440	U	4.7	O	440	Minor Rust; HLL turnbuckle cotter pins	Surface prepare and treat, or replace
441	U	4.1	C	441	MRB (x1); Chord splice plate bolts	Surface prepare and treat, or replace
442	U	4.2	C	442	MRB (x1); Chord splice plate bolts	Surface prepare and treat, or replace
443	L	4.3	C	443	Minor Rust; Gusset plates	Surface prepare and treat
444	L	4.3	O	444	MRB(x2); Antenna mount hardware	Surface prepare and treat, or replace
445	L	4.4	C	445	Minor Rust; Gusset plates	Surface prepare and treat
446	L	4.4	C	446	MRB (x1); Vertical bolts	Surface prepare and treat, or replace
447	M	4.6	O	447	Minor Rust; Cabinet unistrut framing	Surface prepare and treat, or replace
448	L	4.4	C	448	Moderate Rust; Safety cable top bracket v-bolts	Replace v-bolts
449	L	4.4	O	449	Top safety cable bracket missing weather cap	Install missing weather cap
450	M	4.4	O	450	Moderate Rust; Base on equipment cabinet (KRON)	Surface prepare and treat, or replace

NOTES: <sup>1</sup>Chord Designation: U=Upper | M=Mid | L=Lower

<sup>2</sup>Item Designation: L=Leg Member | D=Diagonal | H=Horizontal | C=Connection | O=Other

<sup>3</sup>Observation Abbreviations: MRB=Mild Rust on Bolts



Inspection Summary \* Sutro Tower \* ERI Project 36434/A \* Inspected Aug 20-23 & Dec 17-19, 2018

	;Denotes Occupational Safety Related Observation
	;Denotes Structural Damage Observation Requiring EOR Review
	;Denotes Missing or Damaged Hardware/Components Which Need To Be Installed, Repaired, or Replaced
	;Denotes Minor Rust Observation Where No Significant Material Loss Noted
	;Denotes General Maintenance Observations

EAST TRUSS (LEVEL 3)						
OBSERV. NO.	Location/Identification			Photo No.	<sup>3</sup> OBSERVATION COMMENTS	RECOMMENDED CORRECTIVE ACTION (CA)
	<sup>1</sup> Chord	Horiz. Location	<sup>2</sup> Item			
451	L	3.3	O	451	Torn HP dish shroud cover	Repair or replace as deemed necessary by tenant
452	U	3.1	O	452	Minor Rust; HLL turnbuckle cotter pins	Surface prepare and treat, or replace
453	U	3.3-3.4	O	453	Minor Rust; Antenna mount	Surface prepare and treat, or replace
454	U	3.4-3.5	C	454	MRB (x2); Antenna mount bolts	Surface prepare and treat, or replace
455	U	3.5	C	455	Moderate Rust; Safety cable bottom bracket v-bolts	Replace v-bolts
456	U	3.9	C	456	Minor Rust; HLL turnbuckle cotter pins	Surface prepare and treat, or replace
457	U	3.7	C	457	Minor Rust; Chord member	Surface prepare and treat
458	U	3.8	C	458	Minor Rust; Chord member	Surface prepare and treat
459	U	3.4-3.5	C	459	Minor Rust; Chord member	Surface prepare and treat
460	U	3.3-3.4	C	460	Minor Rust; Chord member	Surface prepare and treat
461	L	3.1	C	461	MRB (x8); Chord splice plate bolts	Surface prepare and treat, or replace
462	L	3.5	C	462	MRB (x7); Chord splice plate bolts	Surface prepare and treat, or replace
463	L	3.8	C	463	MRB (x3); Chord splice plate bolts	Surface prepare and treat, or replace

NOTES: <sup>1</sup>Chord Designation: U=Upper | M=Mid | L=Lower

<sup>2</sup>Item Designation: L=Leg Member | D=Diagonal | H=Horizontal | C=Connection | O=Other

<sup>3</sup>Observation Abbreviations: MRB=Mild Rust on Bolts

Inspection Summary \* Sutro Tower \* ERI Project 36434/A \* Inspected Aug 20-23 & Dec 17-19, 2018

	;Denotes Occupational Safety Related Observation
	;Denotes Structural Damage Observation Requiring EOR Review
	;Denotes Missing or Damaged Hardware/Components Which Need To Be Installed, Repaired, or Replaced
	;Denotes Minor Rust Observation Where No Significant Material Loss Noted
	;Denotes General Maintenance Observations

EAST TRUSS (LEVEL 2)						
OBSERV. NO.	Location/Identification			Photo No.	OBSERVATION COMMENTS	RECOMMENDED CORRECTIVE ACTION (CA)
	<sup>1</sup> Chord	Horiz. Location	<sup>2</sup> Item			
464	U	2.1	O	464	Minor Rust; HLL turnbuckle cotter pins	Surface prepare and treat, or replace
465	U	2.13	C	465	Minor Rust; HLL turnbuckle cotter pins	Surface prepare and treat, or replace
466	U	2.13	C	466	MRB (x3); Chord splice plate bolts	Surface prepare and treat, or replace
467	U	2.13	C	467	MRB (x6); Chord splice plate bolts	Surface prepare and treat, or replace
468	U	2.12	C	468	MRB (x4); Chord splice plate bolts	Surface prepare and treat, or replace
469	U	2.11	C	469	MRB (x1); Chord splice plate bolts	Surface prepare and treat, or replace
470	U	2.11	C	470	MRB (x1); Chord splice plate bolts	Surface prepare and treat, or replace
471	U	2.10-2.11	C	471	MRB (x4); Cladding support bolts	Surface prepare and treat, or replace
472	U	2.10	C	472	MRB (x4); Chord splice plate bolts	Surface prepare and treat, or replace
473	U	2.10	C	473	Minor Rust; Antenna mount hardware	Surface prepare and treat, or replace
474	U	2.9-2.10	C	474	MRB (x4); Cladding support bolts	Surface prepare and treat, or replace
475	U	2.9	C	475	Minor/Moderate Rust; Antenna support pole	Surface prepare and treat, or replace
476	U	2.9	C	476	Moderate/Severe Rust; Antenna pole base flange bolts	Replace all base flange bolts
477	U	2.9	O	477	Moderate/Severe Rust; Support pole step bolts	Replace steps bolts, or eliminate to prevent usage
478	U	2.9	C	478	MRB (x3); Chord splice plate bolts	Surface prepare and treat, or replace
479	U	2.8	C	479	Minor Rust; Antenna mount hardware	Surface prepare and treat, or replace
480	U	2.7	C	480	Minor Rust; Antenna mount hardware	Surface prepare and treat, or replace
481	U	2.7	C	481	Minor Rust; Antenna mount	Surface prepare and treat, or replace
482	U	2.7	C	482	MRB (x7); Chord splice plate bolts	Surface prepare and treat, or replace
483	U	2.6-2.7	C	483	MRB (x1); Cladding support bolts	Surface prepare and treat, or replace
484	U	2.6	C	484	MRB (x3); Chord splice plate bolts	Surface prepare and treat, or replace
485	U	2.5-2.6	C	485	Minor Rust; Chord member	Surface prepare and treat
486	U	2.5	C	486	MRB (x1); Chord splice plate bolts	Surface prepare and treat, or replace
487	U	2.4	C	487	MRB (x4); Chord splice plate bolts	Surface prepare and treat, or replace
488	U	2.3-2.4	C	488	MRB (x2); Cladding support bolts	Surface prepare and treat, or replace
489	U	2.2-2.4	C	489	Minor Rust; Antenna mounts & hardware	Surface prepare and treat, or replace
490	U	2.2	C	490	MRB (x3); Chord splice plate bolts	Surface prepare and treat, or replace
491	U	2.2	C	491	MRB (x3); Chord splice plate bolts	Surface prepare and treat, or replace
492	U	2.1	C	492	MRB (x2); Chord splice plate bolts	Surface prepare and treat, or replace
493	U	2.1	C	493	MRB (x2); Chord splice plate bolts	Surface prepare and treat, or replace
494	L	2.4	C	494	MRB (x8); Antenna support pole bolts	Surface prepare and treat, or replace
495	L	2.4	C	495	MRB (x1); External platform framing bolts	Surface prepare and treat, or replace
496	M	2.4	C	496	Minor Rust; Line elbow support chain and turnbuckle	Surface prepare and treat, or replace
497	---	2.13	Bc Column	497	Minor Rust; Column flange	Surface prepare and treat
498	L	2.13	C	498	MRB (x2); Chord splice plate bolts	Surface prepare and treat, or replace
499	U	2.12	C	499	MRB (x2); Chord splice plate bolts	Surface prepare and treat, or replace
500	U	2.8	C	500	MRB (x1); Chord splice plate bolts	Surface prepare and treat, or replace
501	---	2.7	C	501	Minor Rust; Vertical flange	Surface prepare and treat
502	U	2.7	C	502	MRB (x5); Chord splice plate bolts	Surface prepare and treat, or replace
503	U	2.5	C	503	MRB (x4); Chord splice plate bolts	Surface prepare and treat, or replace
504	U	2.3	C	504	MRB (x1); Chord splice plate bolts	Surface prepare and treat, or replace

Inspection Summary \* Sutro Tower \* ERI Project 36434/A \* Inspected Aug 20-23 & Dec 17-19, 2018

	;Denotes Occupational Safety Related Observation
	;Denotes Structural Damage Observation Requiring EOR Review
	;Denotes Missing or Damaged Hardware/Components Which Need To Be Installed, Repaired, or Replaced
	;Denotes Minor Rust Observation Where No Significant Material Loss Noted
	;Denotes General Maintenance Observations

EAST TRUSS (LEVEL 2)						
505	M	2.2	C	505	MRB (x2); Inner brace bolts	Surface prepare and treat, or replace
506	L	2.2	C	506	MRB (x3); Inner brace bolts	Surface prepare and treat, or replace
507	L	2.2	C	507	MRB (x3); Inner brace bolts	Surface prepare and treat, or replace
508	L	2.3	C	508	MRB (x5); Chord splice plate bolts	Surface prepare and treat, or replace
509	L	2.3	C	509	Minor/Moderate Rust; Vertical web	Surface prepare and treat
510	L	2.5	C	510	MRB (x1); Chord splice plate bolts	Surface prepare and treat, or replace
511	L	2.6	C	511	MRB (x2); Chord splice plate bolts	Surface prepare and treat, or replace
512	L	2.7	C	512	MRB (x4); Chord splice plate bolts	Surface prepare and treat, or replace
513	L	2.9	C	513	MRB (x4); Chord splice plate bolts	Surface prepare and treat, or replace
514	L	2.9	C	514	Minor Rust; Vertical flange	Surface prepare and treat
515	L	2.9	C	515	Minor Rust; Chord flange	Surface prepare and treat
516	L	2.12	C	516	MRB (x3); Chord splice plate bolts	Surface prepare and treat, or replace
517	L	2.13	C	517	MRB (x3); Chord splice plate bolts	Surface prepare and treat, or replace

NOTES: <sup>1</sup>Chord Designation: U=Upper | M=Mid | L=Lower

<sup>2</sup>Item Designation: L=Leg Member | D=Diagonal | H=Horizontal | C=Connection | O=Other

<sup>3</sup>Observation Abbreviations: MRB=Mild Rust on Bolts

Inspection Summary \* Sutro Tower \* ERI Project 36434/A \* Inspected Aug 20-23 & Dec 17-19, 2018

	;Denotes Occupational Safety Related Observation
	;Denotes Structural Damage Observation Requiring EOR Review
	;Denotes Missing or Damaged Hardware/Components Which Need To Be Installed, Repaired, or Replaced
	;Denotes Minor Rust Observation Where No Significant Material Loss Noted
	;Denotes General Maintenance Observations

MISCELLANEOUS				
OBSERV. NO.	Location/Identification	Photo No.	<sup>2</sup> OBSERVATION COMMENTS	RECOMMENDED CORRECTIVE ACTION (CA)
518	STRANDS	518	Strand high frequency dampers are in poor condition throughout structure (numerous broken/degraded safeties, stiff/corroded damper cables, missing dampers, etc.)	Replace high frequency strand dampers
519	Z-Face (Inside 'B' Leg)	519	Minor Rust; Spring hangers on (3) 6-1/8" lines (typ.)	Treat or replace springs if lines are to remain

Picture 1: OBSERVATION 1



*Missing Step Bolt Near Base at Climbing Pole*

Picture 2: OBSERVATION 2



Picture 3: OBSERVATION 3



Picture 4: OBSERVATION 4



Picture 5: OBSERVATION 5



Picture 6: OBSERVATION 6



Picture 7: OBSERVATION 7



Picture 8: OBSERVATION 8



Picture 9: OBSERVATION 9



Picture 10: OBSERVATION 10



Picture 11: OBSERVATION 11



Picture 12: OBSERVATION 12



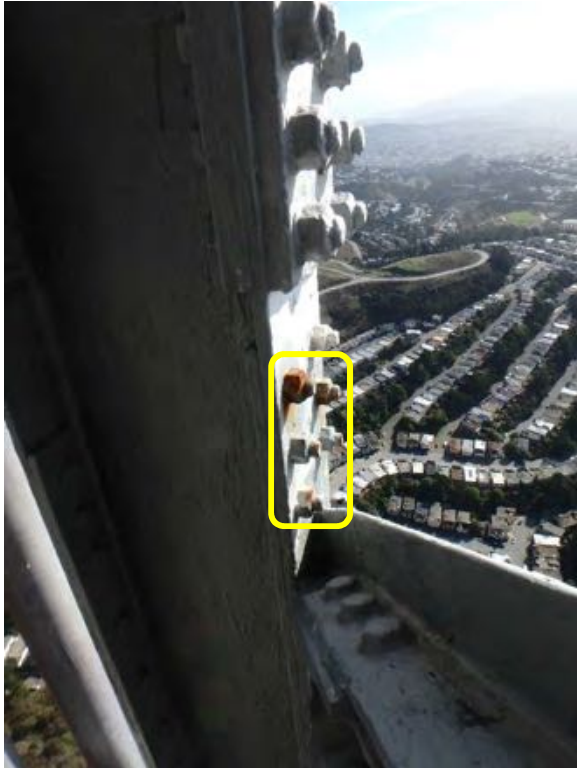
Picture 13: OBSERVATION 13



Picture 14: OBSERVATION 14



Picture 15: OBSERVATION 15

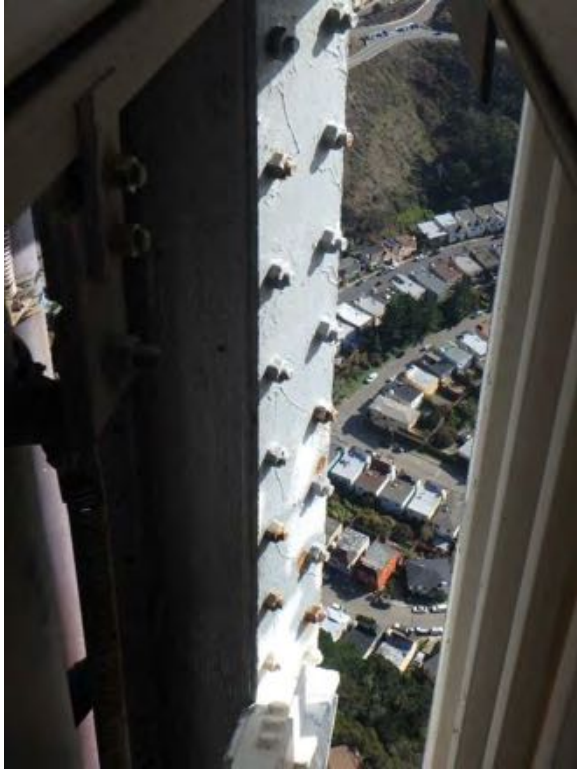


Picture 16: OBSERVATION 16

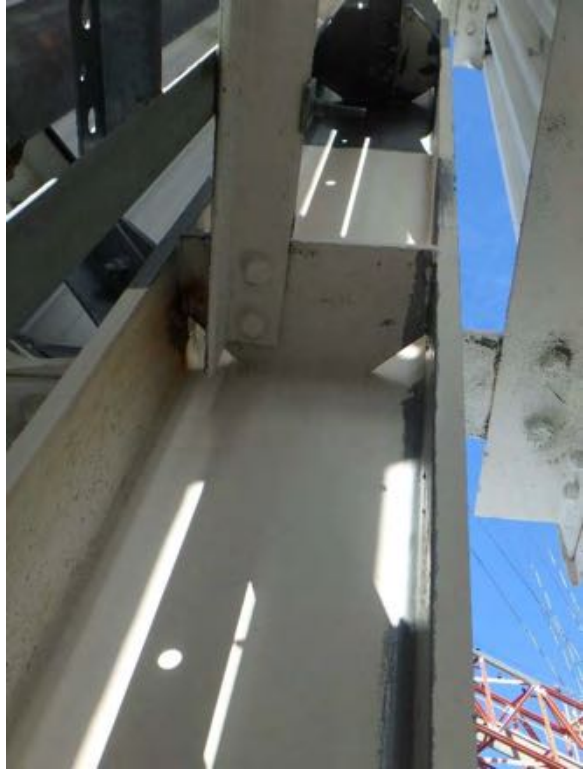




Picture 17: OBSERVATION 17



Picture 18: OBSERVATION 18



Picture 19: OBSERVATION 19



Picture 20: OBSERVATION 20



Picture 21: OBSERVATION 21



Picture 22: OBSERVATION 22



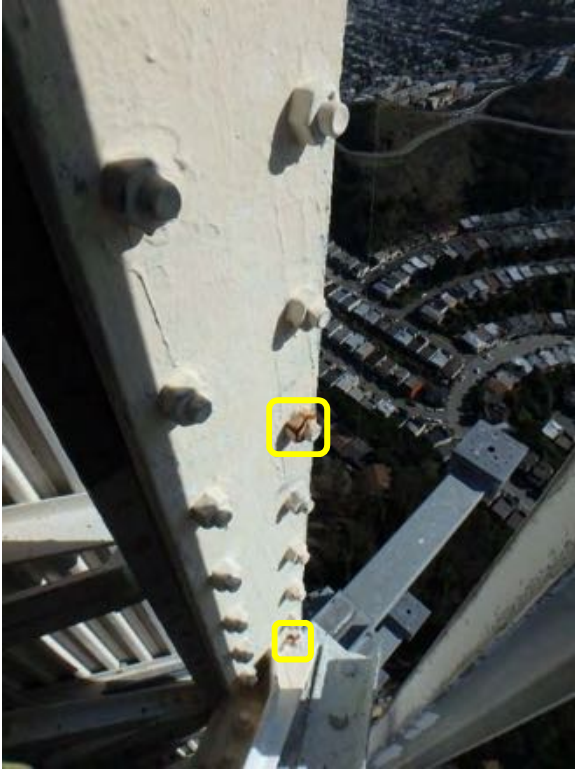
Picture 23: OBSERVATION 23



Picture 24: OBSERVATION 24



Picture 25: OBSERVATION 25



Picture 26: OBSERVATION 26



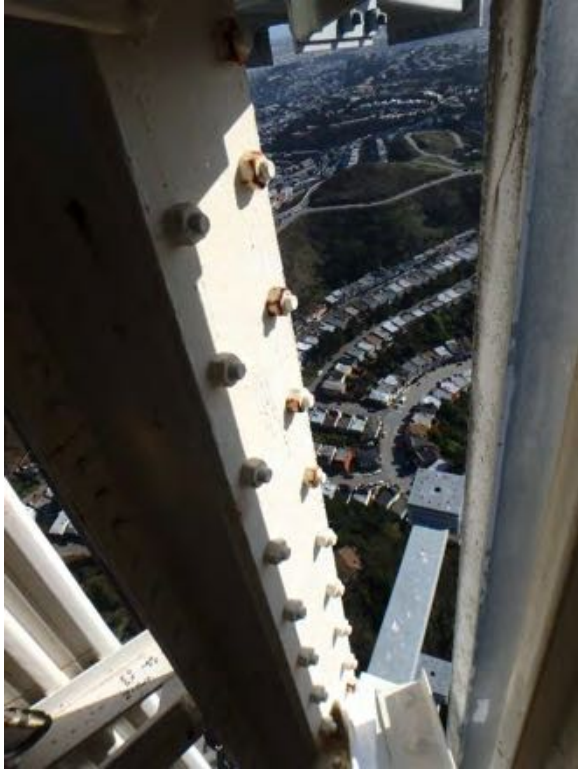
Picture 27: OBSERVATION 27



Picture 28: OBSERVATION 28



Picture 29: OBSERVATION 29



Picture 30: OBSERVATION 30



Picture 31: OBSERVATION 31



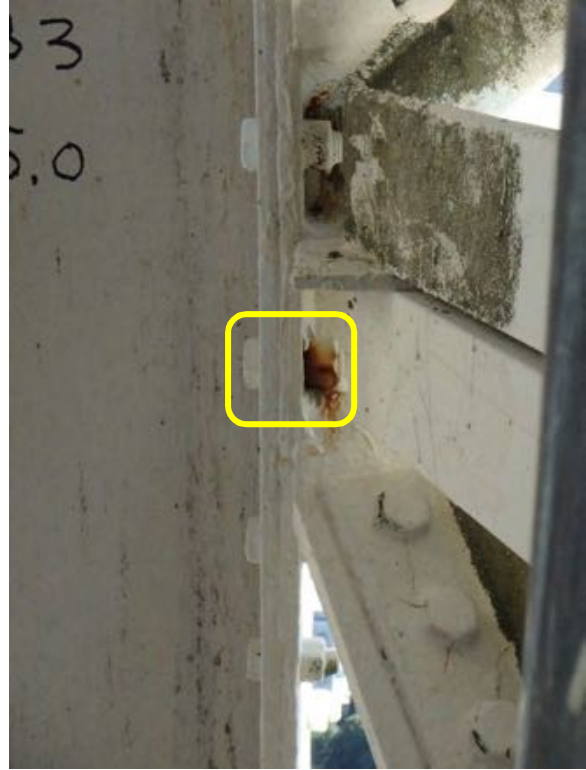
Picture 32: OBSERVATION 32



Picture 33: OBSERVATION 33



Picture 34: OBSERVATION 34



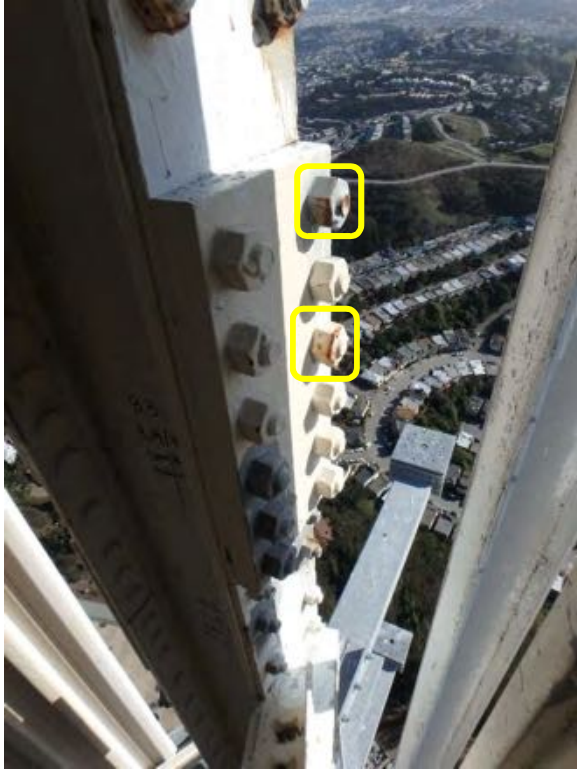
Picture 35: OBSERVATION 35



Picture 36: OBSERVATION 36



Picture 37: OBSERVATION 37



Picture 38: OBSERVATION 38



Picture 39: OBSERVATION 39



Picture 40: OBSERVATION 40



Picture 41: OBSERVATION 41



Picture 42: OBSERVATION 42



Picture 43: OBSERVATION 43



Picture 44: OBSERVATION 44



Picture 45: OBSERVATION 45



Picture 46: OBSERVATION 46



Picture 47: OBSERVATION 47



Picture 48: OBSERVATION 48





Picture 49: OBSERVATION 49



Picture 50: OBSERVATION 50



Picture 51: OBSERVATION 51



Picture 52: OBSERVATION 52



Picture 53: OBSERVATION 53



Picture 54: OBSERVATION 54



Picture 55: OBSERVATION 55



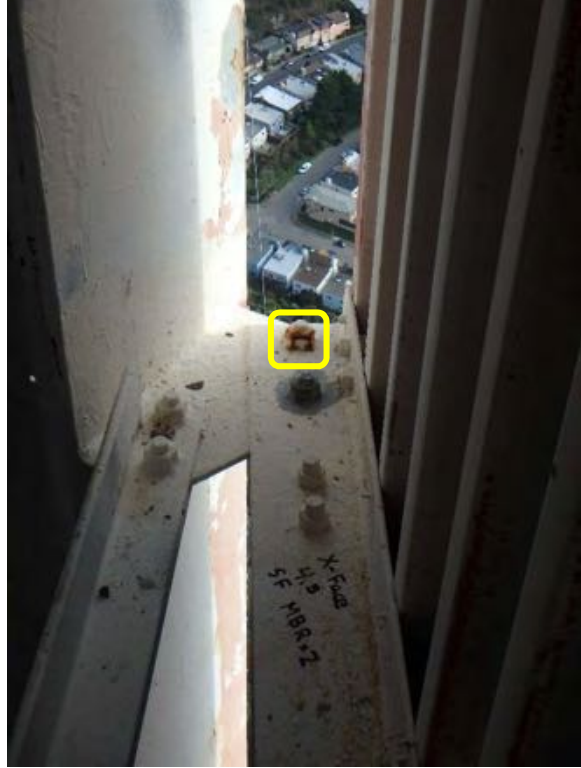
Picture 56: OBSERVATION 56



Picture 57: OBSERVATION 57



Picture 58: OBSERVATION 58



Picture 59: OBSERVATION 59



Picture 60: OBSERVATION 60



Picture 61: OBSERVATION 61



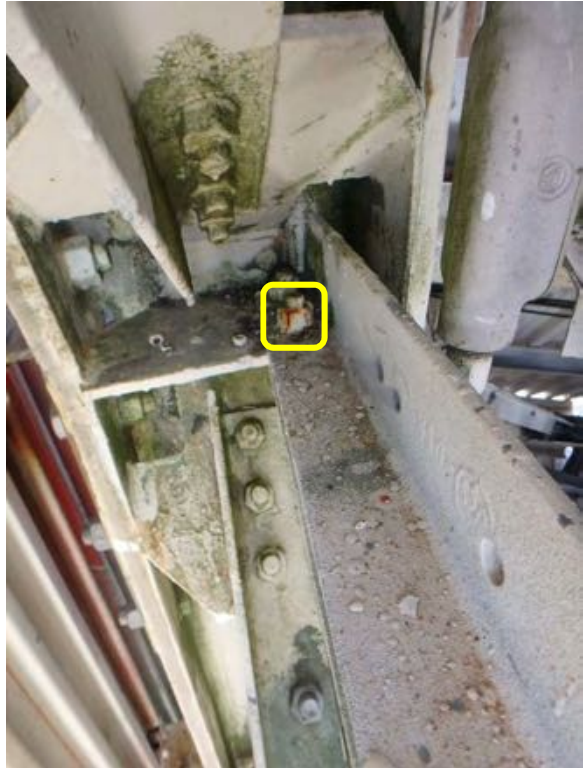
Picture 62: OBSERVATION 62



Picture 63: OBSERVATION 63



Picture 64: OBSERVATION 64



Picture 65: OBSERVATION 65



Picture 66: OBSERVATION 66



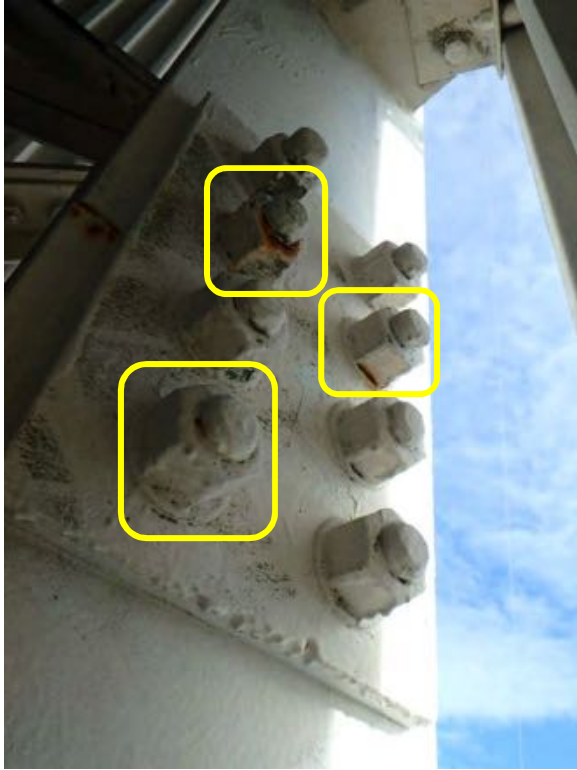
Picture 67: OBSERVATION 67



Picture 68: OBSERVATION 68



Picture 69: OBSERVATION 69



Picture 70: OBSERVATION 70



Picture 71: OBSERVATION 71



Picture 72: OBSERVATION 72



Picture 73: OBSERVATION 73



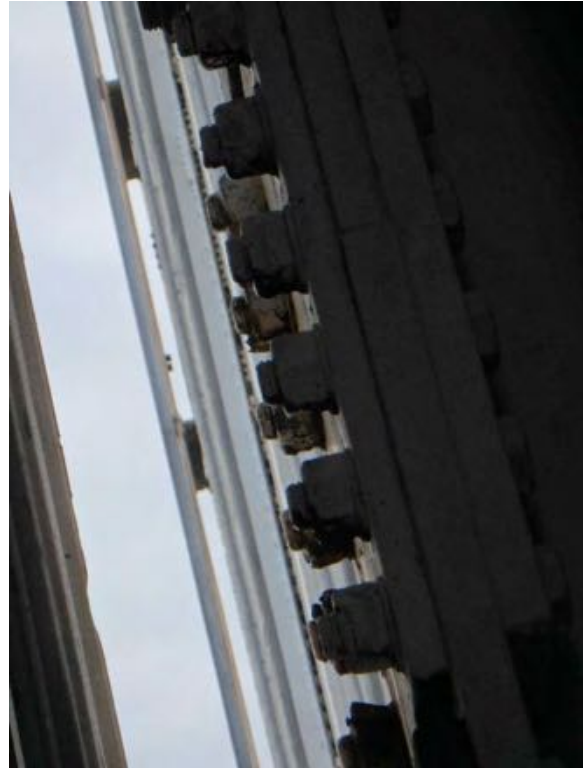
Picture 74: OBSERVATION 74



Picture 75: OBSERVATION 75



Picture 76: OBSERVATION 76



Picture 77: OBSERVATION 77



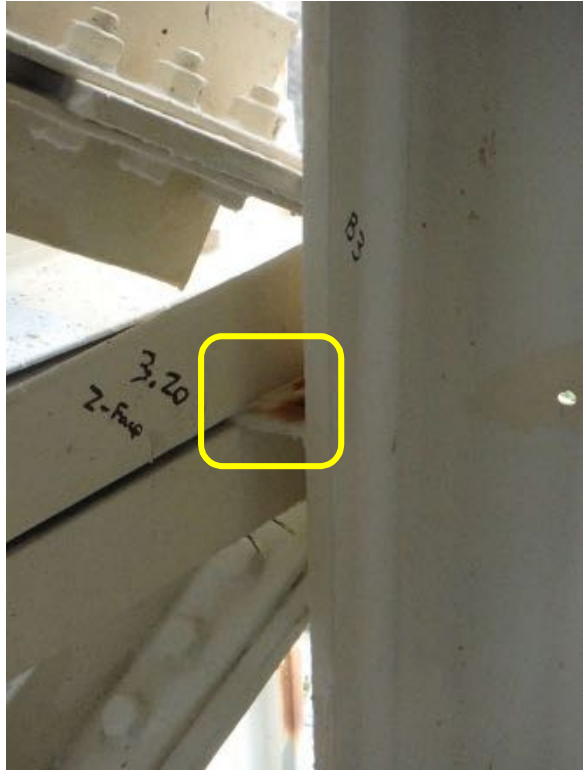
Picture 78: OBSERVATION 78



Picture 79: OBSERVATION 79

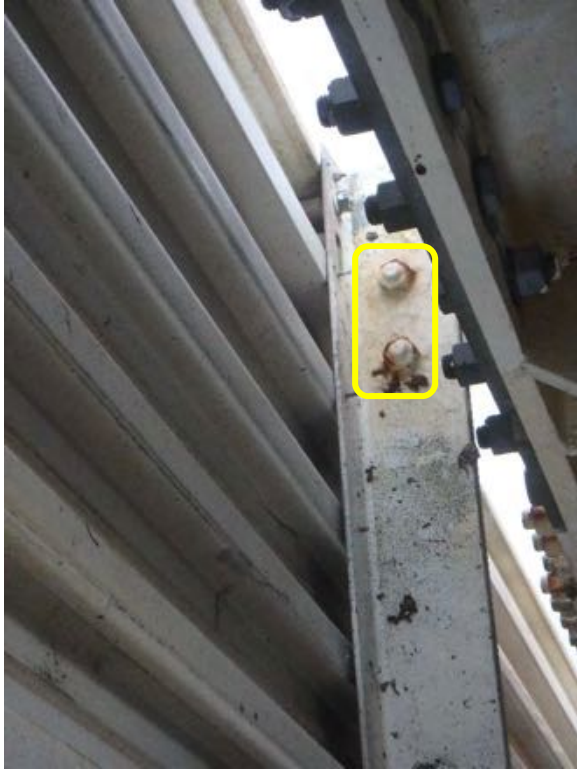


Picture 80: OBSERVATION 80

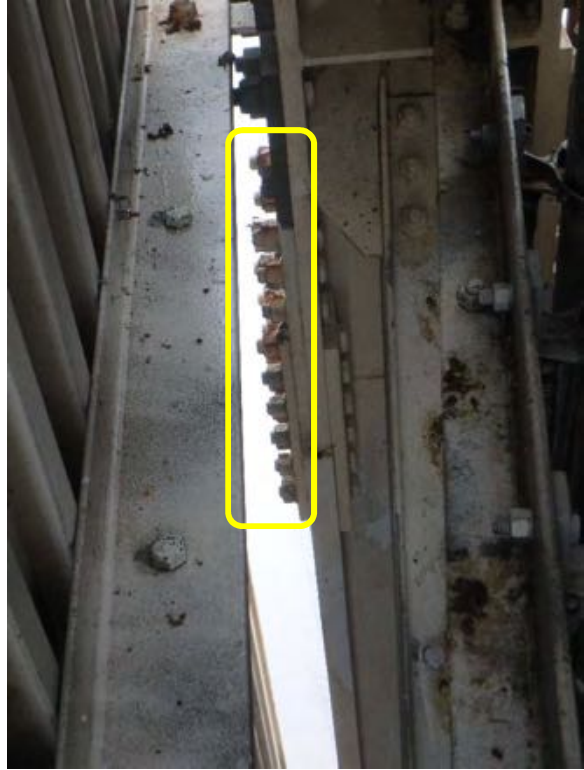




Picture 81: OBSERVATION 81



Picture 82: OBSERVATION 82



Picture 83: OBSERVATION 83



Picture 84: OBSERVATION 84



Picture 85: OBSERVATION 85



Picture 86: OBSERVATION 86



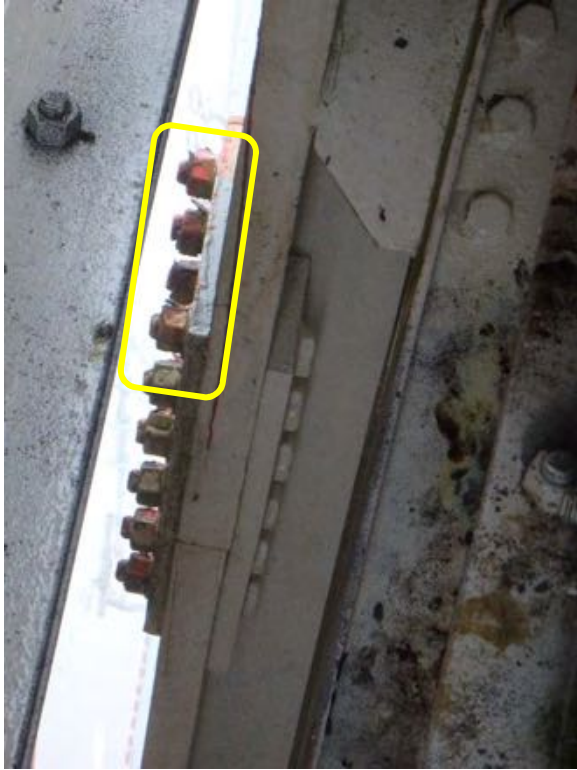
Picture 87: OBSERVATION 87



Picture 88: OBSERVATION 88



Picture 89: OBSERVATION 89



Picture 90: OBSERVATION 90



Picture 91: OBSERVATION 91



Picture 92: OBSERVATION 92



Picture 93: OBSERVATION 93



Picture 94: OBSERVATION 94



Picture 95: OBSERVATION 95



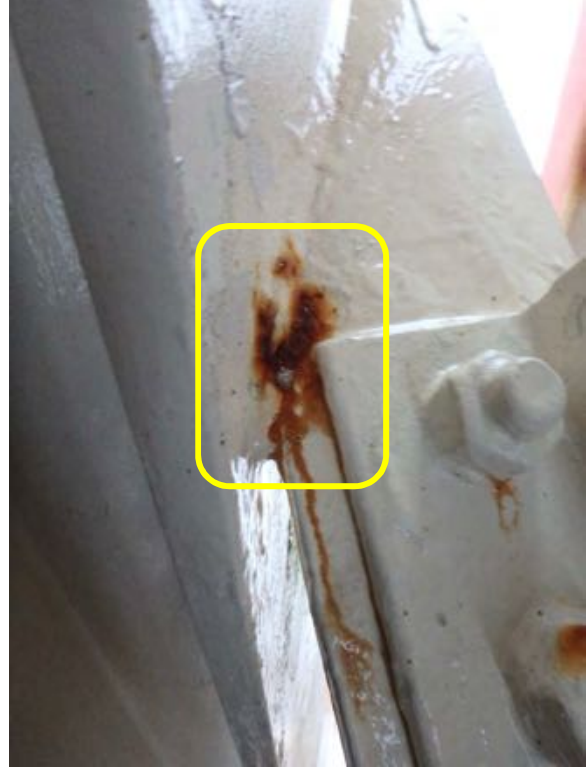
Picture 96: OBSERVATION 96



Picture 97: OBSERVATION 97



Picture 98: OBSERVATION 98



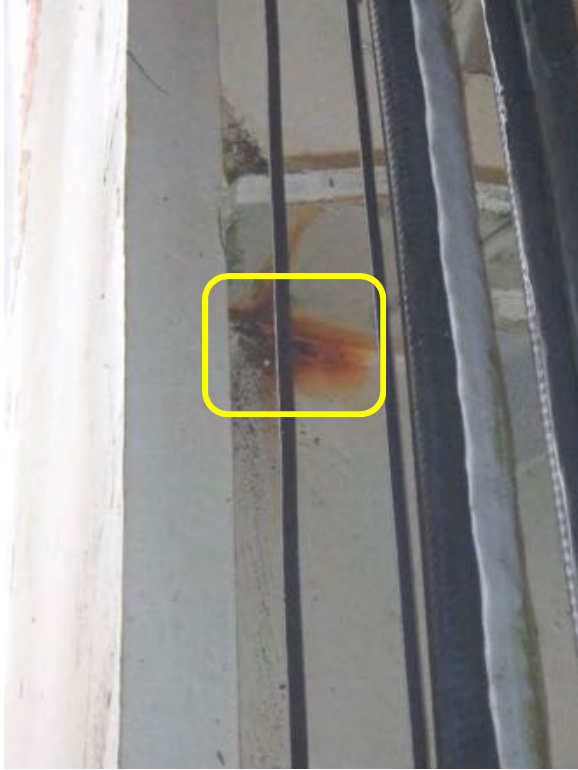
Picture 99: OBSERVATION 99



Picture 100: OBSERVATION 100



Picture 101: OBSERVATION 101



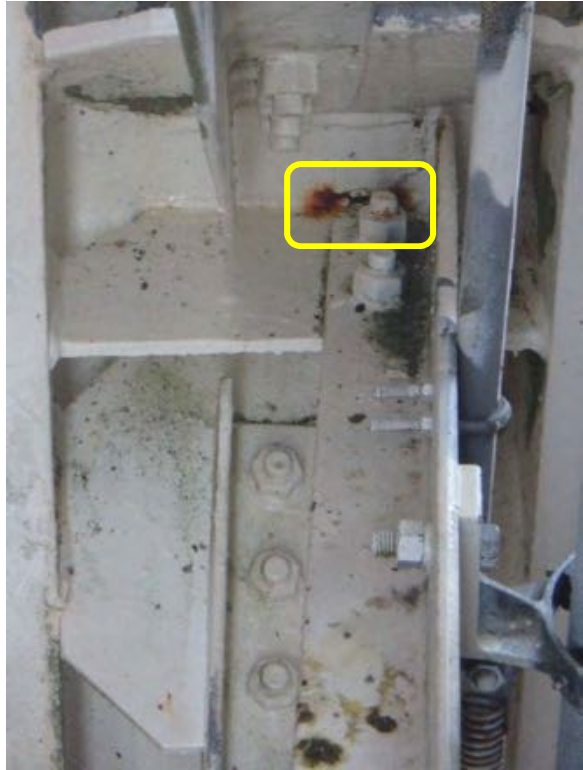
Picture 102: OBSERVATION 102



Picture 103: OBSERVATION 103



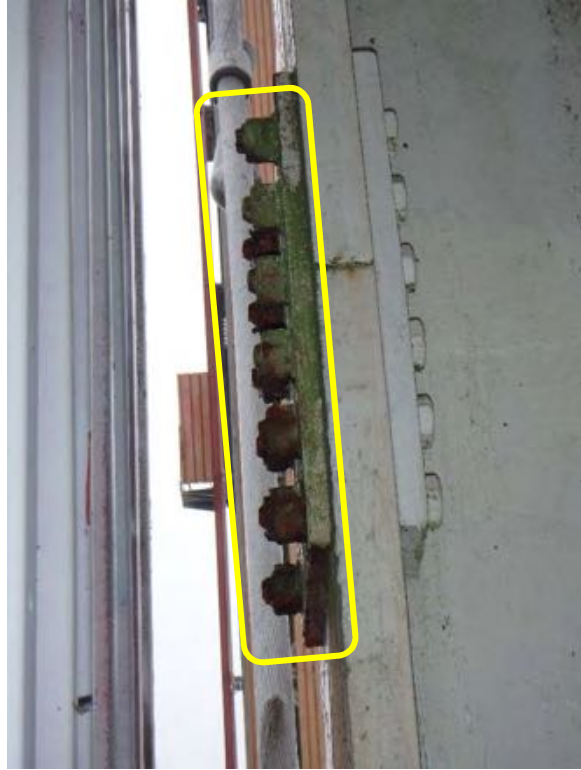
Picture 104: OBSERVATION 104



Picture 105: OBSERVATION 105



Picture 106: OBSERVATION 106



Picture 107: OBSERVATION 107



Picture 108: OBSERVATION 108



Picture 109: OBSERVATION 109



Picture 110: OBSERVATION 110



Picture 111: OBSERVATION 111



Picture 112: OBSERVATION 112





Picture 113: OBSERVATION 113



Picture 114: OBSERVATION 114



Picture 115: OBSERVATION 115



Picture 116: OBSERVATION 116



Picture 117: OBSERVATION 117



Picture 118: OBSERVATION 118



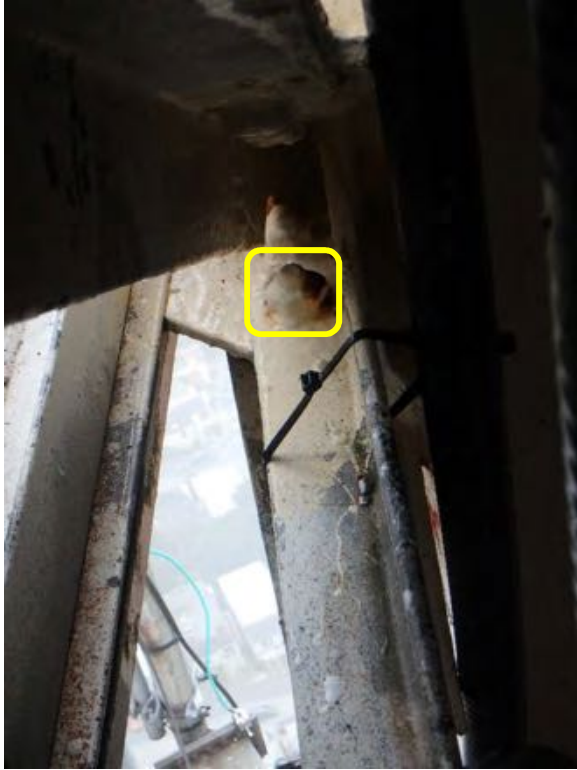
Picture 119: OBSERVATION 119



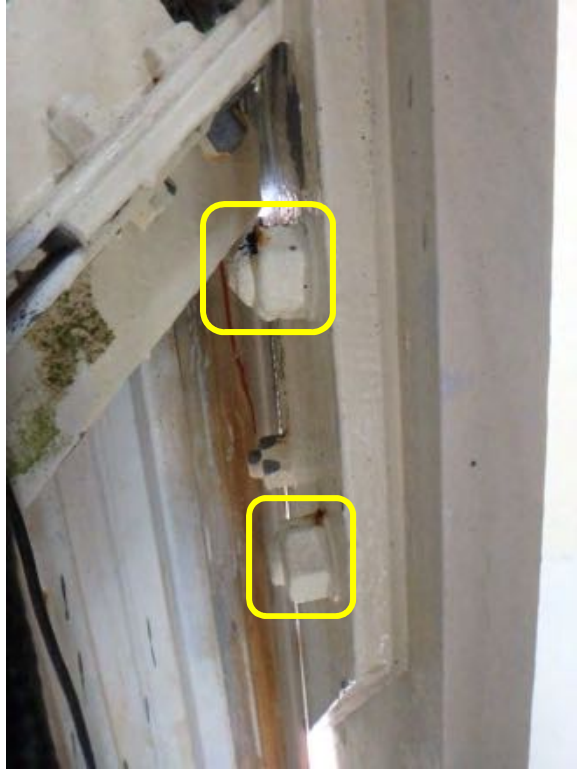
Picture 120: OBSERVATION 120



Picture 121: OBSERVATION 121



Picture 122: OBSERVATION 122



Picture 123: OBSERVATION 123



Picture 124: OBSERVATION 124



Picture 125: OBSERVATION 125



Picture 126: OBSERVATION 126



Picture 127: OBSERVATION 127



Picture 128: OBSERVATION 128



Picture 129: OBSERVATION 129



Picture 130: OBSERVATION 130



Picture 131: OBSERVATION 131



Picture 132: OBSERVATION 132



Picture 133: OBSERVATION 133



Picture 134: OBSERVATION 134



Picture 135: OBSERVATION 135



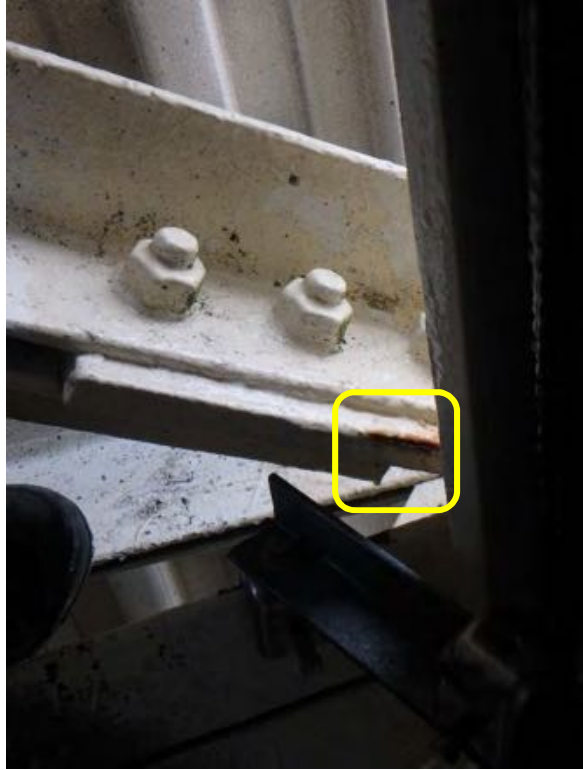
Picture 136: OBSERVATION 136



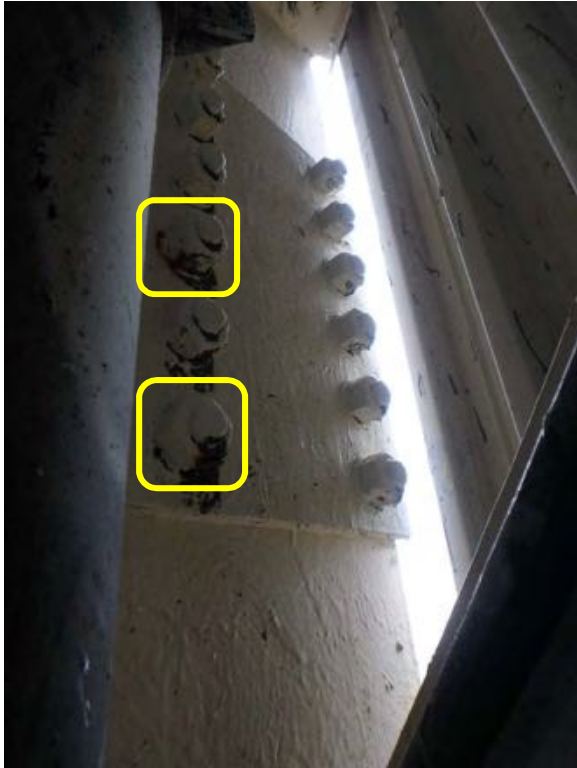
Picture 137: OBSERVATION 137



Picture 138: OBSERVATION 138



Picture 139: OBSERVATION 139



Picture 140: OBSERVATION 140



Picture 141: OBSERVATION 141



Picture 142: OBSERVATION 142



Picture 143: OBSERVATION 143



Picture 144: OBSERVATION 144





Picture 145: OBSERVATION 145



Picture 146: OBSERVATION 146



Picture 147: OBSERVATION 147



Picture 148: OBSERVATION 148



Picture 149: OBSERVATION 149



Picture 150: OBSERVATION 150



Picture 151: OBSERVATION 151



Picture 152: OBSERVATION 152



Picture 153: OBSERVATION 153



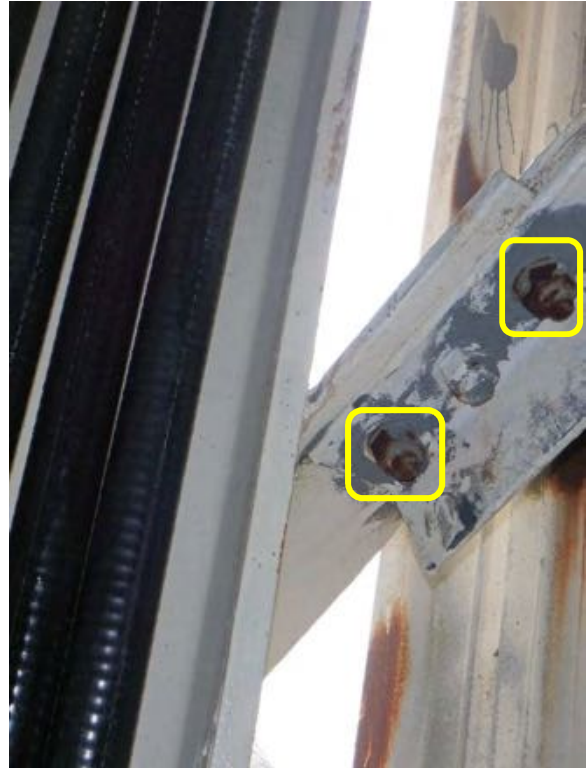
Picture 154: OBSERVATION 154



Picture 155: OBSERVATION 155



Picture 156: OBSERVATION 156



Picture 157: OBSERVATION 157



Picture 158: OBSERVATION 158



Picture 159: OBSERVATION 159



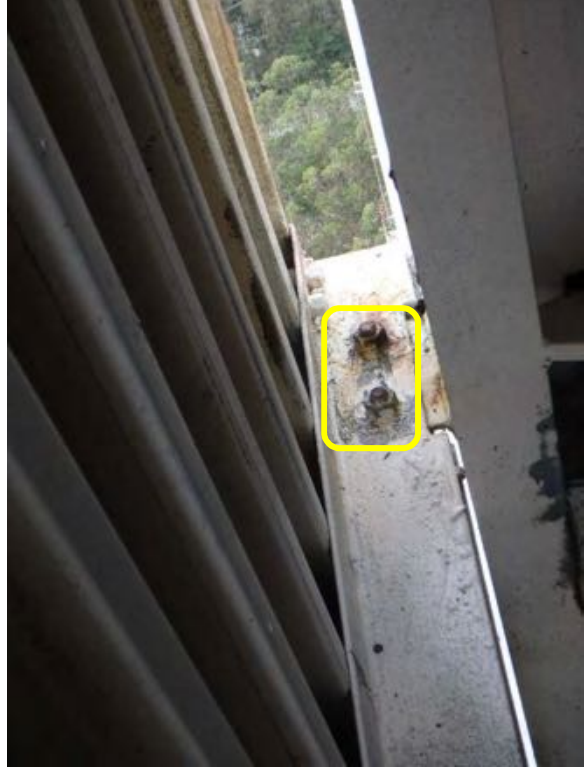
Picture 160: OBSERVATION 160



Picture 161: OBSERVATION 161



Picture 162: OBSERVATION 162



Picture 163: OBSERVATION 163



Picture 164: OBSERVATION 164



Picture 165: OBSERVATION 165



Picture 166: OBSERVATION 166



Picture 167: OBSERVATION 167



Picture 168: OBSERVATION 168



Picture 169: OBSERVATION 169



Picture 170: OBSERVATION 170



Picture 171: OBSERVATION 171



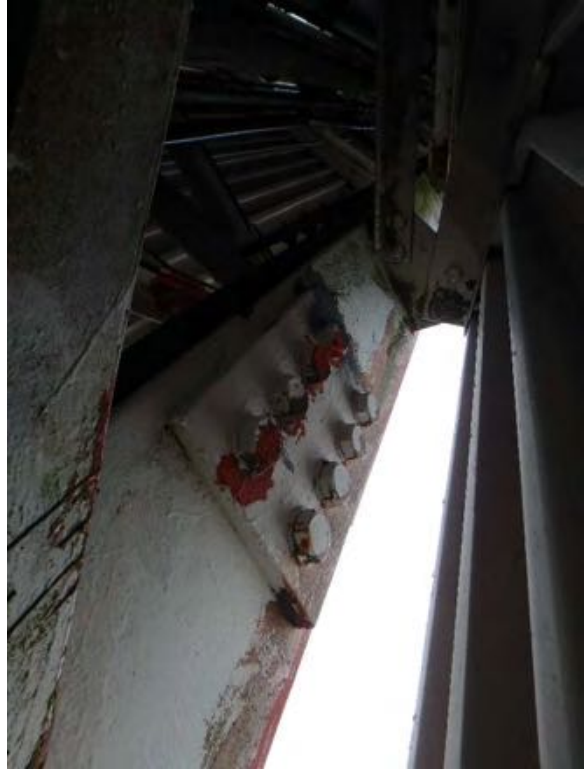
Picture 172: OBSERVATION 172



Picture 173: OBSERVATION 173



Picture 174: OBSERVATION 174



Picture 175: OBSERVATION 175

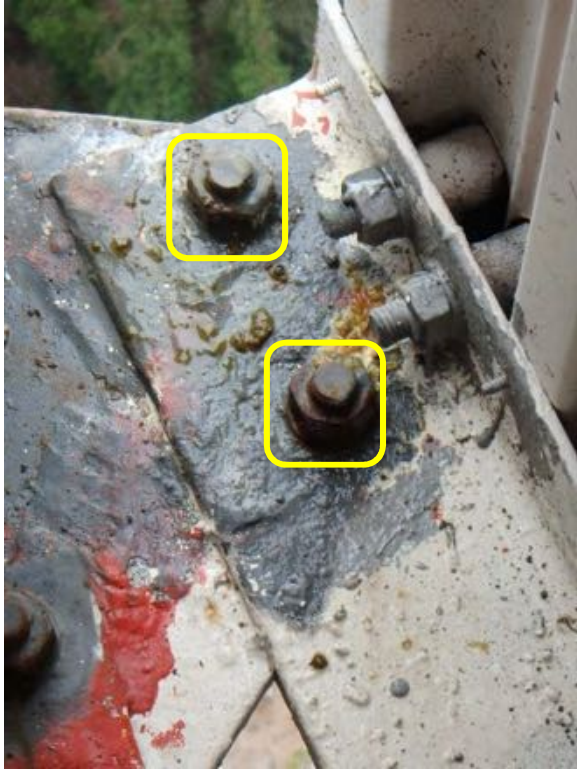


Picture 176: OBSERVATION 176





Picture 177: OBSERVATION 177



Picture 178: OBSERVATION 178



Picture 179: OBSERVATION 179



Picture 180: OBSERVATION 180



Picture 181: OBSERVATION 181



Picture 182: OBSERVATION 182



Picture 183: OBSERVATION 183



Picture 184: OBSERVATION 184



Picture 185: OBSERVATION 185



Picture 186: OBSERVATION 186



Picture 187: OBSERVATION 187



Picture 188: OBSERVATION 188



Picture 189: OBSERVATION 189



Picture 190: OBSERVATION 190



Picture 191: OBSERVATION 191



Picture 192: OBSERVATION 192



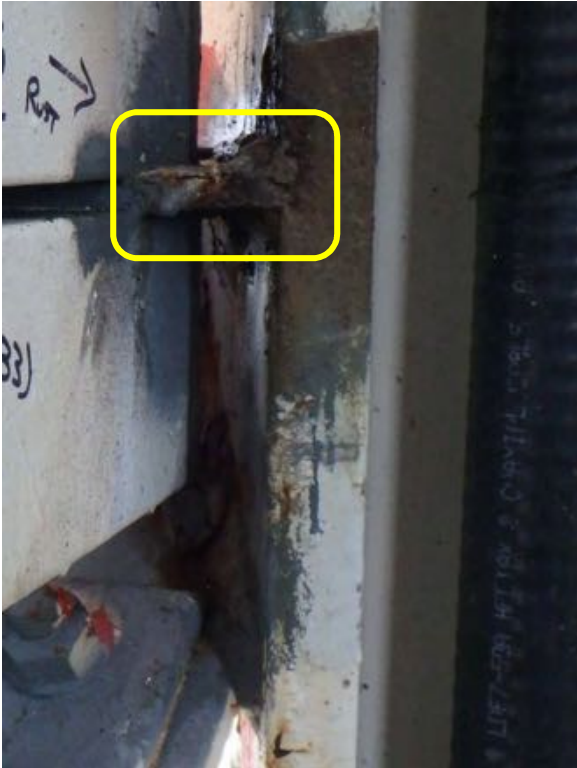
Picture 193: OBSERVATION 193



Picture 194: OBSERVATION 194



Picture 195: OBSERVATION 195



Picture 196: OBSERVATION 196



Picture 197: OBSERVATION 197



Picture 198: OBSERVATION 198



Picture 199: OBSERVATION 199



Picture 200: OBSERVATION 200



Picture 201: OBSERVATION 201



Picture 202: OBSERVATION 202



Picture 203: OBSERVATION 203



Picture 204: OBSERVATION 204



Picture 205: OBSERVATION 205



Picture 206: OBSERVATION 206



Picture 207: OBSERVATION 207



Picture 208: OBSERVATION 208





Picture 209: OBSERVATION 209



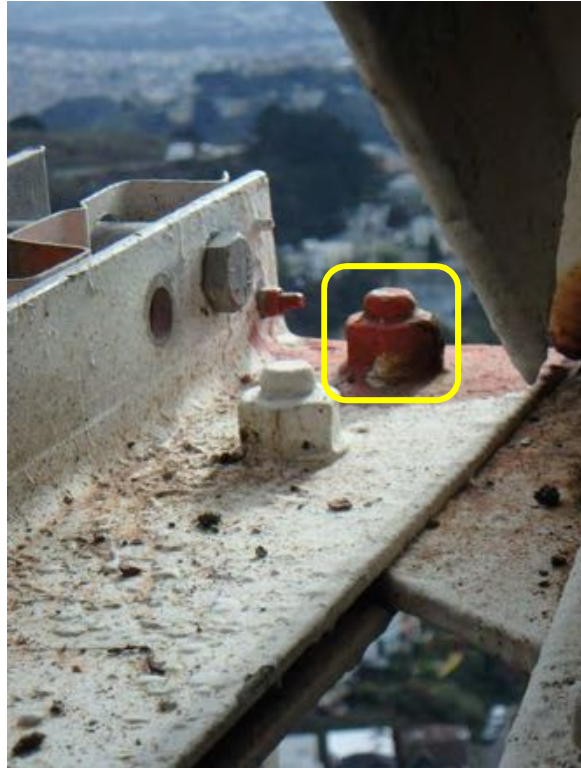
Picture 210: OBSERVATION 210



Picture 211: OBSERVATION 211



Picture 212: OBSERVATION 212



Picture 213: OBSERVATION 213



Picture 214: OBSERVATION 214



Picture 215: OBSERVATION 215



Picture 216: OBSERVATION 216



Picture 217: OBSERVATION 217



Picture 218: OBSERVATION 218



Picture 219: OBSERVATION 219



Picture 220: OBSERVATION 220



Picture 221: OBSERVATION 221



Picture 222: OBSERVATION 222



Picture 223: OBSERVATION 223



Picture 224: OBSERVATION 224



Picture 225: OBSERVATION 225



Picture 226: OBSERVATION 226



Picture 227: OBSERVATION 227



Picture 228: OBSERVATION 228



Picture 229: OBSERVATION 229



Picture 230: OBSERVATION 230



Picture 231: OBSERVATION 231



Picture 232: OBSERVATION 232



Picture 233: OBSERVATION 233



Picture 234: OBSERVATION 234



Picture 235: OBSERVATION 235



Picture 236: OBSERVATION 236



Picture 237: OBSERVATION 237



Picture 238: OBSERVATION 238



Picture 239: OBSERVATION 239



Picture 240: OBSERVATION 240





Picture 241: OBSERVATION 241



Picture 242: OBSERVATION 242



Picture 243: OBSERVATION 243



Picture 244: OBSERVATION 244



Picture 245: OBSERVATION 245



Picture 246: OBSERVATION 246



Picture 247: OBSERVATION 247



Picture 248: OBSERVATION 248



Picture 249: OBSERVATION 249



Picture 250: OBSERVATION 250



Picture 251: OBSERVATION 251



Picture 252: OBSERVATION 252



Picture 253: OBSERVATION 253



Picture 254: OBSERVATION 254



Picture 255: OBSERVATION 255



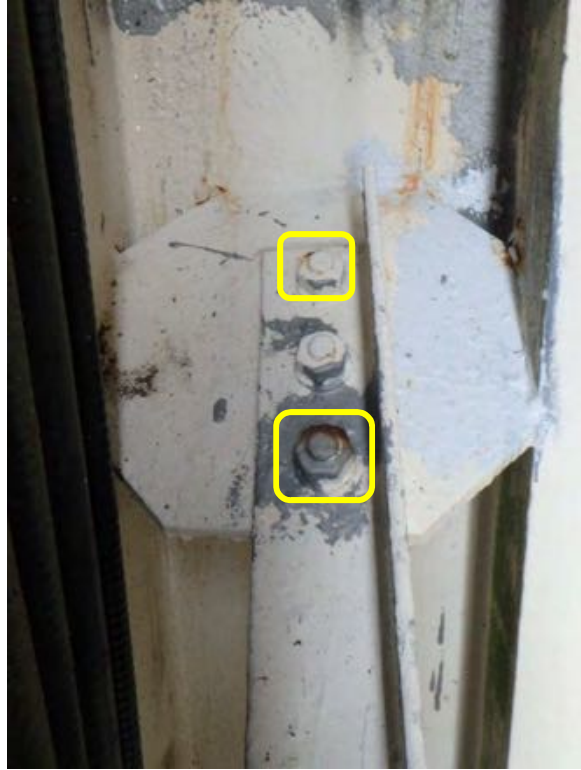
Picture 256: OBSERVATION 256



Picture 257: OBSERVATION 257



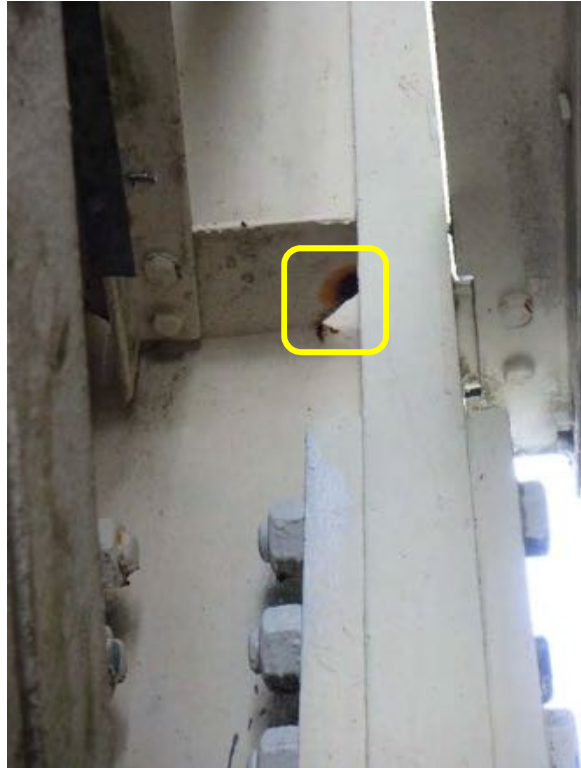
Picture 258: OBSERVATION 258



Picture 259: OBSERVATION 259



Picture 260: OBSERVATION 260



Picture 261: OBSERVATION 261



Picture 262: OBSERVATION 262



Picture 263: OBSERVATION 263



Picture 264: OBSERVATION 264



Picture 265: OBSERVATION 265



Picture 266: OBSERVATION 266



Picture 267: OBSERVATION 267



Picture 268: OBSERVATION 268



Picture 269: OBSERVATION 269



Picture 270: OBSERVATION 270



Picture 271: OBSERVATION 271



Picture 272: OBSERVATION 272





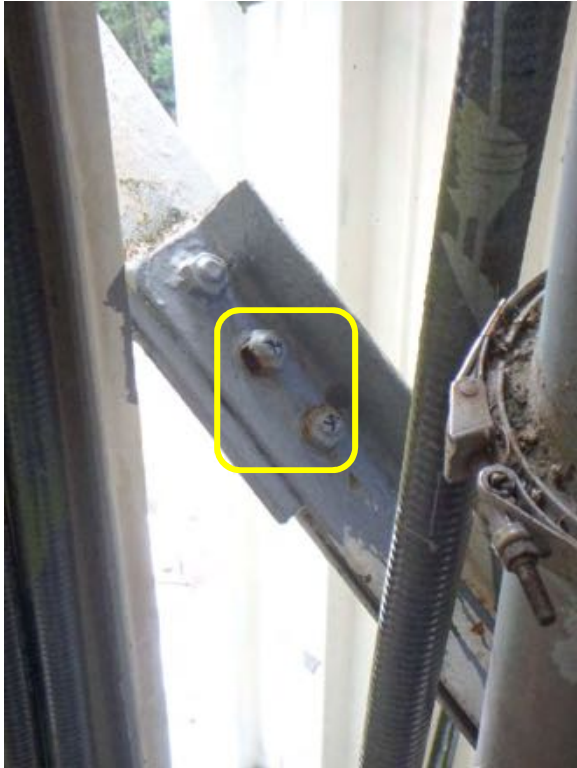
Picture 273: OBSERVATION 273



Picture 274: OBSERVATION 274



Picture 275: OBSERVATION 275



Picture 276: OBSERVATION 276



Picture 277: OBSERVATION 277



Picture 278: OBSERVATION 278



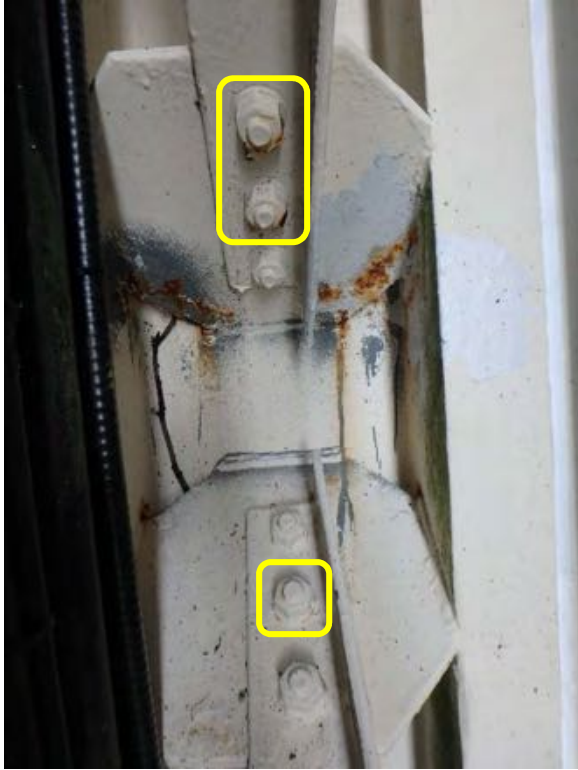
Picture 279: OBSERVATION 279



Picture 280: OBSERVATION 280



Picture 281: OBSERVATION 281



Picture 282: OBSERVATION 282



Picture 283: OBSERVATION 283



Picture 284: OBSERVATION 284



Picture 285: OBSERVATION 285



Picture 286: OBSERVATION 286



Picture 287: OBSERVATION 287



Picture 288: OBSERVATION 288



Picture 289: OBSERVATION 289



Picture 290: OBSERVATION 290



Picture 291: OBSERVATION 291



Picture 292: OBSERVATION 292



Picture 293: OBSERVATION 293



Picture 294: OBSERVATION 294



Picture 295: OBSERVATION 295



Picture 296: OBSERVATION 296



Picture 297: OBSERVATION 297



Picture 298: OBSERVATION 298



Picture 299: OBSERVATION 299



Picture 300: OBSERVATION 300



Picture 301: OBSERVATION 301



Picture 302: OBSERVATION 302



Picture 303: OBSERVATION 303



Picture 304: OBSERVATION 304





Picture 305: OBSERVATION 305



Picture 306: OBSERVATION 306



Picture 307: OBSERVATION 307



Picture 308: OBSERVATION 308



Picture 309: OBSERVATION 309



Picture 310: OBSERVATION 310



Picture 311: OBSERVATION 311



Picture 312: OBSERVATION 312



Picture 313: OBSERVATION 313



Picture 314: OBSERVATION 314



Picture 315: OBSERVATION 315



Picture 316: OBSERVATION 316



Picture 317: OBSERVATION 317



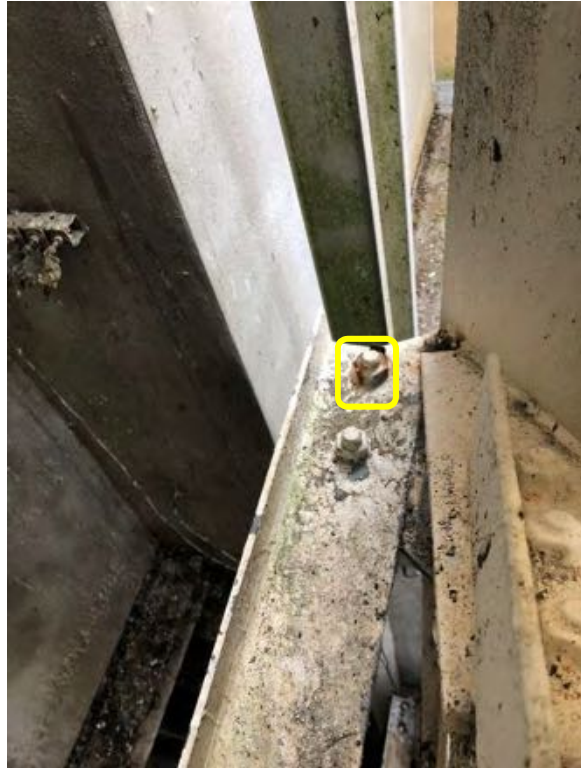
Picture 318: OBSERVATION 318



Picture 319: OBSERVATION 319



Picture 320: OBSERVATION 320



Picture 321: OBSERVATION 321



Picture 322: OBSERVATION 322



Picture 323: OBSERVATION 323



Picture 324: OBSERVATION 324



Picture 325: OBSERVATION 325



Picture 326: OBSERVATION 326



Picture 327: OBSERVATION 327



Picture 328: OBSERVATION 328



Picture 329: OBSERVATION 329



Picture 330: OBSERVATION 330



Picture 331: OBSERVATION 331



Picture 332: OBSERVATION 332



Picture 333: OBSERVATION 333



Picture 334: OBSERVATION 334



Picture 335: OBSERVATION 335



Picture 336: OBSERVATION 336

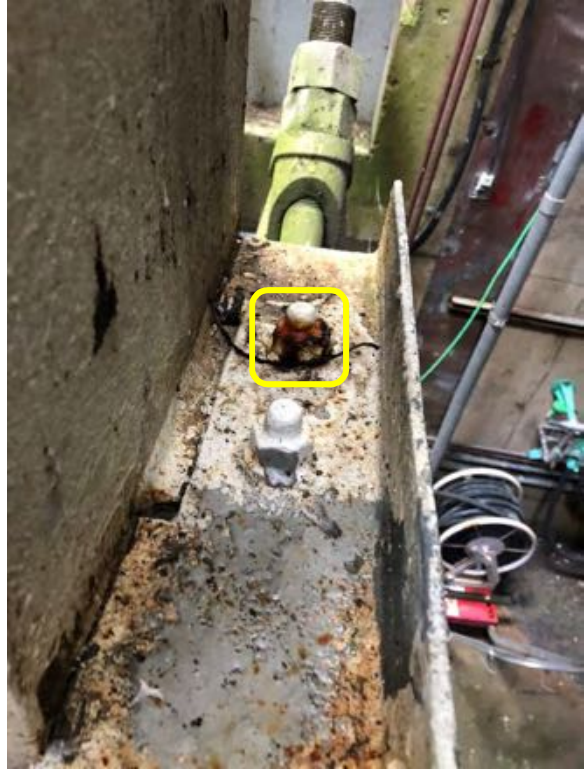




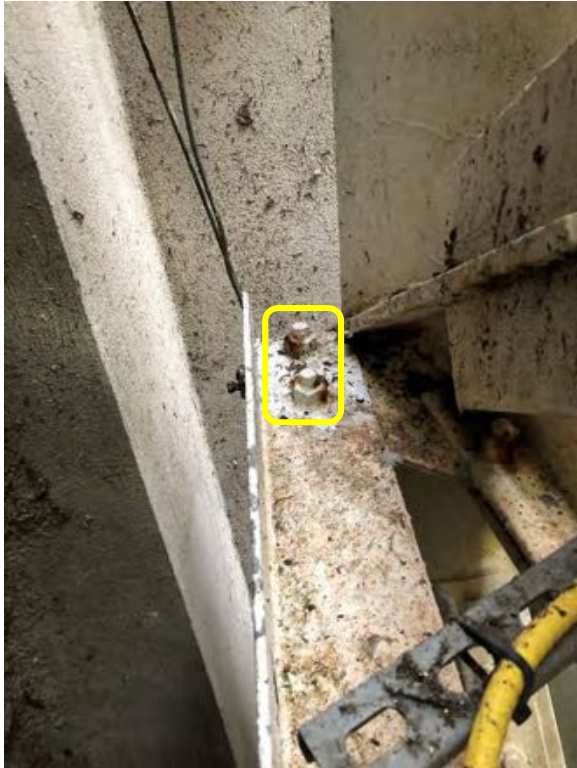
Picture 337: OBSERVATION 337



Picture 338: OBSERVATION 338



Picture 339: OBSERVATION 339



Picture 340: OBSERVATION 340



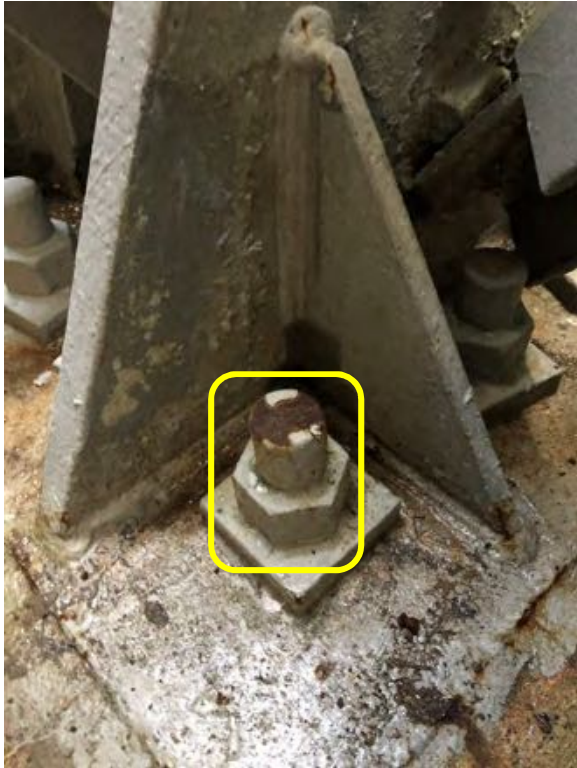
Picture 341: OBSERVATION 341



Picture 342: OBSERVATION 342



Picture 343: OBSERVATION 343



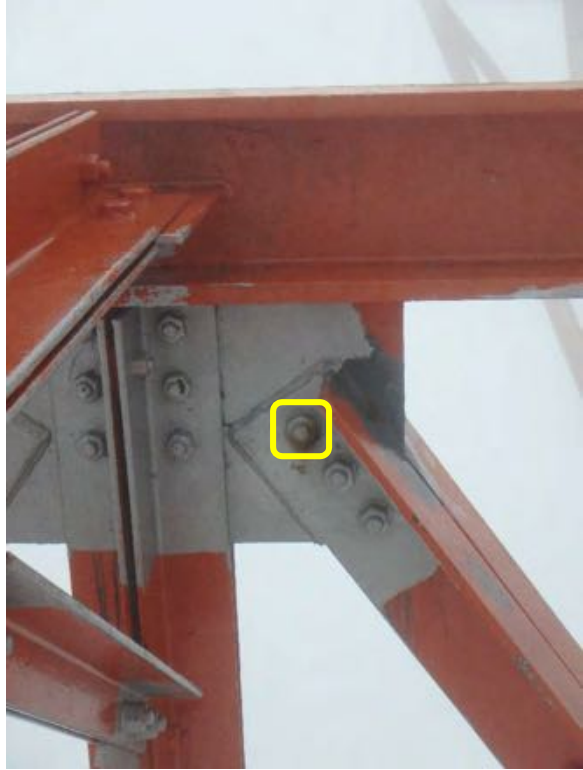
Picture 344: OBSERVATION 344



Picture 345: OBSERVATION 345



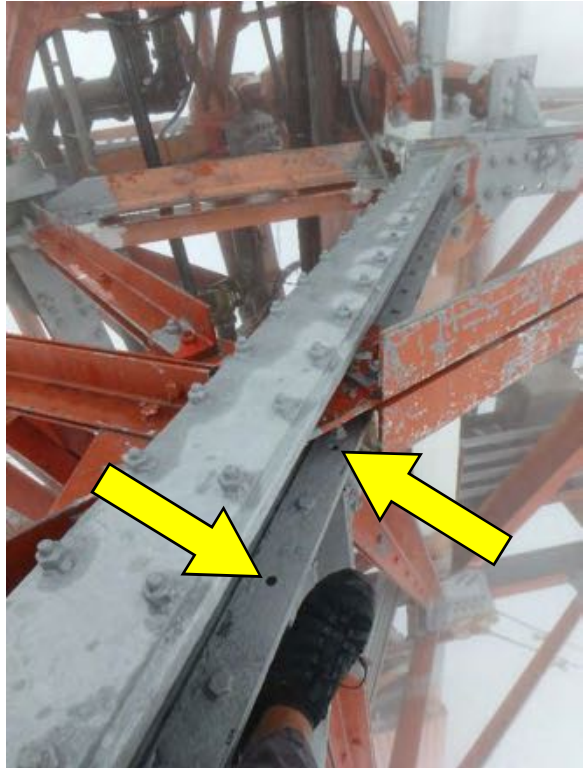
Picture 346: OBSERVATION 346



Picture 347: OBSERVATION 347



Picture 348: OBSERVATION 348



Picture 349: OBSERVATION 349



Picture 350: OBSERVATION 350



Picture 351: OBSERVATION 351



Picture 352: OBSERVATION 352



Picture 353: OBSERVATION 353



Picture 354: OBSERVATION 354



Picture 355: OBSERVATION 355



Picture 356: OBSERVATION 356



Picture 357: OBSERVATION 357



Picture 358: OBSERVATION 358



Picture 359: OBSERVATION 359



Picture 360: OBSERVATION 360



Picture 361: OBSERVATION 361



Picture 362: OBSERVATION 362



Picture 363: OBSERVATION 363



Picture 364: OBSERVATION 364



Picture 365: OBSERVATION 365



Picture 366: OBSERVATION 366



Picture 367: OBSERVATION 367

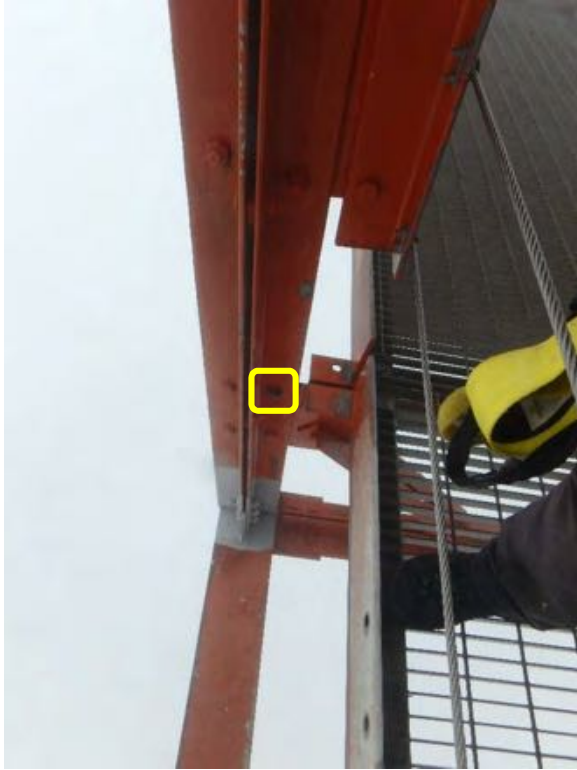


Picture 368: OBSERVATION 368





Picture 369: OBSERVATION 369



Picture 370: OBSERVATION 370



Picture 371: OBSERVATION 371



Picture 372: OBSERVATION 372



Picture 373: OBSERVATION 373



Picture 374: OBSERVATION 374



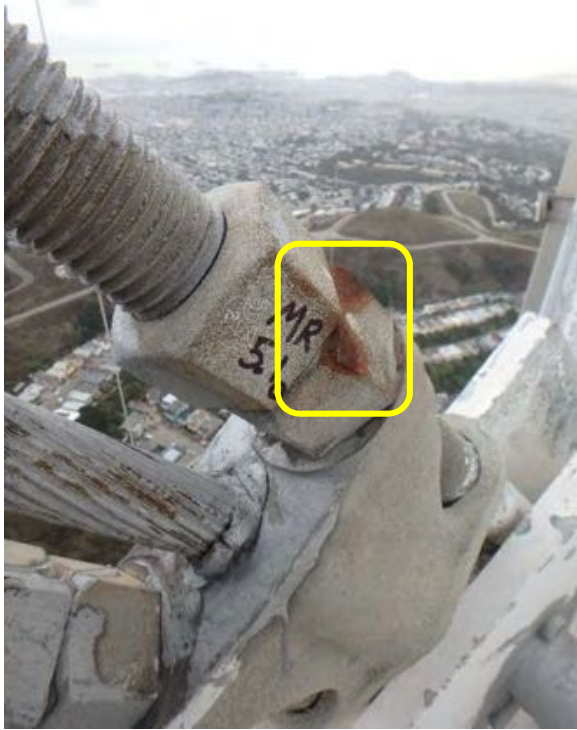
Picture 375: OBSERVATION 375



Picture 376: OBSERVATION 376



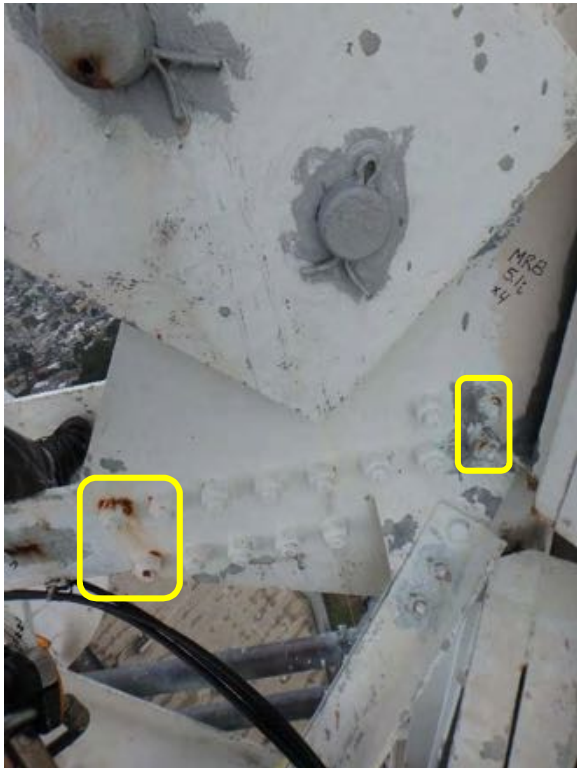
Picture 377: OBSERVATION 377



Picture 378: OBSERVATION 378



Picture 379: OBSERVATION 379



Picture 380: OBSERVATION 380



Picture 381: OBSERVATION 381



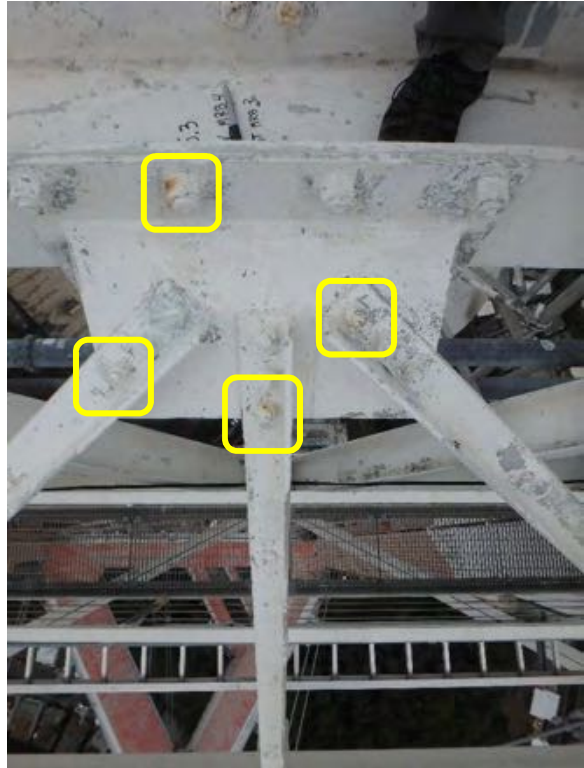
Picture 382: OBSERVATION 382



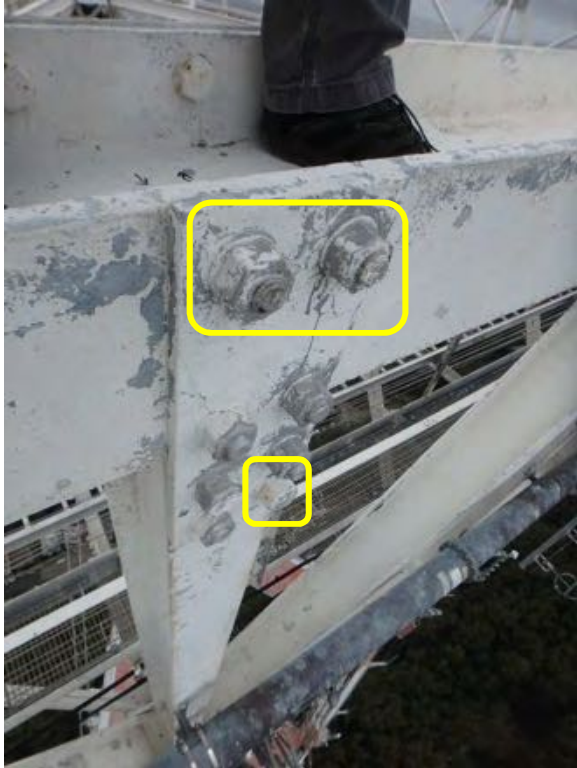
Picture 383: OBSERVATION 383



Picture 384: OBSERVATION 384



Picture 385: OBSERVATION 385



Picture 386: OBSERVATION 386



Picture 387: OBSERVATION 387



Picture 388: OBSERVATION 388



Picture 389: OBSERVATION 389



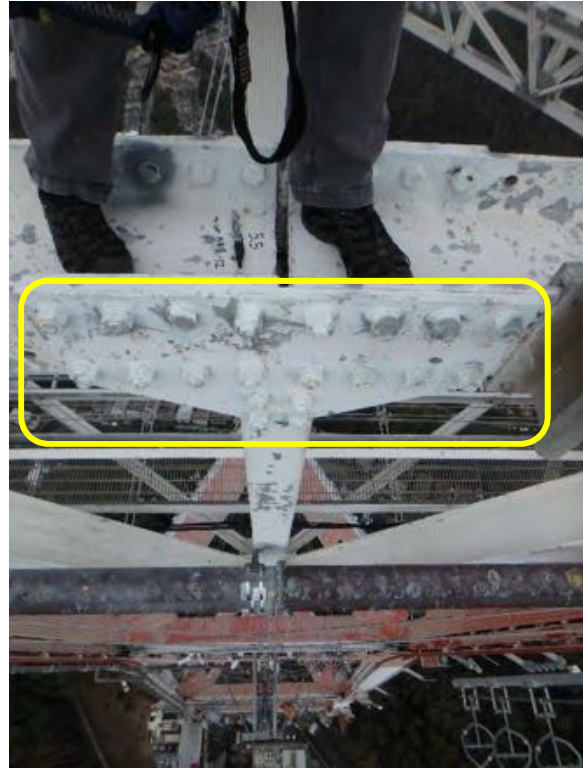
Picture 390: OBSERVATION 390



Picture 391: OBSERVATION 391



Picture 392: OBSERVATION 392



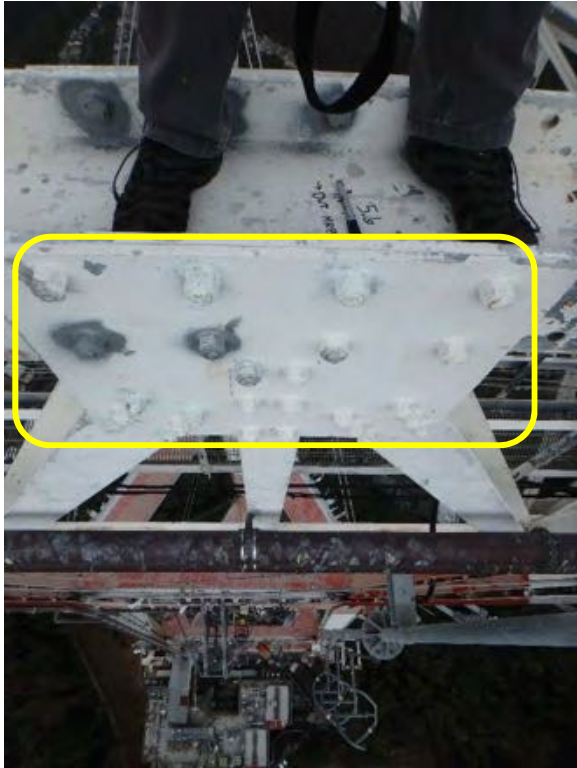
Picture 393: OBSERVATION 393



Picture 394: OBSERVATION 394



Picture 395: OBSERVATION 395



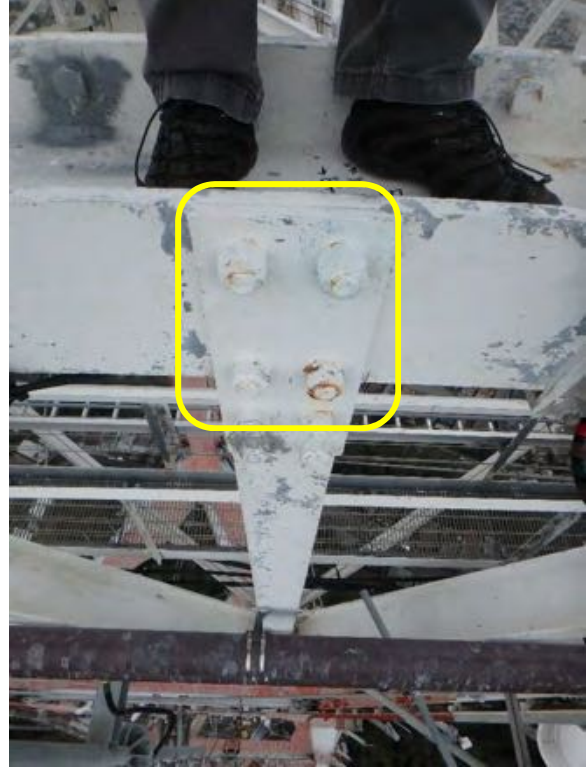
Picture 396: OBSERVATION 396



Picture 397: OBSERVATION 397



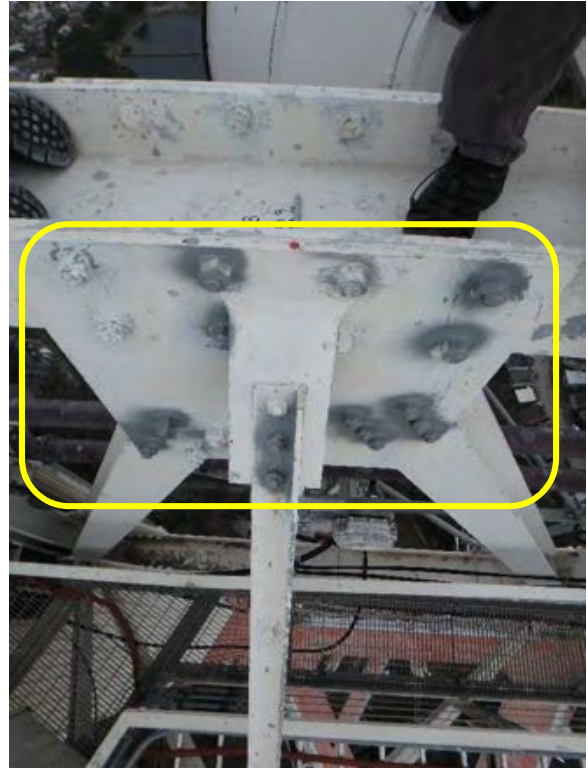
Picture 398: OBSERVATION 398



Picture 399: OBSERVATION 399



Picture 400: OBSERVATION 400





Picture 401: OBSERVATION 401



Picture 402: OBSERVATION 402



Picture 403: OBSERVATION 403



Picture 404: OBSERVATION 404



Picture 405: OBSERVATION 405



Picture 406: OBSERVATION 406



Picture 407: OBSERVATION 407



Picture 408: OBSERVATION 408



Picture 409: OBSERVATION 409



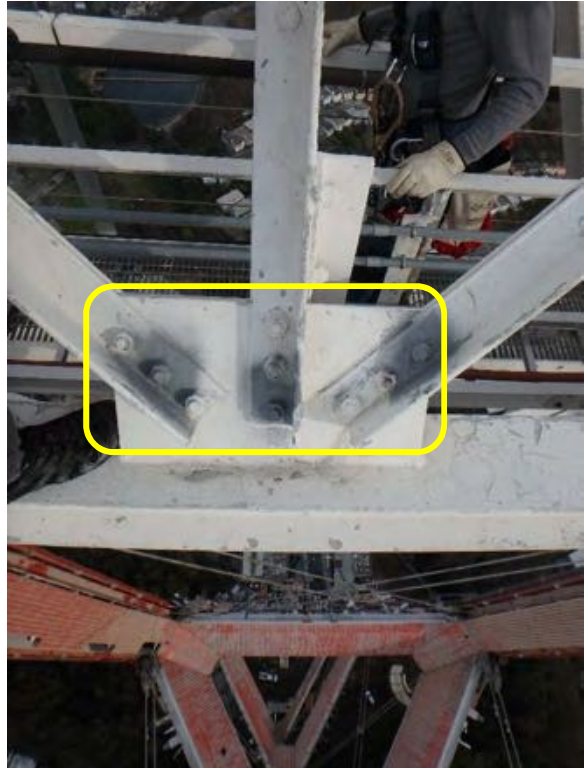
Picture 410: OBSERVATION 410



Picture 411: OBSERVATION 411



Picture 412: OBSERVATION 412



Picture 413: OBSERVATION 413



Picture 414: OBSERVATION 414



Picture 415: OBSERVATION 415



Picture 416: OBSERVATION 416



Picture 417: OBSERVATION 417



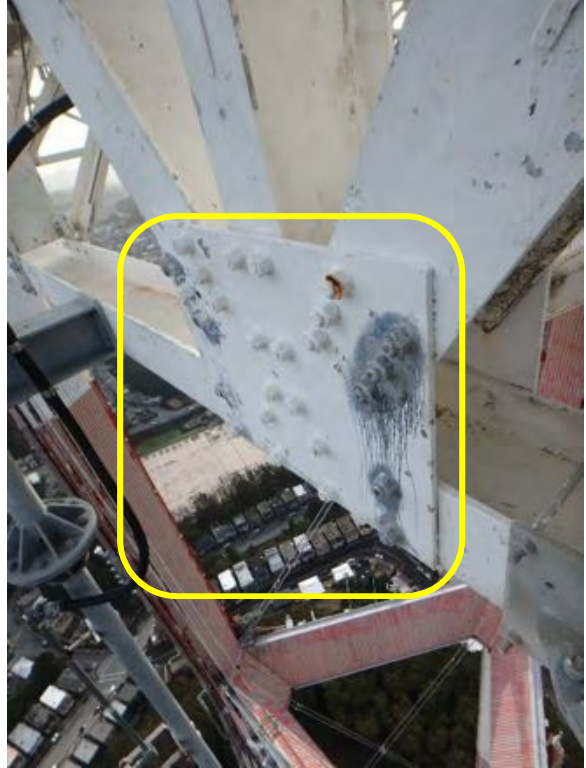
Picture 418: OBSERVATION 418



Picture 419: OBSERVATION 419



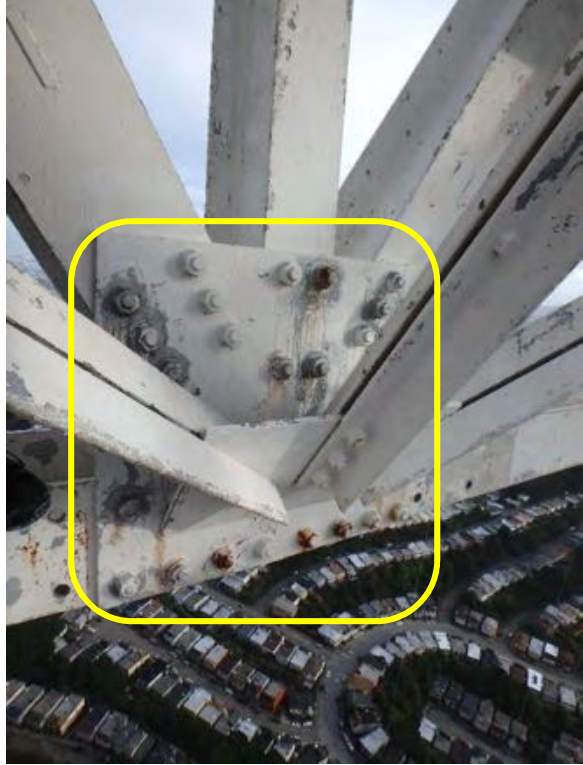
Picture 420: OBSERVATION 420



Picture 421: OBSERVATION 421



Picture 422: OBSERVATION 422



Picture 423: OBSERVATION 423



Picture 424: OBSERVATION 424



Picture 425: OBSERVATION 425



Picture 426: OBSERVATION 426



Picture 427: OBSERVATION 427



Picture 428: OBSERVATION 428



Picture 429: OBSERVATION 429



Picture 430: OBSERVATION 430



Picture 431: OBSERVATION 431



Picture 432: OBSERVATION 432





Picture 433: OBSERVATION 433



Picture 434: OBSERVATION 434



Picture 435: OBSERVATION 435



Picture 436: OBSERVATION 436



Picture 437: OBSERVATION 437

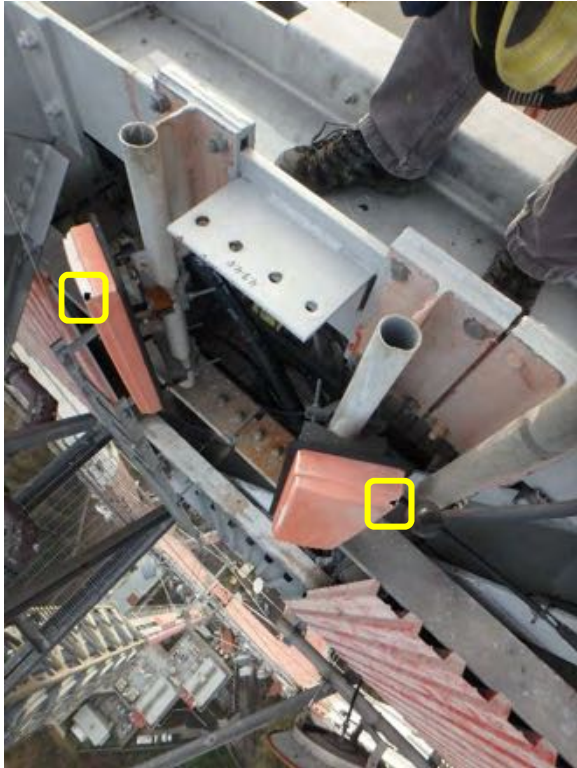


*Minor Rust on Multiple Bolts Throughout Mount*

Picture 438: OBSERVATION 438



Picture 439: OBSERVATION 439



Picture 440: OBSERVATION 440



Picture 441: OBSERVATION 441



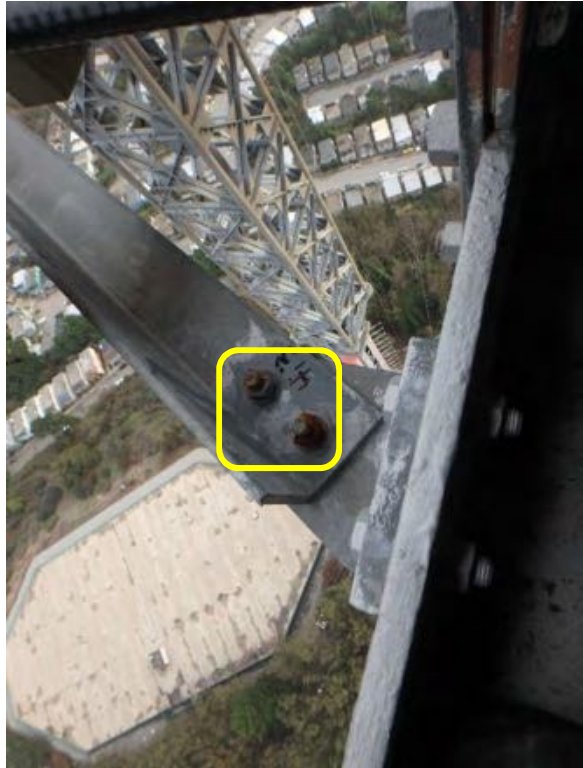
Picture 442: OBSERVATION 442



Picture 443: OBSERVATION 443



Picture 444: OBSERVATION 444



Picture 445: OBSERVATION 445



Picture 446: OBSERVATION 446



Picture 447: OBSERVATION 447



Picture 448: OBSERVATION 448



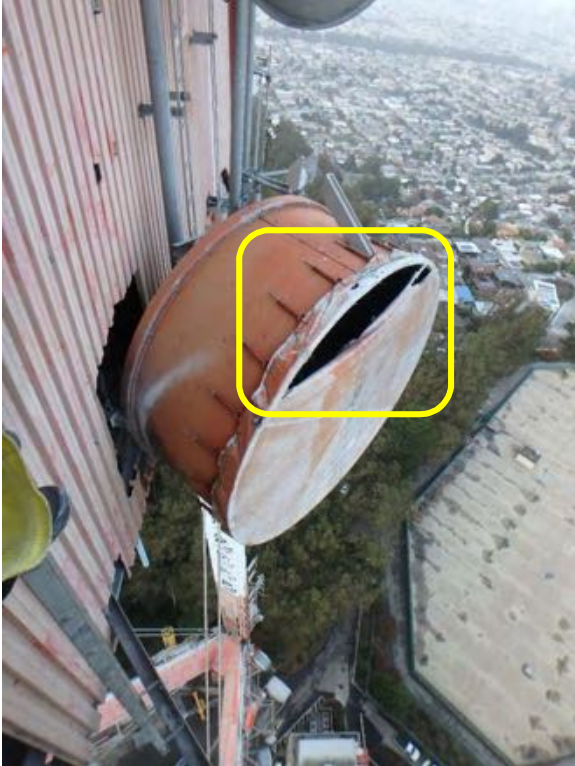
Picture 449: OBSERVATION 449



Picture 450: OBSERVATION 450



Picture 451: OBSERVATION 451



Picture 452: OBSERVATION 452



Picture 453: OBSERVATION 453



Picture 454: OBSERVATION 454



Picture 455: OBSERVATION 455



Picture 456: OBSERVATION 456



Picture 457: OBSERVATION 457



Picture 458: OBSERVATION 458



Picture 459: OBSERVATION 459



Picture 460: OBSERVATION 460



Picture 461: OBSERVATION 461



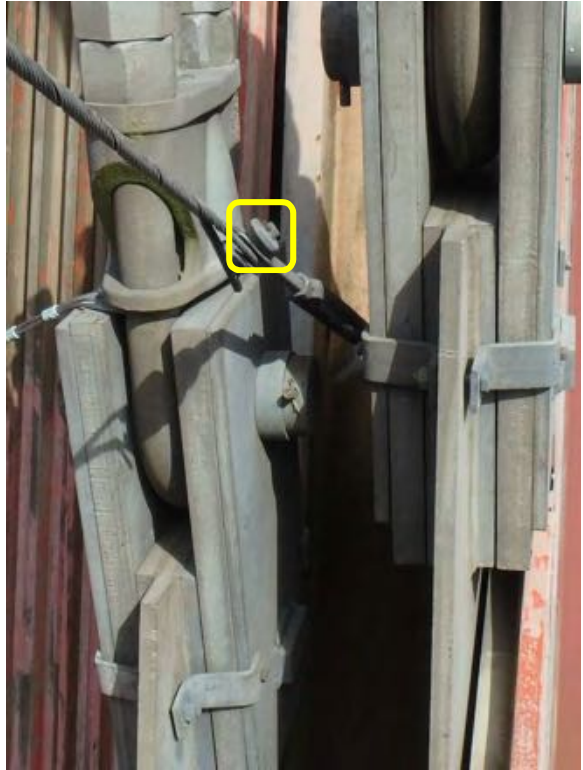
Picture 462: OBSERVATION 462



Picture 463: OBSERVATION 463



Picture 464: OBSERVATION 464





Picture 465: OBSERVATION 465



Picture 466: OBSERVATION 466



Picture 467: OBSERVATION 467



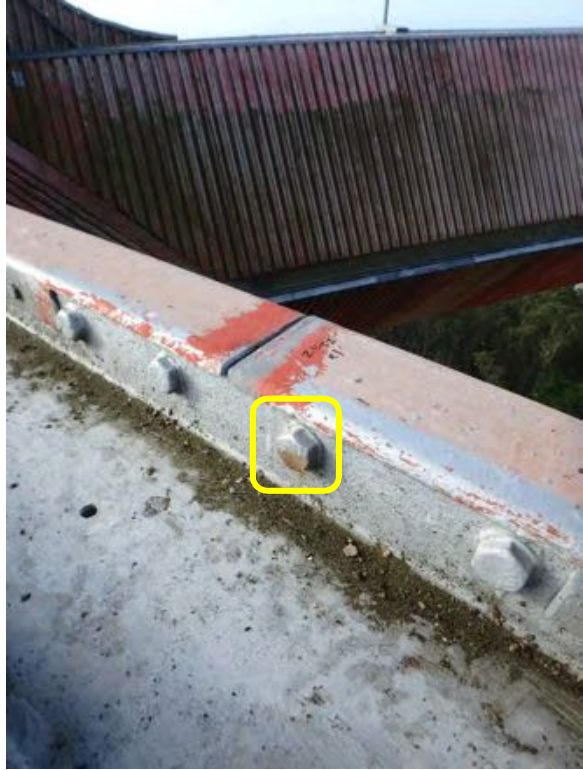
Picture 468: OBSERVATION 468



Picture 469: OBSERVATION 469



Picture 470: OBSERVATION 470



Picture 471: OBSERVATION 471



Picture 472: OBSERVATION 472



Picture 473: OBSERVATION 473



*Minor Rust on Multiple Bolts Throughout Mount*

Picture 474: OBSERVATION 474



Picture 475: OBSERVATION 475



Picture 476: OBSERVATION 476



Picture 477: OBSERVATION 477



Picture 478: OBSERVATION 478



Picture 479: OBSERVATION 479



*Minor Rust on Multiple Bolts Throughout Mount*

Picture 480: OBSERVATION 480



Picture 481: OBSERVATION 481



Picture 482: OBSERVATION 482



Picture 483: OBSERVATION 483



Picture 484: OBSERVATION 484



Picture 485: OBSERVATION 485



Picture 486: OBSERVATION 486



Picture 487: OBSERVATION 487



Picture 488: OBSERVATION 488



Picture 489: OBSERVATION 489



*Minor Rust Throughout Mounts*

Picture 490: OBSERVATION 490



Picture 491: OBSERVATION 491



Picture 492: OBSERVATION 492



Picture 493: OBSERVATION 493



Picture 494: OBSERVATION 494



Picture 495: OBSERVATION 495



Picture 496: OBSERVATION 496

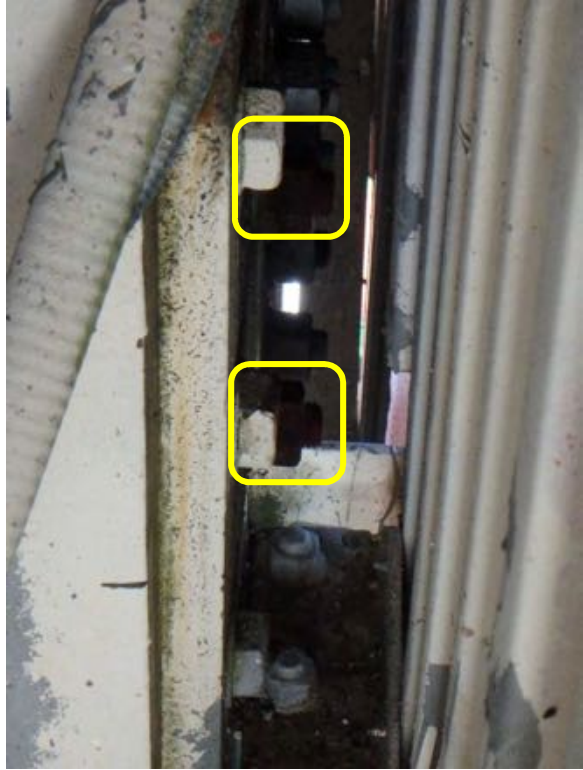




Picture 497: OBSERVATION 497



Picture 498: OBSERVATION 498



Picture 499: OBSERVATION 499



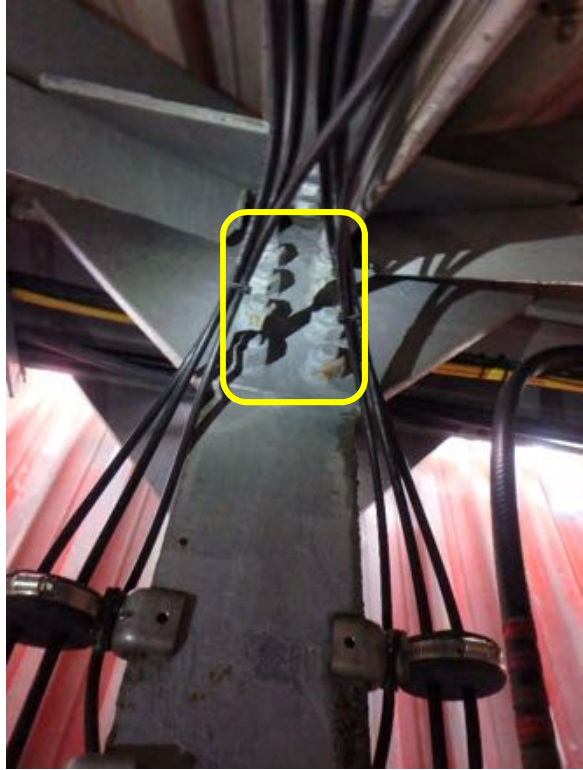
Picture 500: OBSERVATION 500



Picture 501: OBSERVATION 501



Picture 502: OBSERVATION 502



Picture 503: OBSERVATION 503



Picture 504: OBSERVATION 504



Picture 505: OBSERVATION 505



Picture 506: OBSERVATION 506



Picture 507: OBSERVATION 507



Picture 508: OBSERVATION 508



Picture 509: OBSERVATION 509



Picture 510: OBSERVATION 510



Picture 511: OBSERVATION 511



Picture 512: OBSERVATION 512



Picture 513: OBSERVATION 513



Picture 514: OBSERVATION 514



Picture 515: OBSERVATION 515



Picture 516: OBSERVATION 516



Picture 517: OBSERVATION 517



Picture 518: OBSERVATION 518



Picture 519: OBSERVATION 519

