



January 11, 2017

Sutro Tower, Inc.
1 La Avanzada Street
San Francisco, CA 94131-1124

Attention: Mr. Eric Dausman

Re: **Field Evaluation of Existing
977-Foot Self-Support Tower
San Francisco, California
TCI Project Number 16.082.001**

Dear Mr. Dausman,

We are pleased to submit our report on the field observation of the above referenced self-support tower.

Authorization / Purpose:

Tower Consultants Incorporated was retained by Sutro Tower Inc. to conduct a field observation of the 977-foot self-support tower. The inspection work has been performed in accordance with the requirements of the ANSI/TIA-222-G standard.

The purpose of the field observation was to visually evaluate the condition and structural integrity of the tower. A routine inspection was performed of leg C, the south face trusses and strands, the bases and stack C above the 6th level.

The tower is located in San Francisco, California. J. Altmyer, P.E. & Y. Kabatski performed the site observations between July 2016 and August 2016.

Field Observations:

The inspection consisted of a tower climb and visual examination of the tower members, connections, antennas, feed lines and mounting hardware. Only those members that could be seen with binoculars and the naked eye were inspected.

Structural Issues:

The structural beams at levels 2, 3 and 4 were recently cleaned and painted and the structural elements of the tower appear to be in good condition with the exception of the following items:

- There are areas of the tower where rust has formed on the tower member surfaces. Minor to medium rust was seen on tower members and gusset plates between levels 1 and 6. We recommend that these areas be scraped and painted during the next maintenance project.

Tower Consultants, Inc.

- There are two rusted gussets between levels 1 and 2 that will have to be cleaned, evaluated and painted or replaced.
- Many diagonal connections to leg members have drain holes that are plugged causing standing water that will lead to rusted steel. These drain holes should be unplugged and inspected next year to evaluate their condition.
- There are many corroded fasteners throughout the tower height. Inspection and evaluation of the nuts and bolts should be continued in 2016, in accordance with the acceptance criteria specified by Simpson Gumpertz & Heger Inc. If meeting such criteria, they should be painted and then evaluated in the future for additional corrosion. If the nuts or bolts do not meet the acceptance criteria then they should be replaced. Many bolts have been replaced during earlier maintenance projects. Regarding any not painted at time of installation, we recommend painting these bolts to extend the life of the fasteners. There were short bolts seen on level 5 that should be monitored for eventual replacement.
- There are three bent horizontals on the tower in leg C; one between levels 2 and 3, one between levels 4 and 5 and one between levels 5 and 6. These bent horizontal members should be monitored during subsequent inspections for any deformation.
- Two skin support channels have deep cuts and they should be evaluated for adequacy and replaced as necessary. One skin support channel at level 2 had improper holes and two skin support angles had no edge distance for the connection bolt. Those skin support members should be checked for adequacy and replaced as needed.
- There is one loose diagonal double angle stitch bolt between levels 4 and 5 and one loose horizontal double angle stitch bolt between levels 3 and 4. These stitch bolts should be properly tightened during the next maintenance project.

Most of the maintenance work performed in 2016 involved fixing issues associated with the skin panels. The field crew will pick up the remaining work next year during the tower's regular summer maintenance period as directed by and in accordance with recommendations of Simpson, Gumpertz & Heger Inc. There are some beam and skin support connection bolts that are loose or missing at various locations. These beam and skin support connection bolts should be repaired or replaced during the maintenance work performed in 2017.

The strands and guy wires are in good condition; however, minor rust was observed on the guy wire hardware at various levels. A small cotter pin is missing at the leg A base that should be replaced. Some high frequency dampers on the guy strands have broken safety cables that should be repaired.

The tower bases are in good condition with the exception of minor rust on the base steel. The exposed surfaces of the concrete foundation at the tower base are in good condition; however, cracks were seen in the ceiling and floor of the building surrounding the leg C base. This concrete damage should be evaluated by the engineer of record and repaired in accordance with such engineer's recommendation. The tower base is properly grounded; however, some grounding strap bolts are severely rusted and should be replaced.

For detailed information see the attached inspection data sheets and photo logs.

Tower Consultants, Inc.

Non-structural Issues:

The climbing facilities and platforms were secure and appear to be in good condition. The following items were noted:

- A grating bolt is loose between levels 5 and 6.
- A catwalk handrail is missing a bolt on level 3.
- There is one bent handrail between level 4 and 5 and one bent handrail at level 6.
- There is a rusted handrail cable and cable hardware at level 5. The safety cable at level 3 has rusted hardware. Rust was observed on safety cable rail hardware and safety cable at level 6. Rusted hardware was seen on the safety cable rail between levels 5 and 6.
- A handrail cable is missing a U-bolt on level 5.

The tower lighting system appears to be in good condition with some minor exceptions. All of the lighting levels are operational and synchronized. The following items were noted:

- The lighting conduits, junction boxes and conduit hardware are typically rusted throughout the tower height.
- Four junction boxes are missing screws and there is one electrical box between levels 2 and 3 that is missing a cover. Two junction boxes are damaged between levels 2 and 3 and a cable is not properly attached.
- Some conduit connectors are broken.
- There is a damaged electrical cable for a junction box between levels 3 and 4.
- There are broken lights in leg C.

We understand that Sutro Tower Inc. applied last year to the Federal Aviation Administration for approval by such agency to replace the existing lighting system on Sutro Tower. The above referenced items will be satisfactorily addressed at the time any such new system is installed. No urgent or additional maintenance is required in the interim.

The antennas, transmission lines and associated mounting hardware appear to be in good condition with the exception of the following items:

- The rigid line spring hangers have rusted hardware.
- Many bolts are short for two 6" rigid feed lines between levels 5 and 6.
- One rigid line is not supported properly at level 6.
- Some feed lines are loose and have broken supports.
- Three feed lines have damaged jackets; one at level 5, one at level 6 and one above level 6.
- There is a broken support for a conduit between levels 5 and 6 and a conduit is loose between levels 4 and 5.

Tower Consultants, Inc.

- Some antenna mounts have rusted hardware. An antenna mount at level 2 has a loose bolt. Another antenna mount has a loose bolt between levels 2 and 3.

For detailed information see the attached inspection data sheets and photo logs.

All non-structural maintenance work has been referred to Sutro personnel.

Should you have any questions or wish to discuss any aspect of this report, please do not hesitate to contact the undersigned.

Sincerely,

Jeff Altmyer, P.E.
Tower Engineer
Tower Consultants Incorporated

Leg C South Face Inspection Summary – Year 2017

Description of Inspection:

- Routine inspection of Leg C
- Routine inspection of horizontal levels of South Face
- Routine inspection of strands on South Face
- Routine inspection of strand anchors on Leg C
- Routine inspection of base – all legs

Special or In-Depth Inspections: None

Note that a special inspection, as such term is defined in the Tower Standard Conditions recorded against the property on which the tower is located, reviewing work recommended during TCI's 2016 Annual inspection, is the subject of a separate report.

Summary of Results:

The tower is in good condition with the exception of the following: Rusted fasteners, rusted members and some rusted gussets. There are leg gussets that have drain holes that are plugged which retains water. Three horizontals are bent. There are four short bolts on level five and some skin support bolts are loose, short or are missing. Two skin support channels had deep cuts. There are two loose double angle stitch bolts. There is minor rust on the guy wire hardware. A small cotter pin is missing on one guy strand. Two handrails are bent. A grating bolt is loose. A catwalk handrail is missing a bolt. Another handrail cable is missing a U-bolt. Handrail cables are rusted and there is rusted hardware. Conduit and conduit hardware and junction boxes show minor rust. Four junction boxes have missing screws and two are damaged. There are loose, damaged and auxiliary feed lines and conduits. There is rusted antenna mount hardware and feedline hardware.

Summary of Recommendations: See report text.

Checklist:

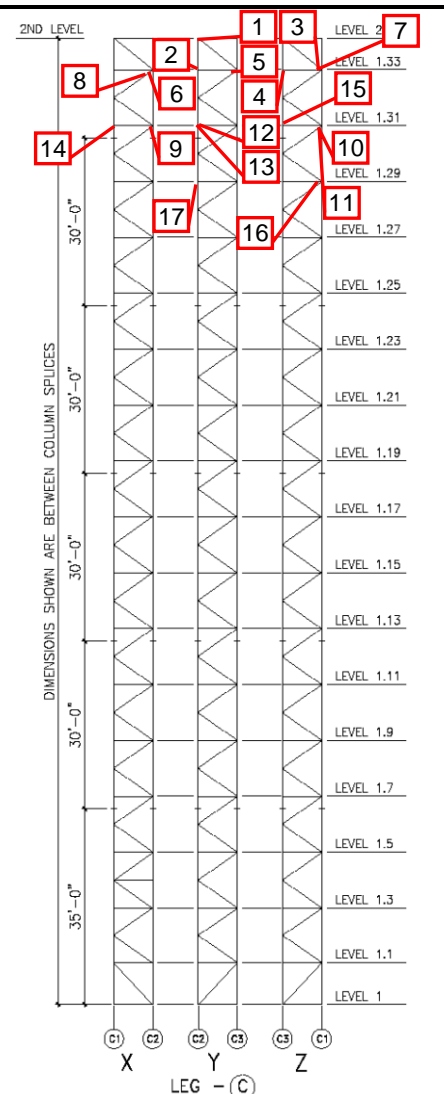
- Has a severe event occurred since the previous inspection? Yes **No**
- Have action items and recommendations from previous inspections been addressed in the scope of work? **Yes** No
- Has the inspection log for future years been revised to account for scope of work and findings of this inspection? **Yes** No

Signature: _____

Date: _1-11-17_____

Inspection Data Sheet: Leg C (Level 1 to Level 2)

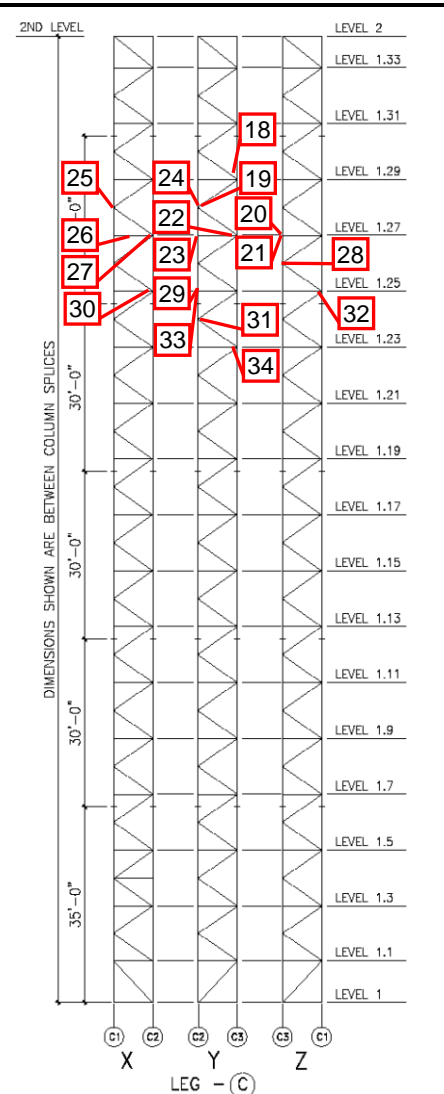
Observ. No.	Location/Identification			Photo No.	Observation Comments
	Column	Elevation	Item ¹		
1	Y-FACE	2	C	1	RF(4)
2	Y-FACE	1.33	C	2	RF(1), SKIN SUPPORT ANGLE BOLT
3	Z-FACE	1.33	C	3	RF(2), SKIN SUPPORT BOLTS AND ONE BOLT IS MISSING
4	Z-FACE	1.33	C	4	RF(1), HORIZONTAL BOLT
5	Y-FACE	1.33	C	5	RUSTED DIAGONAL GUSSET
6	X-FACE	1.33	C	6	RF(1), DIAGONAL BOLT
7	Z-FACE	1.33	C	7	RUST ON TWO GUSSETS
8	X-FACE	1.33	C	8	RUST ON LEG AND GUSSET
9	X-FACE	1.31	L	9	RUST ON LEG
10	Z-FACE	1.31	C	10	ONE LOOSE BEAM CONNECTION BOLT
11	Z-FACE	1.31	C	11	RF(1), DIAGONAL BOLT AND RUST ON GUSSET
12	C2	1.31	C	12	RF(3), LEG BOLTS
13	Y-FACE	1.31	L	13	RUST ON LEG
14	C1	1.31	C	14	RF(4), LEG BOLTS
15	C3	1.31	C	15	RF(3), LEG BOLTS
16	Z-FACE	1.29	C	16	TWO BEAM CONNECTION BOLTS ARE LOOSE
17	Y-FACE	1.29	C	17	RF(1), SKIN SUPPORT ANGLE
Sutro Tower				Signature:	Page: <u> 1 </u> of <u> 8 </u>
San Francisco, CA				File:	Date: 1-11-17



¹ Item designation: L=leg member, D=diagonal, H=horizontal, C=connection, O=others

Inspection Data Sheet: Leg C (Level 1 to Level 2)

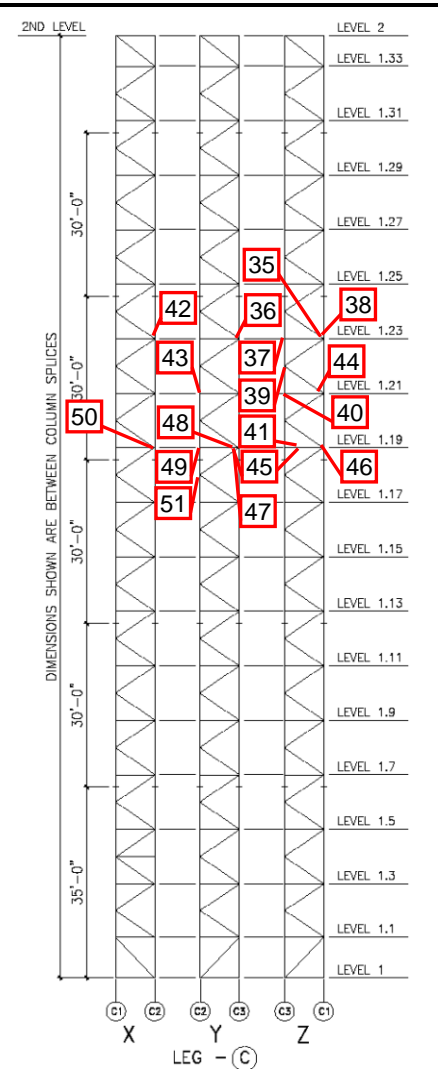
Observ. No.	Location/Identification			Photo No.	Observation Comments
	Column	Elevation	Item ¹		
18	Y-FACE	1.29	C	18	RUST ON GUSSET
19	C2	1.28	L	19	RUST ON LEG
20	Z-FACE	1.27	O	20	CONDUIT HAS RUSTED HARDWARE AND JUNCTION BOX HAS BROKEN CONNECTORS
21	Z-FACE	1.27	C	21	RF(1), HORIZONTAL BOLT
22	Y-FACE	1.27	C	22	RF(1), DIAGONAL BOLT
23	Y-FACE	1.27	C	23	RF(2), SKIN SUPPORT ANGLE BOLT
24	Y-FACE	1.28	C	24	RUST ON DIAGONAL GUSSET
25	X-FACE	1.28	C	25	RUST ON DIAGONAL GUSSET
26	X-FACE	1.27	O	26	TWO SCREWS ARE MISSING FOR JUNCTION BOX CONDUIT
27	X-FACE	1.27	C	27	RF(1), DIAGONAL BOLT
28	Z-FACE	1.26	C	28	RUST ON DIAGONAL GUSSET
29	Y-FACE	1.25	C	29	RF(2), SKIN SUPPORT ANGLE BOLTS
30	C2	1.25	C	30	RF(5), LEG BOLTS
31	Y-FACE	1.24	C	31	RF(1), DIAGONAL BOLT AND RUST ON GUSSET
32	C1	1.25	C	32	RF(5), LEG BOLTS
33	Y-FACE	1.25	C	33	RF(2), SKIN SUPPORT BOLTS AND BOLT IS LOOSE
34	Y-FACE	1.23	C	34	RF(1), DIAGONAL BOLT & RF(1), SKIN SUPPORT ANGLE BOLT
Sutro Tower				Signature: _____	Page: <u> 2 </u> of <u> 8 </u>
San Francisco, CA				File: _____	Date: 1-11-17



¹ Item designation: L=leg member, D=diagonal, H=horizontal, C=connection, O=others

Inspection Data Sheet: Leg C (Level 1 to Level 2)

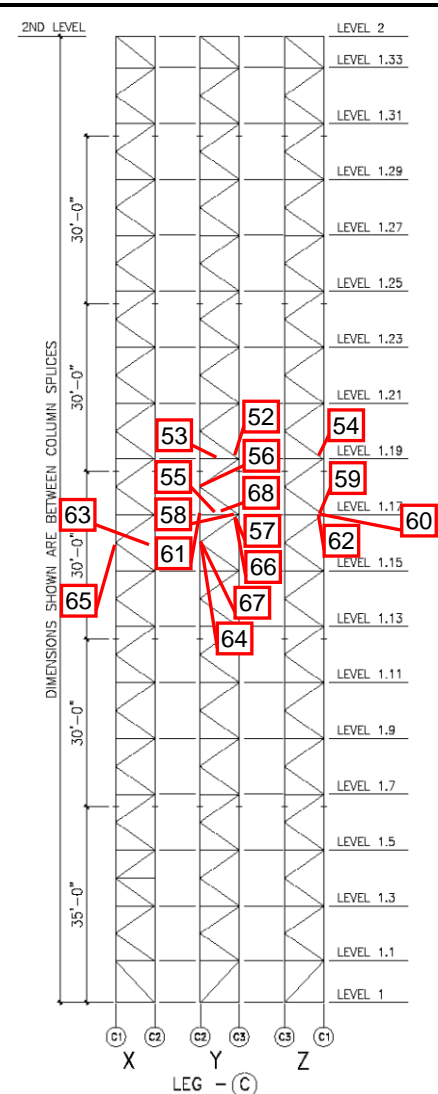
Observ. No.	Location/Identification			Photo No.	Observation Comments
	Column	Elevation	Item ¹		
35	Z-FACE	1.23	C	35	RUST ON HORIZONTAL GUSSET
36	Y-FACE	1.23	C	36	MINOR RUST ON HORIZONTAL AND DIAGONAL GUSSET
37	Z-FACE	1.23	C	37	TWO BOLTS FOR BEAM ARE MISSING NUTS (BOLTS ARE SHORT)
38	Z-FACE	1.23	C	38	RUST ON HORIZONTAL AND DIAGONAL GUSSETS
39	Z-FACE	1.22	C	39	RF(2), DIAGONAL BOLTS
40	Z-FACE	1.21	C	40	RF(1), SKIN SUPPORT ANGLE BOLT
41	Z-FACE	1.19 - 1.25	C	41	BEAM CONNECTION BOLTS HAVE NO NUTS
42	C2	1.23	C	42	TWO CONNECTION BOLTS ARE LOOSE
43	Y-FACE	1.21	C	43	BEAM CONNECTION BOLTS ARE LOOSE
44	Z-FACE	1.21	C	44	RUST ON LEG AND DIAGONAL AND HORIZONTAL GUSSETS
45	Z-FACE & Y-FACE	1.19	C	45	NUTS ARE MISSING FOR BEAM BOLTS
46	Z-FACE	1.19	C	46	RUST ON ALL THREE GUSSETS
47	Y-FACE	1.19	C	47	RF(1), DIAGONAL BOLT
48	Y-FACE	1.19	C	48	RUST ON DIAGONAL AND HORIZONTAL GUSSETS
49	Y-FACE	1.19	C	49	RF(2), SKIN SUPPORT ANGLE BOLTS
50	C2	1.19	C	50	RF(5), LEG BOLTS
51	Y-FACE	1.18	C	51	RUST ON GUSSET
Sutro Tower				Signature: _____	Page: <u>3</u> of <u>8</u>
San Francisco, CA				File: _____	Date: 1-11-17



¹ Item designation: L=leg member, D=diagonal, H=horizontal, C=connection, O=others

Inspection Data Sheet: Leg C (Level 1 to Level 2)

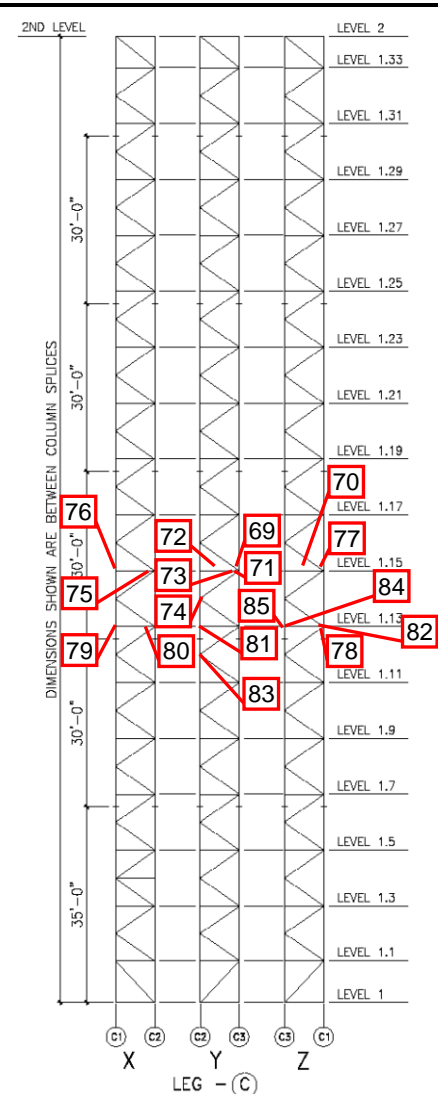
Observ. No.	Location/Identification			Photo No.	Observation Comments
	Column	Elevation	Item ¹		
52	Y-FACE	1.19	C	52	RUST ON HORIZONTAL GUSSET
53	Y-FACE	1.19	C	53	MISSING NUTS FOR BEAM
54	Z-FACE	1.19	C	54	RUST ON SKIN SUPPORT GUSSET
55	Y-FACE	1.17	C	55	ALL BOLTS FOR OUTSIDE BEAMS HAVE NO NUTS
56	C2	1.18	C	56	RUST ON GUSSETS AND RUST ON LEG
57	Y-FACE	1.17	C	57	SEVERE RUST ON GUSSET
58	Y-FACE	1.17	C	58	RF(1), SKIN SUPPORT ANGLE BOLT
59	Z-FACE	1.17	C	59	MINOR RUST ON SKIN SUPPORT ANGLE GUSSET
60	Z-FACE	1.17	C	60	RUST ON GUSSET
61	Y-FACE	1.17	C	61	RUST ON GUSSET
62	Z-FACE	1.17	C	62	RUST ON DIAGONAL GUSSET
63	X-FACE	1.16	L	63	RUST ON LEG
64	Y-FACE	1.16	C	64	RF(1), DIAGONAL MEMBER
65	C1	1.16	L	65	RUST ON LEG
66	Y-FACE	1.17	C	66	RF(1), DIAGONAL BOLT
67	Y-FACE	1.16	C	67	RF(1), DIAGONAL BOLT
68	Y-FACE	1.17	C	68	BEAM BOLTS ARE SHORT WITH NO NUTS
Sutro Tower				Signature: _____	Page: <u>4</u> of <u>8</u>
San Francisco, CA				File: _____	Date: 1-11-17



¹ Item designation: L=leg member, D=diagonal, H=horizontal, C=connection, O=others

Inspection Data Sheet: Leg C (Level 1 to Level 2)

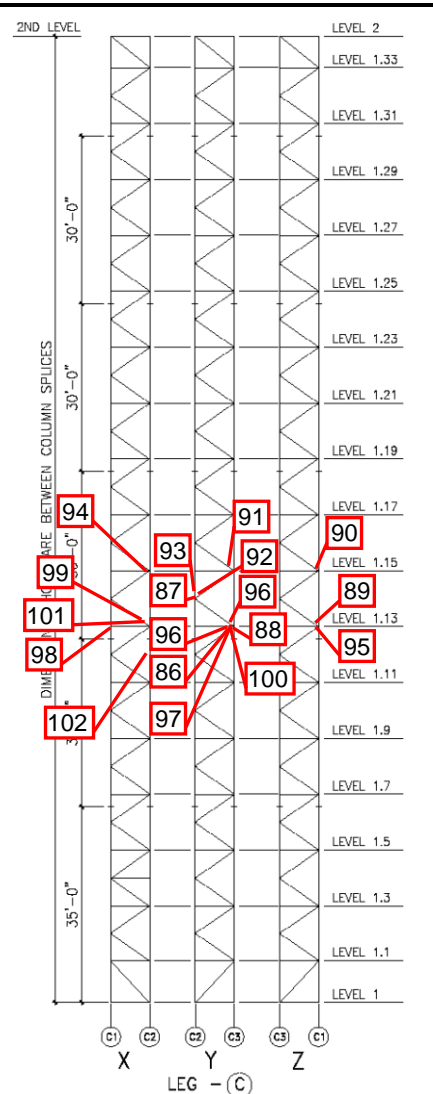
Observ. No.	Location/Identification			Photo No.	Observation Comments
	Column	Elevation	Item ¹		
69	Y-FACE	1.15	C	69	RF(1), SKIN SUPPORT ANGLE BOLT
70	Z-FACE	1.15	C	70	BEAM BOLTS HAVE NO NUTS
71	Y-FACE	1.15	C	71	RUST ON ALL GUSSETS
72	Y-FACE	1.15	O	72	RIGID LINE SUPPORT BRACKETS ARE RUSTED
73	Y-FACE	1.15	C	73	RF(1), DIAGONAL BOLT
74	Y-FACE	1.14	C	74	RUST ON GUSSET
75	X-FACE	1.15	C	75	RF(1), DIAGONAL BOLT
76	C1	1.15	L	76	RUST ON LEG
77	Z-FACE	1.15	C	77	RF(1), DIAGONAL BOLT AND RUST ON GUSSET
78	Z-FACE	1.13	C	78	BEAM BOLTS HAVE NO NUTS
79	X-FACE	1.13	C	79	RUSTED HORIZONTAL GUSSET
80	X-FACE	1.13	C	80	RF(1), DIAGONAL BOLT
81	C2	1.13	C	81	RF(5), LEG BOLTS
82	Z-FACE	1.13	L	82	RUST ON LEG
83	Y-FACE	1.12	C	83	RUST ON GUSSET
84	C3	1.13	C	84	RF(1), LEG BOLTS
85	C3	1.13	L	85	RUST ON LEG
Sutro Tower				Signature: _____	Page: <u>5</u> of <u>8</u>
San Francisco, CA				File: _____	Date: 1-11-17



¹ Item designation: L=leg member, D=diagonal, H=horizontal, C=connection, O=others

Inspection Data Sheet: Leg C (Level 1 to Level 2)

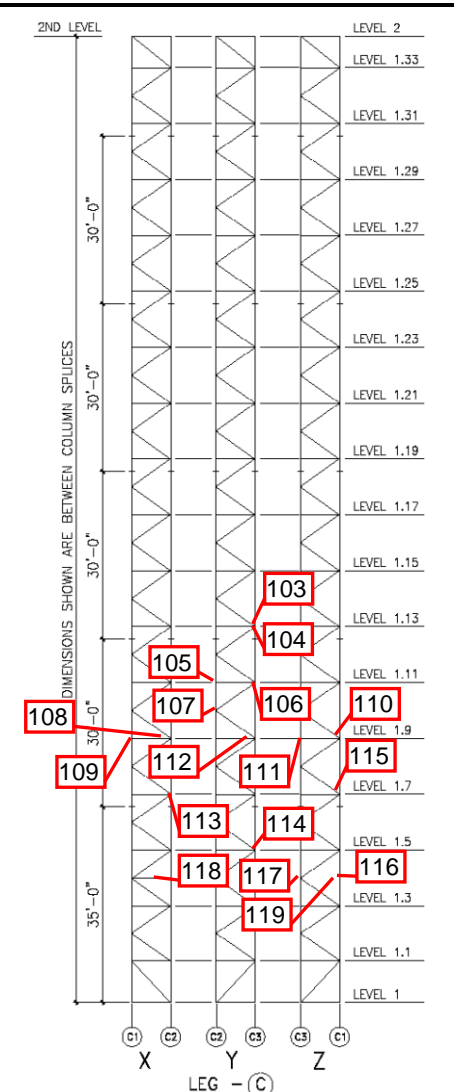
Observ. No.	Location/Identification			Photo No.	Observation Comments
	Column	Elevation	Item ¹		
86	Y-FACE	1.13	C	86	RUST ON HORIZONTAL GUSSET
87	Y-FACE	1.14	C	87	RF(1), DIAGONAL BOLT
88	Y-FACE	1.13	C	88	RF(1), SKIN SUPPORT ANGLE
89	Z-FACE	1.13	L	89	RUST ON LEG
90	Z-FACE	1.15	C	90	RF(1), DIAGONAL BOLT
91	Y-FACE	1.15	C	91	RUST ON HORIZONTAL GUSSET PLATE
92	Y-FACE	1.14	C	92	RF(1), DIAGONAL BOLT
93	Y-FACE	1.14	C	93	MINOR RUST ON TWO DIAGONAL GUSSETS
94	X-FACE	1.15	C	94	RF(1), DIAGONAL BOLT
95	Z-FACE	1.13	L	95	RUST ON LEG
96	C3	1.13	L	96	RUST ON LEG
97	Y-FACE	1.13	C	97	RUST ON DIAGONAL GUSSET
98	X-FACE	1.13	C	98	RUST ON HORIZONTAL GUSSET
99	X-FACE	1.13	C	99	RF(1), DIAGONAL BOLT
100	Y-FACE	1.13	C	100	SEVERE RUST ON HORIZONTAL GUSSET
101	C2	1.13	C	101	RF(4), LEG BOLTS
102	C2	1.12	C	102	RUST ON LEG AND GUSSET
<i>Sutro Tower</i>				Signature: _____	Page: <u>6</u> of <u>8</u>
<i>San Francisco, CA</i>				File: _____	Date: 1-11-17



¹ Item designation: L=leg member, D=diagonal, H=horizontal, C=connection, O=others

Inspection Data Sheet: Leg C (Level 1 to Level 2)

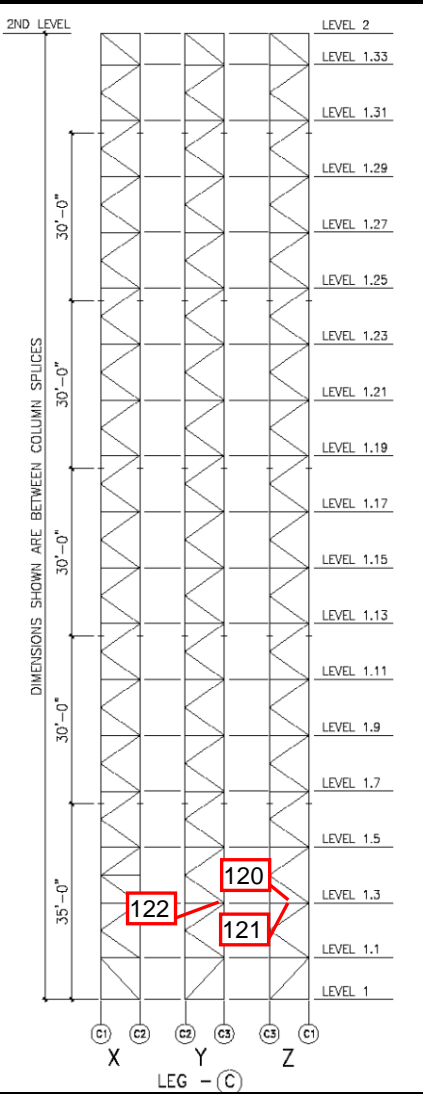
Observ. No.	Location/Identification			Photo No.	Observation Comments
	Column	Elevation	Item ¹		
103	C3	1.13	L	103	RUST ON LEG
104	C3	1.13	C	104	RF(1), LEG BOLT
105	Y-FACE	1.11	C	105	RUST ON HORIZONTAL GUSSET
106	Y-FACE	1.11	C	106	RF(3), DIAGONAL BOLTS AND RUST ON GUSSET
107	Y-FACE	1.10	C	107	RF(1), DIAGONAL BOLT
108	X-FACE	1.9	C	108	GUSSET HAS DRAIN HOLE PLUGGED BY PAINT
109	C1	1.9	L	109	RUST ON LEG
110	Z-FACE	1.9	C	110	RF(1), SKIN SUPPORT ANGLE BOLT
111	C3	1.9	L	111	RUST ON LEG
112	Y-FACE	1.9	C	112	RF(1), HORIZONTAL BOLT AND RUST ON GUSSET
113	X-FACE	1.7	C	113	WATER PONDING IN GUSSET
114	Y-FACE	1.5	C	114	RF(2), SKIN SUPPORT ANGLE
115	Z-FACE	1.7	C	115	RUST ON GUSSET
116	Z-FACE	1.4	C	116	ONE BEAM CONNECTION BOLT IS MISSING
117	Z-FACE	1.4	C	117	RF(1), SKIN SUPPORT BOLT
118	X-FACE	1.4	O	118	JUNCTION BOX IS MISSING TWO SCREWS
119	Z-FACE	1.4	L	119	RUST ON LEG
<i>Sutro Tower</i>				Signature: _____	Page: <u>7</u> of <u>8</u>
<i>San Francisco, CA</i>				File: _____	Date: 1-11-17



¹ Item designation: L=leg member, D=diagonal, H=horizontal, C=connection, O=others

Inspection Data Sheet: Leg C (Level 1 to Level 2)

Observ. No.	Location/Identification			Photo No.	Observation Comments
	Column	Elevation	Item ¹		
120	Z-FACE	1.3	C	120	SHORT BEAM CONNECTION BOLTS
121	Z-FACE	1.3	H	121	RUST ON SKIN SUPPORT ANGLE
122	Y-FACE	1.3	C	122	RUST ON HORIZONTAL GUSSET
<i>Sutro Tower</i>				Signature:	Page: <u> 8 </u> of <u> 8 </u>
<i>San Francisco, CA</i>				File:	Date: 1-11-17



¹ Item designation: L=leg member, D=diagonal, H=horizontal, C=connection, O=others



Photo 1.JPG
8/9/2016



Photo 2.JPG
8/9/2016



Photo 3.JPG
8/9/2016



Photo 4.JPG
8/9/2016

Leg C (Level 1 to Level 2)



Photo 5.JPG
8/9/2016



Photo 6.JPG
8/9/2016



Photo 7.JPG
8/9/2016



Photo 8.JPG
8/9/2016



Photo 9.JPG
8/9/2016

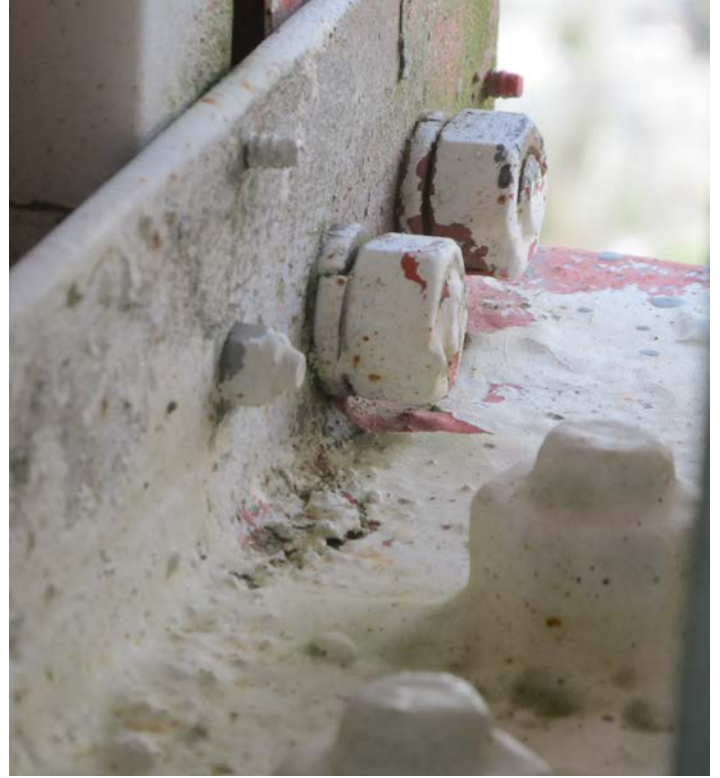


Photo 10.JPG
8/9/2016



Photo 11.JPG
8/9/2016

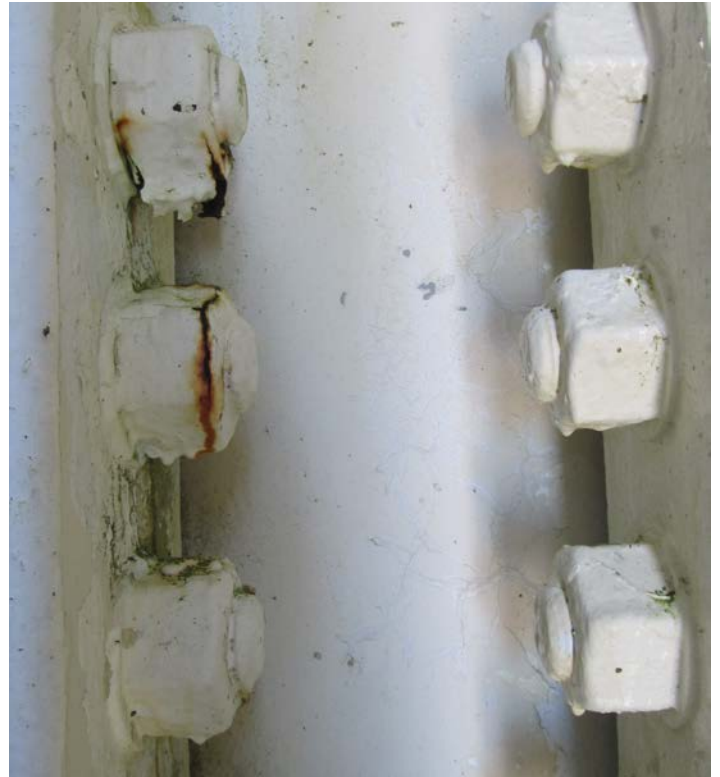


Photo 12.JPG
8/9/2016



Photo 13.JPG
8/9/2016



Photo 14.JPG
8/9/2016



Photo 15.JPG
8/9/2016



Photo 16.JPG
8/9/2016



Photo 17.JPG
8/9/2016



Photo 18.JPG
8/9/2016



Photo 19.JPG
8/9/2016



Photo 20.JPG
8/9/2016



Photo 21.JPG
8/9/2016



Photo 22.JPG
8/9/2016



Photo 23.JPG
8/9/2016



Photo 24.JPG
8/9/2016



Photo 25.JPG
8/9/2016



Photo 26.JPG
8/9/2016



Photo 27.JPG
8/9/2016



Photo 28.JPG
8/9/2016



Photo 29.JPG
8/9/2016



Photo 30.JPG
8/9/2016



Photo 31.JPG
8/9/2016



Photo 32.JPG
8/9/2016



Photo 33.JPG
8/9/2016



Photo 34.JPG
8/9/2016



Photo 35.JPG
8/9/2016



Photo 36.JPG
8/9/2016



Photo 37.JPG
8/9/2016



Photo 38.JPG
8/9/2016



Photo 39.JPG
8/9/2016



Photo 40.JPG
8/9/2016



Photo 41.JPG
8/9/2016



Photo 42.JPG
8/9/2016



Photo 43.JPG
8/8/2016

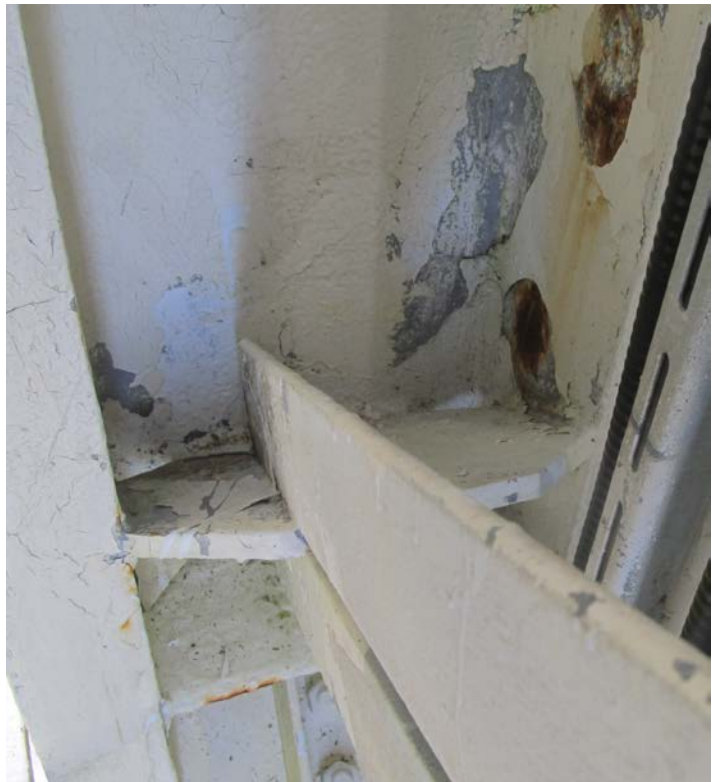


Photo 44.JPG
8/8/2016



Photo 45.JPG
8/9/2016



Photo 46.JPG
8/9/2016



Photo 47.JPG
8/9/2016



Photo 48.JPG
8/9/2016



Photo 49.JPG
8/9/2016



Photo 50.JPG
8/9/2016



Photo 51.JPG
8/9/2016



Photo 52.JPG
8/9/2016



Photo 53.JPG
8/9/2016

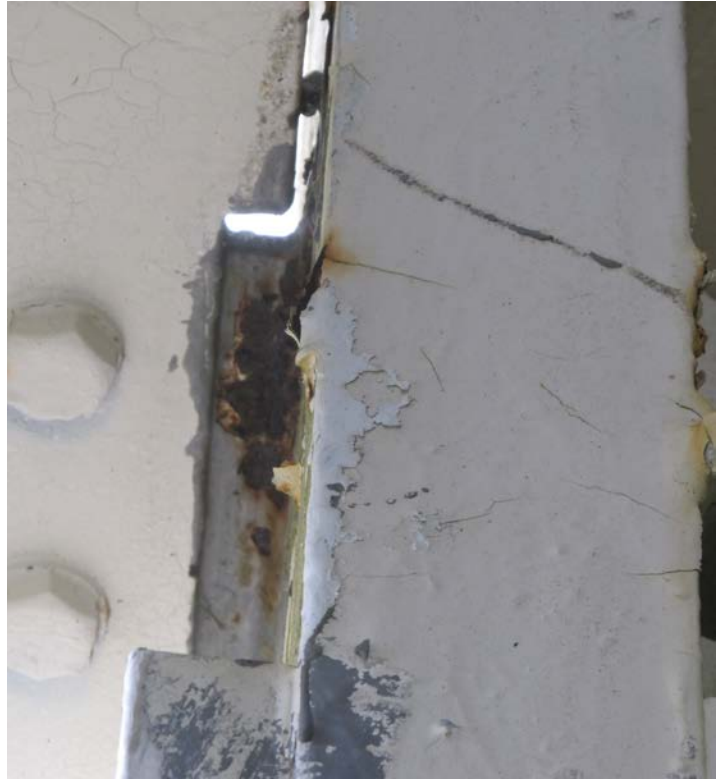


Photo 54.JPG
8/9/2016



Photo 55.JPG
8/9/2016



Photo 56.JPG
8/9/2016



Photo 57.JPG
8/9/2016



Photo 58.JPG
8/9/2016



Photo 59.JPG
8/9/2016



Photo 60.JPG
8/9/2016



Photo 61.JPG
8/9/2016



Photo 62.JPG
8/9/2016



Photo 63.JPG
8/9/2016



Photo 64.JPG
8/9/2016



Photo 65.JPG
8/9/2016



Photo 66.JPG
8/9/2016



Photo 67.JPG
8/9/2016



Photo 68.JPG
8/9/2016



Photo 69.JPG
8/9/2016



Photo 70.JPG
8/9/2016



Photo 71.JPG
8/9/2016



Photo 72.JPG
8/9/2016



Photo 73.JPG
8/9/2016



Photo 74.JPG
8/9/2016



Photo 75.JPG
8/9/2016



Photo 76.JPG
8/9/2016



Photo 77.JPG
8/9/2016



Photo 78.JPG
8/9/2016



Photo 79.JPG
8/9/2016



Photo 80.JPG
8/9/2016



Photo 81.JPG
8/9/2016



Photo 82.JPG
8/9/2016



Photo 83.JPG
8/9/2016



Photo 84.JPG
8/9/2016



Photo 85.JPG
8/9/2016



Photo 86.JPG
8/9/2016



Photo 87.JPG
8/10/2016



Photo 88.JPG
8/10/2016

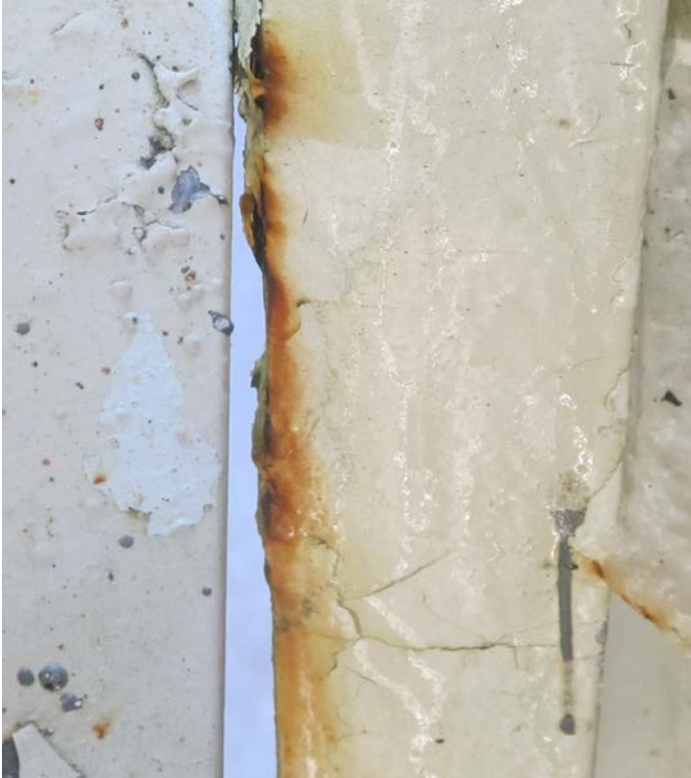


Photo 89.JPG
8/10/2016



Photo 90.JPG
8/10/2016



Photo 91.JPG
8/10/2016



Photo 92.JPG
8/10/2016



Photo 93.JPG
8/10/2016



Photo 94.JPG
8/10/2016



Photo 95.JPG
8/10/2016



Photo 96.JPG
8/10/2016



Photo 97.JPG
8/10/2016



Photo 98.JPG
8/10/2016



Photo 99.JPG
8/10/2016



Photo 100.JPG
8/10/2016



Photo 101.JPG
8/10/2016



Photo 102.JPG
8/10/2016



Photo 103.JPG
8/10/2016



Photo 104.JPG
8/10/2016



Photo 105.JPG
8/10/2016



Photo 106.JPG
8/10/2016



Photo 107.JPG
8/10/2016



Photo 108.JPG
8/10/2016



Photo 109.JPG
8/10/2016



Photo 110.JPG
8/10/2016



Photo 111.JPG
8/10/2016



Photo 112.JPG
8/10/2016



Photo 113.JPG
8/10/2016



Photo 114.JPG
8/10/2016



Photo 115.JPG
8/10/2016



Photo 116.JPG
8/10/2016



Photo 117.JPG
8/10/2016



Photo 118.JPG
8/10/2016



Photo 119.JPG
8/10/2016



Photo 120.JPG
8/10/2016



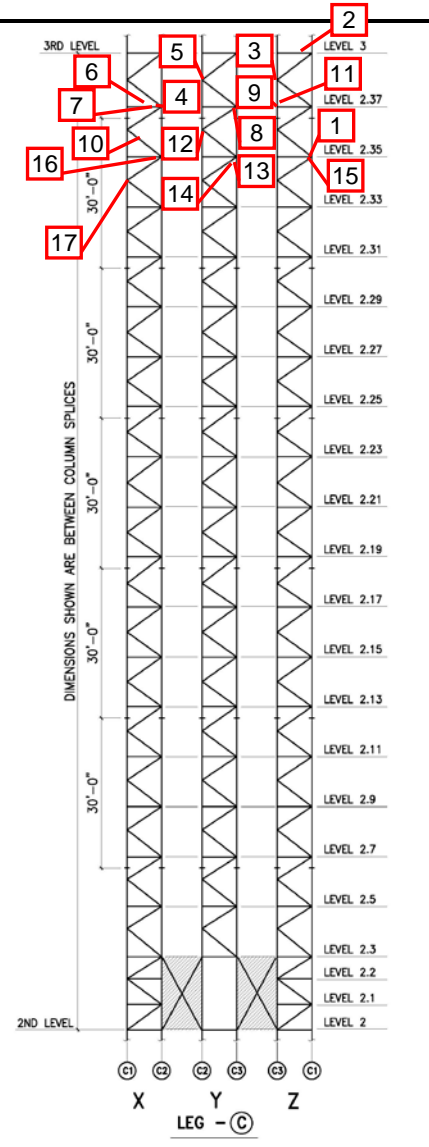
Photo 121.JPG
8/10/2016



Photo 122.JPG
8/10/2016

Inspection Data Sheet: Leg C (Level 2 to Level 3)

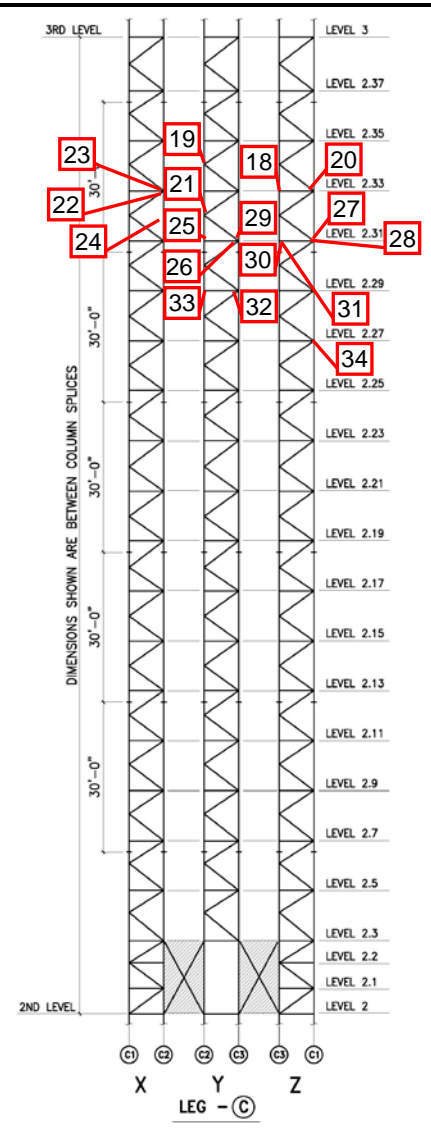
Observ. No.	Location/Identification			Photo No.	Observation Comments
	Column	Elevation	Item ¹		
1	C1	2.35	C	1	RF(9), LEG BOLTS
2	Z-FACE	3	O	2	FOUR AUXILIARY FEEDLINES
3	C3	2.38	L	3	RUST ON LEG
4	C2	2.37	C	4	RF(12)
5	Y-FACE	2.38	C	5	RUST ON DIAGONAL GUSSET PLATE
6	X-FACE	2.37	C	6	BOTH HORIZONTAL GUSSETS ARE RUSTED
7	X-FACE	2.37	C	7	RF(1), DIAGONAL BOLT
8	Y-FACE	2.37	C	8	RUSTED DIAGONAL GUSSET
9	C3	2.37	L	9	RUST ON TOWER LEG
10	X-FACE	2.36	O	10	BROKEN LIGHT
11	C3	2.37	C	11	RF(2), LEG BOLTS
12	Y-FACE	2.36	C	12	GUSSET SHOWS SIGN OF RUST
13	Y-FACE	2.35	C	13	DIAGONAL GUSSET IS RUSTED
14	Y-FACE	2.35	C	14	RF(1), HORIZONTAL BOLT
15	Z-FACE	2.35	C	15	MINOR RUST ON DIAGONAL GUSSET PLATES
16	X-FACE	2.35	C	16	RF(1), HORIZONTAL BOLT
17	X-FACE	2.34	O	17	RUST ON JUNCTION BOXES AND HARDWARE
Sutro Tower				Signature: _____	Page: <u> 1 </u> of <u> 7 </u>
San Francisco, CA				File: _____	Date: 1-11-17



¹ Item designation: L=leg member, D=diagonal, H=horizontal, C=connection, O=others

Inspection Data Sheet: Leg C (Level 2 to Level 3)

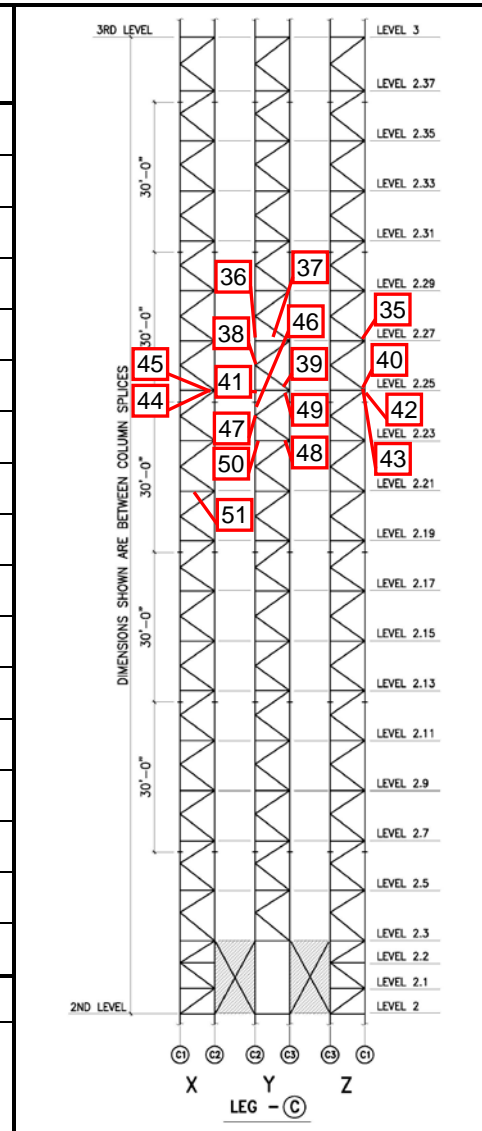
Observ. No.	Location/Identification			Photo No.	Observation Comments
	Column	Elevation	Item ¹		
18	Z-FACE	2.33	C	18	RF(1), SKIN SUPPORT ANGLE BOLT
19	C2	2.33 - 2.35	L	19	RUST ON LEG
20	Z-FACE	2.33	C	20	ALL THREE GUSSETS SHOW MINOR RUST
21	Y-FACE	2.31 - 2.33	L	21	RUST ON LEG
22	X-FACE	2.33	O	22	RUSTED 3" RIGID LINE SUPPORT HARDWARE
23	X-FACE	2.33	C	23	MEDIUM RUST ON HORIZONTAL GUSSET PLATE
24	C2	2.31 - 2.33	L	24	RUST ON LEG
25	C2	2.31	C	25	RF(12), LEG BOLTS
26	C3	2.31	C	26	RF(3), LEG BOLTS
27	Z-FACE	2.31	C	27	MINOR RUST ON DIAGONAL GUSSETS
28	Z-FACE	2.31	C	28	RF(1), HORIZONTAL BOLT
29	Y-FACE	2.31	C	29	RUST ON HORIZONTAL GUSSET
30	C3	2.31	C	30	RF(3), LEG BOLTS
31	C3	2.31	L	31	RUST ON LEG
32	Y-FACE	2.29	C	32	RUST ON DIAGONAL GUSSET
33	Y-FACE	2.29	C	33	RUST ON SKIN SUPPORT ANGLE GUSSET
34	Z-FACE	2.27	C	34	RUST ON GUSSETS
<i>Sutro Tower</i>				Signature: _____	Page: <u>2</u> of <u>7</u>
<i>San Francisco, CA</i>				File: _____	Date: 1-11-17



¹ Item designation: L=leg member, D=diagonal, H=horizontal, C=connection, O=others

Inspection Data Sheet: Leg C (Level 2 to Level 3)

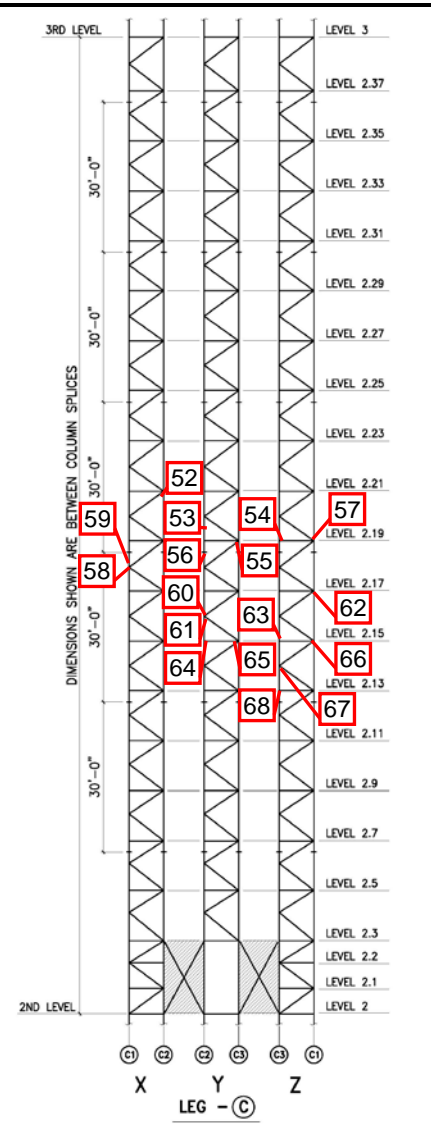
Observ. No.	Location/Identification			Photo No.	Observation Comments
	Column	Elevation	Item ¹		
35	Z-FACE	2.27	C	35	TWO BOLTS ARE LOOSE FOR SKIN SUPPORT ANGLE
36	Y-FACE	2.27	C	36	RUST ON HORIZONTAL GUSSET
37	Y-FACE	2.27	C	37	RF(1), SKIN SUPPORT ANGLE
38	Y-FACE	2.26	C	38	RUST ON TWO GUSSETS
39	Y-FACE	2.25	C	39	MINOR RUST ON THREE GUSSETS
40	C1	2.25	C	40	RF(3), LEG BOLTS
41	C2	2.25	C	41	RF(12), LEG BOLTS
42	Z-FACE	2.25	C	42	RF(1), DIAGONAL BOLT
43	C1	2.25	L	43	RUST ON LEG
44	X-FACE	2.25	C	44	MINOR RUST ON DIAGONAL GUSSET
45	C2	2.25	L	45	MINOR RUST ON LEG
46	C2	2.24	L	46	MINOR RUST ON LEG
47	Y-FACE	2.24	C	47	RF(1), DIAGONAL BOLT AND RUST ON GUSSET
48	Y-FACE	2.23	C	48	THREE RUSTED GUSSETS
49	C3	2.25	C	49	RF(4), LEG BOLTS AND RUST ON LEG
50	Y-FACE	2.23	C	50	RF(1), SKIN SUPPORT ANGLE AND RUSTED HORIZONTAL GUSSET
51	X-FACE	2.21	O	51	DAMAGED JUNCTION BOX AND CABLE NOT PROPERLY ATTACHED
Sutro Tower				Signature: _____	Page: <u>3</u> of <u>7</u>
San Francisco, CA				File: _____	Date: 1-11-17



¹ Item designation: L=leg member, D=diagonal, H=horizontal, C=connection, O=others

Inspection Data Sheet: Leg C (Level 2 to Level 3)

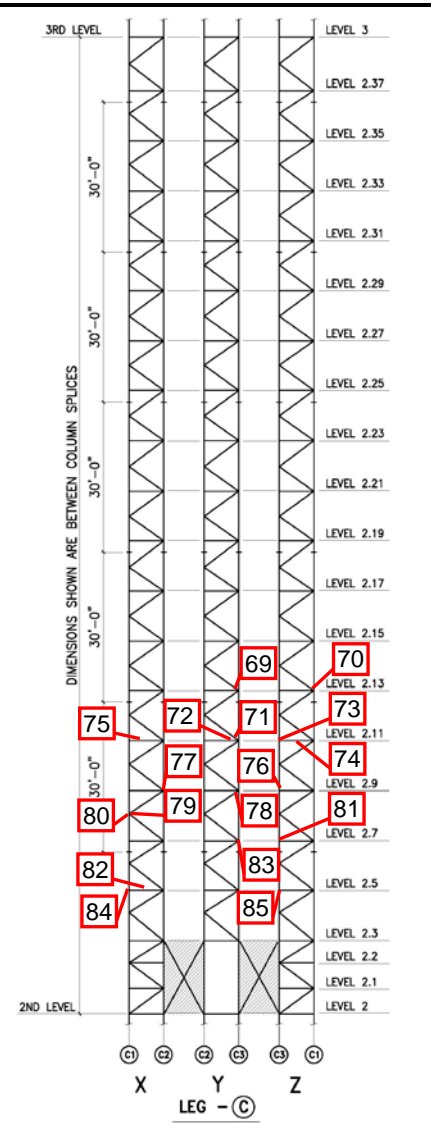
Observ. No.	Location/Identification			Photo No.	Observation Comments
	Column	Elevation	Item ¹		
52	C2	2.19 – 2.21	C	52	MEDIUM RUST ON DIAGONAL GUSSET
53	C2	2.19 – 2.21	L	53	MEDIUM RUST ON LEG
54	Z-FACE	2.19	C	54	TWO BOLTS ARE MISSING FOR SKIN SUPPORT CHANNEL
55	Y-FACE	2.19	D	55	MINOR RUST ON DIAGONAL MEMBER
56	C2	2.19	C	56	RF(12), LEG BOLTS
57	Z-FACE	2.19	C	57	RUST ON GUSSETS
58	X-FACE	2.18	O	58	ELECTRICAL BOX IS MISSING COVER
59	X-FACE	2.18	C	59	RF(1), DIAGONAL BOLT
60	C2	2.16	L	60	RUST ON LEG
61	Y-FACE	2.16	C	61	MINOR RUST ON DIAGONAL GUSSET
62	Z-FACE	2.17	C	62	MEDIUM RUST ON HORIZONTAL GUSSET
63	Z-FACE	2.15	C	63	RF(1), SKIN SUPPORT ANGLE
64	Y-FACE	2.15	C	64	RF(2), AND MINOR RUST ON GUSSET
65	Y-FACE	2.15	C	65	RF(2), HORIZONTAL BOLT AND ALL THREE GUSSETS ARE RUSTED
66	Z-FACE	2.15	C	66	RF(1), DIAGONAL BOLT AND MINOR RUST ON HORIZONTAL GUSSET
67	Z-FACE	2.14	C	67	RF(1), DIAGONAL BOLT
68	Z-FACE	2.13	C	68	FOUR LOOSE BOLTS FOR SKIN BEAM CONNECTION
Sutro Tower				Signature:	Page: <u>4</u> of <u>7</u>
San Francisco, CA				File:	Date: 1-11-17



¹ Item designation: L=leg member, D=diagonal, H=horizontal, C=connection, O=others

Inspection Data Sheet: Leg C (Level 2 to Level 3)

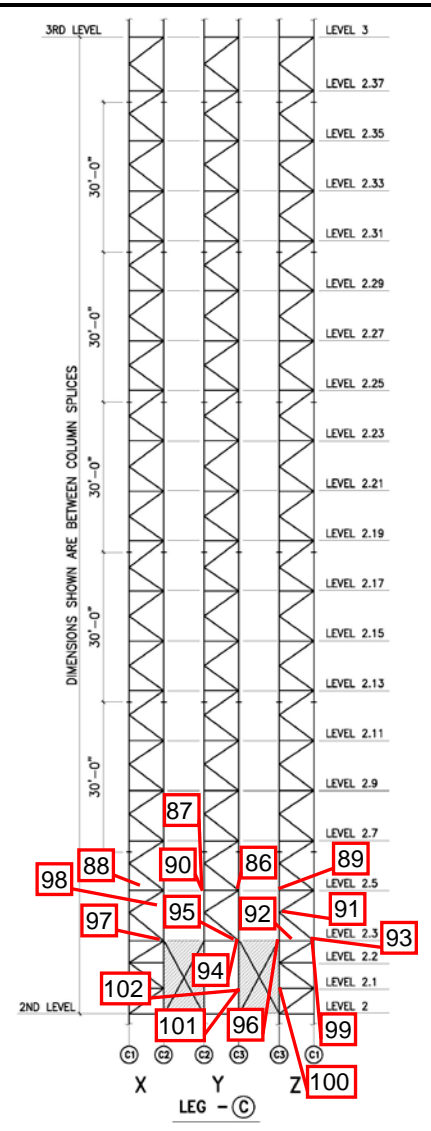
Observ. No.	Location/Identification			Photo No.	Observation Comments
	Column	Elevation	Item ¹		
69	Y-FACE	2.13	C	69	MEDIUM RUST ON GUSSETS
70	Z-FACE	2.13	C	70	RUST ON GUSSET AND LEG
71	Y-FACE	2.11	C	71	MEDIUM RUST ON GUSSET PLATES
72	Y-FACE	2.11	C	72	RF(2), HORIZONTAL BOLTS
73	Z-FACE	2.11	C	73	FOUR LOOSE BOLTS FOR BEAM
74	Z-FACE	2.11	O	74	ANTENNA SUPPORT CONNECTION BOLTS ARE RUSTED
75	X-FACE	2.11	C	75	MEDIUM RUST ON GUSSET
76	Z-FACE	2.9	C	76	ONE SKIN BEAM BOLT IS LOOSE
77	X-FACE	2.9	C	77	RF(2), SKIN SUPPORT ANGLE BOLTS
78	Y-FACE	2.9	C	78	RUST ON WELD FOR DIAGONAL GUSSET
79	X-FACE	2.8	C	79	RUSTED GUSSET PLATES
80	X-FACE	2.8	C	80	DRAIN HOLES ARE PLUGGED FOR GUSSETS
81	Z-FACE	2.7	C	81	FOUR SKIN BOLTS ARE LOOSE
82	X-FACE	2.5	C	82	RUSTED GUSSETS
83	Y-FACE	2.7	C	83	ALL GUSSETS ARE RUSTED
84	X-FACE	2.5	L	84	MINOR RUST ON LEG
85	Z-FACE	2.5	C	85	FOUR LOOSE BEAM BOLTS
<i>Sutro Tower</i>				Signature: _____	Page: <u>5</u> of <u>7</u>
<i>San Francisco, CA</i>				File: _____	Date: 1-11-17



¹ Item designation: L=leg member, D=diagonal, H=horizontal, C=connection, O=others

Inspection Data Sheet: Leg C (Level 2 to Level 3)

Observ. No.	Location/Identification			Photo No.	Observation Comments
	Column	Elevation	Item ¹		
86	Y-FACE	2.5	C	86	RF(2)
87	Y-FACE	2.5	C	87	RF(2), SKIN SUPPORT BOLTS
88	X-FACE	2.5	O	88	DAMAGED JUNCTION BOX AND BROKEN LIGHT
89	Z-FACE	2.5	C	89	RUST ON GUSSETS
90	Y-FACE	2.5	C	90	MINOR RUST ON HORIZONTAL GUSSET
91	Z-FACE	2.4	C	91	RF(1), DIAGONAL BOLT
92	Z-FACE	2.3	C	92	FOUR BEAM BOLTS ARE LOOSE
93	C1	2.3	C	93	RF(3)
94	Y-FACE	2.3	C	94	RUST ON GUSSETS
95	Y-FACE	2.3	C	95	RF(1), HORIZONTAL BOLT
96	Z-FACE	2.3	C	96	RUST ON HORIZONTAL MEMBER GUSSET
97	C2	2.3	C	97	RF(4)
98	C2	2.3 - 2.5	C	98	MEDIUM RUST ON DIAGONAL GUSSET
99	Z-FACE	2.3	C	99	RF(2)
100	Z-FACE	2.1	C	100	RUST ON HORIZONTAL GUSSET
101	Y-FACE	2.1	C	101	THREE RUSTED GUSSET PLATES
102	Y-FACE	2.1	O	102	ANTENNA MOUNT HAS ONE LOOSE CONNECTION BOLT
Sutro Tower				Signature: _____	Page: <u>6</u> of <u>7</u>
San Francisco, CA				File: _____	Date: 1-11-17



¹ Item designation: L=leg member, D=diagonal, H=horizontal, C=connection, O=others



Photo 1.JPG
8/9/2016

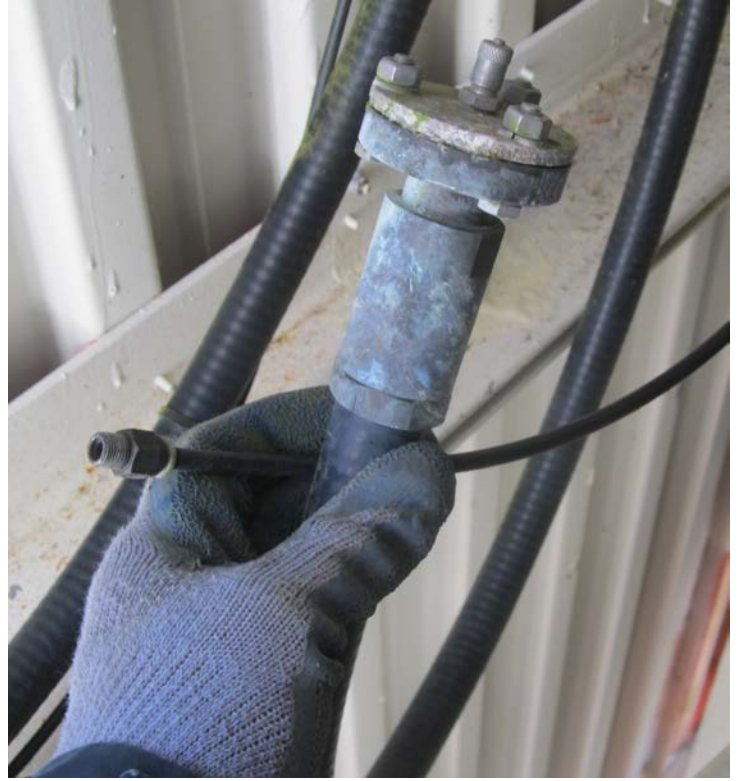


Photo 2.JPG
8/9/2016



Photo 3.JPG
8/9/2016



Photo 4.JPG
8/9/2016



Photo 5.JPG
8/9/2016



Photo 6.JPG
8/9/2016



Photo 7.JPG
8/9/2016



Photo 8.JPG
8/9/2016



Photo 9.JPG
8/9/2016



Photo 10.JPG
8/9/2016



Photo 11.JPG
8/9/2016



Photo 12.JPG
8/9/2016



Photo 13.JPG
8/9/2016



Photo 14.JPG
8/9/2016



Photo 15.JPG
8/9/2016



Photo 16.JPG
8/9/2016



Photo 17.JPG
8/9/2016



Photo 18.JPG
8/9/2016



Photo 19.JPG
8/9/2016



Photo 20.JPG
8/9/2016



Photo 21.JPG
8/9/2016



Photo 22.JPG
8/9/2016



Photo 23.JPG
8/9/2016

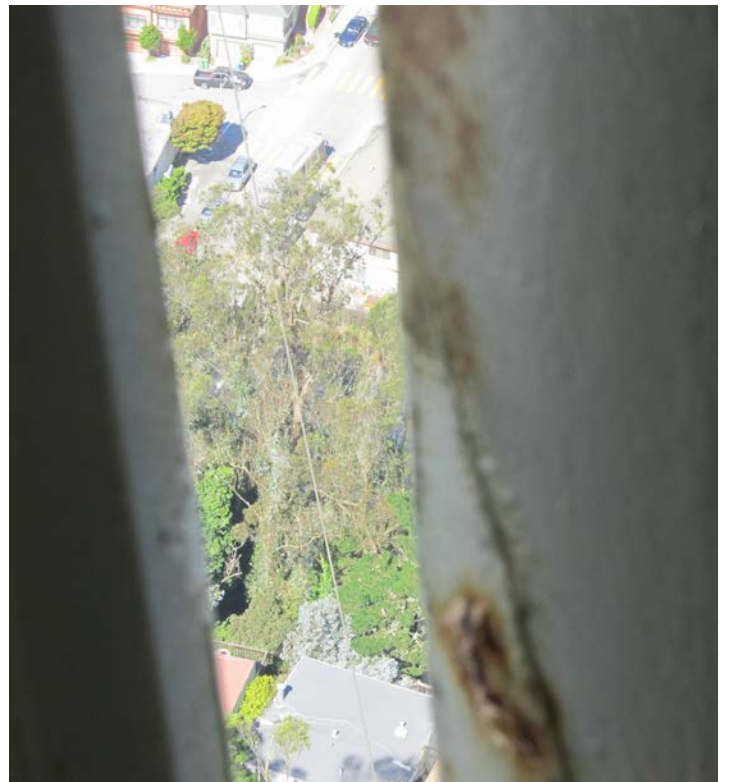


Photo 24.JPG
8/9/2016



Photo 25.JPG
8/9/2016



Photo 26.JPG
8/9/2016



Photo 27.JPG
8/9/2016



Photo 28.JPG
8/9/2016



Photo 29.JPG
8/9/2016



Photo 30.JPG
8/9/2016



Photo 31.JPG
8/9/2016



Photo 32.JPG
8/9/2016



Photo 33.JPG
8/9/2016



Photo 34.JPG
8/9/2016



Photo 35.JPG
8/9/2016



Photo 36.JPG
8/9/2016



Photo 37.JPG
8/9/2016



Photo 38.JPG
8/9/2016



Photo 39.JPG
8/9/2016

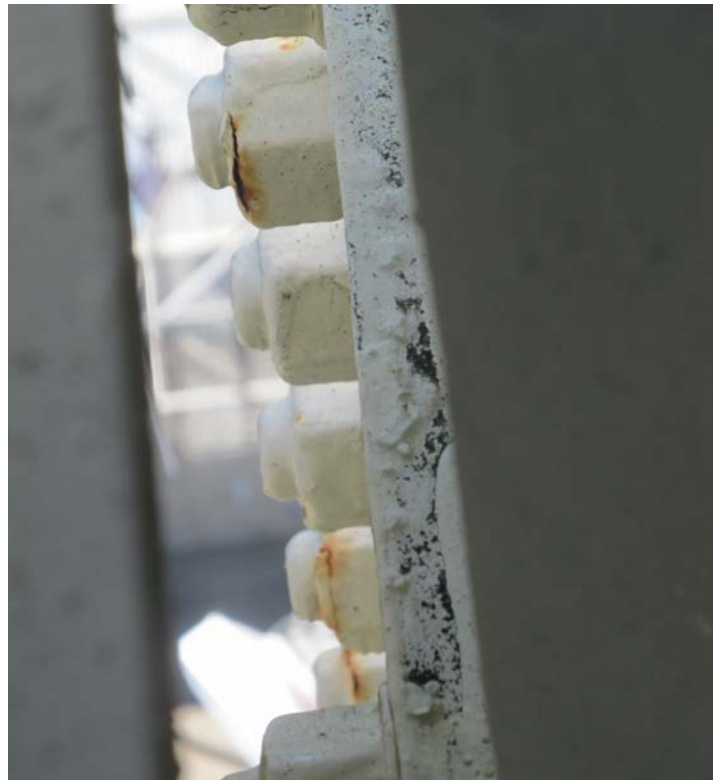


Photo 40.JPG
8/9/2016



Photo 41.JPG
8/9/2016



Photo 42.JPG
8/9/2016



Photo 43.JPG
8/9/2016



Photo 44.JPG
8/9/2016



Photo 45.JPG
8/9/2016



Photo 46.JPG
8/9/2016



Photo 47.JPG
8/9/2016



Photo 48.JPG
8/9/2016



Photo 49.JPG
8/9/2016



Photo 50.JPG
8/9/2016



Photo 51.JPG
8/9/2016



Photo 52.JPG
8/9/2016



Photo 53.JPG
8/9/2016



Photo 54.JPG
8/9/2016



Photo 55.JPG
8/9/2016



Photo 56.JPG
8/9/2016

Leg C (Level 2 to Level 3)



Photo 57.JPG
8/9/2016



Photo 58.JPG
8/9/2016



Photo 59.JPG
8/9/2016



Photo 60.JPG
8/9/2016



Photo 61.JPG
8/9/2016



Photo 62.JPG
8/9/2016



Photo 63.JPG
8/9/2016

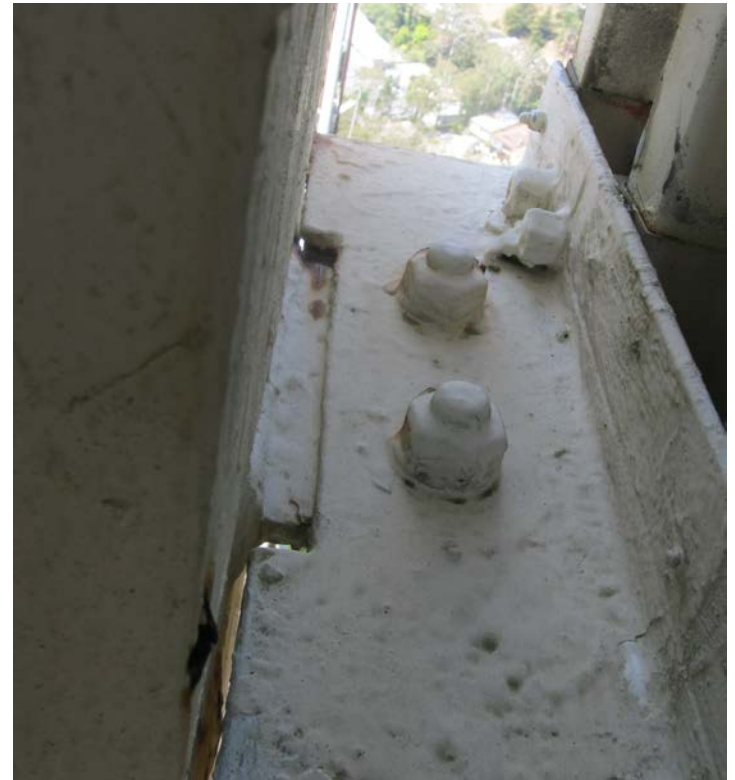


Photo 64.JPG
8/9/2016



Photo 65.JPG
8/9/2016



Photo 66.JPG
8/9/2016



Photo 67.JPG
8/9/2016



Photo 68.JPG
8/9/2016

Leg C (Level 2 to Level 3)



Photo 69.JPG
8/9/2016



Photo 70.JPG
8/9/2016



Photo 71.JPG
8/9/2016



Photo 72.JPG
8/9/2016



Photo 73.JPG
8/9/2016



Photo 74.JPG
8/9/2016



Photo 75.JPG
8/9/2016



Photo 76.JPG
8/9/2016



Photo 77.JPG
8/9/2016



Photo 78.JPG
8/9/2016



Photo 79.JPG
8/9/2016



Photo 80.JPG
8/9/2016



Photo 81.JPG
8/9/2016



Photo 82.JPG
8/9/2016



Photo 83.JPG
8/9/2016

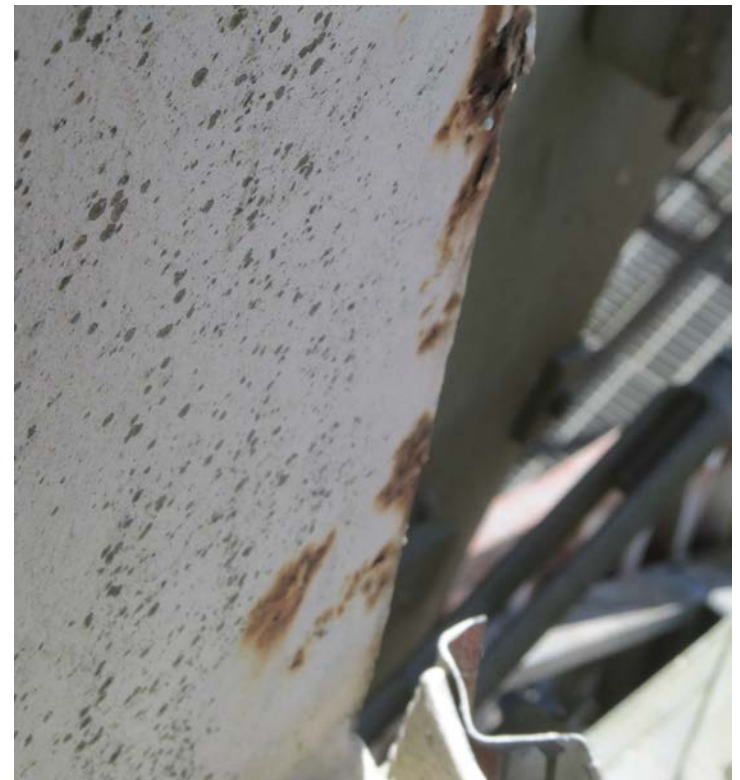


Photo 84.JPG
8/9/2016



Photo 85.JPG
8/9/2016



Photo 86.JPG
8/9/2016



Photo 87.JPG
8/9/2016



Photo 88.JPG
8/9/2016



Photo 89.JPG
8/9/2016



Photo 90.JPG
8/9/2016



Photo 91.JPG
8/9/2016



Photo 92.JPG
8/9/2016



Photo 93.JPG
8/9/2016

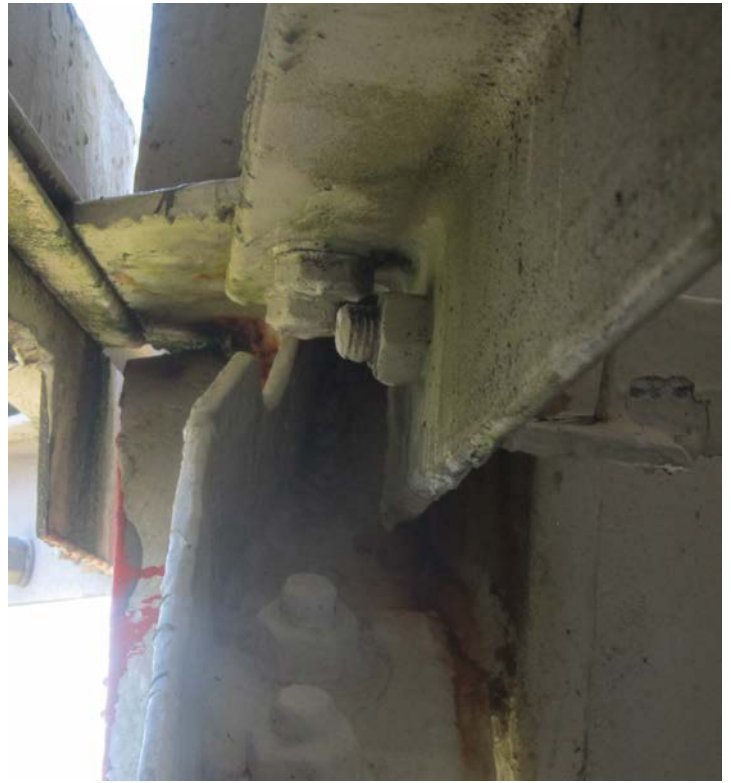


Photo 94.JPG
8/9/2016



Photo 95.JPG
8/9/2016



Photo 96.JPG
8/9/2016



Photo 97.JPG
8/9/2016



Photo 98.JPG
8/9/2016



Photo 99.JPG
8/9/2016



Photo 100.JPG
8/9/2016



Photo 101.JPG
8/9/2016



Photo 102.JPG
8/9/2016



Photo 103.JPG
8/9/2016

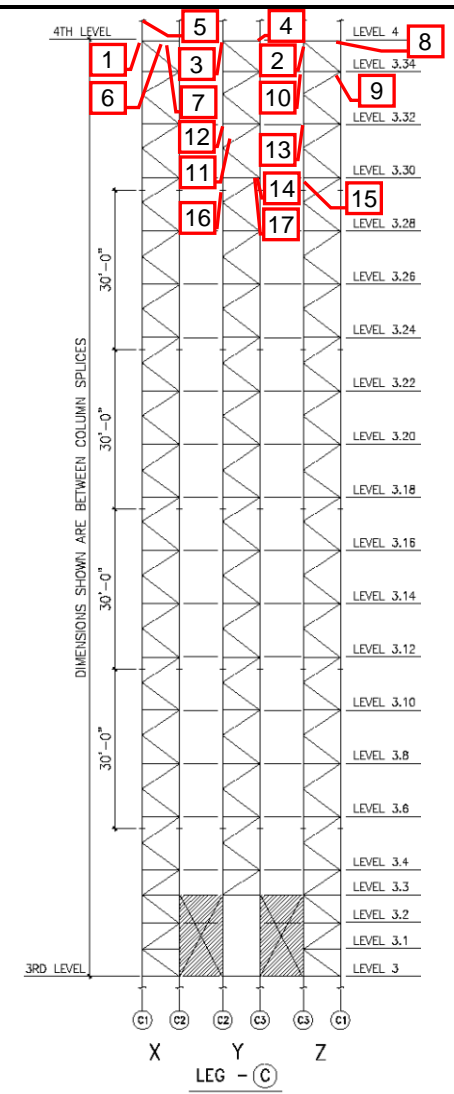


Photo 104.JPG
8/9/2016

Leg C (Level 2 to Level 3)

Inspection Data Sheet: Leg C (Level 3 to Level 4)

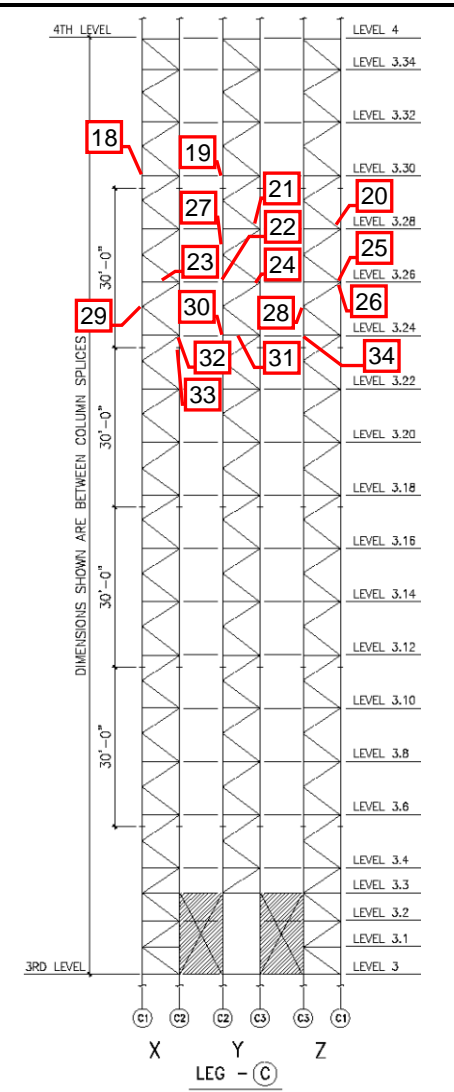
Observ. No.	Location/Identification			Photo No.	Observation Comments
	Column	Elevation	Item ¹		
1	C1	4	C	1	RF(1)
2	C3	4	C	2	5/8" BEAM CONNECTION BOLT IS MISSING
3	C2	4	C	3	TWO BEAM CONNECTION BOLTS ARE LOOSE
4	Y-FACE	4	C	4	RUSTED DIAGONAL GUSSET
5	C1	4	L	5	MINOR RUST ON LEG
6	X-FACE	4	C	6	RF(1), HORIZONTAL BOLT
7	X-FACE	4	C	7	LOOSE HORIZONTAL STITCH BOLT
8	C1	4	C	8	RF(6), LEG BOLTS
9	Z-FACE	3.34	C	9	ONE SKIN SUPPORT BOLT IS RUSTED
10	Z-FACE	3.34	C	10	BOLTS FOR OUTSIDE BEAM ARE LOOSE OR SHORT
11	Y-FACE	3.30 - 4	O	11	LOOSE LINES
12	C2	3.32	L	12	MINOR RUST ON LEG
13	Z-FACE	3.32	C	13	RF(2), HORIZONTAL BOLTS & RF(1) SKIN PANEL BOLT
14	Y-FACE	3.30	C	14	RF(2), HORIZONTAL BOLTS
15	C3	3.30	O	15	OMNI ANTENNA MOUNT HAS RUSTED HARDWARE
16	C2	3.30	C	16	RF(4), LEG BOLTS
17	C3	3.30	C	17	RF(4), LEG BOLTS
<i>Sutro Tower</i>				Signature: _____	Page: <u> 1 </u> of <u> 5 </u>
<i>San Francisco, CA</i>				File: _____	Date: 1-11-17



¹ Item designation: L=leg member, D=diagonal, H=horizontal, C=connection, O=others

Inspection Data Sheet: Leg C (Level 3 to Level 4)

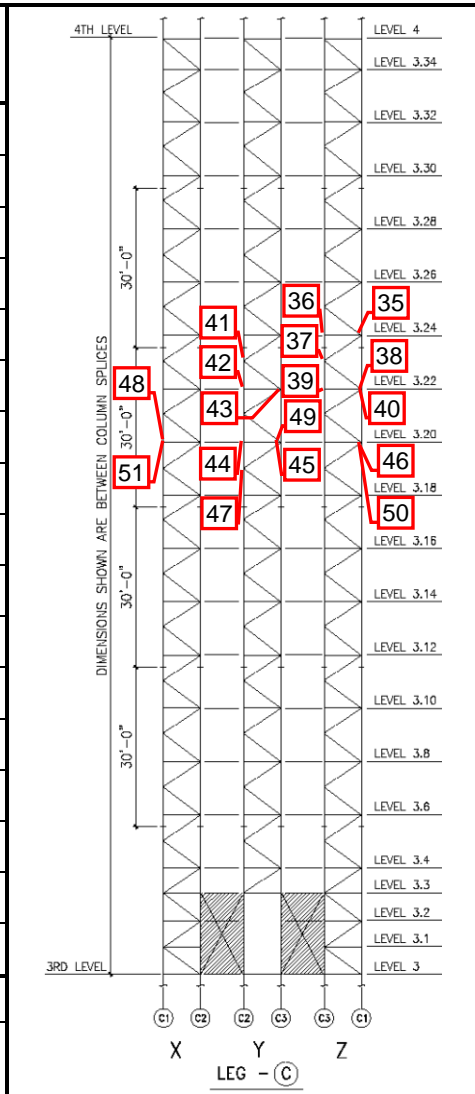
Observ. No.	Location/Identification			Photo No.	Observation Comments
	Column	Elevation	Item ¹		
18	C1	3.30	C	18	RF(1), LEG BOLT
19	C2	3.30	L	19	MINOR RUST ON LEG
20	Z-FACE	3.28	L	20	MINOR RUST ON LEG
21	Y-FACE	3.28	C	21	RF(2), HORIZONTAL BOLTS
22	Y-FACE	3.26	C	22	RF(1), SKIN SUPPORT ANGLE BOLT
23	X-FACE	3.26	D	23	DIAGONAL MEMBER SHOWS RUST
24	Y-FACE	3.26	C	24	ONE BOLT IS LOOSE FOR BEAM CONNECTION
25	Z-FACE	3.26	C	25	RUST ON GUSSET PLATE WELD & HORIZONTAL BOLT
26	Z-FACE	3.26	C	26	RF(1), SKIN SUPPORT ANGLE BOLT
27	C2	3.27	L	27	RUSTED SPOTS ON LEG
28	Z-FACE	3.24 - 3.26	C	28	RF(1), DIAGONAL BOLT
29	X-FACE	3.24 - 3.26	C	29	RF(1), DIAGONAL BOLT
30	C2	3.24	C	30	RF(7), LEG BOLTS
31	C2	3.24	L	31	RUST ON LEG SPLICE
32	X-FACE	3.24	C	32	GUSSET SHOWS RUST
33	X-FACE	3.24	C	33	HORIZONTAL GUSSET SHOWS RUST
34	Y-FACE	3.24	C	34	TWO BOLTS ARE LOOSE FOR SKIN SUPPORT ANGLE
Sutro Tower				Signature:	Page: <u>2</u> of <u>5</u>
San Francisco, CA				File:	Date: 1-11-17



¹ Item designation: L=leg member, D=diagonal, H=horizontal, C=connection, O=others

Inspection Data Sheet: Leg C (Level 3 to Level 4)

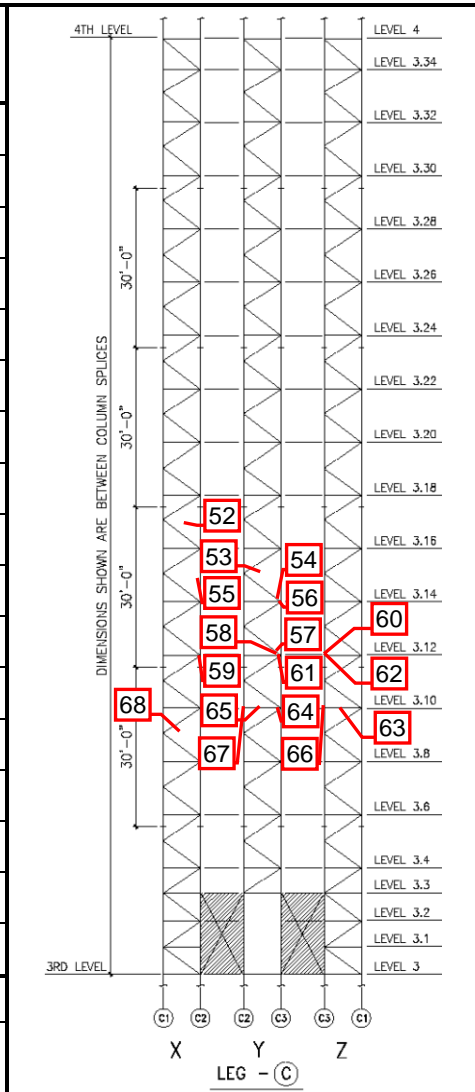
Observ. No.	Location/Identification			Photo No.	Observation Comments		
	Column	Elevation	Item ¹				
35	C1	3.24	C	35	RF(2), LEG BOLTS AND RUST ON LEG		
36	C3	3.24	C	36	MINOR RUST ON BOLTS AND LEG SPLICE		
37	Z-FACE	3.23	C	37	RF(1), DIAGONAL BOLT		
38	C1	3.22	C	38	RUST ON WELD FOR GUSSET		
39	Z-FACE	3.22	C	39	RF(1), HORIZONTAL BOLT		
40	C1	3.22	C	40	RF(1), DIAGONAL BOLT		
41	Y-FACE	3.23	C	41	RUST ON DIAGONAL GUSSET		
42	Y-FACE	3.22	C	42	RF(1), SKIN SUPPORT ANGLE BOLT		
43	C3	3.22	C	43	RF(1), SKIN SUPPORT ANGLE BOLT		
44	Y-FACE	3.20	O	44	TWO LOOSE 7/8" LINES		
45	Y-FACE	3.20	C	45	RF(2), HORIZONTAL BOLTS & RF(1), SKIN SUPPORT BOLT		
46	Z-FACE	3.20	C	46	ONE BEAM CONNECTION BOLT IS MISSING		
47	C2	3.19	C	47	GUSSET PLATE IS RUSTED		
48	X-FACE	3.20	C	48	GUSSET PLATE IS RUSTED		
49	Y-FACE	3.20	C	49	RF(2), BEAM CONNECTION BOLTS		
50	Z-FACE	3.20	C	50	RF(1), DIAGONAL BOLT		
51	X-FACE	3.20	O	51	ANTENNA MOUNT GUY WIRES HAVE RUSTED COTTER PINS		
Sutro Tower				Signature: _____		Page: <u>3</u> of <u>5</u>	
San Francisco, CA				File: _____		Date: 1-11-17	



¹ Item designation: L=leg member, D=diagonal, H=horizontal, C=connection, O=others

Inspection Data Sheet: Leg C (Level 3 to Level 4)

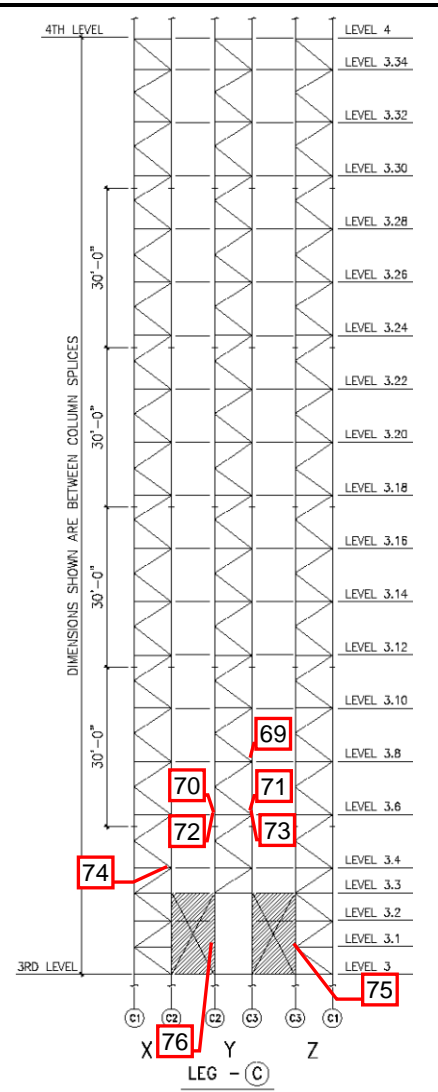
Observ. No.	Location/Identification			Photo No.	Observation Comments
	Column	Elevation	Item ¹		
52	X-FACE	3.17	O	52	BROKEN LIGHT
53	Y-FACE	3.15	O	53	¼" LINES ARE LOOSE
54	Y-FACE	3.14	C	54	SKIN SUPPORT ANGLE CONNECTION BOLT IS LOOSE
55	C2	3.15	L	55	RUST ON LEG
56	Y-FACE	3.14	C	56	RF(3), DIAGONAL BOLTS
57	Y-FACE	3.12	C	57	RUSTED SKIN SUPPORT ANGLE CONNECTION BOLTS
58	C3	3.12	L	58	RUST ON LEG
59	C2	3.12	C	59	RF(4)
60	Z-FACE	3.12	C	60	TWO BOLTS ARE MISSING FOR BEAM CONNECTION
61	Y-FACE	3.12	C	61	HORIZONTAL GUSSET SHOWS SIGN OF RUST
62	C3	3.12	L	62	RUST ON LEG
63	Z-FACE	3.10	O	63	DAMAGED ELECTRICAL CABLE FOR JUNCTION BOX
64	Y-FACE	3.10	C	64	RUST ON DIAGONAL GUSSETS
65	Y-FACE	3.10	C	65	SKIN SUPPORT CONNECTION BOLTS ARE LOOSE
66	Z-FACE	3.10	C	66	TWO BOLTS ARE MISSING FOR THE OUTSIDE BEAM
67	Y-FACE	3.10	C	67	GUSSET PLATE SHOWS SIGN OF RUST
68	X-FACE	3.9	O	68	BROKEN LIGHT
Sutro Tower				Signature: _____	Page: <u>4</u> of <u>5</u>
San Francisco, CA				File: _____	Date: 1-11-17



¹ Item designation: L=leg member, D=diagonal, H=horizontal, C=connection, O=others

Inspection Data Sheet: Leg C (Level 3 to Level 4)

Observ. No.	Location/Identification			Photo No.	Observation Comments
	Column	Elevation	Item ¹		
69	Y-FACE	3.8	C	69	TWO BOLTS ARE LOOSE FOR OUTSIDE BEAM CONNECTION
70	C2	3.6	C	70	GUSSET PLATE FOR SKIN ANGLE SUPPORT IS RUSTED
71	Y-FACE	3.6	C	71	DIAGONAL GUSSET IS RUSTED
72	C2	3.6	C	72	RF(2), LEG BOLTS
73	C3	3.6	C	73	RF(1)
74	X-FACE	3.4	C	74	RUST ON DIAGONAL GUSSET
75	Z-FACE	3.1	C	75	WATER POOLING IN DIAGONAL GUSSET
76	Y-FACE	3.1	C	76	RF(1), HORIZONTAL BOLT
<i>Sutro Tower</i>				Signature:	Page: <u> 5 </u> of <u> 5 </u>
<i>San Francisco, CA</i>				File:	Date: 1-11-17



¹ Item designation: L=leg member, D=diagonal, H=horizontal, C=connection, O=others



Photo 1.JPG
8/8/2016



Photo 2.JPG
8/8/2016



Photo 3.JPG
8/8/2016

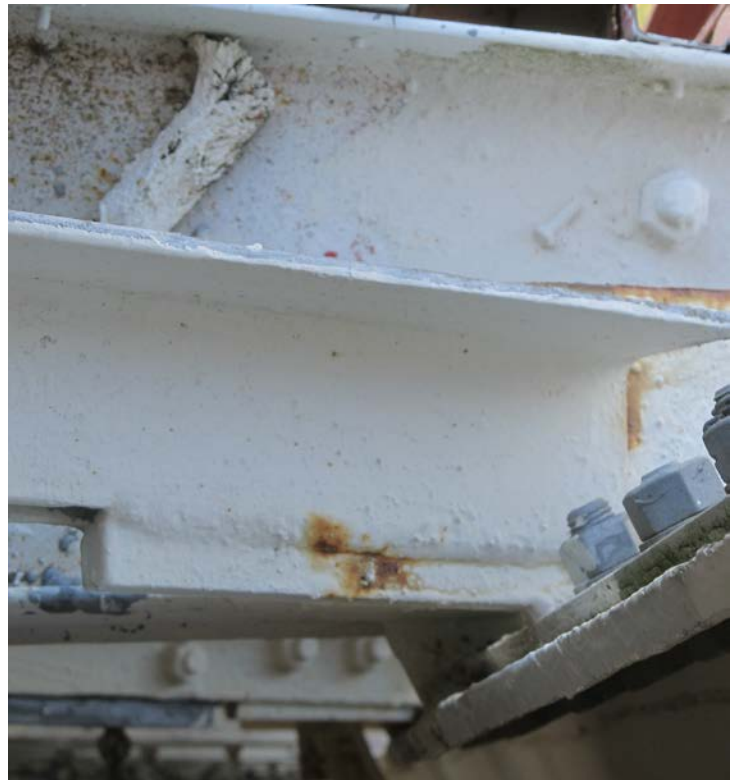


Photo 4.JPG
8/8/2016



Photo 5.JPG
8/8/2016



Photo 6.JPG
8/8/2016



Photo 7.JPG
8/8/2016



Photo 8.JPG
8/8/2016



Photo 9.JPG
8/8/2016



Photo 10.JPG
8/8/2016



Photo 11.JPG
8/8/2016



Photo 12.JPG
8/8/2016



Photo 13.JPG
8/8/2016

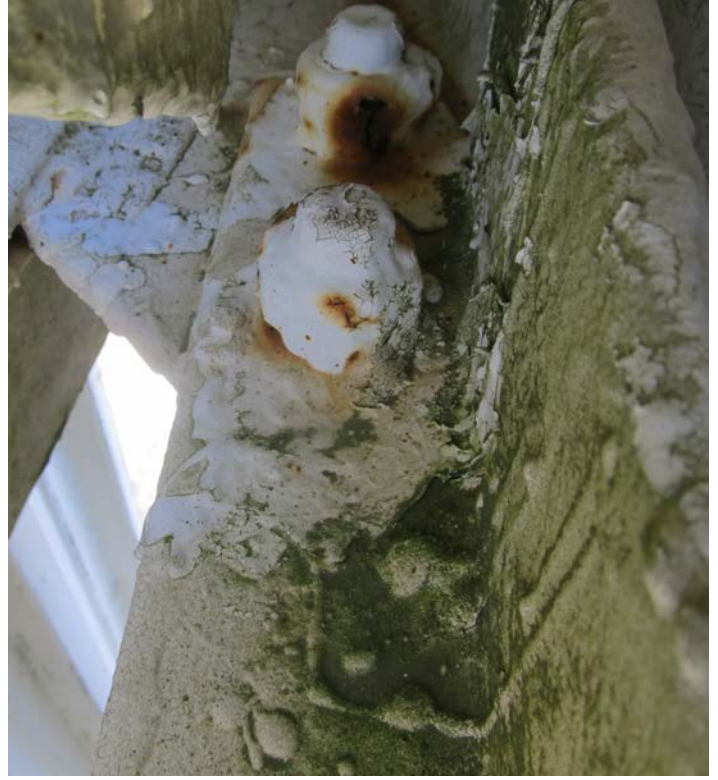


Photo 14.JPG
8/8/2016



Photo 15.JPG
8/8/2016



Photo 16.JPG
8/8/2016



Photo 17.JPG
8/8/2016

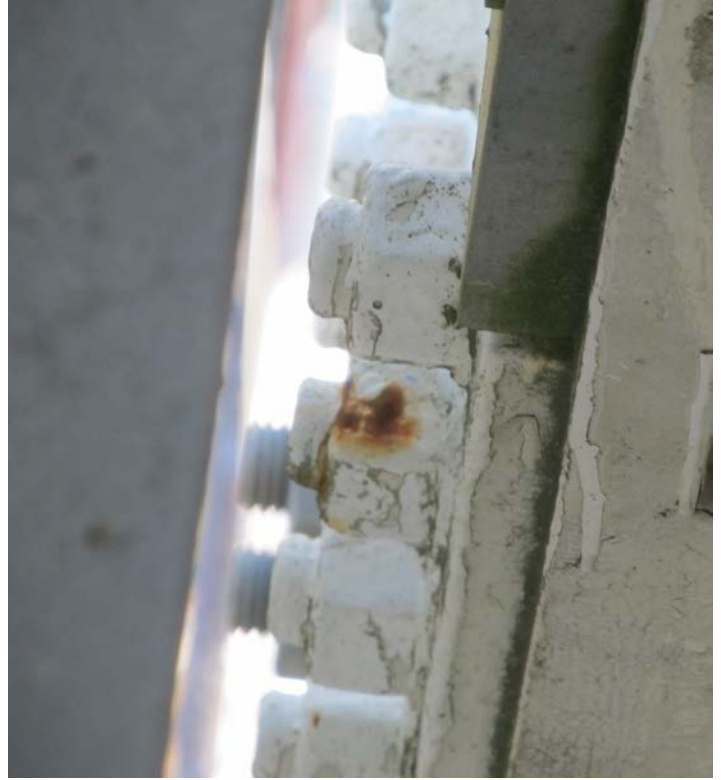


Photo 18.JPG
8/8/2016



Photo 19.JPG
8/8/2016



Photo 20.JPG
8/8/2016



Photo 21.JPG
8/8/2016



Photo 22.JPG
8/8/2016



Photo 23.JPG
8/8/2016



Photo 24.JPG
8/8/2016



Photo 25.JPG
8/8/2016



Photo 26.JPG
8/8/2016



Photo 27.JPG
8/8/2016



Photo 28.JPG
8/8/2016



Photo 29.JPG
8/8/2016



Photo 30.JPG
8/8/2016



Photo 31.JPG
8/8/2016



Photo 32.JPG
8/8/2016



Photo 33.JPG
8/8/2016



Photo 34.JPG
8/8/2016



Photo 35.JPG
8/8/2016



Photo 36.JPG
8/8/2016



Photo 37.JPG
8/8/2016



Photo 38.JPG
8/8/2016



Photo 39.JPG
8/8/2016



Photo 40.JPG
8/8/2016



Photo 41.JPG
8/8/2016



Photo 42.JPG
8/8/2016



Photo 43.JPG
8/8/2016

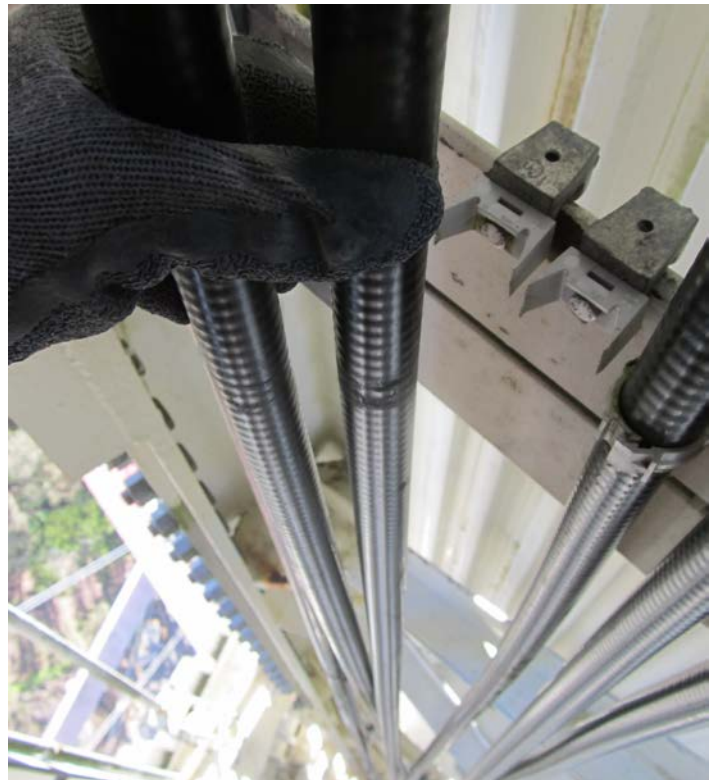


Photo 44.JPG
8/8/2016



Photo 45.JPG
8/8/2016

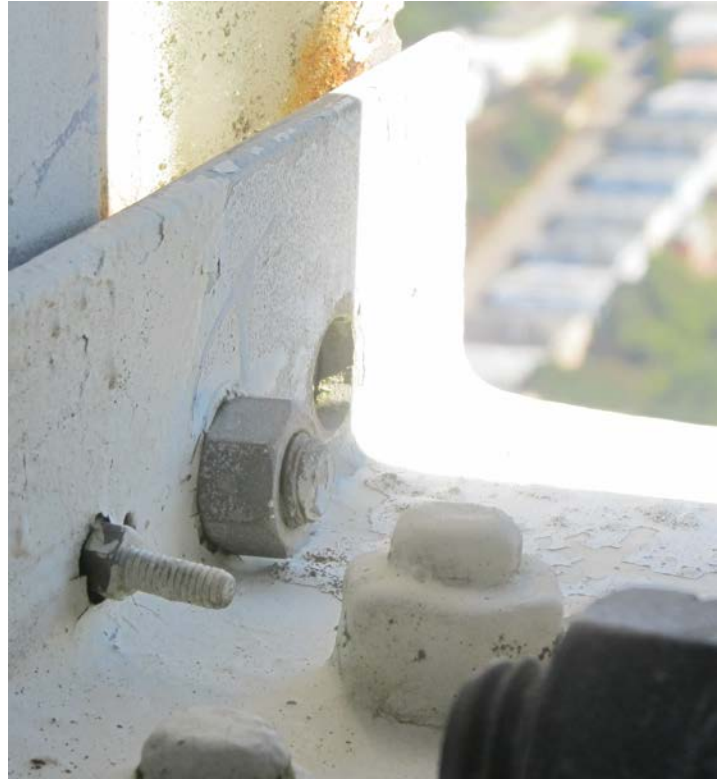


Photo 46.JPG
8/8/2016



Photo 47.JPG
8/8/2016



Photo 48.JPG
8/8/2016



Photo 49.JPG
8/8/2016

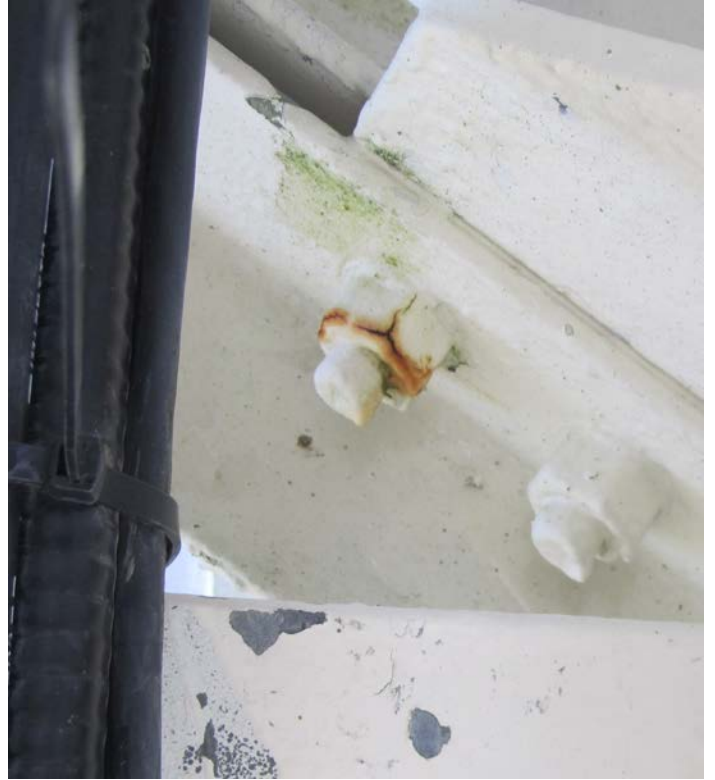


Photo 50.JPG
8/8/2016



Photo 51.JPG
8/8/2016



Photo 52.JPG
8/8/2016



Photo 53.JPG
8/8/2016



Photo 54.JPG
8/8/2016



Photo 55.JPG
8/8/2016



Photo 56.JPG
8/8/2016



Photo 57.JPG
8/8/2016



Photo 58.JPG
8/8/2016



Photo 59.JPG
8/8/2016



Photo 60.JPG
8/8/2016



Photo 61.JPG
8/8/2016



Photo 62.JPG
8/8/2016



Photo 63.JPG
8/8/2016



Photo 64.JPG
8/8/2016



Photo 65.JPG
8/8/2016



Photo 66.JPG
8/8/2016



Photo 67.JPG
8/8/2016



Photo 68.JPG
8/8/2016



Photo 69.JPG
8/8/2016



Photo 70.JPG
8/8/2016



Photo 71.JPG
8/8/2016



Photo 72.JPG
8/8/2016



Photo 73.JPG
8/8/2016



Photo 74.JPG
8/8/2016



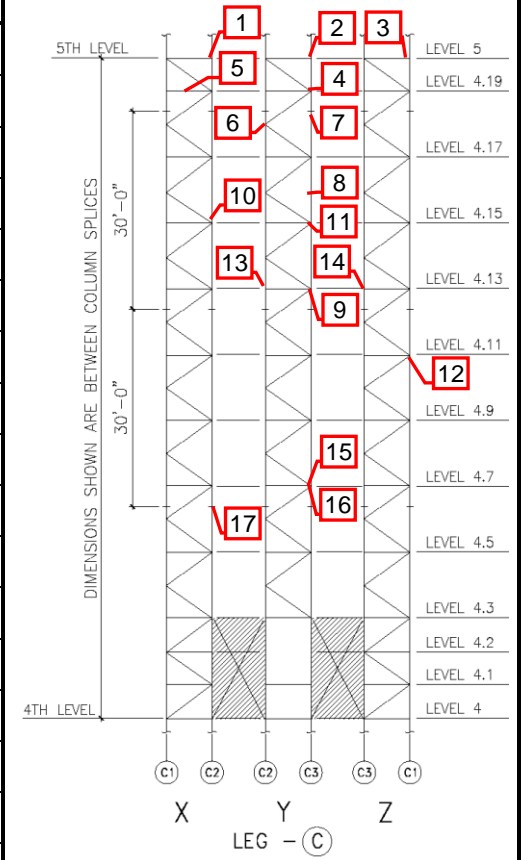
Photo 75.JPG
8/9/2016



Photo 76.JPG
8/9/2016

Inspection Data Sheet: Leg C (Level 4 to Level 5)

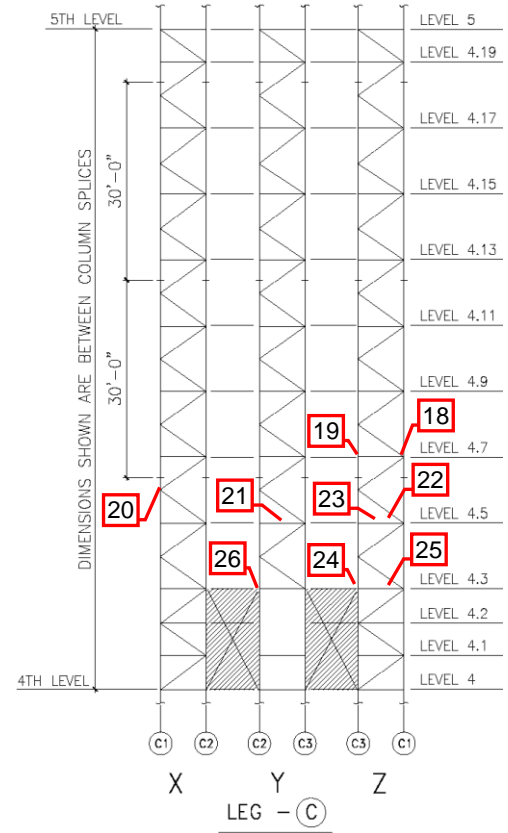
Observ. No.	Location/Identification			Photo No.	Observation Comments
	Column	Elevation	Item ¹		
1	C2	5	C	1	RF(12), LEG BOLTS
2	C3	5	C	2	RF(3), LEG BOLTS
3	C1	5	C	3	RF(7), LEG REINFORCEMENT BOLTS AND RUST ON PLATE
4	Y-FACE	4.19	C	4	RF(1), AND RUST ON GUSSET
5	X-FACE	4.19	H	5	BENT HORIZONTAL
6	Y-FACE	4.18	C	6	RF(1), DIAGONAL BOLT
7	C3	4.18	C	7	RF(8), LEG REINFORCING BOLTS
8	Y-FACE	4.16	C	8	RF(5), LEG REINFORCING BOLTS
9	Y-FACE	4.13	C	9	MINOR RUST ON HORIZONTAL GUSSET
10	X-FACE	4.15	C	10	RF(2), HORIZONTAL BOLTS
11	Y-FACE	4.15	C	11	MINOR RUST ON HORIZONTAL GUSSET
12	C1	4.11	L	12	RUST ON LEG
13	C2	4.13	C	13	RF(7), LEG BOLTS
14	C3	4.13	C	14	RF(5), LEG BOLTS
15	Y-FACE	4.7	L	15	RUST ON LEG
16	Y-FACE	4.7	C	16	RF(1), DIAGONAL BOLT
17	C2	4.7	C	17	RF(6), LEG BOLTS
Sutro Tower				Signature: _____	Page: <u> 1 </u> of <u> 2 </u>
San Francisco, CA				File: _____	Date: 1-11-17



¹ Item designation: L=leg member, D=diagonal, H=horizontal, C=connection, O=others

Inspection Data Sheet: Leg C (Level 4 to Level 5)

Observ. No.	Location/Identification			Photo No.	Observation Comments
	Column	Elevation	Item ¹		
18	C1	4.7	C	18	RF(4), LEG BOLTS
19	C3	4.7	C	19	RF(4), LEG BOLTS
20	X-FACE	4.6	C	20	ONE LOOSE STITCH BOLT FOR DIAGONAL
21	Y-FACE	4.5	C	21	BEAM CONNECTION BOLTS ARE NOT CONNECTED PROPERLY
22	Z-FACE	4.5	C	22	TWO BOLTS ARE NOT PROPERLY INSTALLED, NO EDGE DISTANCE
23	Z-FACE	4.5	O	23	HANDRAIL IS BENT
24	C3	4.3	C	24	LEG REINFORCEMENT BOLTS ARE NOT PAINTED
25	Z-FACE	4.3	O	25	CONDUIT IS LOOSE AND NOT ATTACHED TO THE FACE
26	C2	4.3	C	26	RF(1)
<i>Sutro Tower</i>				Signature:	Page: <u> 2 </u> of <u> 2 </u>
<i>San Francisco, CA</i>				File:	Date: 1-11-17



¹ Item designation: L=leg member, D=diagonal, H=horizontal, C=connection, O=others



Photo 1.JPG
8/10/2016



Photo 2.JPG
8/10/2016



Photo 3.JPG
8/10/2016



Photo 4.JPG
8/10/2016



Photo 5.JPG
8/10/2016



Photo 6.JPG
8/10/2016



Photo 7.JPG
8/10/2016



Photo 8.JPG
8/10/2016



Photo 9.JPG
8/10/2016



Photo 10.JPG
8/10/2016



Photo 11.JPG
8/10/2016



Photo 12.JPG
8/10/2016



Photo 13.JPG
8/10/2016



Photo 14.JPG
8/10/2016



Photo 15.JPG
8/10/2016



Photo 16.JPG
8/10/2016



Photo 17.JPG
8/10/2016



Photo 18.JPG
8/10/2016



Photo 19.JPG
8/10/2016



Photo 20.JPG
8/10/2016



Photo 21.JPG
8/10/2016



Photo 22.JPG
8/10/2016

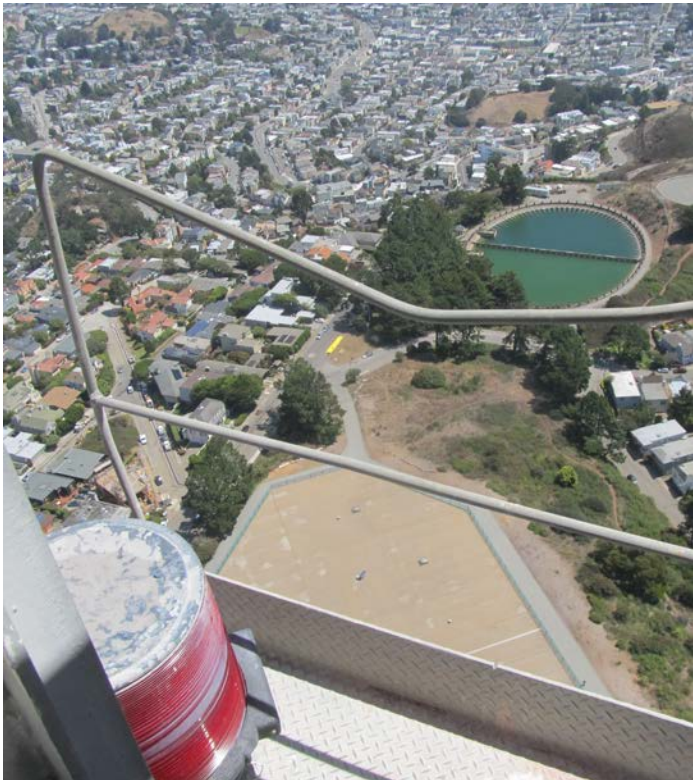


Photo 23.JPG
8/10/2016



Photo 24.JPG
8/10/2016



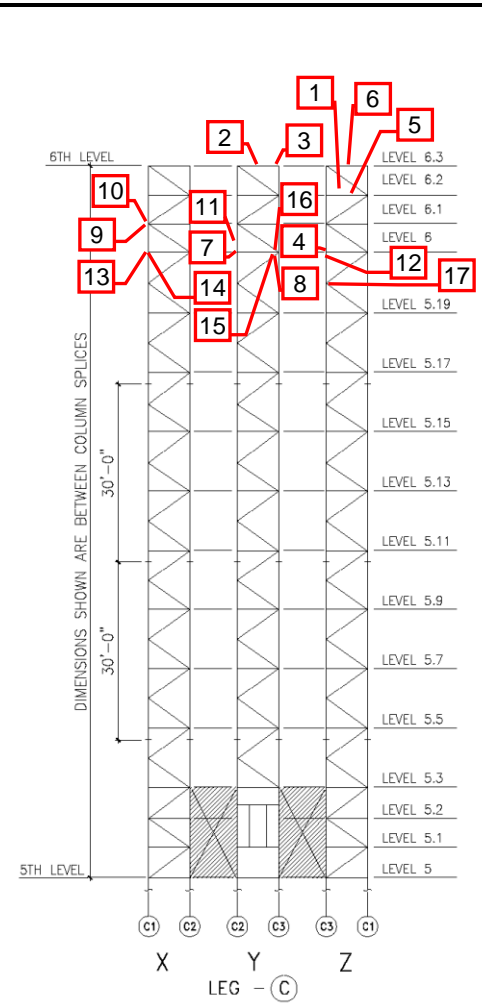
Photo 25.JPG
8/10/2016



Photo 26.JPG
8/10/2016

Inspection Data Sheet: Leg C (Level 5 to Level 6)

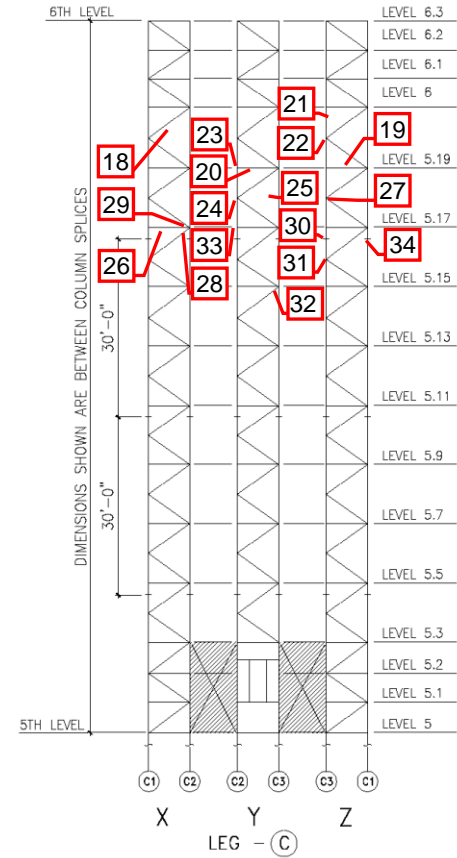
Observ. No.	Location/Identification			Photo No.	Observation Comments
	Column	Elevation	Item ¹		
1	Z-FACE	6.2	O	1	JUNCTION BOX IS MISSING SCREWS
2	Y-FACE	6.3	O	2	LOOSE JUMPER CABLE
3	C3	6.3	L	3	RUST ON LEG
4	Z-FACE	6	O	4	ONE AUXILIARY CONDUIT
5	Z-FACE	6.2	O	5	BROKEN LIGHT
6	CENTER	6.3	O	6	RUSTED HARDWARE FOR SAFETY CABLE RAIL
7	C2	6	C	7	RF(2), HORIZONTAL BOLTS
8	C3	6	C	8	RF(6), LEG REINFORCEMENT BOLTS
9	X-FACE	6.1	C	9	RF(1), HORIZONTAL BOLT
10	C1	6.1	C	10	GUSSET SHOWS MINOR RUST
11	Y-FACE	6.05	O	11	ELECT. COND. JUNCTION BOX COVER IS RUSTED
12	C3	6	C	12	RF(3), HORIZONTAL BOLTS
13	C1	6	C	13	RF(1) AND ONE BOLT IS SHORT
14	X-FACE	6	C	14	COTTER PIN IS RUSTED ON RIGGING FAN PLATE
15	Y-FACE	6	C	15	RF(2), HORIZONTAL BOLTS & RF(1) DIAGONAL BOLT
16	Y-FACE	6	C	16	RF(1), DIAGONAL BOLT AND GUSSET IS RUSTED
17	Z-FACE	5.195	C	17	RUST ON TWO DIAGONAL GUSSETS
Sutro Tower				Signature: _____	Page: <u> 1 </u> of <u> 4 </u>
San Francisco, CA				File: _____	Date: 1-11-17



¹ Item designation: L=leg member, D=diagonal, H=horizontal, C=connection, O=others

Inspection Data Sheet: Leg C (Level 5 to Level 6)

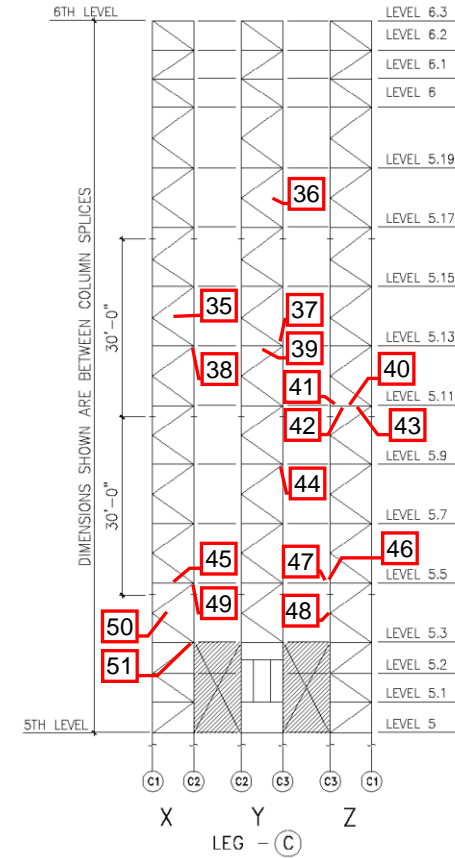
Observ. No.	Location/Identification			Photo No.	Observation Comments
	Column	Elevation	Item ¹		
18	X-FACE	5.195	O	18	CONDUIT HAS RUSTED CONNECTION HARDWARE
19	Z-FACE	5.19	O	19	AUXILIARY CONDUITS AND HARDWARE ARE RUSTED
20	Y-FACE	5.19	O	20	BROKEN SUPPORT HANGER FOR 1-1/8" O.D. CONDUIT
21	Z-FACE	5 – 6.3	O	21	MANY BOLTS ARE SHORT FOR (2) 6" RIGID LINES
22	Z-FACE	5.195	C	22	RF(1), DIAGONAL BOLT
23	Y-FACE	5.19	O	23	BROKEN SUPPORT FOR 7/8" CABLE
24	C2	5.18	C	24	RUST ON GUSSET
25	C3	5.18	L	25	RUST ON LEG
26	X-FACE	5.17	C	26	RUST ON LEG GUSSET WELD
27	Z-FACE	5.18	D	27	RUST ON DIAGONAL
28	X-FACE	5.17	C	28	RUST ON WELD FOR HORIZONTAL GUSSET
29	C2	5.17	C	29	RF(4), LEG BOLTS
30	C3	5.17	C	30	RF(8), LEG BOLTS
31	Z-FACE	5.16	C	31	RF(1), DIAGONAL BOLT
32	Y-FACE	5.15	C	32	RF(1), DIAGONAL BOLT
33	C2	5.17	C	33	RUST ON LEG SPLICE BOLT HEADS
34	C1	5.17	C	34	RF(8), LEG BOLTS AND RUSTED PLATES
Sutro Tower				Signature: _____	Page: <u>2</u> of <u>4</u>
San Francisco, CA				File: _____	Date: 1-11-17



¹ Item designation: L=leg member, D=diagonal, H=horizontal, C=connection, O=others

Inspection Data Sheet: Leg C (Level 5 to Level 6)

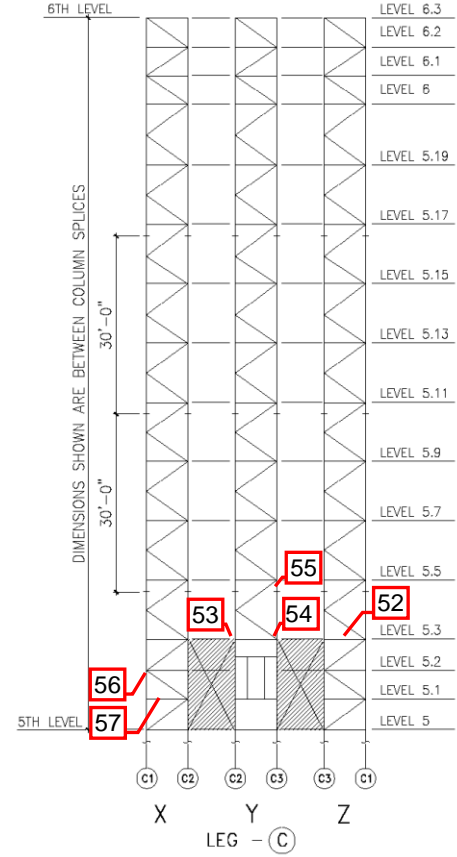
Observ. No.	Location/Identification			Photo No.	Observation Comments
	Column	Elevation	Item ¹		
35	X-FACE	5.14	O	35	BROKEN LIGHT
36	Y-FACE	5 – 6.3	O	36	3" RIGID LINE SUPPORT HARDWARE IS TYP. RUSTED
37	Y-FACE	5.13	C	37	RF(1), HORIZONTAL BOLT
38	X-FACE	5.13	C	38	RF(1), DIAGONAL BOLT
39	Y-FACE	5.13	O	39	BROKEN SUPPORT FOR 3" LINE
40	Z-FACE	5.11	O	40	RUSTED SUPPORT FOR CONDUIT
41	Z-FACE	5.11	O	41	JUNCTION BOX CONNECTORS ARE RUSTED FOR CONDUIT
42	Z-FACE	5.11	O	42	LOOSE CABLE FOR LIGHT
43	Z-FACE	5.11	O	43	RIGID LINE SUPPORT HARDWARE IS RUSTED
44	Y-FACE	5.9	C	44	RF(1), HORIZONTAL BOLT
45	X-FACE	5.5	H	45	BENT HORIZONTAL
46	C3	5.5	L	46	LEG SPLICE IS RUSTED
47	C3	5.5	C	47	RF(2), LEG BOLTS AND LEG SPLICE IS RUSTED
48	C3	5.4	C	48	RF(7), LEG REINFORCING BOLTS
49	C2	5.5	L	49	DEEP RUST ON LEG SPLICE
50	X-FACE	5.4	O	50	BROKEN LIGHT
51	C2	5.3	C	51	RF(5), LEG BOLTS
Sutro Tower				Signature: _____	Page: <u>3</u> of <u>4</u>
San Francisco, CA				File: _____	Date: 1-11-17



¹ Item designation: L=leg member, D=diagonal, H=horizontal, C=connection, O=others

Inspection Data Sheet: Leg C (Level 5 to Level 6)

Observ. No.	Location/Identification			Photo No.	Observation Comments
	Column	Elevation	Item ¹		
52	Z-FACE	5.3	C	52	ONE GRATING BOLT IS LOOSE
53	Y-FACE	5.3	C	53	ONE BOLT IS MISSING FOR OUTSIDE BEAM CONNECTION
54	Y-FACE	5.3	C	54	DIAGONAL GUSSET IS RUSTED
55	C3	5.3 - 5.13	C	55	RF(15), LEG REINFORCEMENT BOLTS
56	C1	5.2	L	56	LEG IS RUSTED
57	X-FACE	5.1	C	57	HORIZONTAL GUSSET IS RUSTED
Sutro Tower					Signature: _____
San Francisco, CA					Page: <u> 4 </u> of <u> 4 </u>
					Date: 1-11-17



¹ Item designation: L=leg member, D=diagonal, H=horizontal, C=connection, O=others



Photo 1.JPG
7/11/2016

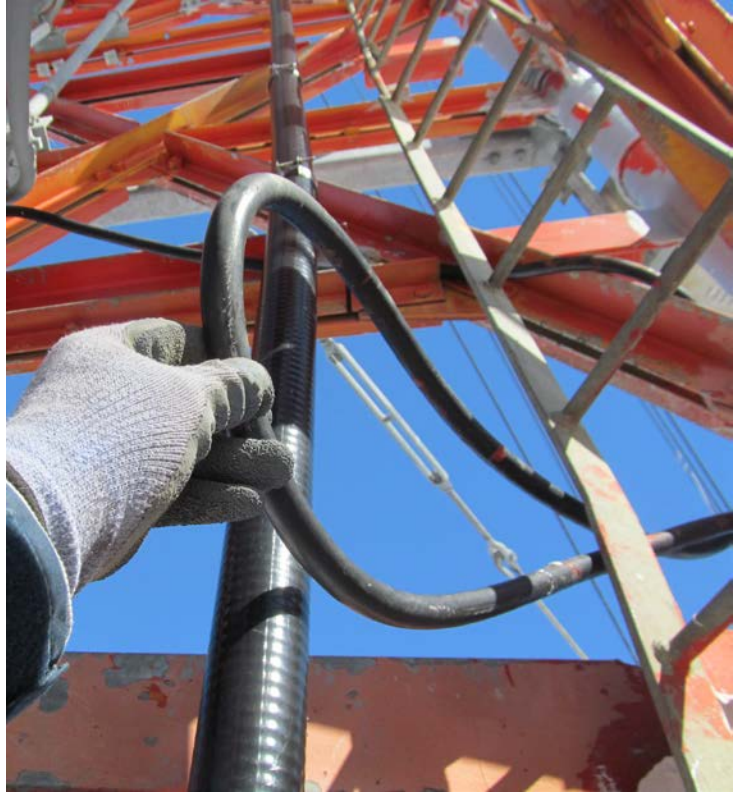


Photo 2.JPG
7/11/2016



Photo 3.JPG
7/11/2016



Photo 4.JPG
8/8/2016



Photo 5.JPG
8/8/2016



Photo 6.JPG
8/8/2016



Photo 7.JPG
8/8/2016

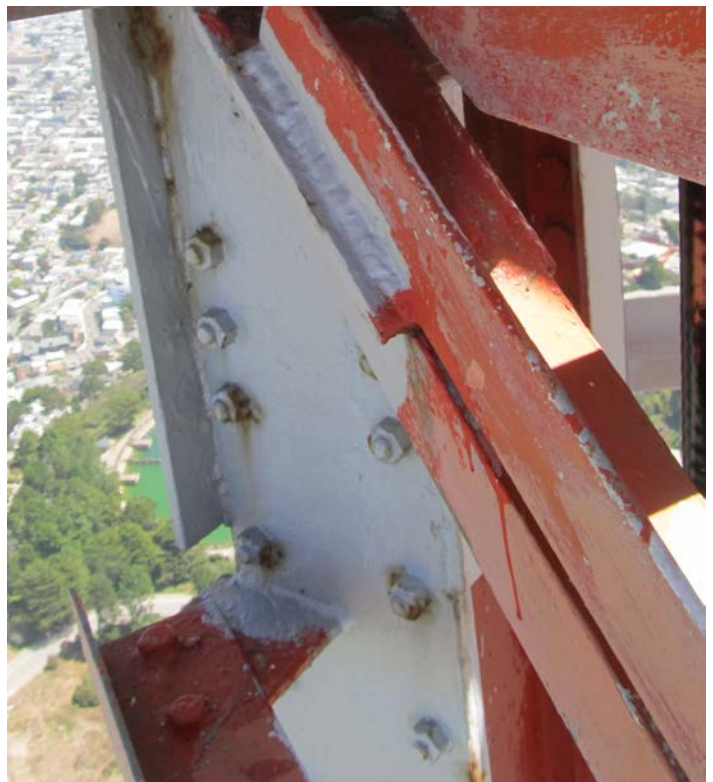


Photo 8.JPG
8/8/2016



Photo 9.JPG
8/8/2016



Photo 10.JPG
8/8/2016



Photo 11.JPG
8/8/2016



Photo 12.JPG
8/8/2016



Photo 13.JPG
8/8/2016



Photo 14.JPG
8/8/2016



Photo 15.JPG
8/8/2016



Photo 16.JPG
8/8/2016



Photo 17.JPG
8/8/2016

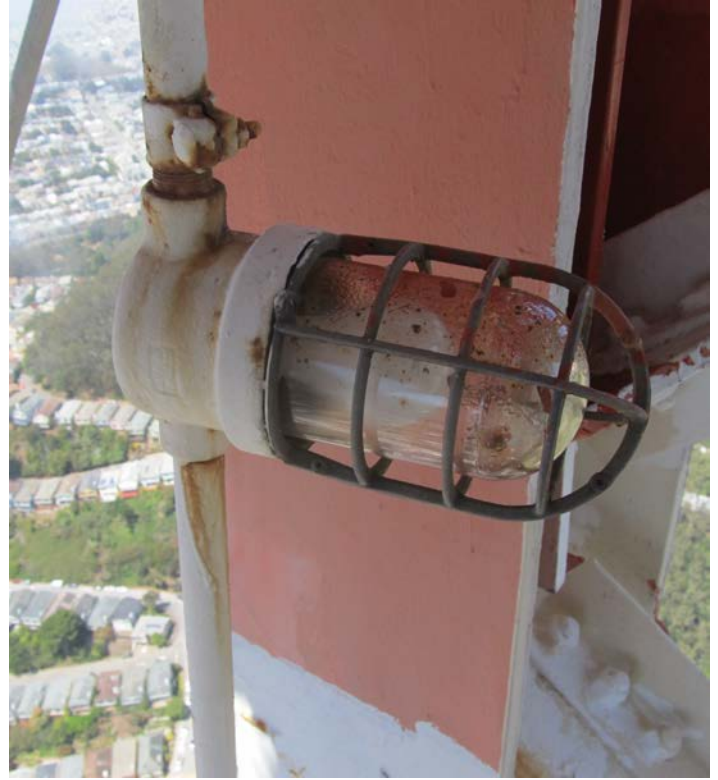


Photo 18.JPG
8/8/2016



Photo 19.JPG
8/8/2016



Photo 20.JPG
8/8/2016



Photo 21.JPG
8/8/2016

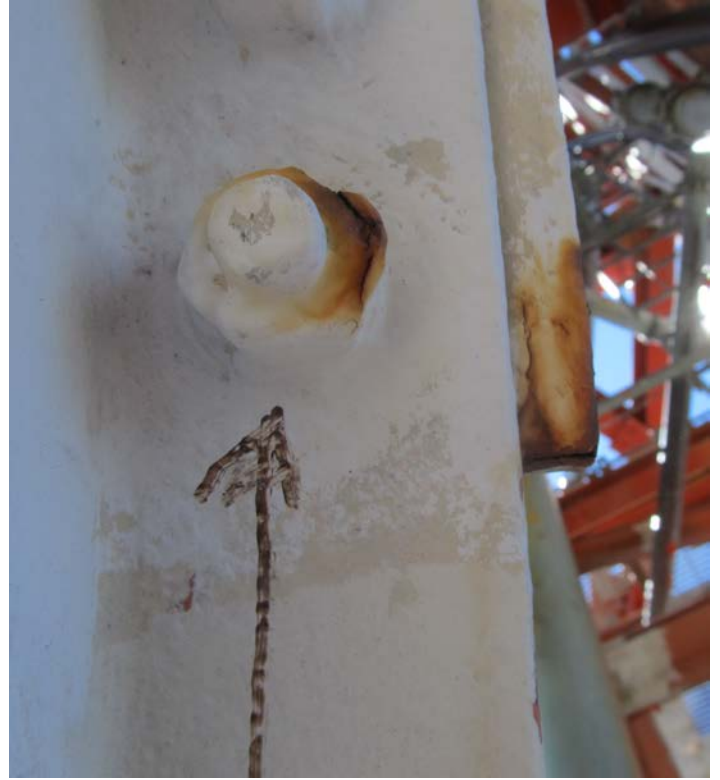


Photo 22.JPG
8/8/2016



Photo 23.JPG
8/8/2016



Photo 24.JPG
8/8/2016



Photo 25.JPG
8/8/2016



Photo 26.JPG
8/8/2016



Photo 27.JPG
8/8/2016



Photo 28.JPG
8/8/2016



Photo 29.JPG
8/8/2016



Photo 30.JPG
8/8/2016



Photo 31.JPG
8/8/2016



Photo 32.JPG
8/8/2016



Photo 33.JPG
8/8/2016



Photo 34.JPG
8/8/2016



Photo 35.JPG
8/8/2016



Photo 36.JPG
8/8/2016



Photo 37.JPG
8/8/2016



Photo 38.JPG
8/8/2016



Photo 39.JPG
8/8/2016



Photo 40.JPG
8/8/2016



Photo 41.JPG
8/8/2016



Photo 42.JPG
8/8/2016



Photo 43.JPG
8/8/2016



Photo 44.JPG
8/8/2016



Photo 45.JPG
8/8/2016



Photo 46.JPG
8/8/2016



Photo 47.JPG
8/8/2016



Photo 48.JPG
8/8/2016



Photo 49.JPG
8/8/2016



Photo 50.JPG
8/8/2016

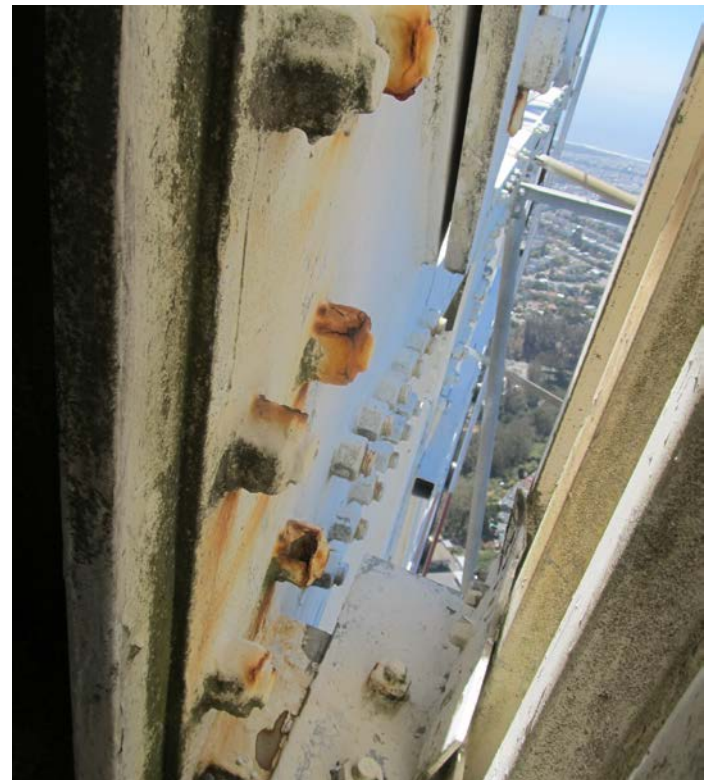


Photo 51.JPG
8/8/2016



Photo 52.JPG
8/8/2016



Photo 53.JPG
8/8/2016



Photo 54.JPG
8/8/2016



Photo 55.JPG
8/8/2016



Photo 56.JPG
8/8/2016

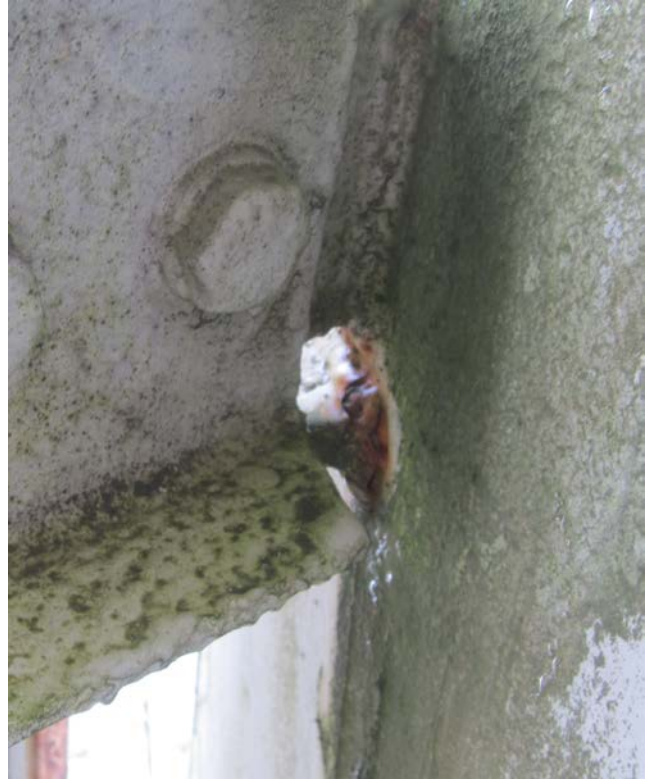
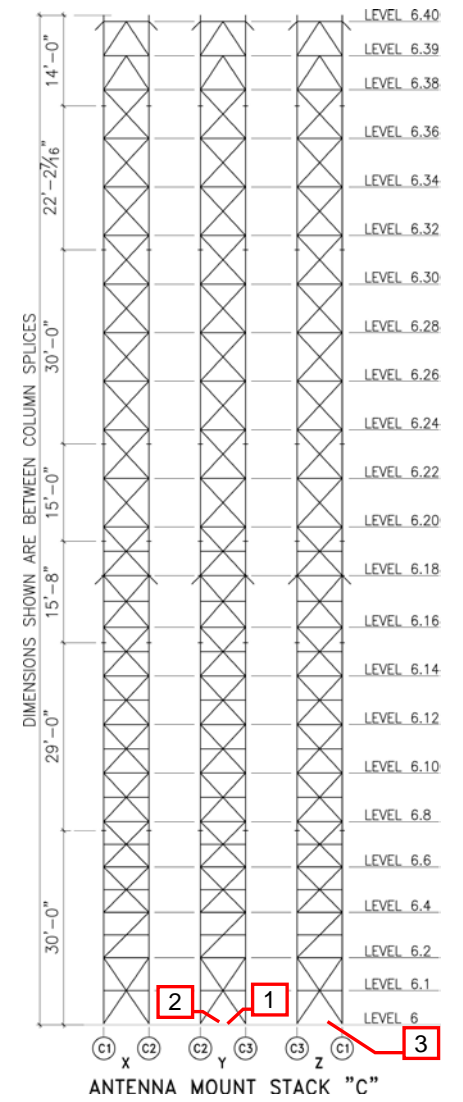


Photo 57.JPG
8/10/2016

Inspection Data Sheet: Antenna Mount Stack "C" (Level 6 to base of antenna)

Observ. No.	Location/Identification			Photo No.	Observation Comments
	Column	Elevation	Item ¹		
1	Y-FACE	6	O	1	JUNCTION BOX IS MISSING SCREWS
2	Y-FACE	6	O	2	DAMAGED JACKET FOR FLEX LINE
3	Z-FACE	6	O	3	LOOSE FEED LINE
<i>Sutro Tower</i>				Signature: _____	Page: <u> 1 </u> of <u> 1 </u>
<i>San Francisco, CA</i>				File: _____	Date: 1-11-17



¹ Item designation: L=leg member, D=diagonal, H=horizontal, C=connection, O=others



Photo 01.JPG
7/12/2016



Photo 02.JPG
7/12/2016



Photo 03.JPG
7/12/2016

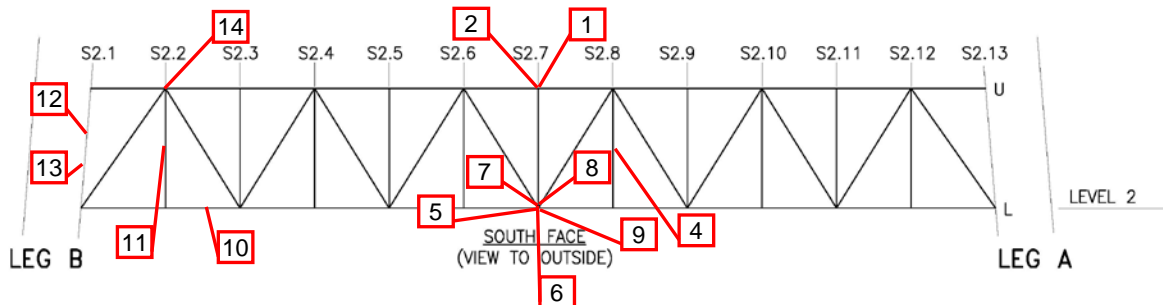
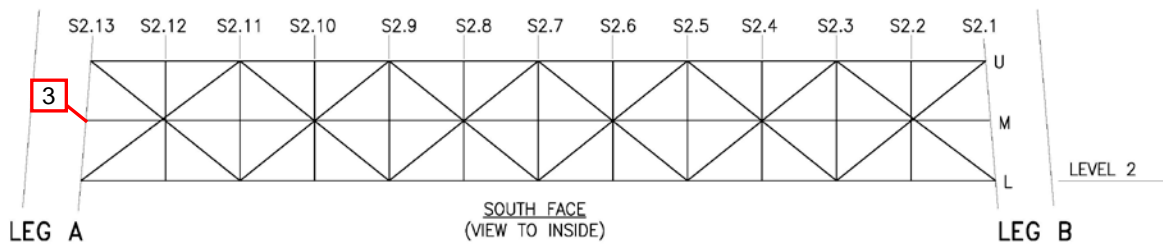
Antenna Mount Stack "C" (Level 6 to base of antenna)

Inspection Data Sheet: South Truss (Level 2)

Observ. No.	Location/Identification			Photo No.	Observation Comments
	Chord ¹	Horiz. Location	Item ²		
1	U	2.7	C	1	IMPROPER HOLES FOR CHANNEL
2	U	2.7	C	2	RUST ON TOP SKIN SUPPORT CHANNEL BOLTS
3	M	2.13	C	3	RF(3)
4	M	2.8	C	4	MINOR RUST ON GUSSET
5	L	2.7	O	5	RF(1), ANTENNA MOUNT BOLT
6	L	2.7	O	6	RF(4), ANTENNA MOUNT BOLTS
7	L	2.7	O	7	LOOSE BOLT FOR ANTENNA MOUNT
8	L	2.7	O	8	RF(4), ANTENNA MOUNT BOLTS
9	L	2.7	O	9	RF(1), ANTENNA MOUNT BOLT
10	L	2.25	O	10	ANTENNA MOUNT BOLTS SHOW MINOR RUST
11	M	2.2	H	11	MINOR RUST ON SKIN CHANNEL
12	M	2.1	C	12	BEAM CONNECTION BOLT IS MISSING
13	M	2.1	C	13	RF(1)
14	U	2.2	C	14	RF(2)
<i>Sutro Tower</i>				Signature: _____	Page: <u> 1 </u> of <u> 1 </u>
<i>San Francisco, CA</i>				File: _____	Date: 1-11-17

¹ Chord member designation: U = upper, M = middle, and L = lower

² Item designation: L=leg member, D=diagonal, H=horizontal, C=connection, O=others



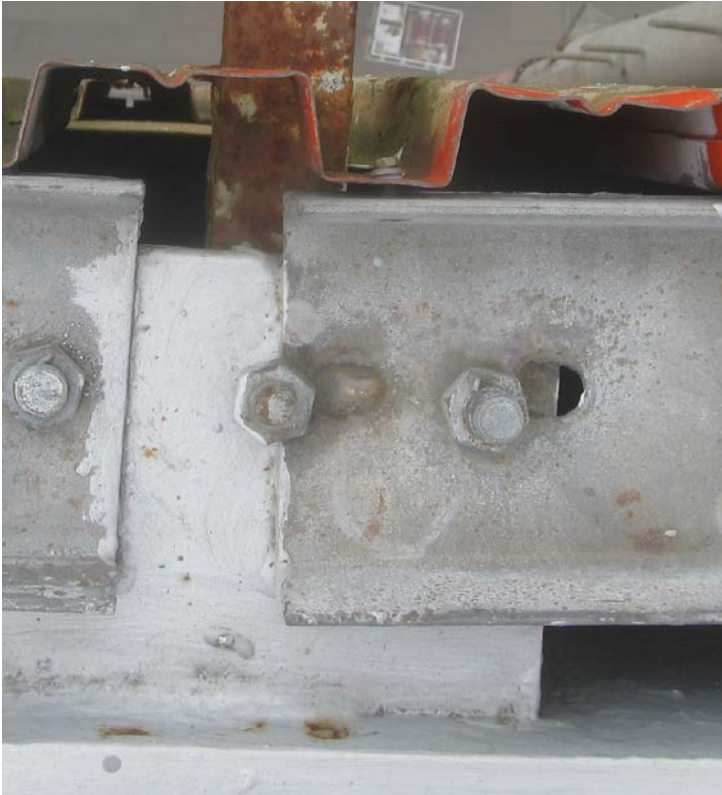


Photo 01.JPG
8/11/2016



Photo 02.JPG
8/11/2016



Photo 03.JPG
8/12/2016



Photo 04.JPG
8/12/2016



Photo 05.JPG
8/12/2016



Photo 06.JPG
8/12/2016



Photo 07.JPG
8/12/2016



Photo 08.JPG
8/12/2016



Photo 09.JPG
8/12/2016

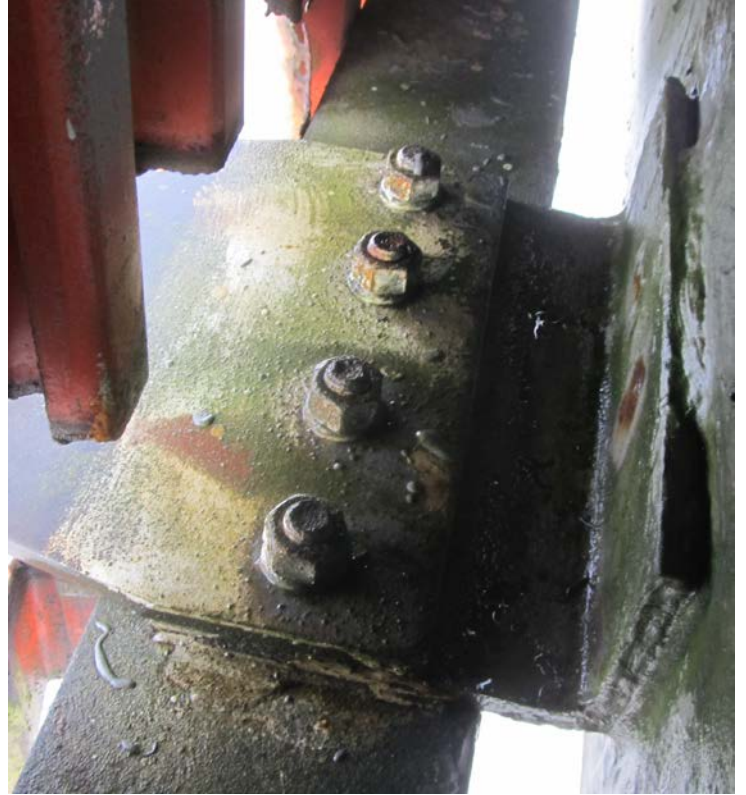


Photo 10.JPG
8/12/2016



Photo 11.JPG
8/12/2016

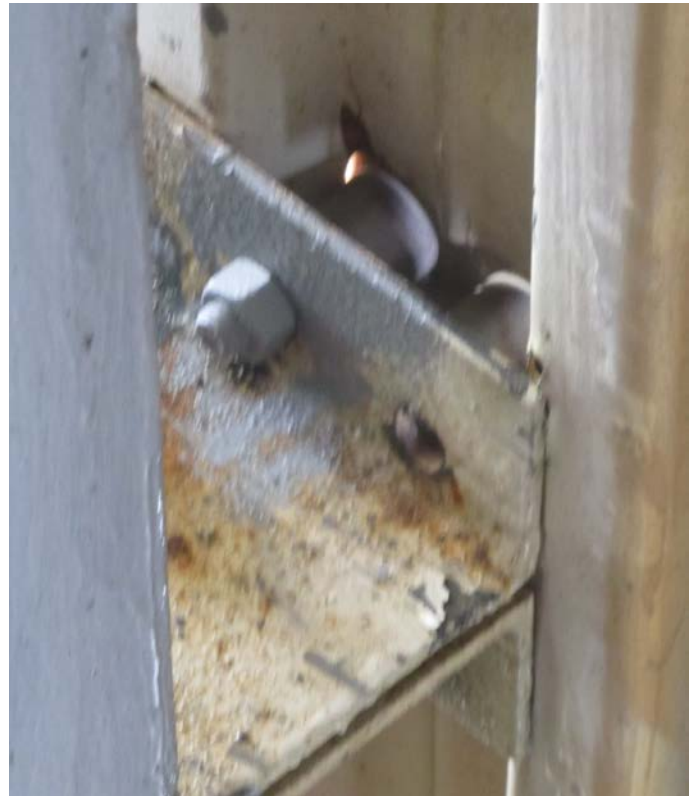


Photo 12.JPG
8/12/2016



Photo 13.JPG
8/12/2016



Photo 14.JPG
8/12/2016

Inspection Data Sheet: South Truss (Level 3)

Observ. No.	Location/Identification			Photo No.	Observation Comments
	Chord ¹	Horiz. Location	Item ²		
1	M	3.1	O	1	CATWALK HANDRAIL IS MISSING A BOLT
2	L	3.1	C	2	RF(1)
3	L	3.9	C	3	NEW BOLTS ARE NOT PAINTED
4	L	3.9	C	4	RF(5)
5	L	3.8	H	5	SKIN SUPPORT CHANNEL IS CUT
6	L	3.5	L	6	RUST ON VERTICAL
7	L	3.5	D	7	RUST ON DIAGONAL
8	L	3.3	H	8	SKIN SUPPORT CHANNEL IS CUT
9	L	3.1	C	9	RF(9)
10	L	3.1	C	10	RF(3)
11	U	3.1	C	11	RF(4)
12	U	3.1	H	12	MINOR RUST ON BEAM
13	U	3.1	O	13	RUSTED CLIPS ON SAFETY CABLE
<i>Sutro Tower</i>				Signature:	Page: <u> 1 </u> of <u> 1 </u>
<i>San Francisco, CA</i>				File:	Date: 1-11-17

¹ Chord member designation: U = upper, M = middle, and L = lower

² Item designation: L=leg member, D=diagonal, H=horizontal, C=connection, O=others

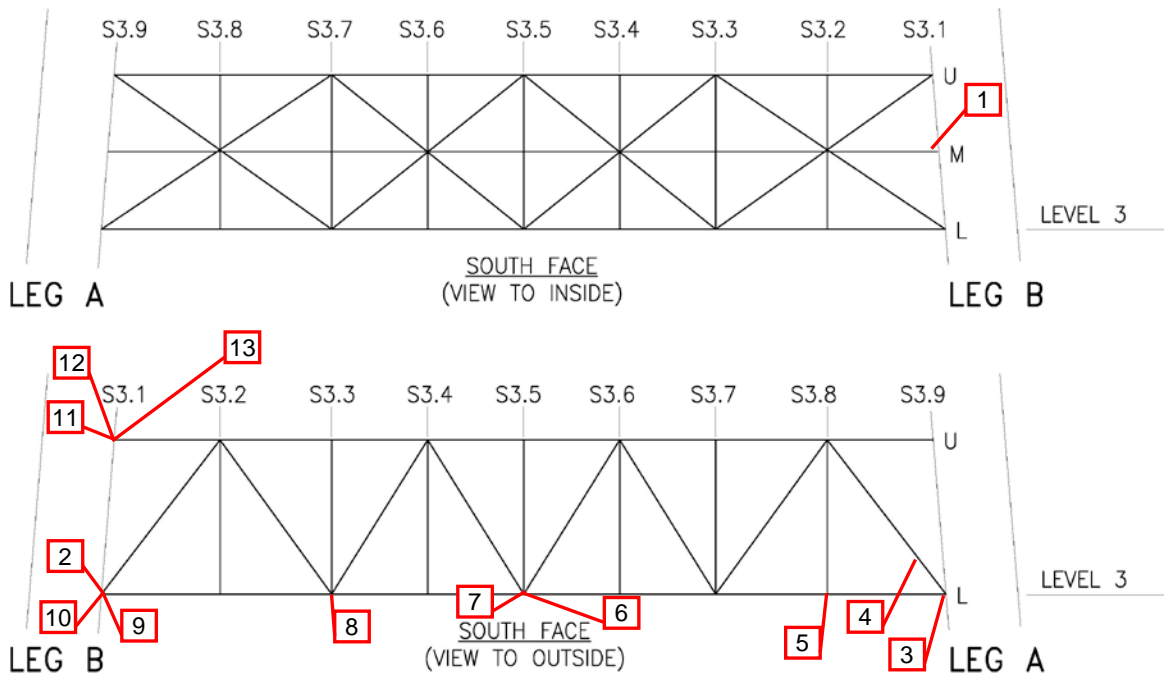




Photo 01.JPG
8/11/2016



Photo 02.JPG
8/11/2016



Photo 03.JPG
8/11/2016



Photo 04.JPG
8/11/2016



Photo 05.JPG
8/11/2016



Photo 06.JPG
8/11/2016



Photo 07.JPG
8/11/2016



Photo 08.JPG
8/11/2016



Photo 09.JPG
8/11/2016

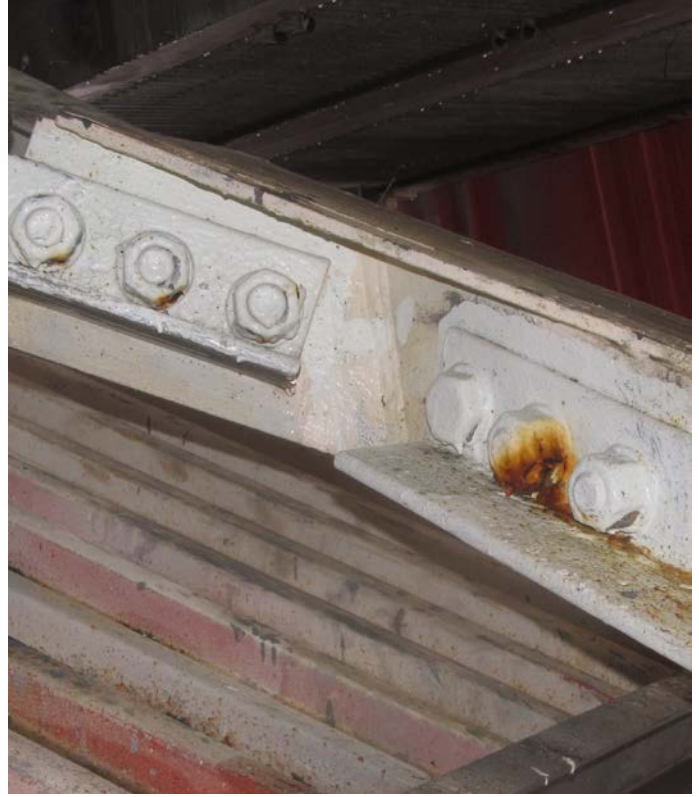


Photo 10.JPG
8/11/2016



Photo 11.JPG
8/11/2016



Photo 12.JPG
8/11/2016

South Truss (Level 3)



Photo 13.JPG
8/11/2016



Photo 01.JPG
8/10/2016



Photo 02.JPG
8/10/2016



Photo 03.JPG
8/10/2016

South Truss (Level 4)

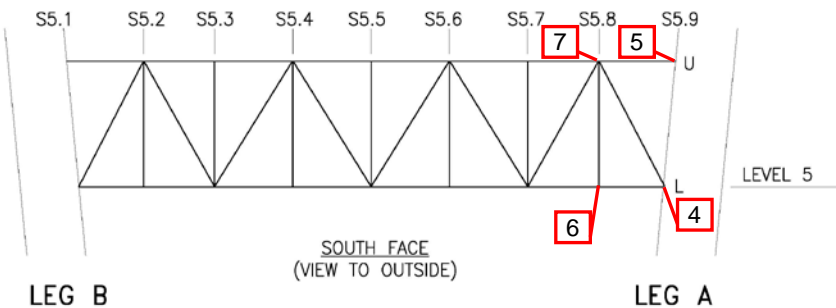
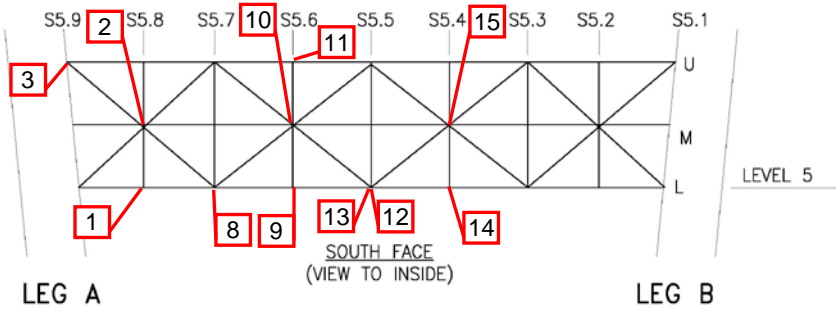
Inspection Data Sheet: South Truss (Level 5)

Observ. No.	Location/Identification			Photo No.	Observation Comments
	Chord ¹	Horiz. Location	Item ²		
1	L	5.8	C	1	RF(5)
2	M	5.8	C	2	RF(1)
3	U	5.9	C	3	RF(2)
4	L	5.9	C	4	RF(4)
5	U	5.9	C	5	RF(7)
6	L	5.8	C	6	RF(4)
7	U	5.8	C	7	RF(8)
8	L	5.7	C	8	RF(5)
9	L	5.6	C	9	RF(4)
10	M	5.6	C	10	RF(1)
11	U	5.6	C	11	RF(2)
12	L	5.5	C	12	RF(2)
13	L	5.5	C	13	SHORT BOLTS
14	L	5.4	C	14	RF(2)
15	M	5.4	C	15	RF(2)

Sutro Tower	Signature: _____	Page: <u> 1 </u> of <u> 3 </u>
San Francisco, CA	File: _____	Date: 1-11-17

¹ Chord member designation: U = upper, M = middle, and L = lower

² Item designation: L=leg member, D=diagonal, H=horizontal, C=connection, O=others



Inspection Data Sheet: South Truss (Level 5)

Observ. No.	Location/Identification			Photo No.	Observation Comments
	Chord ¹	Horiz. Location	Item ²		
16	M	5.4	C	16	RF(2)
17	U	5.4	C	17	RF(1)
18	L	5.3	C	18	RF(2)
19	U	5.3	C	19	RF(4)
20	L	5.2	C	20	RF(4)
21	M	5.2	C	21	RF(1)
22	L	5.1	C	22	RF(1)
23	U	5.1	C	23	RF(2)
24	M	5.6	O	24	RUSTED HARDWARE FOR HANDRAIL CABLE
25	M	5.6	O	25	RUSTED HANDRAIL CABLES
26	M	5.8	O	26	HANDRAIL CABLE IS MISSING U-BOLT
27	L	5.7	C	27	RF(7)
28	U	5.7	C	28	RF(4)
29	L	5.6	C	29	RF(4)
30	U	5.6	C	30	RF(7)

Sutro Tower	Signature: _____	Page: <u> 2 </u> of <u> 3 </u>
San Francisco, CA	File: _____	Date: 1-11-17

¹ Chord member designation: U = upper, M = middle, and L = lower

² Item designation: L=leg member, D=diagonal, H=horizontal, C=connection, O=others

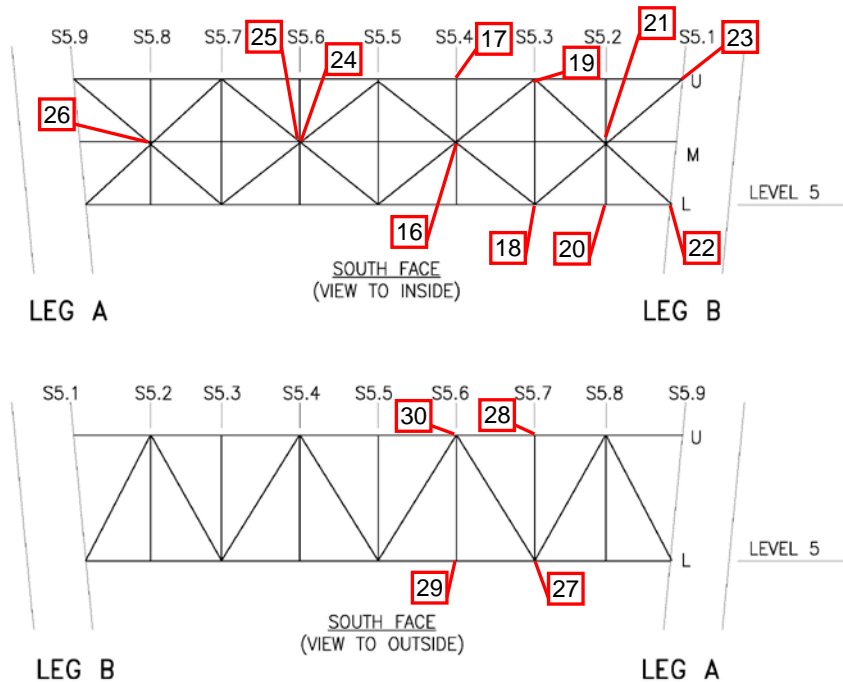




Photo 1.JPG
8/10/2016

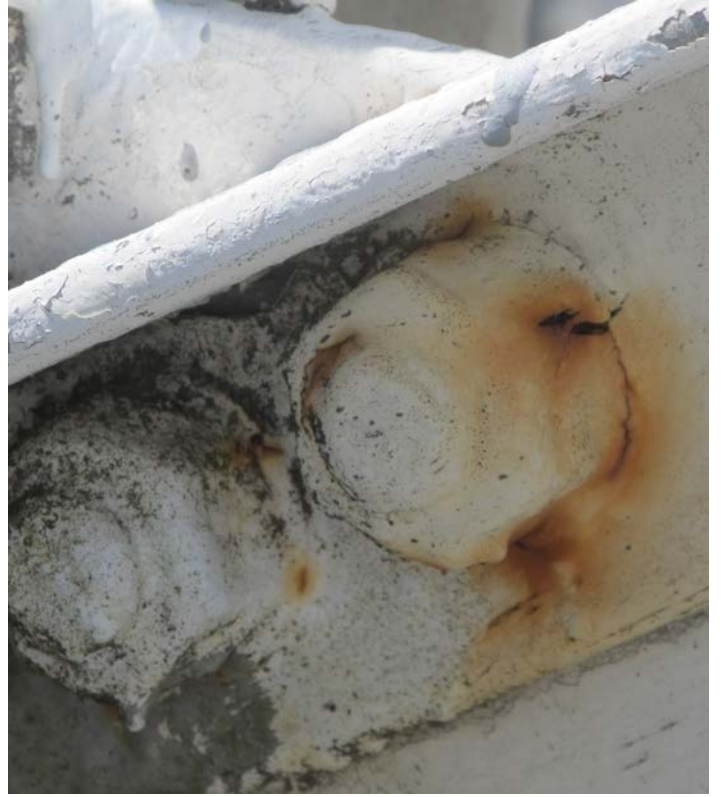


Photo 2.JPG
8/10/2016



Photo 3.JPG
8/10/2016



Photo 4.JPG
8/10/2016



Photo 5.JPG
8/10/2016

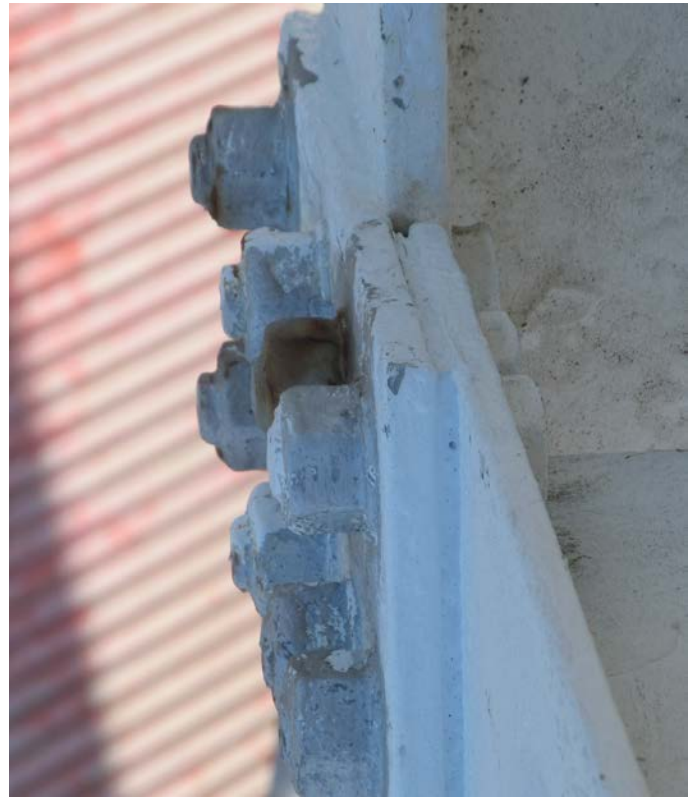


Photo 6.JPG
8/10/2016



Photo 7.JPG
8/10/2016



Photo 8.JPG
8/10/2016



Photo 9.JPG
8/10/2016

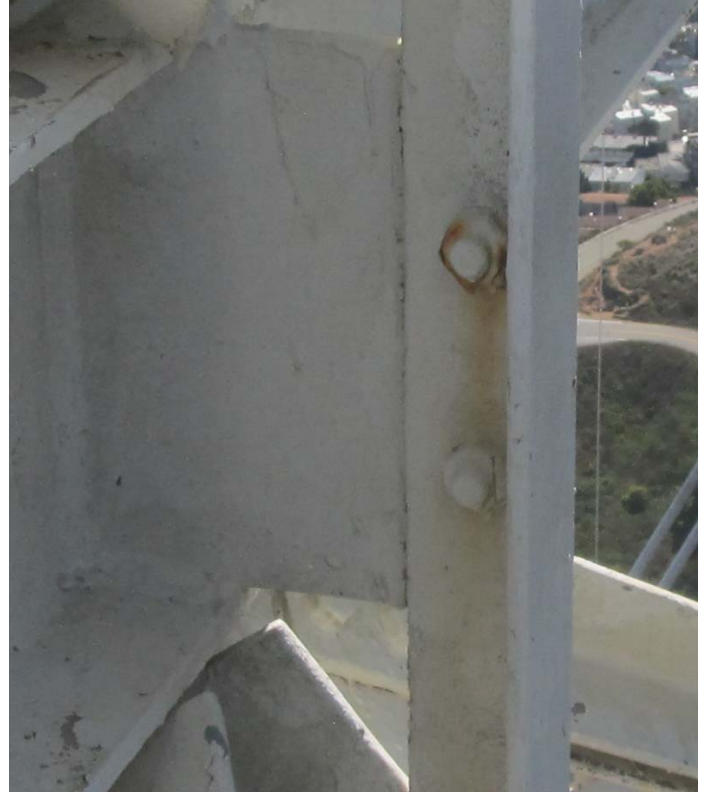


Photo 10.JPG
8/10/2016



Photo 11.JPG
8/10/2016



Photo 12.JPG
8/10/2016

South Truss (Level 5)



Photo 13.JPG
8/10/2016



Photo 14.JPG
8/10/2016



Photo 15.JPG
8/10/2016



Photo 16.JPG
8/10/2016

South Truss (Level 5)



Photo 17.JPG
8/10/2016



Photo 18.JPG
8/10/2016



Photo 19.JPG
8/10/2016



Photo 20.JPG
8/10/2016

South Truss (Level 5)



Photo 21.JPG
8/10/2016



Photo 22.JPG
8/10/2016



Photo 23.JPG
8/10/2016



Photo 24.JPG
8/10/2016



Photo 25.JPG
8/10/2016



Photo 26.JPG
8/10/2016



Photo 27.JPG
8/10/2016



Photo 28.JPG
8/10/2016



Photo 29.JPG
8/10/2016



Photo 30.JPG
8/10/2016



Photo 31.JPG
8/10/2016



Photo 32.JPG
8/10/2016

South Truss (Level 5)



Photo 33.JPG
8/10/2016



Photo 34.JPG
8/10/2016



Photo 35.JPG
8/10/2016



Photo 36.JPG
8/10/2016



Photo 37.JPG
8/10/2016



Photo 38.JPG
8/10/2016



Photo 39.JPG
8/10/2016



Photo 40.JPG
8/10/2016

South Truss (Level 5)



Photo 41.JPG
8/10/2016



Photo 42.JPG
8/10/2016



Photo 43.JPG
8/10/2016



Photo 44.JPG
8/10/2016

Inspection Data Sheet: South Truss (Level 6)

Observ. No.	Location/Identification			Photo No.	Observation Comments
	Chord ¹	Horiz. Location	Item ²		
1	IU	6.21	C	1	RUSTED REINFORCEMENT BOLTS (TYPICAL)
2	IL	6.23	C	2	RF(3)
3	OL	6.26	C	3	RF(3)
4	OU	6.16	C	4	RF(3)
5	IU	6.21	C	5	RF(2)
6	IL	6.155	O	6	RIGID LINE IS NOT SUPPORTED PROPERLY
7	IL	6.9	C	7	RF(1) AND DIAGONAL IS CUT
8	IU	6.14	C	8	RF(6)
9	IU	6.15	O	9	RUSTED SAFETY CABLE AND HARDWARE
10	IU	6.1	O	10	FLEX LINE JACKET IS DAMAGED FOR FM ANTENNA
11	IL	6.2	O	11	DAMAGED HANDRAIL
Sutro Tower				Signature: _____	Page: <u> 1 </u> of <u> 1 </u>
San Francisco, CA				File: _____	Date: 1-11-17

¹ Chord member designation: OU = outer upper, OL = outer lower, IU = inner upper, and IL = inner lower

² Item designation: L=leg member, D=diagonal, H=horizontal, C=connection, O=others

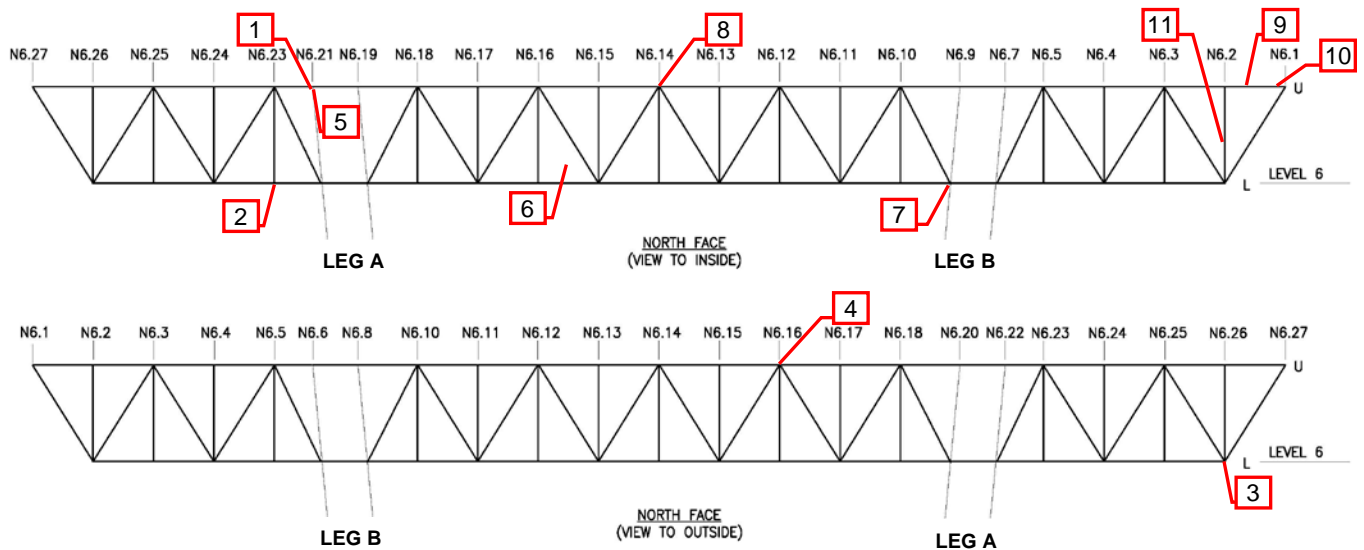




Photo 01.JPG
7/12/2016

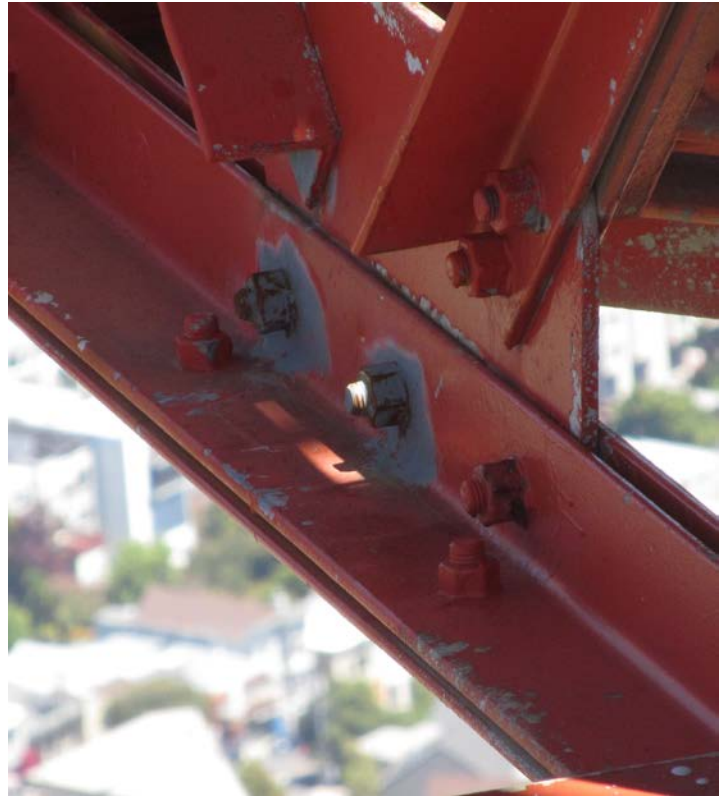


Photo 02.JPG
7/12/2016

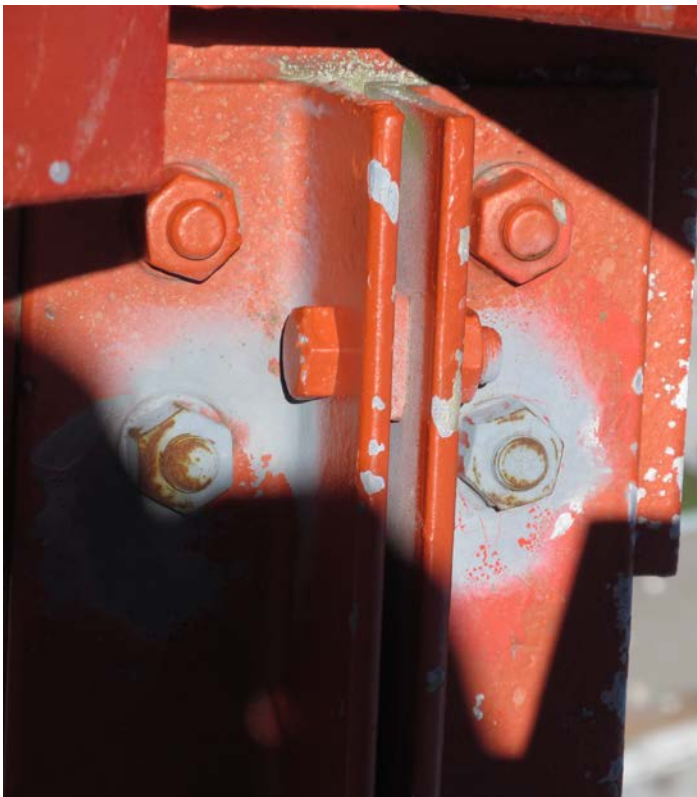


Photo 03.JPG
7/12/2016



Photo 04.JPG
7/12/2016

South Truss (Level 6)



Photo 05.JPG
7/12/2016

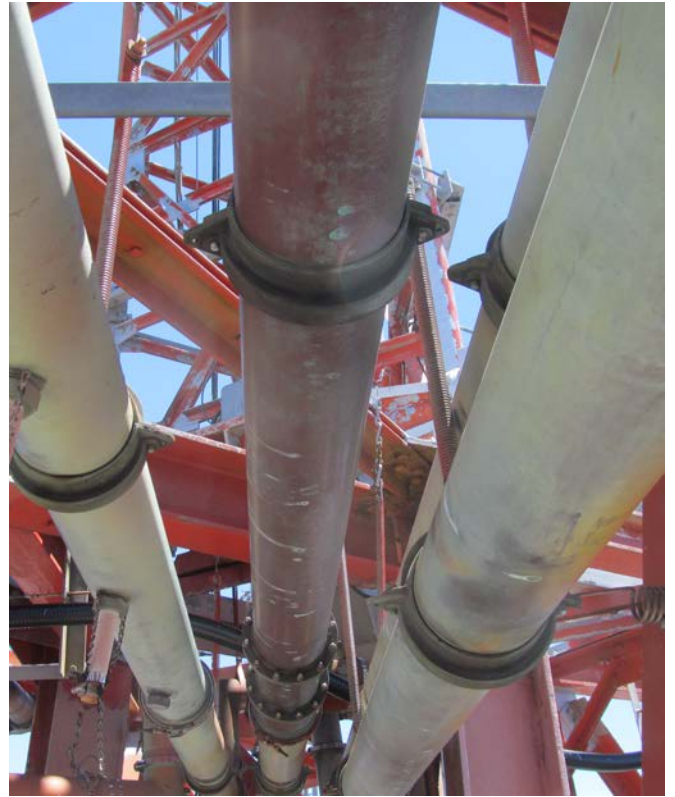


Photo 06.JPG
7/12/2016



Photo 07.JPG
7/12/2016



Photo 08.JPG
7/12/2016

South Truss (Level 6)



Photo 09.JPG
7/12/2016

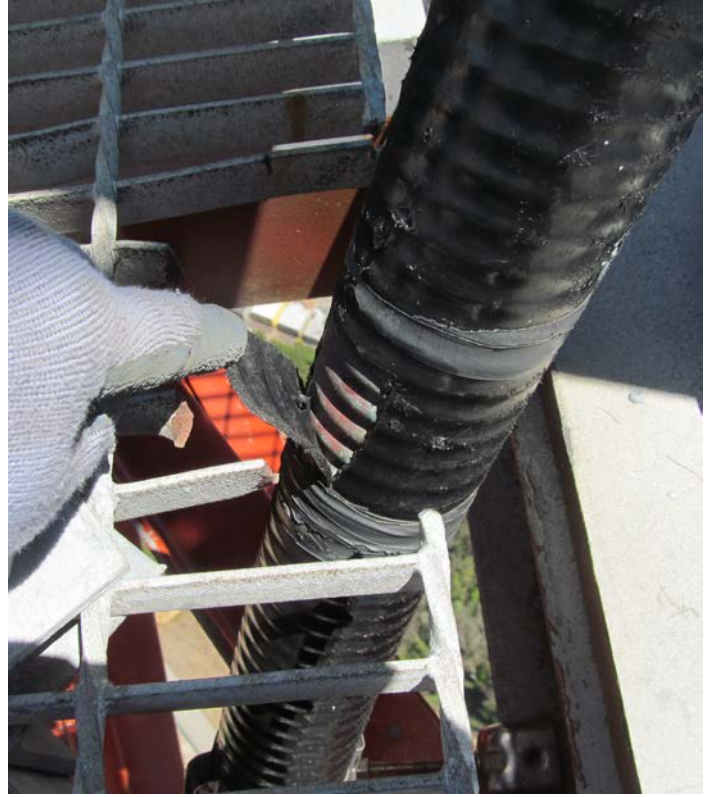


Photo 10.JPG
7/12/2016

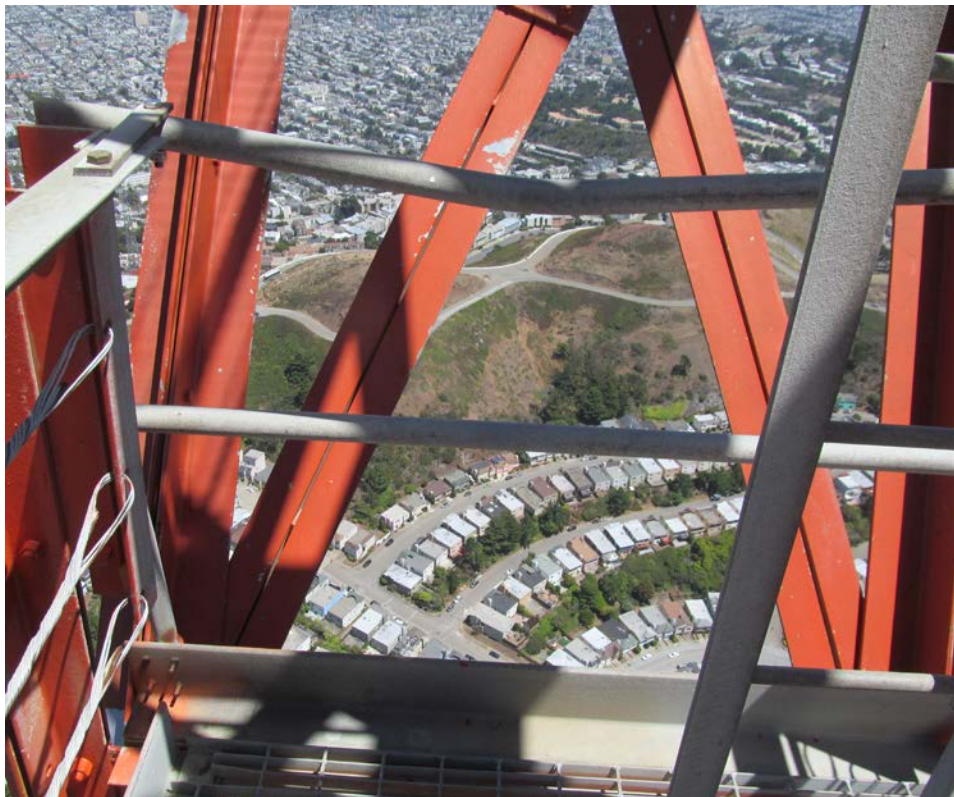


Photo 11.JPG
7/12/2016

South Truss (Level 6)



Photo 01.JPG
8/8/2016

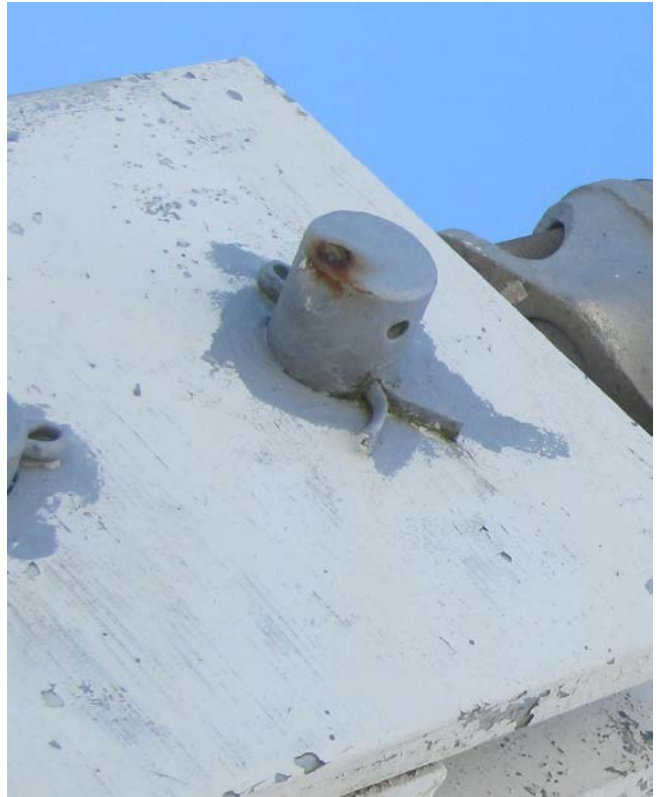


Photo 02.JPG
8/15/2016



Photo 03.JPG
8/12/2016

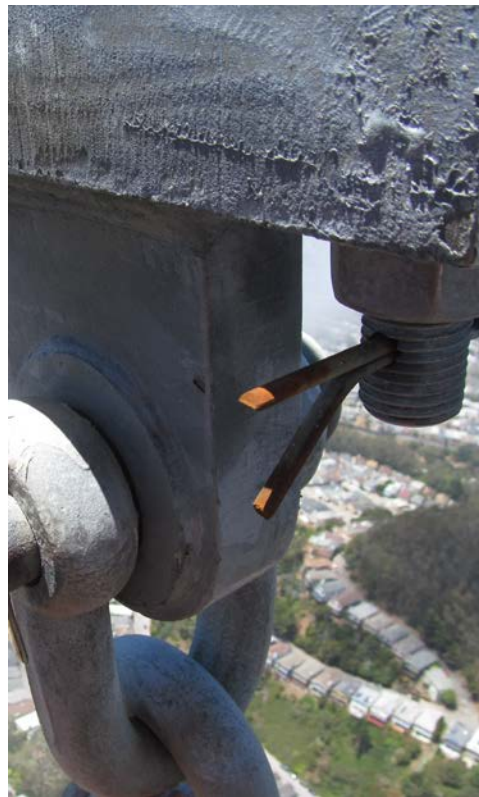


Photo 04.JPG
8/12/2016

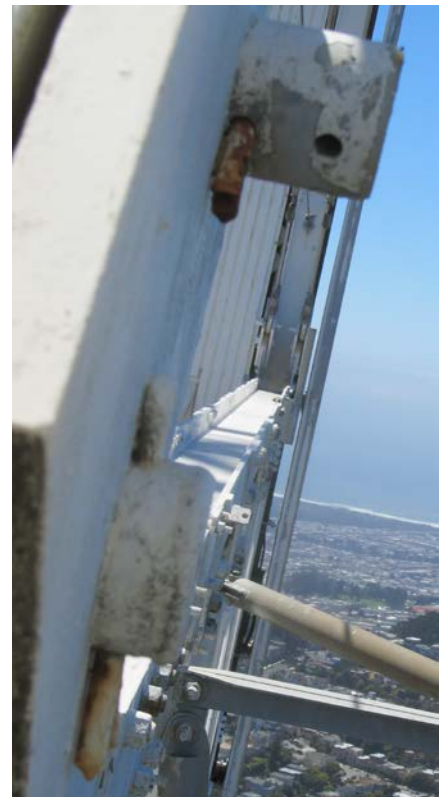


Photo 05.JPG
8/8/2016

Strands, Misc.



Photo 1.JPG
8/12/2016



Photo 2.JPG
8/12/2016



Photo 3.JPG
8/12/2016



Photo 4.JPG
8/12/2016



Photo 5.JPG
8/12/2016



Photo 6.JPG
8/12/2016



Photo 7.JPG
8/12/2016



Photo 8.JPG
8/12/2016



Photo 9.JPG
8/12/2016



Photo 10.JPG
8/12/2016



Photo 11.JPG
8/12/2016



Photo 12.JPG
8/12/2016

Bases, Misc



Photo 13.JPG
8/12/2016



Photo 14.JPG
8/12/2016



Photo 15.JPG
8/12/2016



Photo 16.JPG
8/12/2016

Bases, Misc



Photo 17.JPG
8/10/2016



Photo 18.JPG
8/10/2016



Photo 19.JPG
8/10/2016